

SUMMARY OF FOOTBALL GAME STATISTICS – Home Team

Home Team FLORIDA STATE First Downs: (Rush) 1 (Pass) 7 (Pen.) 0 Total 8 Penalties Against: (No.) 3 (Yards) 35 Own Fumbles: (No.) 2 (Lost) 1

(Don't Use) NCAB CODE	PLAYER	RUSHING				FORWARD PASSING					TOTAL OFFENSE		RECEIVING			INT. RETURNS		PUNTING			PUNT RETURNS		K.O. RETURNS		SCORING								
		Times Carried	Yards Gain	Yards Loss	Net Gain	No. Att.	No. Comp.	Had Int.	Net Gain	Scoring TD's	Conv.	Total Plays	Net Gain	No. Caught	Yards Gain	TD's	No. Inter.	Yards Return	Times Kicked	Yards Kicked	Blkd.	Number Returns	Yards Return	Number Returns	Yards Return	Touch-downs	X Pts. Att.	Kick Made	Other X Pts. Att.	Made	Field Goals Att.	Made	Points
	FRITCHETT	A 3	12	-	12	B 28	10	1	160	1		C 31 172	D 2			E		F			G		H		S								-
	GIARDINO	A 10	35	5	30	B 1	0	1	0			C 11 30	D 2	25		E		F			G		H 1	4	S								
	MANKINS	A 7	25	1	24	B						C 7 24	D 1	10		E		F			G		H		S								
	SPOONER	A 15	33	10	23	B						C 15 23	D			E		F			G		H		S								
	WETHERELL	A				B						C	D 2	68	1	E		F			G		H		S 1							6	
	J. JONES	A				B						C	D 3	33		E		F			G		H		S								
	REVELL	A				B						C	D 2	24		E		F			G		H		S								
	HOSACK	A				B						C	D			E		F 11	449		G		H		S								
	MOREMEN	A				B						C	D			E		F			G		H 1	30	S								
	BIBENT	A				B						C	D			E 1	-	F			G 3	9	H		S								
	CAMPBELL	A				B						C	D			E 1	12	F			G 2	29	H		S								
	ROBERTS	A				B						C	D			E		F			G		H		S	1	0			1	1	3	
		A				B						C	D			E		F			G		H		S								
		A				B						C	D			E		F			G		H		S								
		A				B						C	D			E		F			G		H		S								
		A				B						C	D			E		F			G		H		S								
		A				B						C	D			E		F			G		H		S								
		A				B						C	D			E		F			G		H		S								
		A				B						C	D			E		F			G		H		S								
		A				B						C	D			E		F			G		H		S								
		A				B						C	D			E		F			G		H		S								
	TEAM TOTALS	A 35	105	16	89	B 29	10	2	160	1	0	C 64 249	D 10	160	1	E 2	12	F 11	449	0	G 5	38	H 2	34	S 1	1	0	0	0	1	1	9	

Opponents BAYLOR First Downs: (Rush) 7 (Pass) 5 (Pen.) 3 Total 15 Penalties Against: (No.) 8 (Yards) 106 Own Fumbles: (No.) 3 (Lost) 2

Enter Here Team Totals From Visiting Team Summary	RUSHING				FORWARD PASSING					TOTAL OFFENSE		RECEIVING			INT. RETURNS		PUNTING			PUNT RETURNS		K.O. RETURNS		SCORING								
	Times Carried	Yards Gain	Yards Loss	Net Gain	No. Att.	No. Comp.	Had Int.	Net Gain	Scoring		Total Plays	Net Gain	No. Caught	Yards Gain	TD's	No. Inter.	Yards Return	Times Kicked	Yards Kicked	Blkd.	Number Returns	Yards Return	Number Returns	Yards Return	Touch- downs	X Pts. Kick		Other X Pts.		Field Goals		Points
									TD's	Conv.																Att.	Made	Att.	Made	Att.	Made	
VISITING TEAM TOTALS	A 44	182	36	146	B 33	12	2	151	1	0	C 77	297	D 12	151	1	E 2	1	F 2	42	8	G 6	40	H 3	42	S 1	1	1	0	0	0	1	

Date of Game Oct. 2, 1965 Where Played Tallahassee, Fla. Authenticated by William Krapp and _____
 NCAB Form No. 347-A (Copyright, 1964, The National Collegiate Athletic Bureau, Box 757, Grand Central Station, New York, N. Y.) (For Home Team) (For Opponents) (OVER)

	Score by Quarters:	1st	2nd	3rd	4th	Total
Official Attendance <u>28,900</u>	<u>F S U</u>	3	0	0	6	9
Weather Conditions <u>Fair, Cloudy</u>	<u>BAYLOR</u>	7	0	0	0	7

List **all** scoring plays; also non-scoring plays (including punts) gaining 50 yards or more, and all **missed field goal attempts**.

Under "type of play" indicate rush, pass, int. runback, punt runback, kickoff runback, punt or field goal. List tries-for-points as P.A.T. kick, P.A.T. rush or P.A.T. pass.

On pass play, give passer first, then receiver, and combined yardage of pass and run. Measure runbacks from goal line, if started in end zone. Measure field goal attempts from point of kick. All other plays are measured from line of scrimmage.

[illegible]

(Originated by the N.C.A.A. Football Rules Committee's Sub-committee on Football Statistics)

A first down shall be recorded whenever the yardsticks are ordered forward by the officials, and when a touchdown is scored from scrimmage (by rushing or passing) within a series of downs starting 10 yards or more from the goal line. A first down is ~~not~~ recorded on a touchdown runback, regardless of the distance of the scoring run.

Article 1: All offensive running plays are to be classified as rushing plays, **not** as "plays from scrimmage," since any play begun with a snapback from center actually is a play from scrimmage.

Article 2: Rushing yardage is measured from the line of scrimmage to the point where the ball is declared dead, or is recovered by opponents in the case of a fumble.

Article 3: The rushing total is a net figure . All rushing losses must be recorded so as to account for the net figure.

Article 4: All gains on lateral passes which originated or grew out of a rushing play are included in rushing yardage. (See Article 1 of Section 4.)

Article 1: Forward passing gains or losses are measured from the scrimmage line to the point where the ball is declared dead (or is recovered by opponents in the case of a fumble), so as to include both length of pass and running advance after completion. All yards gained or lost on each completed pass play are credited to **both** the passer and the receiver.

Article 2: Loss from a completed forward pass which did not advance the ball to the scrimmage line is a yardage charge against passing gain.

Article 3: Any loss by a player apparently intending to pass, but thrown behind the line of scrimmage, is recorded as a **loss by rushing**. He is **not** a passer until he has thrown the ball, and he retains at all times the option of running.

Article 4: Interception returns are measured from the point of interception to the point where the ball is declared dead (or is recovered by opponents in the case of a fumble).

Article 5: There is **no** pass completed by penalty. A gain through interference on a passing play is a penalty against the defending team. The passer is **not** charged with a pass attempt, nor credited with a pass completed or yards gained; nor is the intended receiver (or the player interfered with) credited with a pass caught. The passing team

is credited only with a first down by penalty. The defensive (offending) team is charged with a penalty, and the distance from the line of scrimmage to the spot of the penalty under "yards penalized."

Article 6: The forward passer is charged with a forward pass attempt when a forward pass is ruled intentionally grounded.

Article 1: A lateral pass is always a component part of the ultimate play, whether it precedes or follows that play, since the lateral is merely an extension of the original or ultimate play, in effect.

(Approved Ruling — Player A receives a forward pass for a gain of 10 yards, then throws a lateral pass to Player B, who gains an additional 5 yards. Player A is credited with one pass caught and 10 yards under "receiving." Player B is credited with NO pass caught and with 5 yards under "receiving." Player who threw the forward pass is credited with 15 yards under "forward passing.")

(Approved Ruling — Player A catches punt and returns 10 yards before throwing a lateral pass to Player B, who returns another 5 yards. Player A is credited with one return and 10 yards under "punt returns." Player B is credited with NO return and with 5 yards under "punt returns.")

Article 2: Incomplete lateral passes are scored as fumbles, and yards lost are charged against the player who, in the scorer's opinion, was responsible for the failure of the pass.

Article 3: Intercepted lateral passes are scored as fumbles, the offensive team being charged with a fumble lost.

Article 4: The official scorer rules on whether a completed pass to a flanker or man-in-motion is a forward or a lateral pass. If the latter, the play is recorded under "rushing." If the pass is incomplete, the subsequent action of the officials reveals whether the pass was a forward or a lateral.

Article 1: Total offense is the combined result of rushing and forward passing **only**, since these two are the only methods by which legal advance can be initiated while retaining possession of the ball.

Article 2: Total offense yardage is the total of net gain by rushing and net gain by forward passing. "Receiving" yards gained are not included in total offense.

Any loss resulting from an **obvious** wild pass from center is charged to "center pass," and not to any individual player.

(Continued on back of Form 347-B)

*See the OFFICIAL FOOTBALL STATISTICIANS' MANUAL for complete rulings and interpretations.

SUMMARY OF FOOTBALL GAME STATISTICS — Visiting Team

Visiting Team BAYLOR First Downs: (Rush) 7 (Pass) 5 (Pen.) 3 Total 15 Penalties Against: (No.) 8 (Yards) 106 Own Fumbles: (No.) 3 (Lost) 2

(Don't Use) NCAB CODE	PLAYER	RUSHING				FORWARD PASSING					TOTAL OFFENSE		RECEIVING			INT. RETURNS		PUNTING			PUNT RETURNS		K.O. RETURNS		SCORING									
		Times Carried	Yards Gain	Yards Loss	Net Gain	No. Att.	No. Comp.	Had Int.	Net Gain	Scoring		Total Plays	Net Gain	No. Caught	Yards Gain	TD's	No. Inter.	Yards Return	Times Kicked	Yards Kicked	Blkd.	Number Returns	Yards Return	Number Returns	Yards Return	Touch- downs	X Pts. Kick		Other X Pts.		Field Goals		Points	
										TD's	Conv.																Att.	Made	Att.	Made	Att.	Made		
	DEFFE	A 18	71	11	68	B						C 18	79	D			E		F			G		H		S								
	HAYES	A 10	55	1	54	B						D 10	54	D			E		F			G		H		S								
	W. MARSHALL	A 9	30	1	29	B						C 9	29	D			E		F			G		H 2	28	S								
	R.M. MARSHALL	A 6	18	9	9	B 31	11	2	136	1	0	C 37	145	D			E		F			G		H		S								
	SOUTHALL	A 1	0	14	-14	B 2	1	0	15			C 3	1	D			E		F			G		H		S								
	CHESHIRE	A				B						C		D 4	50	1	E		F			G 5	23	H 1	14	S 1							6	
	PITTARD	A				B						C		D 2	20		E		F			G		H		S								
	BOVENZI	A				B						C		D 2	35		E		F			G		H		S								
	LANE	A				B						C		D 2	19		E		F			G		H		S								
	WALKER	A				B						C		D 1	11		E		F			G		H		S								
	GREEN	A				B						C		D 1	10		E		F			G		H		S								
	HEAD	A				B						C		D			E		F 12	41		G		H		S								
	J. JONES	A				B						C		D			E		F			G		H		S								
	WHIDDON	A				B						C		D			E 1	1	F			G 1	15	H		S								
	ANDERSON	A				B						C		D			E 1	0	F			G		H		S								
	PURVIS	A				B						C		D			E		F			G		H		S	11			+1			1	
		A				B						C		D			E		F			G		H		S								
		A				B						C		D			E		F			G		H		S								
		A				B						C		D			E		F			G		H		S								
		A				B						C		D			E		F			G		H		S								
	TEAM TOTALS	A 44	182	36	146	B 33	12	2	151	1		C 77	297	D 12	151	1	E 2	1	F 12	421		G 6	40	H 3	42	S 1	1	1	0	0	0	7		

Opponents FLORIDA STATE First Downs: (Rush) 1 (Pass) 7 (Pen.) 0 Total 8 Penalties Against: (No.) 3 (Yards) 35 Own Fumbles: (No.) 2 (Lost) 1

Enter Here Team Totals From Home Team Summary	RUSHING				FORWARD PASSING					TOTAL OFFENSE		RECEIVING			INT. RETURNS		PUNTING			PUNT RETURNS		K.O. RETURNS		SCORING								
	Times Carried	Yards Gain	Yards Loss	Net Gain	No. Att.	No. Comp.	Had Int.	Net Gain	Scoring		Total Plays	Net Gain	No. Caught	Yards Gain	TD's	No. Inter.	Yards Return	Times Kicked	Yards Kicked	Blkd.	Number Returns	Yards Return	Number Returns	Yards Return	Touch- downs	X Pts. Kick		Other X Pts.		Field Goals		Points
									TD's	Conv.																Att.	Made	Att.	Made	Att.	Made	
HOME TEAM TOTALS	A 35	105	16	89	B 29	10	2	100	1	0	C 64	249	D 10	100	1	E 2	12	F 11	44	0	G 5	38	H 2	34	S 1	1	0	0	0	1	7	

Date of Game Oct. 2, 1965 Where Played Ellenton, Fla. Authenticated by William Knapp and _____

FLORIDA STATE vs. BAYLOR

OCTOBER 2, 1965
8:00 p. m.

OFFICIAL
PROGRAM
50c



DOAK S. CAMPBELL
STADIUM
•
Legislative
Day





A Message To Florida State Fans

Friends of Florida State University—

At our first home football game of the season we are pleased to honor the members of the Florida Legislature who have through the years supported quality higher education at Florida State, and throughout Florida.

As you pass through the campus of Florida State University today, you see tangible evidence of the Legislature's interest in higher education. There are many new buildings in use, other new buildings under construction and still more new buildings on the drawing boards. All of these were approved by the far-sighted members of the Legislature who believe, as we do, that our state and nation's future depends on a quality educational system.

More important, however, than new buildings, badly needed as they are, is the excellence of our faculty and staff. We have at Florida State University a dynamic, enthusiastic group of men and women who are dedicated to the proposition that this University must provide quality education for all who study with us. We have a faculty and staff which recognizes the responsibility to serve the people of Florida. We have a faculty and staff which almost daily discovers and produces new knowledge for the benefit of all mankind. Public support reflected through legislative action has made this high calibre faculty and staff a reality of today rather than just a dream for tomorrow.

We welcome today also the growing number of Florida State University supporters from Tallahassee and many surrounding counties, some from far away.

On behalf of our faculty, staff and our 13,200 outstanding students, I extend a very warm welcome to each of you. You are always welcome at the Florida State University.

From The President

Cordially,
John E. Champion

"... Let the soldier be abroad if he will; he can do nothing in this age. There is another personage, a personage less imposing in the eyes of some, perhaps insignificant. The Schoolmaster is abroad, and I trust to him, armed with his primer, against the soldier in full military array." —Lord Brougham, Speech, Opening Parliament, January 29, 1828.

PROFILES

OF A

TEACHER

PLEASE TURN THE PAGE ➔

Florida State's salute to the teacher in today's Legislative Recognition Day Program brings to bear the enduring significance of these words in 1965 . . .

Geology Building Named for Senator F. Wilson Carraway

Highlighting today's round of activities for legislators and state officials were the 2 p.m. ceremonies naming Florida State's Geology Building in honor of Leon County's distinguished Senator, the Hon. F. Wilson Carraway Sr., "who has diligently espoused the cause of the University and higher education."



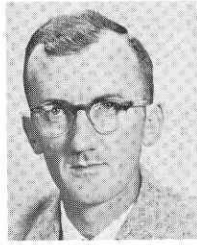
FLORIDA STATE'S ATHLETIC COMMITTEE



Mode L. Stone,
Chairman
Dean, School of
Education



Coyle E. Moore
Dean, School of
Social Welfare



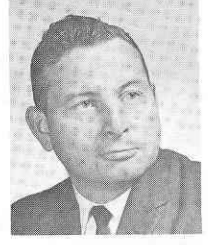
Elston Roady
Professor,
Government



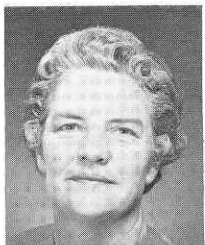
Thomas Wright
Assoc. Professor,
Music



Claude Flory
Professor, English



Robert Earnest
Professor, Business



Mary Alexander
Assoc. Professor,
Physical Education
and Recreation



J. M. Plant
Assoc. Professor,
Engineering Science

GO-GO SEMINOLES

CHICK-N-TREAT

TAKE OUT BOXES

Located Two Blocks

From Stadium

1342 Jackson Bluff Rd.—224-4425

MIDYETTE-MOOR

Insurance Agency

"Ask Those We Serve"

Complete Insurance and Bond Service

PHONE 222-3456



**MIDYETTE-MOOR BUILDING
TALLAHASSEE, FLORIDA**

SAYS

SCALP 'EM SEMINOLES!



Payne Midyette
Frank Moor
Ed Clark
Winslow Sullivan
Bob Dickinson
Paul Lewis
Payne Midyette, Jr.

Bill Moor
Bill Franklin
Glenn Sears
Dick Wall
Don Northcut
Rex Sikes
Mike Lee

**BENNETT'S
DRUG STORE**

- Prescriptions
- Cameras
- Sundries
- Gifts
- Fountain
- Cafe
- Cosmetics
- Drugs

MEET ME AT BENNETT'S

BEFORE AND AFTER THE GAME!

Corner Monroe and College Streets

Phone 222-8980 — 222-4450

DON JAMES
First Assistant
Defensive Chief



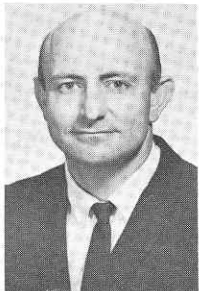
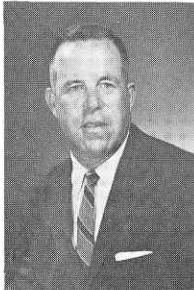
BOB HARBISON
Defensive Line



NEIL SCHMIDT
Defensive Ends,
Linebackers



KEN MacLEAN
Head Recruiter



BILL CRUTCHFIELD
Offensive Chief



DON POWELL
Offensive Line



BOBBY BOWDEN
Receivers



BILL PROCTOR
Freshman



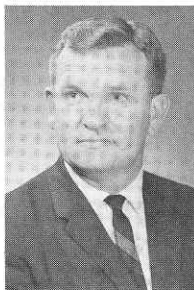
BILL PETERSON
Head Football Coach

THE SEMINOLE FOOTBALL FAMILY

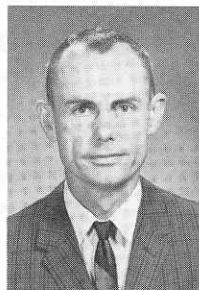
RONALD MELTON
Business
Manager



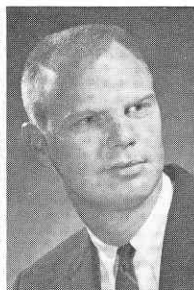
JEFF SAVAGE
Academic
Advisor



CLAUDE THIGPEN
Ticket Manager



BILL BUNKER
Sports
Information



DR. R. P. JOHNSON
Team Physician



DON FAULS
Head Trainer



PHIL CALLICUTT
Trainer

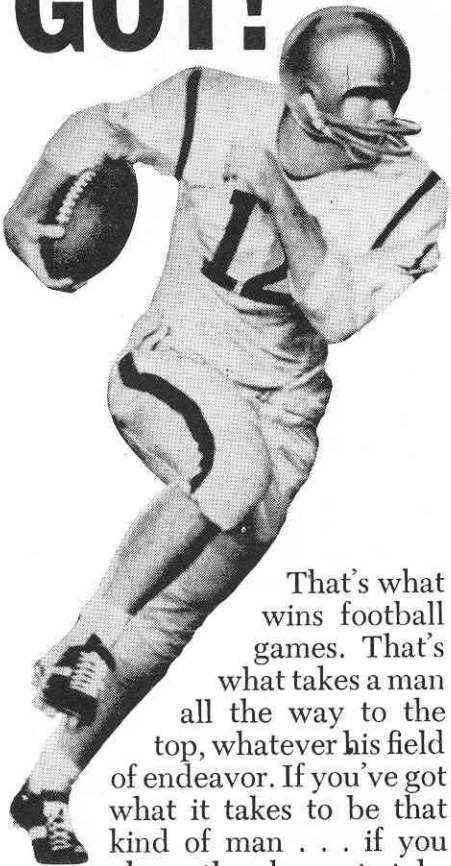


TILLMAN DIXON
Equipment
Manager

VAUGHN MANCHA
Director of Athletics



GIVE IT
EVERY-
THING
YOU'VE
GOT!



That's what wins football games. That's what takes a man all the way to the top, whatever his field of endeavor. If you've got what it takes to be that kind of man . . . if you have the chance to take ROTC, make what you've got count. Go for an Army commission. That way, come commencement, you'll have two good things going for you: your college degree, and the gold bars that mark you a leader of men . . . tested, trained, trusted.

GET IN—
STAY IN
ARMY ROTC!

TONIGHT'S TEAMS
A Statistical Comparison

FLORIDA STATE
Results (0-1)
3 TCU 7

BAYLOR
Results (2-0)
14 Auburn 8
17 Washington 14

TEAM STATISTICS

108	Yards Rushing	187
128	Yards Passing	481
236	Total Offense	668
29	Passes Attempted	65
14	Passes Completed	36
2	Passes Had Intercepted	2
5	Punts	15
33.8	Punting Average	30.4

INDIVIDUAL LEADERS

Rushing

Name	Times	Yards	Avg.	Name	Times	Yards	Avg.
Petko	11	40	3.6	Defee	21	125	5.9
Spooner	4	23	5.7	Hayes	20	71	3.5
Giardino	9	19	2.1	Wilson	9	38	4.2

Passing

Name	Att	Comp	Yards	TD	Name	Att	Comp	Yards	TD
Pritchett	29	14	128	0	Southall	65	36	481	3

Receiving

Name	Caught	Yards	TD	Name	Caught	Yards	TD
Wettstein	4	42	0	Lane	19	219	0
Blankenship	3	28	0	Cheshire	6	138	2
Spooner	2	13	0	Becton	3	40	0
				Walker	3	29	0

Punting

Name	No.	Avg.	Name	No.	Avg.
Hosack	5	33.8	Head	15	30.4

Scoring

Name	TD	FG	PAT	Total	Name	TD	FG	PAT	Total
Roberts	0	1	0	3	Cheshire	2			12
					Purvis	0	1	4	7

The Vogue

TALLAHASSEE, FLORIDA

TRAVELING
DESSERT TRAYS

FAMOUS
TOWN HOUSE
ROAST
PRIME RIB
OF BEEF



ALL TIME FLORIDA STATE RECORDS

SINGLE GAME

Individual

TOUCHDOWNS SCORED—4 by Fred Biletnikoff vs. Oklahoma, Gator Bowl, 1965

LONGEST TOUCHDOWN RUN FROM SCRIMMAGE—80 yards by Fred Pickard vs. Virginia Tech, 1957

LONGEST TOUCHDOWN PASS—80 yards, Nelson Italiano to Eddie Gray vs. Newberry, 1950

LONGEST TOUCHDOWN RUN ANY SITUATION—99 yards by Ted Hewitt vs. Stetson, 1948 and Fred Biletnikoff vs. Miami, 1963 (interception return)

LONGEST RUN FROM SCRIMMAGE WITHOUT SCORING—76 yards by Roy Thompson vs. Stetson, 1951

LONGEST INTERCEPTION RETURN—99 yards by Ted Hewitt vs. Stetson, 1948 and Fred Biletnikoff vs. Miami, 1963

LONGEST PUNT RETURN—80 yards by Billy Odom vs. Stetson, 1954

LONGEST KICKOFF RETURN—89 yards by Billy Odom vs. Va. Tech, 1955

LONGEST PUNT—84 yards by Tommy Brown vs. Tampa, 1950

LONGEST FIELD GOAL—44 yards by Les Murdock vs. Virginia Tech, 1963

TIMES RUSHING—29 by Fred Pickard vs. Georgia, 1949

YARDS RUSHING—161 by Buddy Strauss vs. Mississippi College, 1949

PASSES ATTEMPTED—39 by Steve Tensi vs. Virginia Tech, 1964

PASSES COMPLETED—23 by Steve Tensi vs. Oklahoma, Gator Bowl, 1965

YARDS PASSING—313 by Joe Majors vs. Tampa, 1959

TOUCHDOWN PASSES—5 by Steve Tensi vs. Oklahoma, Gator Bowl, 1965

TOTAL OFFENSE—369 yards by Joe Majors vs. Tampa, 1959 (56 rush, 313 pass)

PASSES CAUGHT—13 by Fred Biletnikoff vs. Oklahoma, Gator Bowl, 1965

YARDS RECEIVING PASSES—192 by Fred Biletnikoff vs. Oklahoma, Gator Bowl, 1965

TOUCHDOWN PASSES CAUGHT—4 by Fred Biletnikoff vs. Oklahoma, Gator Bowl, 1965

PASSES INTERCEPTED—3 by Tommy Brown vs. Stetson, 1950; and Georgia Tech, 1952; Lee Corso vs. Georgia, 1954; and Bud Whitehead vs. Virginia Tech, 1959

FIELD GOALS—3 by Les Murdock vs. Florida, 1964.

TEAM

POINTS SCORED—74 vs. Whiting Field, 1949

MARGIN OF VICTORY—74-0 vs. Whiting Field, 1949

MARGIN OF DEFEAT—0-42 vs. Georgia, 1959

YARDS RUSHING—383 vs. Abilene Christian, 1957

YARDS PASSING—355 vs. Villanova, 1954

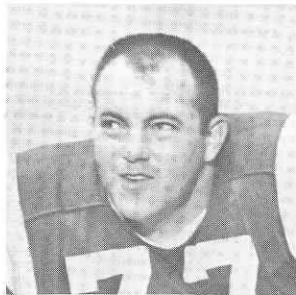
TOTAL OFFENSE—526 vs. Furman, 1962 (277 rush, 239 pass)

PASSES ATTEMPTED—40 vs. Virginia Tech, 1964

PASSES COMPLETED—23 vs. Oklahoma, Gator Bowl, 1965

PASSES INTERCEPTED—7 vs. Virginia Tech, 1959

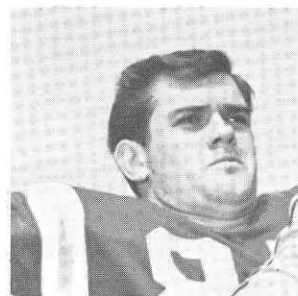
PUNTS—10 vs. Georgia Tech and Stetson, 1955



Bob Mangan

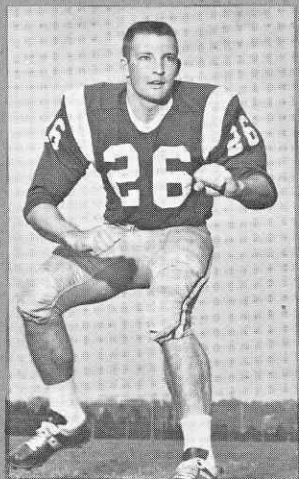


Joe Petko

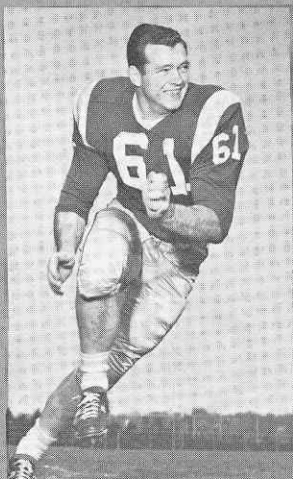


John Hosack

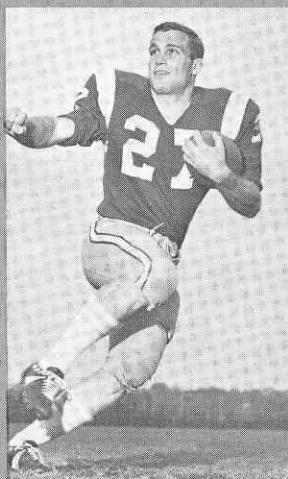
Introducing...the FLORIDA STATE UNIVERSITY 65 SEMINOLES



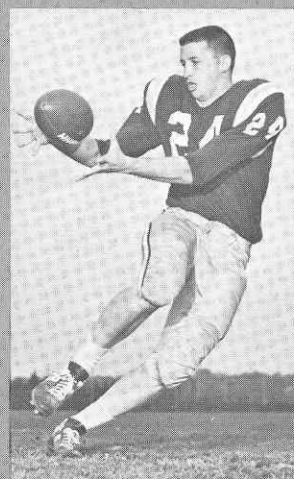
Bill Campbell



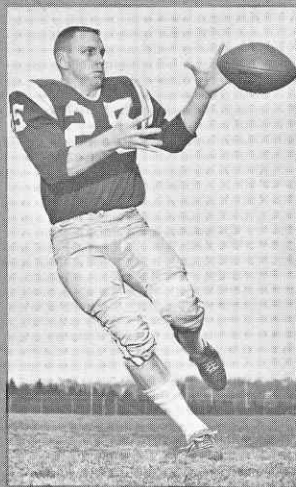
Jack Shinholser



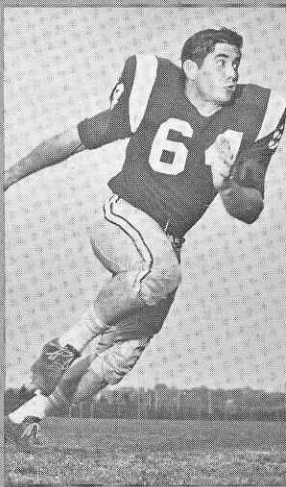
Phil Spooner



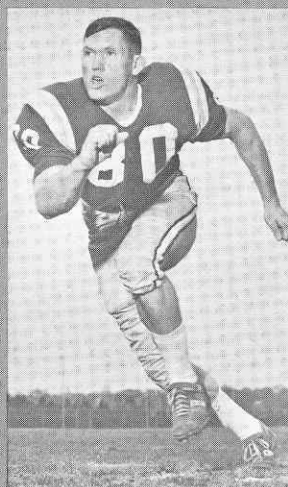
Elton Revell



T. K. Wetherell



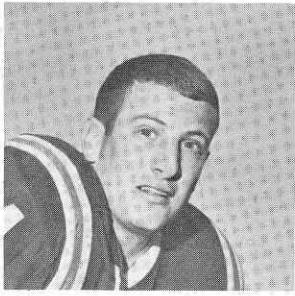
Dave Braggins



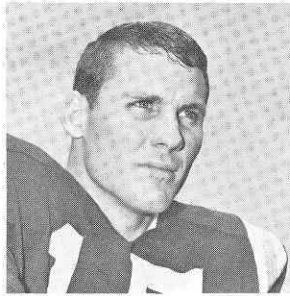
H. T. Waller



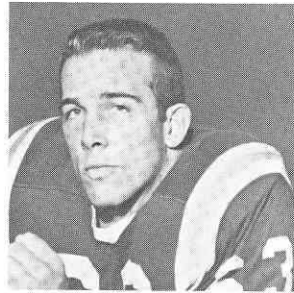
Jay Matthews



Jim Massey



Pat Conway

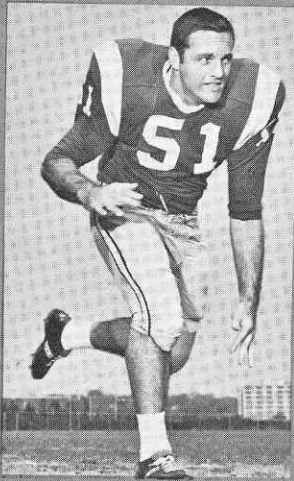


Bill McDowell

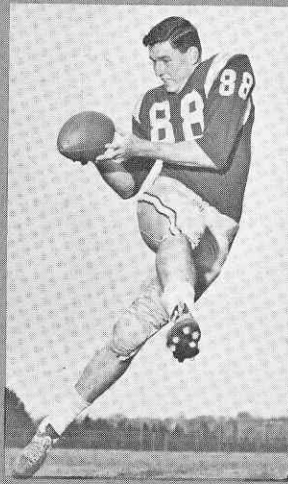


Thurston Taylor

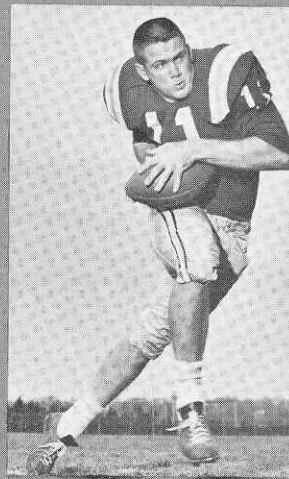
FLORIDA STATE UNIVERSITY 65 SEMINOLES



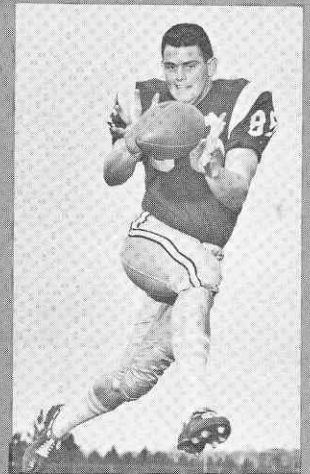
Joe Avezzano



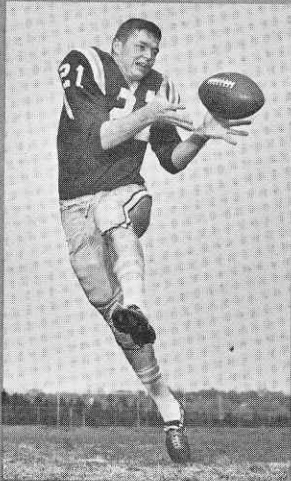
Stan Croley



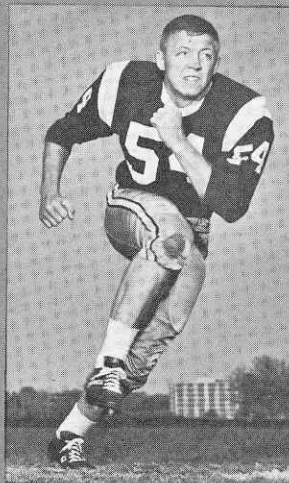
Kim Hammond



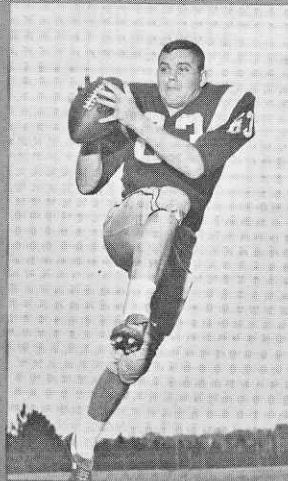
Buddy Blankenship



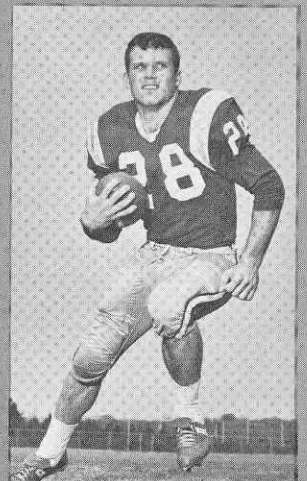
Bill Cox



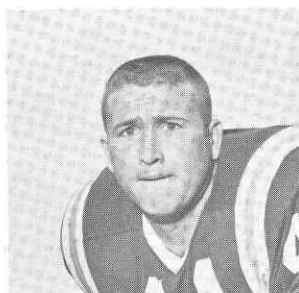
John Stephens



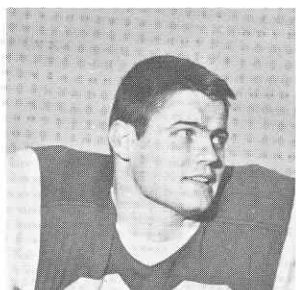
Jerry Jones



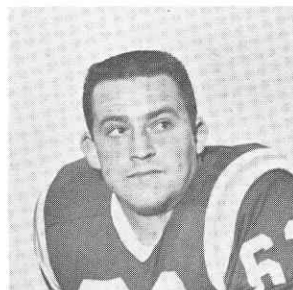
Bill Moreman



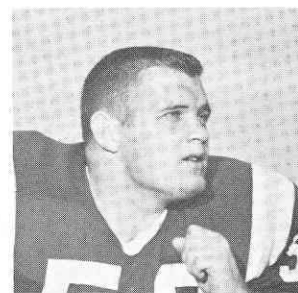
Bob Menendez



Edwin Pope

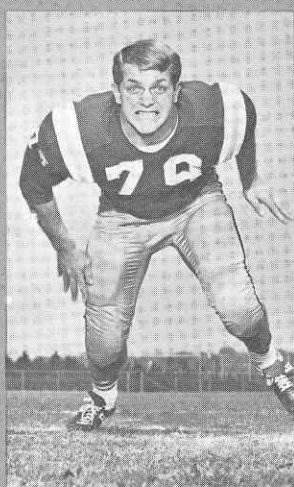


Howard Lurie

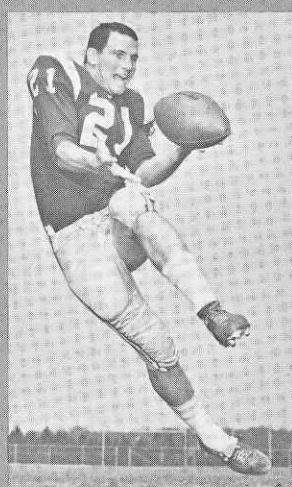


David Pitts

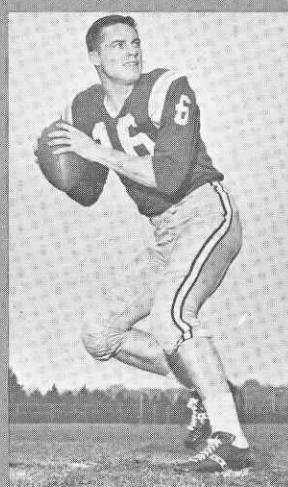
the FLORIDA STATE UNIV



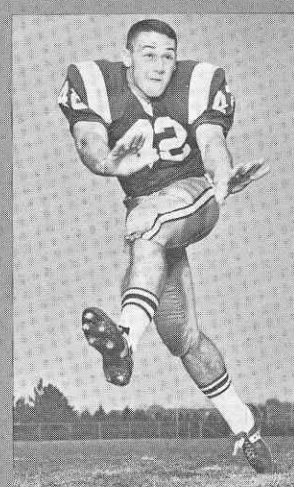
Frank Pennie



Donovan Jones



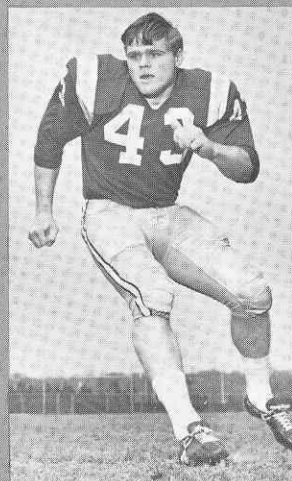
Ed Pritchett



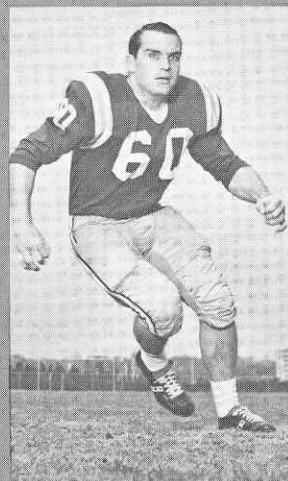
Bill Richardson



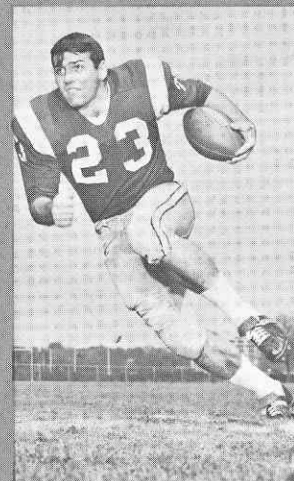
Joe Parrish



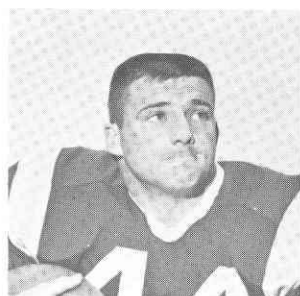
Howard Ehler



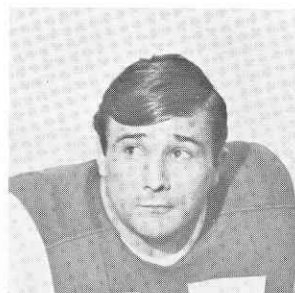
Larry Williamson



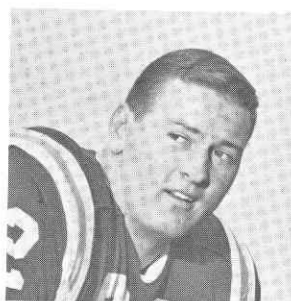
Wayne Giordino



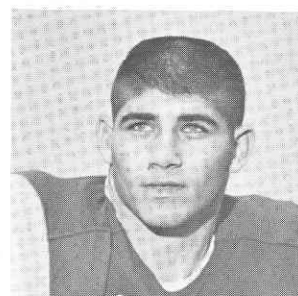
Jim Mankins



Terry Garvin



Wayne McDuffie

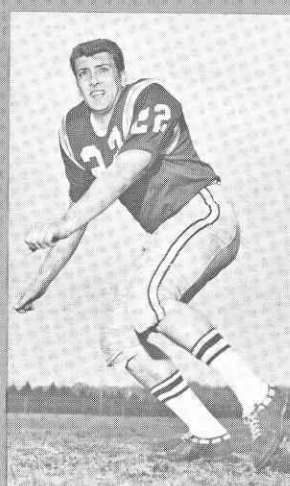


Mike Blatt

UNIVERSITY 1965 SEMINOLES



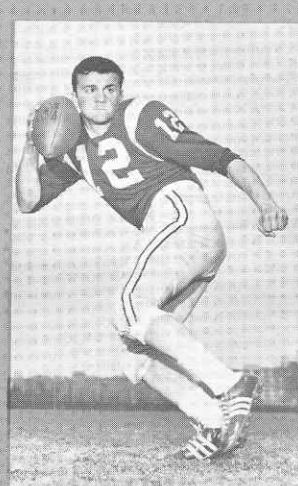
Charles Pennie



Maury Bibent



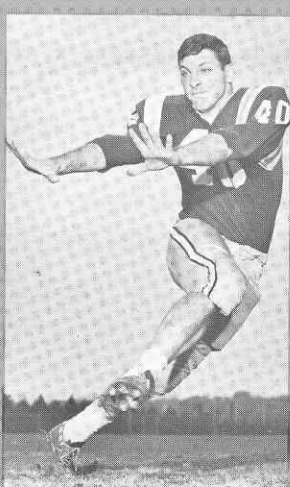
George D'Alessandro



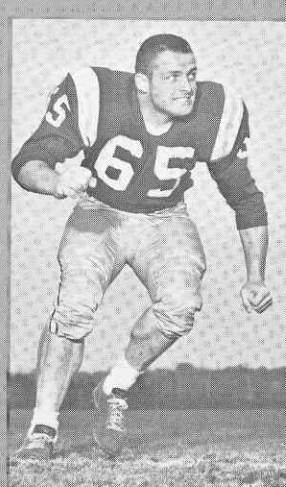
Tony Gero



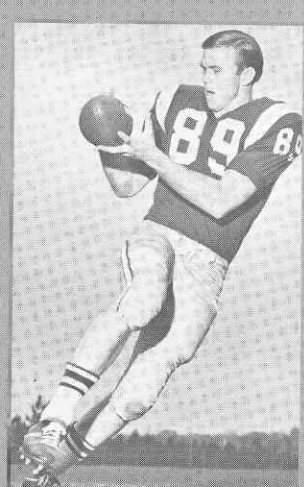
Carl McNeil



James Riser



Dave Hall



Max Wettstein

THE WTNT SEMINOLE NETWORK



HARRY HUGHEY

BO MITCHELL

Popular Bo Mitchell returns to the Seminole microphone for the third straight season, bringing play-by-play action to every corner of the Sunshine State.

The energetic Mitchell, an ex-naval aviator with more than 16 years broadcasting experience, is vice-president and station manager of station WCOA, Pensacola.

His partner at the mike this season is Harry Hughey, a former Florida State football player. A veteran radio man, Hughey handles pre-game, half-time and time-out commentary.

Originating station for the network is WTNT, Tallahassee.

THE SEMINOLE NETWORK

WCOA Pensacola	WSPB Sarasota
WZET Defuniak Springs	WMYR Fort Myers
WPCF Panama City	WGBS Miami
WTOT Marianna	WTRK West Palm Beach
WTNT Tallahassee	WLBE Leesburg
WDSR Lake City	WCNH Quincy
WPRY Perry	WFTW Fort Walton Beach
WJAX Jacksonville	WMAF Madison
WGGG Gainesville	WFOY St. Augustine
WMOP Ocala	WYDE Birmingham, Ala.
WKIS Orlando	WPAX Thomasville, Ga.
WLAK Lakeland	WSB Atlanta, Ga.
WDAE Tampa	

Follow the SEMINOLES IN '65

**STANDARD
OIL**

RADIO NETWORK

WJAX
Jacksonville

WGBS
Miami

WDAE
Tampa

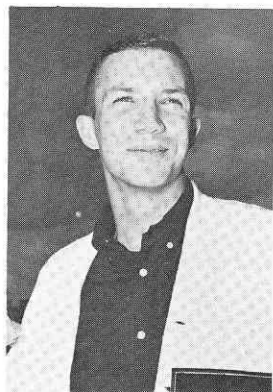
WTNT
Tallahassee

WCOA
Pensacola

WKIS
Orlando

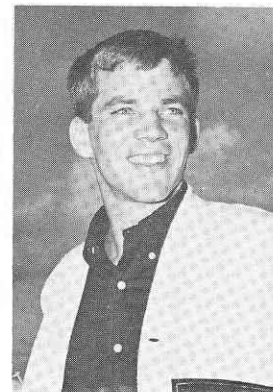


**YOUNG HO!
GO CHEVRON!**



SEMINOLE CHEERLEADERS

The 1965 Seminole Cheerleader Squad takes its signals from Head Cheerleader Toni Beals (above center), a winsome junior from St. Augustine. Shown to her left is a newcomer to the squad, sophomore Joyce Howser of West Palm Beach; and to her right, Peggy Thompson, a junior from Ormond Beach. Senior member of the team is Elbert Lambert (at right) of Tallahassee. Sophomore Dave Deutsch (at left) of Palatka, is another seasoned member of the squad.



THE ALMA MATER

High o'er the towering pines our voices swell
Praising these Gothic spires we love so well;
Here sons and daughters stand . . .
Faithful and True, Hailing our Alma Mater
F . . . S . . . U . . .

FSU FIGHT SONG*

We're going to FIGHT, FIGHT, FIGHT,
for FSU
We're going to scalp 'em Seminoles . . .
We're going to WIN, WIN, WIN, WIN,
WIN this game . . . and roll on down and
make those goals!
For FSU is on the warpath now, and at the
battle's end she's great . . .
So FIGHT, FIGHT, FIGHT, FIGHT for
victory
Our Seminoles of Florida State . . .
F-L-O-R-I-D-A S-T-A-T-E
FLORIDA STATE! (3 times)

THE FLORIDA STATE VICTORY MARCH*

Onward to victory, Seminoles, GO! FORWARD MARCH, we must move out together and . . .
FORWARD MARCH, it's always marching weather when thousands strong, we swing along.
All in step for VIC . . . TO . . . RY. Our F-S-U and all our loyal Seminoles, ON-WARD
GO . . . To conquer all our savage foes . . . won't be long . . . we can't go wrong . . . we
will crush the EN . . . E . . . MY . . . So SCALP'EM . . . SCALP'EM . . . SCALP'EM . . .
It's a case of do or die . . .
Strike the fatal thrust, we'll be victorious; with terrible tenacity we can, we will, we must!

FORWARD MARCH, we'll ride the swelling battle tide
FORWARD MARCH, we'll face the future side by side
With our might, we'll FIGHT, FIGHT, FIGHT!
And we'll win our VIC-TO-RY.
. . . For Florida State University.

* Written by Thomas G. Wright, Associate Professor Music at Florida State University.

University Union

"Serving the entire University Community"

Lounges

Food Service

Barber Shop

Beauty Salon

Bowling

Color Television

Faculty-Staff Lounge

Games Check-Out

Union Store

Bookstore

Bicycle Rental

Swimming Pool

Art Exhibits

Ticket Office

Billiards

CAMPUS INFORMATION CALL 3317



THE SEMINOLE
"TWINS"

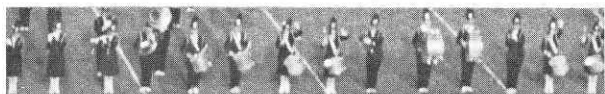
Bookie Reynolds & Jerry Williams

MEET THE BAND

MUSIC AT HALF TIME

October 2, 1965

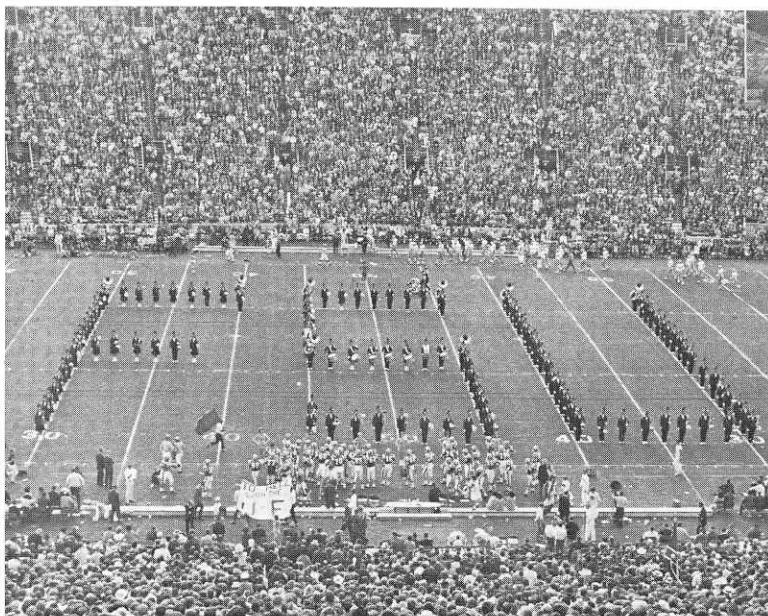
THE MARCHING CHIEFS



Robert T. Braunagel, Director
Clifford K. Madsen, Associate Director
Charles Carter, Asst. Dir. & Arranger



Camp Kirkland, Drum Major
Paulette Gergen, Head Majorette
"Cookie" Winchester, Baton Artist



MUSIC

MEET THE BAND

SILENT DRILL

KREUTZER ETUDE

WHO

HEY, LOOK ME OVER!

VOLGA BOATMAN

BEGIN THE BEGUINE

GARNET & GOLD MARCH

COMING HOME

FIGHT SONG

FORMATIONS

INTRODUCTION of the various sections of the band—the tubas . . . trombones . . . french horns . . . trumpets . . . woodwinds . . . majorettes . . . Seminole twins . . . and solo twirler.

A SILENT DRILL sequence involving the basic marching fundamentals. A-B-C- . . . Band sections audition for musical examination & grades.

QUESTION MARK . . . "Who" will make the band?

LYRE . . . Band shows off new uniforms in this instrument formation.

BAND BLOCK . . . Signifies hard work and many hours of band practice.

DRILL . . . Combines precision drills to musical selection.

CHIEFS . . . Features a salute to 150 members of the Marching Chiefs.

TREBLE AND BASS CLEF . . . Grand finale and salute to the audience.

F-S-U . . . Band forms letters on the field while stadium fans sing.



GO TO

McDONALD'S

FOR A

PURE BEEF HAMBURGER

Right off the Grill on a Plump Toasted Bun

TRIPLE THICK SHAKE

M'M'M' Creamy Luscious to the Very Last Drop

GOLDEN BROWN FRENCH FRIES

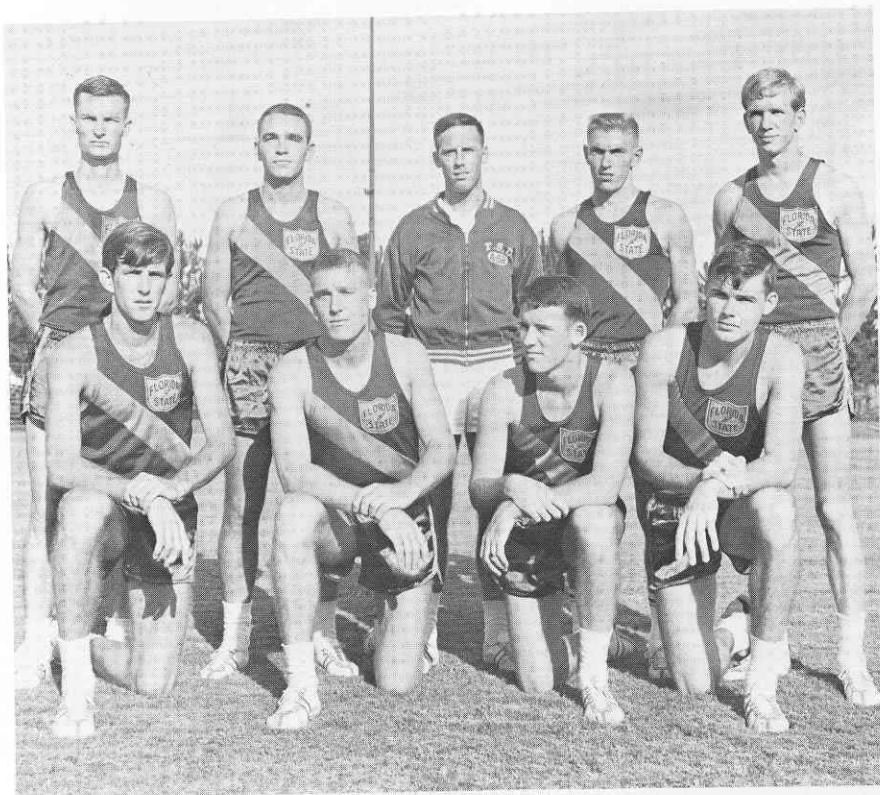
Piping Hot and Done to a Crisp Perfection

Home of America's Favorite Hamburger
More Than a Billion Sold

LOOK FOR THE GOLDEN ARCHES

McDONALD'S

1701 W. TENNESSEE ST.
CORNER WHITEHALL



THE 1965 FLORIDA STATE CROSS-COUNTRY TEAM: Front row, left to right: Ross Winter, Al Bassett, Sid Merchant, and John Brogle. Second row: Tom Graham, Richard Carrico, Coach Dick Roberts, Bob Hohnadel, and Bill Nelson.

**Florida State University
Cross-Country**

1965 Schedule

DATE	TEAM	PLACE
Sept.		
25	South Florida at	Tampa
28	Chipola Jr. Col. at	Tallahassee
Oct.		
11	Florida at	Gainesville
15	Ga. Tech Inv. at	Atlanta, Ga.
23	Callaway G. Inv. at	Pine Mountain Ga.
26	Auburn at	Tallahassee
Nov.		
6	Uni. South Florida at	Tallahassee
15	Florida at	Tallahassee
20	Miami at	Miami
27	Fla. St. Champ. at	Gainesville
Dec.		
4	Troy Invitational at	Troy, Ala.

FLORIDA STATE UNIVERSITY VS BAYLOR
October 2, 1965

Doak S. Campbell Stadium Tallahassee, Fla.
Temperature: 80 Wind: from West 6 mph. Weather: clear

FSU CO-Captains:

George D(Alesandro
Max Wettstein
Bill McDowell

Baylor CO Captains:

Mike Bourland
Bill Ferguson

FSU wins toss and will receive, Baylor will defend the north goal

Hayes kicks to Moreman returns to 38

FS38 1-10 Pritchett passes incomplete
FS38 2-10 Giardino thru tackle to 43
FS43 3-5 Pritchett keeps, pass incomplete
FS43 4-5 Cheshard ~~kicks~~, returns to 20 Kicked by ~~Hayes~~
B21 1-10 Pass complete to lane on B35
B35 1-10 Pass incomplete to Cheshire
B35 2-10 Defee thru tackle 1yd.
B36 3-9 Pass smothered, loss to 18, penalty refused
B22 4-23 Kick to Bivent out of bounds on S41
FS41 1-10 Giardino thru line to 44
FS45 2-6 Pritchett keeps, pass es to Jones at B40
B40 1-10 Pass incooplete to Wetherell
B40 2-10 Pritchett pass complete to Giardino at 23
B23 1-10 Mankins thru line no gain
B23 2-10 Pritchett to Spooner, no gain, penalty Lawrence
B23 2-15 Spooner around l. end, to 22
B22 3-8 Pritchett pass incomplete to Spooner
B22 4-8 Roberts kicks field goal Time 9:05

FSU 3

Baylor 0

Roberts

FSU Kicks to Cheshire on 18

Baylor ball

B18 1-10 Marshall thru line to 24
B24 2-5 Marshall to 30 Conway
B30 1-10 Marshall passes incomplete Lane
B30 2-10 DeFee around right Penny
B34 3-6 Pass incomplete to Cheshire First down
B41 1-10 DeFee around l. end to 46
B47 2-4 DeFee thru r. tackle to FS 24
FS24 1-10 Hayes tackled by Shinholser
FS 20 2-6 Marshall recovers fumble
FS 21 3-7 Marshall takes pass in end zone TD

FSU 3

Baylor 6

Kick is good by Purvis

FSU 3

Baylor 7

5:28

Shafner kicks to FSU Petko on FS31

FS31 1-10 Spooner around left end to 35
FS35 2-6 Pass incomplete to Spooner
FS35 3-6 Pass incomplete to Wetherell
FS35 4-6 Hozak kicks to Cheshire tackled by Wetherell

Baylor ball

B23 1-10 Marshall keeps Garvin
B20 2-13 Marshall keeps Bibet
B25 3-8 Marshall pass incomplete to Green
B25 4-8 Hedd kicks to Campbell returns to B44

FSU Ball

FS B 44 1-10 Pritchett pass complete Jones on 23 1st d.
B33 1-10 Pritchess pass mc. to Jonrs. deflected by Hood
B33 2-10 Pritchett pass intersepted by Anderson

Baylor ball

B34 1-10 Hayes thru center to 37
B37 2-6 Hayes thru line to 40 Shinholser
B40 3-4 Defee around r. end McDowell11

B43	1-10	Defee around r. end Parrish
B44	2-8	Defee fell over Hayes lose to 43

End of First Quarter

FSU	3	Baylor	7
-----	---	--------	---

Second Quarter FSUvs Baylor

B43 3-10 Marshall thru line then pass to Cheshire inc.
B43 4-10 Hedd kicks to Bibett on 17

FSU 15

FS15 1-10 Giardino thru line Barringer
FS16 2-19 Spooner around l. end
FS19 3-5 Prichett keeps to 23 Jones
FS23 4-2 Hozack kicks to Cheshire tackled on 37 by Spooner

B39 1-10 Hayes around r. end Biber penalty
B27 1-22 Marshall thru line no gain
B26 3-23 Marshall passes incomplete to Pittard
B40 4-9 Hedd kicks to Bibett on 22 fair

FS21 1-10 Spooner thru tackle Gerringer
FS25 2-6 Prichett keeps to 31
FS31 3-1 Pritchett shovels to Mankins no gain Anderson
FS31 4-1 Spooner around r. end to 32 Whitted
FS32 1-10 Spooner thru line penalty Van Sant
FS17 1-25 Mankins around l. end to 29 Jones
FS29 2-13 Giardino thru line Jones
FS 38 3-4 Prichett pass incomplete to Wetherell Whidden
FS38 4-4 Hozack kicks to Cheshire out of bounds on B17

B17 1-10 Marshall thru line Penny
B19 2-8 Defee thru tackle to 29 Parrish
B30 1-10 Defee around r. end to 44 Ehler
B44 1-10 Defee around r. end McDowell
B47 2-7 Marshall McDowell on tackle
B47 3-1 Defee
FS39 1-10 Marshall pass incomplete to Green
FS39 2-9 Marshall pass incomplete to Walker
FS39 3-25 Marshall passes to Green Conway
BS 44 3-15 Marshall pass inc. to Walker
FS44 4-15 Hedd kicks to Campbell fair 18

FS18 1-10 Spooner thru line Hood
FS18 2-10 Spooner loses to 14 Haney
FS14 3-14 Prichett keeps pass inc. to Wetstein
FS14 4-14 Hozack kicks to Cheshire, trapped on B 46 Williams

Baylor ball clipping penalty against Baylor
B36 1-10 Marshall pass to Walker Parrish
B47 2-10 Marshall pass inc. to Walker holding
B32 1-25 Marshall pass inc. Bibett breaks it
B32 2-25 Marshall pass inc. to ~~CM~~ Pittard
B32 3-25 Marshall pass to Bibett (intercept).

fumble recovered Campbell

FSU Ball

FS38 1-10 Prichett pass comp. to Wetherell Williams 8 yds.
FS 46 2-2 Prichett pass inc. to Wetherell
FS 46 3-1 Prichett pass inc. to Revell
FS46 4-1 Hozack kicks to ~~CM~~ fumbled recovered by D. Jones
Joe Jones 35 yds
B35 1-10 Giardino pass intercept by Whidden intended for Revell 15

B15 1-10 Defee stopped by McDowell
B16 2-11 Hayes around l. end Conway
B30 1-10 Marshall keeps, passes intercepted by
Campbell, Marshall on tackle at FS34
12 yard return as half ends.
End of Half

FSU 3

Baylor 7

FLASH FOOTBALL STATS

Quick Halftime and After Game Reports of Vital Team Statistics and Individual Leaders

HALFTIME

Circle One

FINAL

TEAM STATISTICS

	<u>FSU</u>	<u>BAYLOR</u>
First Downs	<u>4</u>	<u>8</u>
Rushing Yardage (Net)	<u>57</u>	<u>109</u>
Passing Yardage (Net)	<u>52</u>	<u>81</u>
Passes (Completions-Attempts)	<u>4-17</u>	<u>5-15</u>
Passes intercepted by	<u>2</u>	<u>2</u>
Punts (Number-Average)	<u>6-37.6</u>	<u>5-37.6</u>
Fumbles Lost	<u>1</u>	<u>1</u>
Yards Penalized	<u>5</u>	<u>82</u>

INDIVIDUAL LEADERS

FSU

RUSHING	Air'd	Net Yards	Avg.
<u>Giardina</u>	<u>4</u>	<u>19</u>	<u>4.8</u>
<u>SPOONER</u>	<u>2</u>	<u>16</u>	<u>8.0</u>
<u>MANLINE</u>	<u>3</u>	<u>14</u>	<u>4.7</u>

PASSING	Air'd	Compl.	Had Int'd	Net Yards
<u>FRITCHETT</u>	<u>16</u>	<u>4</u>	<u>1</u>	<u>52</u>
<u>Giardina</u>	<u>1</u>	<u>0</u>	<u>1</u>	<u>0</u>

PASS RECEIVING	No. Rec'd	Net Yards	For TD
<u>J. JONES</u>	<u>2</u>	<u>21</u>	<u>—</u>
<u>Giardina</u>	<u>1</u>	<u>17</u>	<u>—</u>
<u>Watkins</u>	<u>1</u>	<u>9</u>	<u>—</u>

BAYLOR

RUSHING	Air'd	Net Yards	Avg.
<u>DEFFE</u>	<u>11</u>	<u>67</u>	<u>6.1</u>
<u>HAYES</u>	<u>6</u>	<u>55</u>	<u>9.2</u>
<u>W. MARSHALL</u>	<u>6</u>	<u>20</u>	<u>3.3</u>

PASSING	Air'd	Compl.	Had Int'd	Net Yards
<u>Marshall</u>	<u>13</u>	<u>4</u>	<u>2</u>	<u>66</u>
<u>SOUTHALL</u>	<u>2</u>	<u>1</u>	<u>0</u>	<u>15</u>

PASS RECEIVING	No. Rec'd	Net Yards	For TD
<u>CHESHIRE</u>	<u>1</u>	<u>21</u>	<u>1</u>
<u>LANE</u>	<u>1</u>	<u>15</u>	<u>—</u>
<u>PITTSBURGH</u>	<u>1</u>	<u>14</u>	<u>—</u>

10-2-65

Florida State University vs Baylor

3rd. Q.

Estimated attendance: 28,900

FSU defends North goal with Roberts kicking

Roberts Kicks to Hayes on 4 returns to 19, McDowell, penalty on B

B9 1-10 Marshall hands to Defee, no gain McDowell
 B9 2-10 Defee thru line for 3 Delessandro
 B13 3-7 Marshall keeps around l. end for 8 Conway
 B20 1-10 ~~XXXXXX~~ thru line for 3 Penny
 B22 2-8 Defee around l. end loss 5 Delessandro
 B18 3-13 Marshall passes inc. to Lane
 B18 4-13 Hedd kicks to Campbell on 38 returns 7 yds 21 yd kick

FS Ball

B31 1-10 Spooner thru line for 2 Ortese
 B29 2-8 Spooner around l. end for 5 Stopped by Garringer
 B24 3-3 Giardino thrown for loss of 5 by Lawrence
 B29 4-8 Prichett pass inc. to Wetherell

Baylor Ball

B29 1-10 Defee thru tackle no gain Parrish
 B28 2-11 Hayes around l. end Delassandro, lose 2 Penalty
 personal foul, 15 yds against FSU
 B43 1-10 Marshall pass comp. to Lane Bibett, 5 gain
 B47 2-6 Marshall pass comp. to Pittard, gain 6 Bibett
 FS47 1-10 Marshall pass inc. to Green broken up by Eihler
 FS47 2-10 Marshall passes comp. to ~~JACKSON~~, no gain Eihler
 FS47 3-10 Marshall passes inc. to Piteard
 FS47 4-10 Hedd kicks to Bibett on 16 30 yd kick no return
 FS17 1-10 Diardino thru line 4 yds. Ortez
 FS21 2-6 Prichett keeps for 4 thru line
 FS24 3-3 Mankins thru tackle for 2 Hood, measuring short 6"
 FS27 3-1 Hozack kicks to Cheshire on 37 return 7 Williamson
 40 yd. kick
 B44 1-10 Marshall passes inc. to Lane
 B44 2-10 Marshall pass inc. to Walker stopped by McDowell
 B44 3-10 Marshall passes inc. to Lane broken up by Bibett
 B44 4-10 Hedd kicks to Bibett on 18 return 1 38 yd. kick

FS Ball

FS19 1-10 Mankin thru center for 8 stopped by Jones
 FS27 2-2 Mankin thru line for one
 FS29 3-1 Mankin thru line for loss of one
 FS28 4-1 Hozack kicks to Cheshire on B29 2 Revell 44 yd. Kick
 B31 1-10 Hayes around r. end Garvin & Bibett lose 1
 B30 2-11 Marshall thru line for 4 Parrish
 B33 3-8 Marshall ~~XXXXXX~~ carries for 6 McDowell Mathews
 B39 4-2 Hedd kicks to Bbett at 39 return 5 Bovenzi 32 yd.
 FS35 1-10 Prichett passes inc. to Wetherell
 FS35 2-10 Prichett passes to ~~WETSTEIN~~ Revell 14 yds First D.
 FS48 1-10 Prichett pass inc. to Wetstein as quarter ends

FSU 3 Baylor 7

END Third Quarter

Fourth Quarter
 FS48 1-10 Prichett pass comp. to Giardino for 8
 B45 2-2 Spooner around l. end lose 3 Anderson
 B47 4-5 Hozack kicks to Cheshire on end zone 47 yd kick

Baylor Ball
 B20 1-10 Hayes thru tackle for 13 Shinholser
 B32 1-10 Marshall pass inc. rushed by Shinholser
 B32 2-10 Southall with broken leg now sitting on sidelines
 B32 2-10 Marshall passes comp. to Cheshire for 12 penalty tackled by Eihler personal foul against Baylor 15
 B29 1-25 Marshall pass inc. to Defee
 B29 2-25 Marshall passes inc. to Lane
 B29 3-29 Marshall passes inc. to Lane broken up by Campbell
 B29 4-29 Hedd kicks to FSU33 fair down by Baylor 47 yd kick.

FS33 1-10 Giardino thru line 3 yds
 FS36 2-7 Prichett pass complet to Mankins, fumble recovered by Ferguson at FSU49

B49 1-10 Marshall passes inc. to Lane broken by Biven
 B49 2-10 Marshall thru line for 2 Delassandro
 FS49 3-8 Marshall around r. end for 5 Gorman and Parrish
 FS44 4-4 Hedd kicks to end zone 44 yd kick.

FSU Ball
 FS20 1-10 Prichett pass to Wetherell incomplete
 FS20 2-10 Prichett pass complete to J. Jones for 7
 FS27 3-3 Prichett pass inc. to Revell
 FS27 4-3 Hozack kicks to Cheshire lets roll dead on B28 45 yds.

B 28 1-10 Hayes thru r. tackle for 3 Garvin
 B32 2-7 Defee thr l. thackle for 3 Delassandro
 B34 3-4 Marshall around r. end gain 1 Bibett
 B35 4-3 Hedd kicks to Campbell on 27 41 yd kick, loss to 24

FSU Ball
 FS24 1-10 Prichett pass inc. to Jonathan
 FS24 2-10 Spooner thru line gain 5 Berringer
 FS29 3-5 Prichett passes complete to Revell on 40 good for 6
 FS41 1-10 Prichett breaks loose down sideline pass to Wetherell continues down sideline for TD Pass 59 yds.

FSU 9 Baylor 7
 Roberts kick no good
 FSU 9 Baylor 7 5:16

Roberts kicks of for FSU to Hayes at 3 returns tol9 tackled by Bivent

B17 1-10 Marshall passes complete to Bovensi on FSU48
 31 yds on pass
 FS47 1-10 Marshall passes compl to Cheshire 3 yds , personal foul against FSU
 FS29 1-10 Defee around end for 2 McDowell
 FS27 2-8 Marshall tried to pass stopped by DElessandro lose 6
 FS33 3-18 Marshall passes complete to Cheshire for 11
 FS22 4-4 Field goal try no good by Purvis 32 yds att.

FSU Ball
 FS20 1-10 Spooner loses 1
 FS21 2-11 Giardino around r. end gain3 Whidden
 FS23 3-7 Spooner around l. end no gain Barringer
 FS22 4-7 Hozack kicks to Cheshire, drops it on 40, returned 3 fumbled on 43, recovered by L. Williamson
 FS44 1-10 Giardino thru line for 4
 FS48 2-6 Spooner thru tacille no gain Hood
 ES 40 3-6 Giardino gain2 thru line as game ends

Final score:FSU 9 Baylor 7

End of Game

FLASH FOOTBALL STATS

Quick Halftime and After Game Reports of Vital Team Statistics and Individual Leaders

HALFTIME

Circle One

FINAL

TEAM STATISTICS

	<u>FSU</u>	<u>BAYLOR</u>
First Downs	<u>8</u>	<u>15</u>
Rushing Yardage (Net)	<u>89</u>	<u>146</u>
Passing Yardage (Net)	<u>160</u>	<u>151</u>
Passes (Completions-Attempts)	<u>10-28</u>	<u>12-33</u>
Passes Intercepted by	<u>2</u>	<u>2</u>
Punts (Number-Average)	<u>11-40.8</u>	<u>12-35.1</u>
Fumbles Lost	<u>1</u>	<u>2</u>
Yards Penalized	<u>35</u>	<u>106</u>

INDIVIDUAL LEADERS

FSU

RUSHING	Air'd	Net Yards	Avg.
<u>GIARDINO</u>	<u>10</u>	<u>30</u>	<u>3.0</u>
<u>MANKINS</u>	<u>7</u>	<u>24</u>	<u>3.4</u>
<u>SPOONER</u>	<u>15</u>	<u>23</u>	<u>1.5</u>

PASSING	Air'd	Compl.	Net Yards
<u>PRITCHETT</u>	<u>28</u>	<u>10</u>	<u>160</u>
<u>GIARDINO</u>	<u>1</u>	<u>1</u>	<u>0</u>

PASS RECEIVING	No. Rec'd	Net Yards	For TD
<u>WETHERELL</u>	<u>2</u>	<u>68</u>	<u>1</u>
<u>J. JONES</u>	<u>3</u>	<u>33</u>	<u>-</u>
<u>GIARDINO</u>	<u>2</u>	<u>25</u>	<u>-</u>

BAYLOR

RUSHING	Air'd	Net Yards	Avg.
<u>DEFEE</u>	<u>18</u>	<u>68</u>	<u>3.8</u>
<u>HAYES</u>	<u>10</u>	<u>54</u>	<u>5.3</u>
<u>W. MARSHALL</u>	<u>9</u>	<u>29</u>	<u>3.2</u>

PASSING	Air'd	Compl.	Net Yards
<u>MARSHALL, R.</u>	<u>31</u>	<u>11</u>	<u>136</u>
<u>SOUTHALL</u>	<u>2</u>	<u>1</u>	<u>15</u>

PASS RECEIVING	No. Rec'd	Net Yards	For TD
<u>CHESHIRE</u>	<u>4</u>	<u>50</u>	<u>1</u>
<u>PITTARD</u>	<u>2</u>	<u>20</u>	<u>-</u>
<u>BOVENZI</u>	<u>2</u>	<u>35</u>	<u>-</u>

FINAL INDIVIDUAL FOOTBALL STATISTICS

FSU

RUSHING

Player	Att.	Gain	Loss	Net
GIARDINO	10	25	5	20
MANKINS	9	25	1	24
SPOONER	15	35	10	25
PRITCHETT	3	12	-	12

PASSING

Player	Att.	Compl.	Intc.	Yds.
PRITCHETT	28	10	10	160
GIARDINO	1	-	1	-

PASS RECEIVING

Player	No.	Yds.	TD
GIARDINO	2	25	-
WETHERELL	2	32	1
J JONES	3	33	-
REVELL	2	24	-
MANKINS	1	10	-

PUNTING

Player	No.	Avg.
HOSACK	11	40.9

KICKOFF RETURNS

Player	No.	Yds.
HEAD	-	-
MOREMAN	1	30
GIARDINO	1	4

PUNT RETURNS

Player	No.	Yds.
BIBERT	3	9
CAMPBELL	2	29

PASS INTERC.

Player	No.	Yds.
CAMPBELL	1	12
BIBERT	1	-

BAYLOR

RUSHING

Player	Att.	Gain	Loss	Net
DEBEE	12	27	11	16
HAYES	10	55	1	54
N. MARSHALL	9	37	1	36
R.M. MARSHALL	6	18	9	9
SOUTHALL	1	-	14	-14

PASSING

Player	Att.	Compl.	Intc.	Yds.
R. MARSHALL	31	11	2	136
SOUTHALL	2	1	-	15

PASS RECEIVING

Player	No.	Yds.	TD
CHESHIRE	4	50	1
PITTARD	2	20	-
BOVENZI	2	35	-
LANE	2	19	-
WALKER	1	11	-
GREEN	1	10	-

PUNTING

Player	No.	Avg.
HEAD	12	35.1

KICKOFF RETURNS

Player	No.	Yds.
HAYES	2	28
CHESHIRE	1	14

PUNT RETURNS

Player	No.	Yds.
CHESHIRE	5	25
J JONES	1	15

PASS INTERC.

Player	No.	Yds.
W. H. HAN	1	1
ANDERSON	1	-

FSU vs. BAYLOR U Oct 2, 1965

FINAL TEAM FOOTBALL STATISTICS

	FSU	BAYLOR
First Downs Rushing	1	7
First Downs Passing	7	5
First Downs by Penalties	0	3
TOTAL FIRST DOWNS	8	15
Number Attempts Rushing	35	44
Yards Gained Rushing	105	182
Yards Lost Rushing	16	36
NET YARDS GAINED RUSHING	89	146
Number Passes Attempted	29	33
Number Passes Completed	10	12
Number Passes Had Intercepted	2	2
NET YARDS GAINED PASSING	160	151
Number Plays Rushing and Passing	64	77
TOTAL OFFENSE YARDAGE	249	297
Number Opponents Passes Intercepted	2	2
NET YARDS INTERCEPTIONS RETURNED	12	1
Number Times Punted	11	12
Number Punts Had Blocked	—	—
PUNTING AVERAGE, YARDS	40.8 — 449	35.1 — 421
Number Punts Returned	5	6
NET YARDS PUNTS RETURNED	38	40
Number Kickoffs Returned	2	3
NET YARDS KICKOFFS RETURNED	34	42
Number Times Penalized	3	8
TOTAL YARDS PENALIZED	35	106
Number Times Fumbled	2	3
NUMBER OWN FUMBLES LOST	1	2

Scoring: FSU — Roberts, 38 yd FG; WETHERILL, 59 yd Pass from Pritchett; Baylor — CHESHIRE, 51 yd Pass from Marshall; PURVIS, PAT K.
 Attendance: 28,900 Weather: Cool & Cloudy

QUOTES FROM FSU COACH BILL PETERSON

"We've got to have more confidence in our passing. We're not throwing enough to our wide receivers. ~~xxxx~~ Think that the long pass which won the game will give our passer and receivers in their ability and in our passing game.

"Jim Mankins made a tremendous block to break Wetherell loose in the end zone on our touchdown.

"The defense ~~xx~~ played a tremendous game. Our kids say that Baylor had probably the best offense we've ever faced.

They gave us lots of problems and we expected them to score at least once. And again our defense did a good job in to ping them;

I'm very sorry to see a fine player like Terry Southall get injured. It was a bad ~~xx~~ break for Baylor, but didn't change our ~~xxxx~~ defensive plans. It's one of those unfortunate things that happen.

The Scoring play was set up by the two long ~~xx~~ passes that were missed earlier in the ~~xxx~~ game. We noticed the man on Wetherell ~~fx~~ dropping off, and we thought they play would go for yardage, but never expected a touchdown. Mankins block did it.

"Jack Shinholser and Maury Bibent were outstanding on defense. Bibent was all over his man all night and probably ~~xxx~~ played his best game at FSU.

"Our punt coverage was great, in fact our offensive team did one of the best jobs in this department that I have ever seen.

WE ~~xxxx~~ changed the way we were blocking in the second half to give the quarterback more protection.

xx

Baylor dressing room dub king, baylor

From Terry Southall on the play on which he was injured:

"I faded back, and they had the blitz on. One Florida State player grabbed me high. I tried to spin away, and my left foot ~~from~~ slipped from under me. 'Bout that time, another man hit me and I went down. I ~~thought~~ thought I had just turned my ankle. But when they turned me over, I knew it was more serious."

I'm ~~hoping~~ hoping it's just one of those hairline fractures and I'll be back in there in 2 or 3 weeks. "

Coach John Bridgers feared, "Terry's probably out for the remainder of this season. " Trainer Sam Ketchum said, "Maybe 4 to 6 weeks, but we won't know until we reach Waco and Dr. Bud Trippet has x-rayed it and looked at the pictures."

Harlan Lane suffered a similar ankle injury and it, too, ~~will be~~ was to be x-rayed upon the Bears' arrival in Waco Sunday morning.

"Our defense was just great again, I was really proud of them for the entire game. The third quarter was almost over before they allowed a first down in the second half. Ortiz moved in there well....Anderson and the others again made some big plays.....penalties just killed us on offense. Florida State has a good, hard-hitting football team.

"The difference in this football game? That's simple, their field goal was good by a few inches...our field goal attempt that would have won it was ~~narrow~~ wide by a few inches.

End Willie Walker received a bruised thigh, and halfback Phil Trice suffered a ham-string muscle.

The Baylor players thought the heat was more enervating than in their games with Auburn(afternoon) and Washington(night) but none ~~mentioned~~ offered this as a n alibi.

Baylor's defensive line has now yielded only one touchdown in three games...against Washington. Auburn, Washington and tonight Florida State scored on the Bears on long pass plays.

###