

SUMMARY OF FOOTBALL GAME STATISTICS — Home Team

Home Team FLA. STATE UNIV. First Downs: (Rush) 7 (Pass) 9 (Pen.) 0 Total 16 Penalties Against: (No.) 6 (Yards) 60 Own Fumbles: (No.) 1 (Lost) 0

(Don't Use) NCAB CODE	PLAYER	RUSHING				FORWARD PASSING					TOTAL OFFENSE		RECEIVING			INT. RETURNS		PUNTING			PUNT RETURNS		K.O. RETURNS		SCORING								
		Times Carried	Yards Gain	Yards Loss	Net Gain	No. Att.	No. Comp.	Had Int.	Net Gain	Scoring		Total Plays	Net Gain	No. Caught	Yards Gain	TD's	No. Inter.	Yards Return	Times Kicked	Yards Kicked	Blkd.	Number Returns	Yards Return	Number Returns	Yards Return	Touch-downs	X Pts.	Kick	Other	X Pts.	Field	Goals	Points
										TD's	Conv.																Att.	Made	Att.	Made	Att.	Made	
	DRITCHETT	A 6	53	8	45	B 18	10	0	119	1		C 24	164	D			E		F			G		H		S 1							6
	SPOONER	A 11	42	1	41	B				0		C 11	41	D			E		F			G		H		S 1						6	
	MANKINS	A 9	31	-	31	B						C 9	31	D 1	7	0	E		F			G		H		S							
	MOREMAN	A 11	32	8	24	B						C 11	24	D			E		F			G		H 1	24	S							
	GIARDINO	A 6	10	1	9	B				0		C 6	9	D			E		F			G		H		S 1						6	
	HAMMOND	A 1	3	-	3	B 6	2	0	44			C 7	47	D			E		F			G		H		S							
	GERO	A				B 1	1	0	17			C 1	17	D			E		F			G		H		S			1	-		0	
	WETHERELL	A				B						C		D 4	32	0	E		F			G		H		S							
	WEITSTEIN	A				B				0		C		D 3	67	1	E		F			G		H		S 1						6	
	FENNER	A				B						C		D 2	44	0	E		F			G		H		S							
	BLANKENSHIP	A				B						C		D 2	23	0	E		F			G		H		S							
	J. JONES	A				B						C		D 1	7	0	E		F			G		H		S							
	HOSACK	A				B						C		D			E		F 6	266	-	G		H		S							
	BIBENT	A				B						C		D			E		F			G 2	17	H		S							
	CAMPBELL	A				B				0		C		D			E		F			G 1	70	H		S 1						6	
	ROBERTS	A				B						C		D			E		F			G		H		S	4	2			3	1	5
		A				B						C		D			E		F			G		H		S							
		A				B						C		D			E		F			G		H		S							
		A				B						C		D			E		F			G		H		S							
		A				B						C		D			E		F			G		H		S							
	TEAM TOTALS	A 44	171	18	153	B 25	13	0	180	1	0	C 69	333	D 13	180	1	E 0	0	F 6	266	0	G 3	87	H 1	24	S 5	4	2	1	0	3	1	35

Opponents WAKE FOREST First Downs: (Rush) 3 (Pass) 1 (Pen.) 1 Total 5 Penalties Against: (No.) 2 (Yards) 7 Own Fumbles: (No.) 2 (Lost) 1

Enter Here Team Totals From Visiting Team Summary	RUSHING				FORWARD PASSING					TOTAL OFFENSE		RECEIVING			INT. RETURNS		PUNTING			PUNT RETURNS		K.O. RETURNS		SCORING								
	Times Carried	Yards Gain	Yards Loss	Net Gain	No. Att.	No. Comp.	Had Int.	Net Gain	Scoring		Total Plays	Net Gain	No. Caught	Yards Gain	TD's	No. Inter.	Yards Return	Times Kicked	Yards Kicked	Blkd.	Number Returns	Yards Return	Number Returns	Yards Return	Touch- downs	X Pts. Kick		Other X Pts.		Field Goals		Points
									TD's	Conv.																Att.	Made	Att.	Made	Att.	Made	
VISITING TEAM TOTALS	A 38	111	38	73	B 15	4	0	26	0	0	C 53	99	D 4	26	0	E 0	0	F 11	381	0	G 1	2	H 6	110	S 0	0	0	0	0	0	0	0

Date of Game Nov 6, 1965 Where Played Tallahassee, Fla Authenticated by William Ruff and _____

ADDITIONAL STATISTICS

Official Attendance	25,600	Score by Quarters:	1st	2nd	3rd	4th	Total
Weather Conditions	COOL CLOUDY	FSU	0	3	13	19	35
		WAKE FOR	0	0	0	0	0

PRINCIPAL INDIVIDUAL PLAYS

List **all** scoring plays; also non-scoring plays (including punts) gaining 50 yards or more, and all **missed** field goal attempts.

Under "type of play" indicate rush, pass, int. runback, punt runback, kickoff runback, punt or field goal. List tries-for-points as P.A.T. kick, P.A.T. rush or P.A.T. pass.

On pass play, give passer first, then receiver, and combined yardage of pass and run. Measure runbacks from goal line, if started in end zone. Measure field goal attempts from point of kick. All other plays are measured from line of scrimmage.

Type of Play	Player or Players	Team	Yards	Scored?
F. G.	ROBERTS	FSU	30	YES
RUN	PRITCHETT	FSU	10	YES
PASS	PRITCHETT TO WEBSTEIN	FSU	40	YES
PAT KICK	ROBERTS	FSU	—	YES
RUN	SPOONER	FSU	1	YES
RUN	GIARDINO	FSU	1	YES
PUNT RUNBACK	CAMPBELL	FSU	70	YES
PAT KICK	ROBERTS	FSU	—	YES
PUNT	HOSACK	FSU	50	NO
PUNT	HOSACK	FSU	51	NO
F. G.	ROBERTS	FSU	46	NO
F. G.	ROBERTS	FSU	49	NO

CONDENSED RULES FOR RECORDING FOOTBALL STATISTICS*

(Originated by the N.C.A.A. Football Rules Committee's Sub-committee on Football Statistics)

SECTION 1 — FIRST DOWNS.

A first down shall be recorded whenever the yardsticks are ordered forward by the officials, and when a touchdown is scored from scrimmage (by rushing or passing) within a series of downs starting 10 yards or more from the goal line. A first down is **not** recorded on a touchdown runback, regardless of the distance of the scoring run.

SECTION 2 — RUSHING.

Article 1: All offensive running plays are to be classified as rushing plays, **not** as "plays from scrimmage," since any play begun with a snapback from center actually is a play from scrimmage.

Article 2: Rushing yardage is measured from the line of scrimmage to the point where the ball is declared dead, or is recovered by opponents in the case of a fumble.

Article 3: The rushing total is a **net** figure. All rushing losses must be recorded so as to account for the net figure.

Article 4: All gains on lateral passes which originated or grew out of a rushing play are included in rushing yardage. (See Article 1 of Section 4.)

SECTION 3 — FORWARD PASSING.

Article 1: Forward passing gains or losses are measured from the scrimmage line to the point where the ball is declared dead (or is recovered by opponents in the case of a fumble), so as to include both length of pass and running advance after completion. All yards gained or lost on each completed pass play are credited to **both** the passer and the receiver.

Article 2: Loss from a completed forward pass which did not advance the ball to the scrimmage line is a yardage charge against passing gain.

Article 3: Any loss by a player apparently intending to pass, but thrown behind the line of scrimmage, is recorded as a **loss by rushing**. He is **not** a passer until he has thrown the ball, and he retains at all times the option of running.

Article 4: Interception returns are measured from the point of interception to the point where the ball is declared dead (or is recovered by opponents in the case of a fumble).

Article 5: There is **no** pass completed by penalty. A gain through interference on a passing play is a penalty against the defending team. The passer is **not** charged with a pass attempt, nor credited with a pass completed or yards gained; nor is the intended receiver (or the player interfered with) credited with a pass caught. The passing team

is credited only with a first down by penalty. The defensive (offending) team is charged with a penalty, and the distance from the line of scrimmage to the spot of the penalty under "yards penalized."

Article 6: The forward passer is charged with a forward pass attempt when a forward pass is ruled intentionally grounded.

SECTION 4 — LATERAL PASSING.

Article 1: A lateral pass is always a component part of the ultimate play, whether it precedes or follows that play, since the lateral is merely an extension of the original or ultimate play, in effect.

(Approved Ruling — Player A receives a forward pass for a gain of 10 yards, then throws a lateral pass to Player B, who gains an additional 5 yards. Player A is credited with one pass caught and 10 yards under "receiving." Player B is credited with NO pass caught and with 5 yards under "receiving." Player who threw the forward pass is credited with 15 yards under "forward passing.")

(Approved Ruling — Player A catches punt and returns 10 yards before throwing a lateral pass to Player B, who returns another 5 yards. Player A is credited with one return and 10 yards under "punt returns." Player B is credited with NO return and with 5 yards under "punt returns.")

Article 2: Incomplete lateral passes are scored as fumbles, and yards lost are charged against the player who, in the scorer's opinion, was responsible for the failure of the pass.

Article 3: Intercepted lateral passes are scored as fumbles, the offensive team being charged with a fumble lost.

Article 4: The official scorer rules on whether a completed pass to a flanker or man-in-motion is a forward or a lateral pass. If the latter, the play is recorded under "rushing." If the pass is incomplete, the subsequent action of the officials reveals whether the pass was a forward or a lateral.

SECTION 5 — TOTAL OFFENSE.

Article 1: Total offense is the combined result of rushing and forward passing **only**, since these two are the only methods by which legal advance can be initiated while retaining possession of the ball.

Article 2: Total offense yardage is the total of **net** gain by rushing and net gain by forward passing. "Receiving" yards gained are **not** included in total offense.

WILD PASS FROM CENTER.

Any loss resulting from an **obvious** wild pass from center is charged to "center pass," and not to any individual player.

(Continued on back of Form 347-B)

*See the OFFICIAL FOOTBALL STATISTICIANS' MANUAL for complete rulings and interpretations.

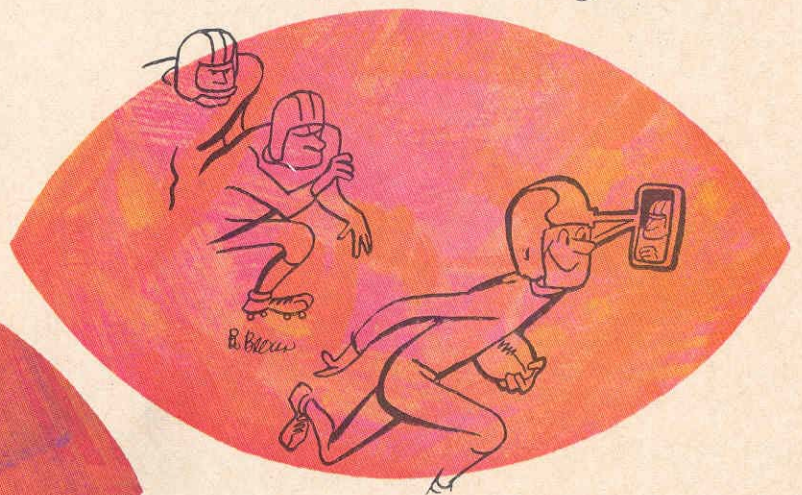
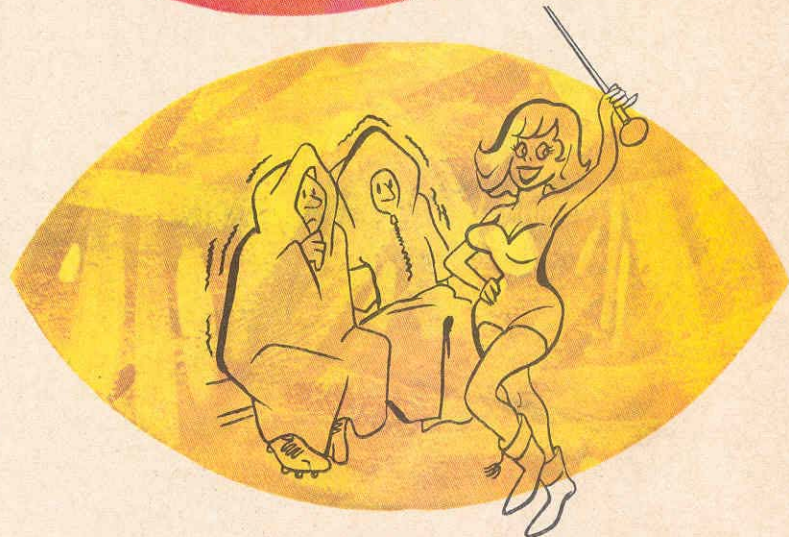
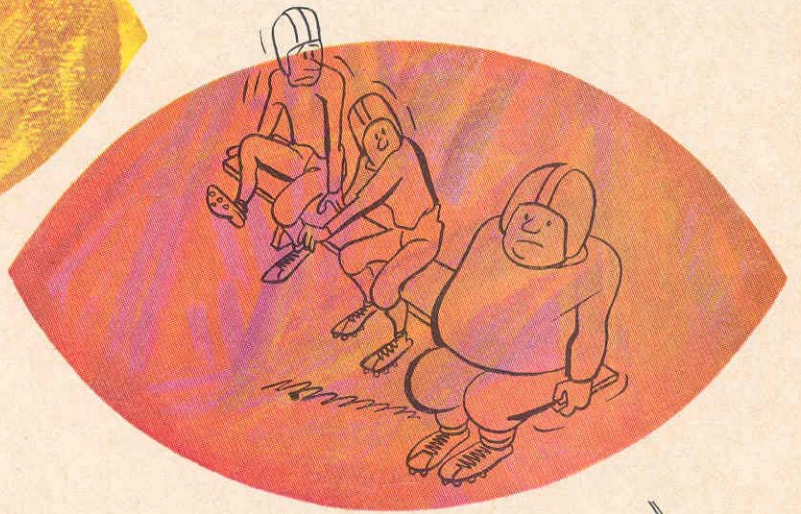
SUMMARY OF FOOTBALL GAME STATISTICS — Visiting Team

Visiting Team WAKE FOREST First Downs: (Rush) 3 (Pass) 1 (Pen.) 1 Total 5 Penalties Against: (No.) 2 (Yards) 7 Own Fumbles: (No.) 2 (Lost) 1

(Don't Use) NCAB CODE	PLAYER	RUSHING				FORWARD PASSING					TOTAL OFFENSE		RECEIVING			INT. RETURNS		PUNTING			PUNT RETURNS		K.O. RETURNS		SCORING								
		Times Carried	Yards Gain	Yards Loss	Net Gain	No. Att.	No. Comp.	Had Int.	Net Gain	Scoring TD's Conv.	Total Plays	Net Gain	No. Caught	Yards Gain	TD's	No. Inter.	Yards Return	Times Kicked	Yards Kicked	Blkd.	Number Returns	Yards Return	Number Returns	Yards Return	Touch- downs	X Pts. Att.	Kick Made	Other Att.	X Pts. Made	Field Att.	Goals Made	Points	
	KARAZO	A 3	19	1	18	B						C 3	18	D			E		F			G		H		S							
	HECK	A 7	18	0	18	B						C 7	18	D			E		F			G		H		S							
	HAUSWALD	A 8	29	12	17	B 6	1	0	6	0	0	C 14	23	D			E		F			G		H		S							
	GOLIGHTLY	A 6	13	2	11	B						C 6	11	D 1	3	0	E		F			G 1	2	H		S							
	WILSON	A 11	22	13	9	B 9	3	0	20	0	0	C 20	29	D			E		F			G		H		S							
	SMITH	A 2	7	0	7	B						C 2	7	D			E		F			G		H		S							
	DAVIS	A 1	3	0	3	B						C 1	3	D			E		F			G		H		S							
	HENRY	A				B						C		D 2	17	0	E		F			G		H		S							
	SLONE	A				B						C		D 1	6	0	E		F			G		H		S							
	SHILLINGHAM	A				B						C		D			E		F 11	38	0	G		H		S							
	DIXON	A				B						C		D			E		F			G		H 6	11	S							
		A				B						C		D			E		F			G		H		S							
		A				B						C		D			E		F			G		H		S							
		A				B						C		D			E		F			G		H		S							
		A				B						C		D			E		F			G		H		S							
		A				B						C		D			E		F			G		H		S							
		A				B						C		D			E		F			G		H		S							
		A				B						C		D			E		F			G		H		S							
		A				B						C		D			E		F			G		H		S							
		A				B						C		D			E		F			G		H		S							
		A				B						C		D			E		F			G		H		S							
		A				B						C		D			E		F			G		H		S							
		A				B						C		D			E		F			G		H		S							
		A				B						C		D			E		F			G		H		S							
		A				B						C		D			E		F			G		H		S							
		A				B						C		D			E		F			G		H		S							
		A				B						C		D			E		F			G		H		S							
		A				B						C		D			E		F			G		H		S							
		A				B						C		D			E		F			G		H		S							
		A				B						C		D			E		F			G		H		S							
		A				B						C		D			E		F			G		H		S							
		A				B						C		D			E		F			G		H		S							
		A				B						C		D			E		F			G		H		S							
		A				B						C		D			E		F			G		H		S							
		A				B						C		D			E		F			G		H		S							
		A				B						C		D			E		F			G		H		S							
		A				B						C		D			E		F			G		H		S							
		A				B						C		D			E		F			G		H		S							
		A				B						C		D			E		F			G		H		S							
		A				B						C		D			E		F			G		H		S							
		A				B						C		D			E		F			G		H		S							
		A				B						C		D			E		F			G		H		S							
		A				B						C		D			E		F			G		H		S							
		A				B						C		D			E		F			G		H		S							
		A				B						C		D			E		F			G		H		S							
		A				B						C		D			E		F			G		H		S							
		A				B						C		D			E		F			G		H		S							
		A				B						C		D			E		F			G		H		S							
		A				B						C		D			E		F			G		H		S							
		A				B						C		D			E		F			G		H		S							
		A				B						C		D			E		F			G		H		S							
		A				B						C		D			E		F			G		H		S							
		A				B						C		D			E		F			G		H		S							
		A				B						C		D			E		F			G		H		S							
		A				B						C		D			E		F			G		H		S							
		A				B						C		D			E		F			G		H		S							
		A				B						C		D			E		F			G		H		S							
		A				B						C		D			E		F			G		H		S							
		A				B						C		D			E		F			G		H		S							
		A				B						C		D			E		F			G		H		S							
		A				B						C		D			E		F			G		H		S							
		A				B						C		D			E		F			G		H		S							
		A				B																											

OFFICIAL PROGRAM

50c



FLORIDA STATE
VS
WAKE FOREST
HOMECOMING, 1965

DOAK S. CAMPBELL STADIUM • TALLAHASSEE, FLORIDA • NOVEMBER 6, 1965

OFFICIAL WATCH FOR THIS GAME

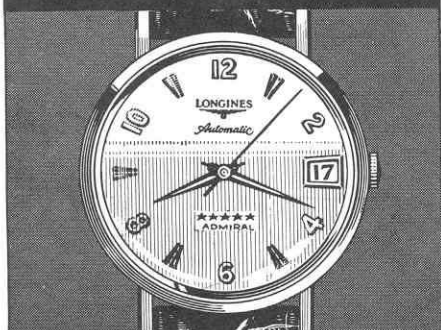


LONGINES THE WORLD'S MOST HONORED WATCH

10 WORLD'S FAIR
GRAND PRIZES
28 GOLD MEDALS



Longines watches are
recognized as **OFFICIAL**
for timing world
championships and Olympic
sports in all fields
throughout the world.



Longines 5-Star Admiral Automatic with Calendar,
All-Proof®, sweep-second, 14K gold strap-\$185.00

The Longines Credo

Every Longines watch,
whatever its type, for whatever
its use, today, as for almost
a century, is manufactured to
be the finest of its kind and
worthy in every respect to be called
The World's Most Honored Watch

LONGINES-WITTMANER WATCH CO.

MONTREAL • NEW YORK • GENEVA
Maker of Watches of the Highest Character Since 1867

Today's Game

By **BILL BUNKER**

Sports Information Director
Florida State University



Winston-Salem, N.C. was designated an All America City in 1964. Among other things it is the home of Wake Forest College, and the resurgent Demon Deacons of Coach Bill Tate.

The stature of Wake Forest today is vastly different than that of the 1963 Deacons, the last team to face Florida State. The Seminoles handed Wake Forest a 35-0 defeat, loss number 14 in an 18 game losing streak.

University of Illinois graduate Tate took over in 1964, along with Athletic Director Gene Hooks, and the Deacon image immediately began to rise. Tate brought home a 5-5 season last year, was in the running for the Atlantic Coast Conference title until the season's final week, and received a unanimous vote as ACC "Coach of the Year."

So far this season, Wake Forest has won two games while losing five. The record is an inaccurate yardstick by which to measure the ability of the team facing Florida State this afternoon. The two Deacon victories were big ones—Vanderbilt and North Carolina, and Tate's personnel is better than several teams the Seminoles have played this season.

Wake Forest can be expected to show quite a few offensive formations today. The Deacons have two quarterbacks who can throw, and a pair of impressive receivers in end Ken Henry and halfback Joe Carazo. You can expect to see a disciplined, well-coached football team.

Florida State and Wake Forest are old friends, although the two schools most heated rivalry has been on the baseball diamond rather than the football field. Year in and year out you can figure FSU and Wake Forest to meet in Gastonia, N.C. to decide which team will represent District III in the College World Series.

This will be the sixth football meeting of the two schools. Florida State has won three, lost one and one game ended in a tie.

Wake Forest has brought some great football players to Campbell Stadium since the series began in 1956. That first meeting was Homecoming nine years ago. Those of you who were there can never forget the Deacons' All America fullback Bill Barnes who scored both Wake Forest touchdowns and gained 83 yards in the mud to tie the Seminoles 14-14.

Another rainy hair-raiser came in 1958 when FSU quarterback Joe Majors took a safety with 34 seconds left to preserve a 27-24 victory.

Lanky Norman Snead's passes brought the Deacons back from a 21-10 halftime disadvantage to make it close in that one.

And in 1963, fullback Brian Piccolo appeared for Wake Forest. Although FSU won easily, Piccolo showed the form that was to gain him national rushing and scoring honors in 1964.

Wake Forest has always brought a good football team to Tallahassee for Homecoming, and today's should be no exception.

Meanwhile, Coach Bill Peterson and the Seminoles, along with the entire athletic department of Florida State University, welcome alumni, students, friends and fans to Homecoming, 1965.

FLORIDA STATE'S ATHLETIC COMMITTEE



Mode L. Stone,
Chairman
Dean, School of
Education



Coyle E. Moore
Dean, School of
Social Welfare



Elston Roady
Professor,
Government



Thomas Wright
Assoc. Professor,
Music



Claude Flory
Professor, English



Robert Earnest
Professor, Business



Mary Alexander
Assoc. Professor,
Physical Education
and Recreation



J. M. Plant
Assoc. Professor,
Engineering Science

GO-GO SEMINOLES

CHICK-N-TREAT

TAKE OUT BOXES

Located Two Blocks
From Stadium

1342 Jackson Bluff Rd.—224-4425

MIDYETTE-MOOR

Insurance Agency

"Ask Those We Serve"

Complete Insurance and Bond Service

PHONE 222-3456



MIDYETTE-MOOR BUILDING
TALLAHASSEE, FLORIDA

SAYS

SCALP 'EM SEMINOLES!



Payne Midyette
Frank Moor
Ed Clark
Winslow Sullivan
Bob Dickinson
Paul Lewis
Payne Midyette, Jr.

Bill Moor
Bill Franklin
Glenn Sears
Dick Wall
Don Northcut
Rex Sikes
Mike Lee

BENNETT'S DRUG STORE

- Prescriptions
- Cameras
- Sundries
- Gifts
- Fountain
- Cafe
- Cosmetics
- Drugs

MEET ME AT BENNETT'S

BEFORE AND AFTER THE GAME!

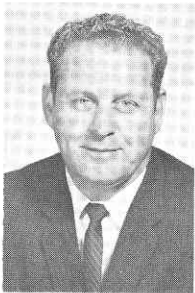
Corner Monroe and College Streets

Phone 222-8980 — 222-4450

DON JAMES
First Assistant
Defensive Chief



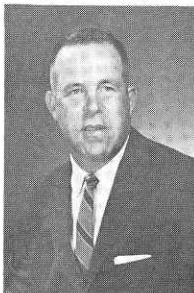
BOB HARBISON
Defensive Line



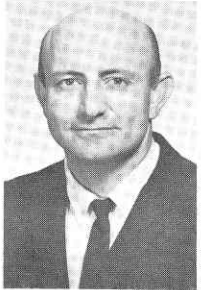
NEIL SCHMIDT
Defensive Ends,
Linebackers



KEN MacLEAN
Head Recruiter



BILL PETERSON
Head Football Coach



BILL CRUTCHFIELD
Offensive Chief



DON POWELL
Offensive Line



BOBBY BOWDEN
Receivers



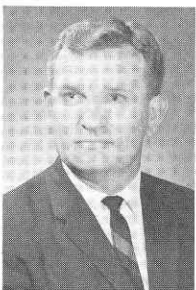
BILL PROCTOR
Freshman

THE SEMINOLE FOOTBALL FAMILY

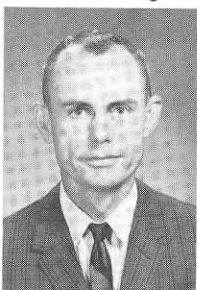
RONALD MELTON
Business
Manager



JEFF SAVAGE
Academic
Advisor



CLAUDE THIGPEN
Ticket Manager



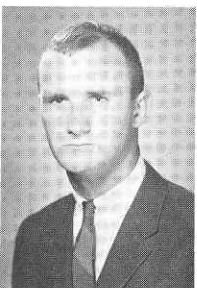
BILL BUNKER
Sports
Information



DR. R. P. JOHNSON
Team Physician



DON FAULS
Head Trainer



PHIL CALLICUTT
Trainer

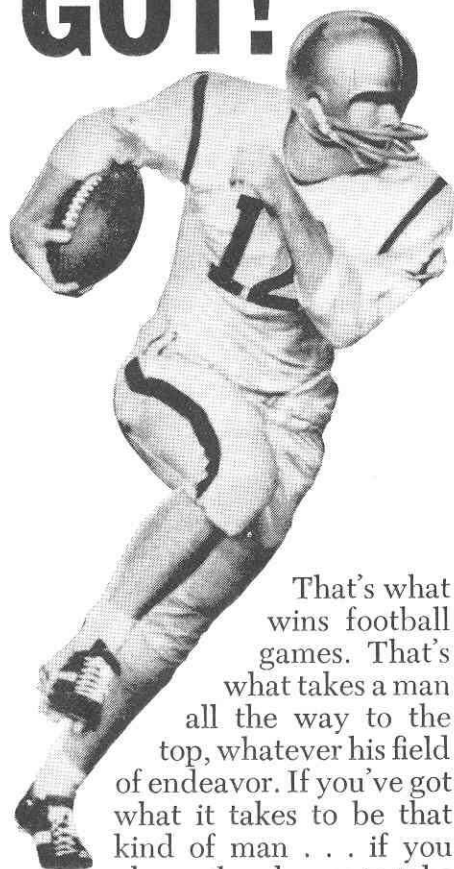


TILLMAN DIXON
Equipment
Manager

VAUGHN MANCHA
Director of Athletics



GIVE IT EVERY- THING YOU'VE GOT!



That's what wins football games. That's what takes a man all the way to the top, whatever his field of endeavor. If you've got what it takes to be that kind of man . . . if you have the chance to take ROTC, make what you've got count. Go for an Army commission. That way, come commencement, you'll have two good things going for you: your college degree, and the gold bars that mark you a leader of men . . . tested, trained, trusted.

GET IN— STAY IN ARMY ROTC!

TODAY'S TEAMS

A Statistical Comparison

FLORIDA STATE Results (3-3)

3	TCU	7
9	Baylor	7
24	Kentucky	26
10	Georgia	3
0	Alabama	21
7	VPI	6
53		70

WAKE FOREST Results (2-5)

3	VPI	12
11	N. C. State	13
7	Vanderbilt	0
7	Maryland	10
7	S. Carolina	38
12	N. Carolina	10
13	Clemson	26
60		109

TEAM STATISTICS

81	First Downs	94
769	Yards Rushing	803
709	Yards Passing	843
154	Passes Attempted	158
64	Passes Completed	73
11	Passes Had Intercepted	11
4	Fumbles Lost	5
39	Punts	55
38.3	Punting Average	31.7

INDIVIDUAL LEADERS

Rushing

Name	Att.	Yards	Avg.	Name	Att.	Yards	Avg.
Giardino	53	174	3.3	Heck	120	399	3.3
Mankins	42	170	4.0	Carazo	51	177	3.5
Pritchett	42	166	4.0	Golightly	29	120	4.1
Moreman	24	164	6.8				

Passing

Name	Att.	Comp.	Yards	TD	Name	Att.	Comp.	Yards	TD
Pritchett	152	63	699	2	Hauswald	90	39	439	1
					Wilson	67	33	378	3

Pass Receiving

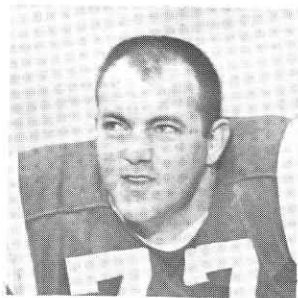
Name	Caught	Yards	TD	Name	Caught	Yards	TD
J. Jones	16	189	0	Carazo	27	286	0
Wetherell	10	143	1	Henry	25	301	2
Giardino	9	52	0	Kelly	7	58	1
Wettstein	8	116	1	Dixon	3	70	1

Punting

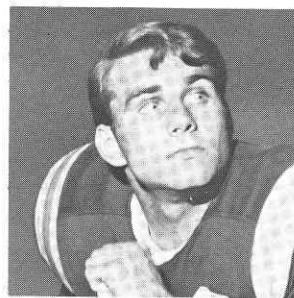
Name	No.	Avg.	Name	No.	Avg.
Hosack	39	38.3	Shillinglaw	33	34.0
			Wilson	19	32.8

Scoring

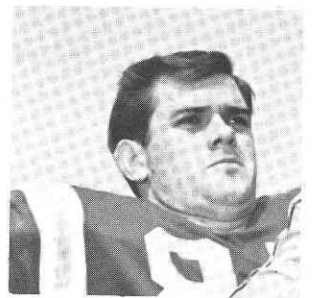
Name	TD	FG	PAT	TP	Name	TD	FG	PAT	TP
Roberts	0	4	5	17	McKinney	0	4	4	16
Wetherell	2	0	0	12	Kelly	2	0	0	12
Moreman	2	0	0	12	Henry	2	0	0	12



Bob Mangan

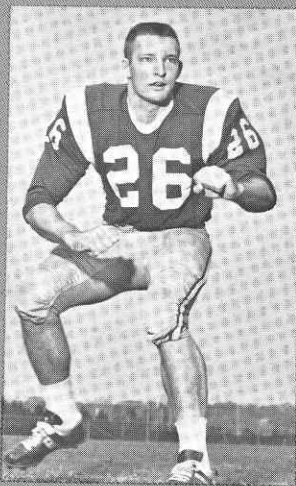


Joe Petko

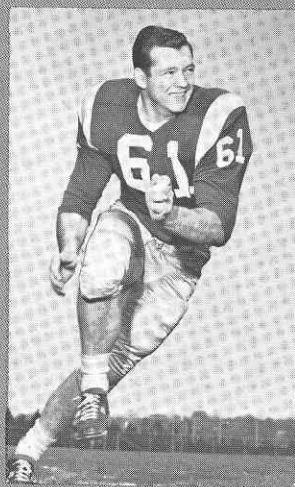


John Hosack

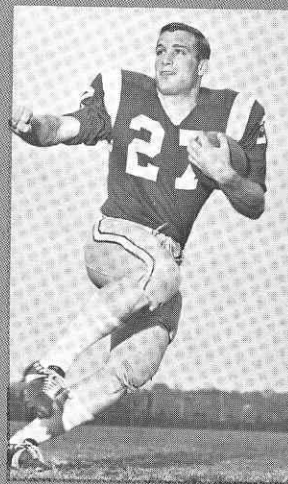
Introducing...the FLORIDA STATE UNIVERSITY 65 SEMINOLES



Bill Campbell



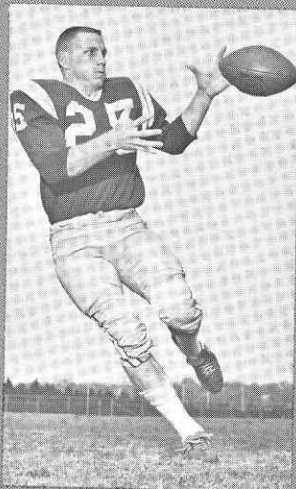
Jack Shinholser



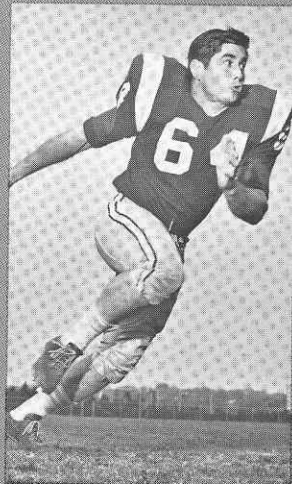
Phil Spooner



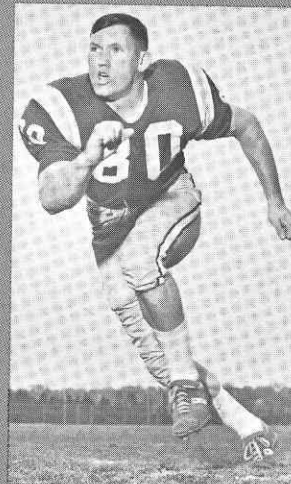
Elton Revell



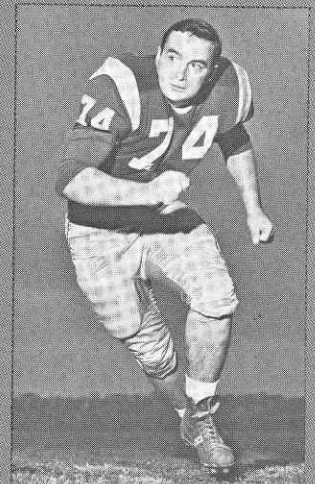
T. K. Wetherell



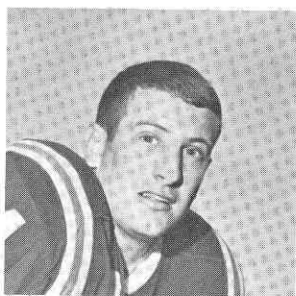
Dave Braggins



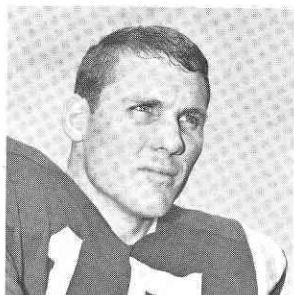
H. T. Waller



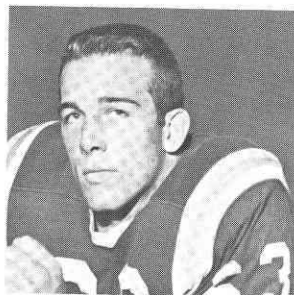
Jay Matthews



Jim Massey



Pat Conway



Bill McDowell

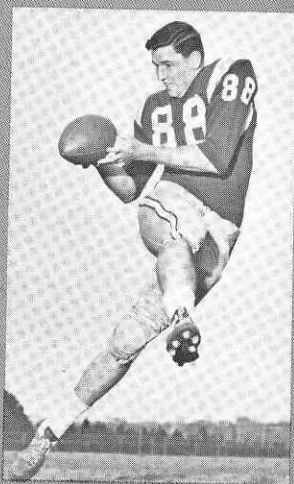


Thurston Taylor

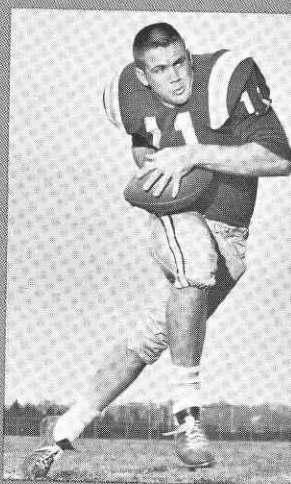
FLORIDA STATE UNIVERSITY 65 SEMINOLES



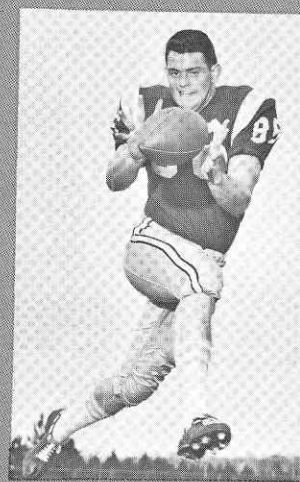
Joe Avezzano



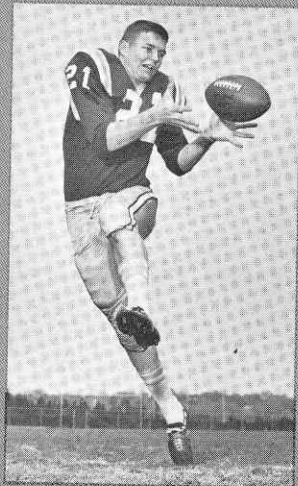
Stan Croley



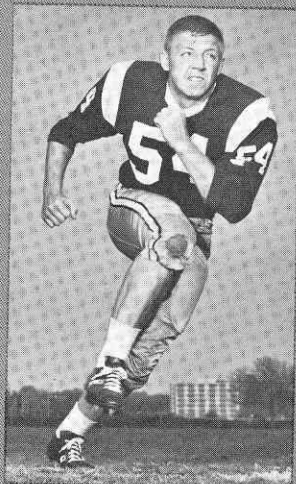
Kim Hammond



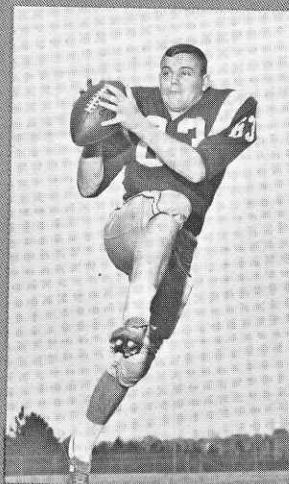
Buddy Blankenship



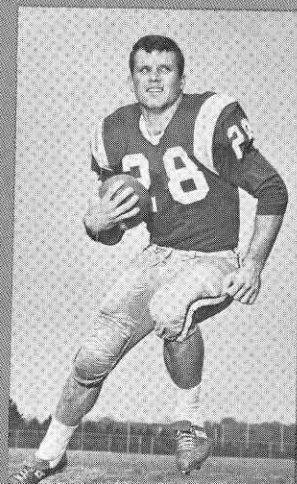
Bill Cox



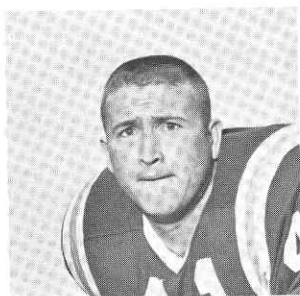
John Stephens



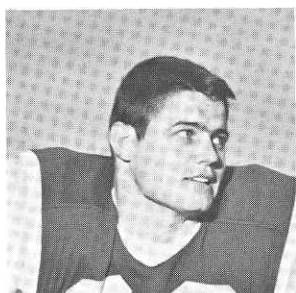
Jerry Jones



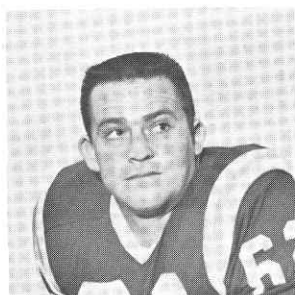
Bill Moreman



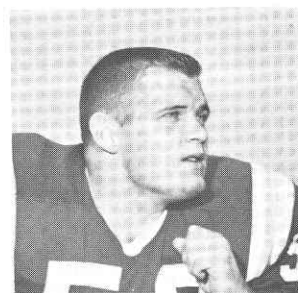
Bob Menendez



Edwin Pope

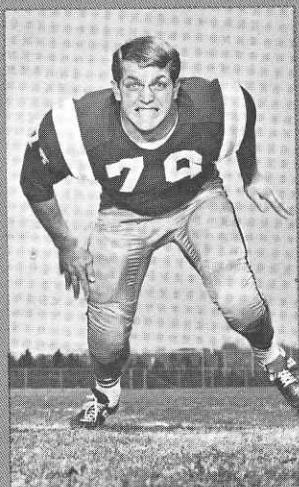


Howard Lurie

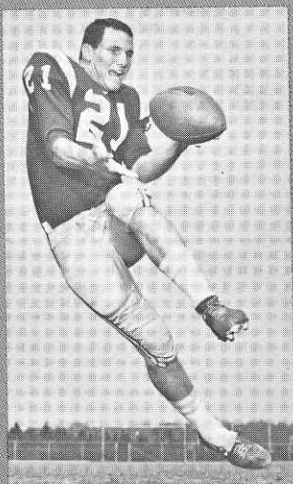


David Pitts

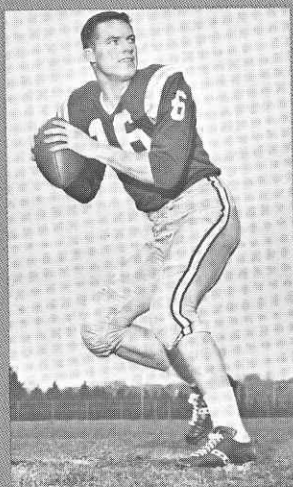
the FLORIDA STATE UNIV



Frank Pennie



Donovan Jones



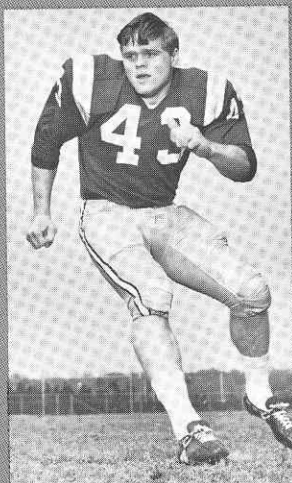
Ed Pritchett



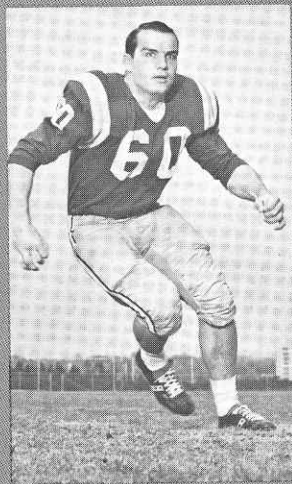
Bill Richardson



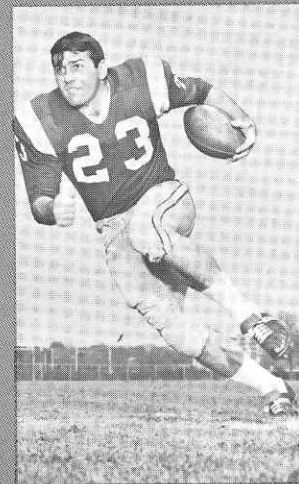
Joe Parrish



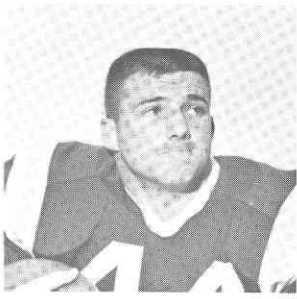
Howard Ehler



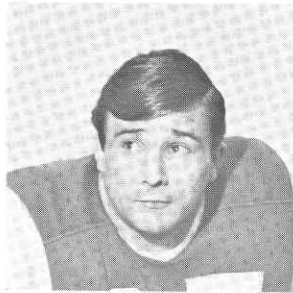
Larry Williamson



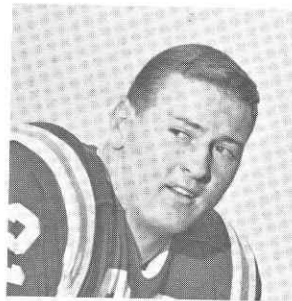
Wayne Giardino



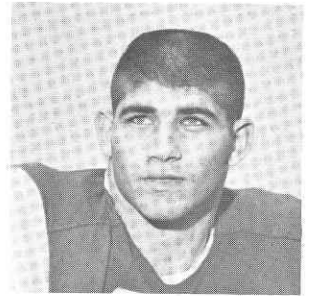
Jim Mankins



Terry Garvin



Wayne McDuffie

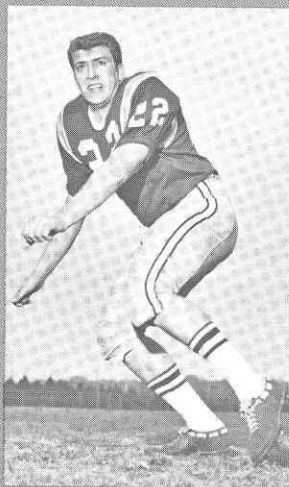


Mike Blatt

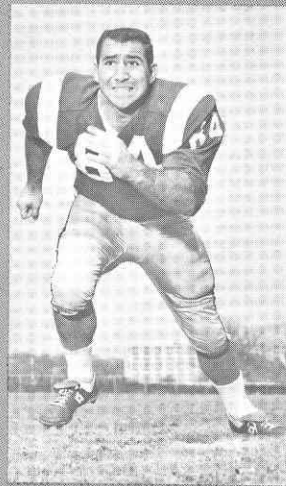
UNIVERSITY 1965 SEMINOLES



Charles Pennie



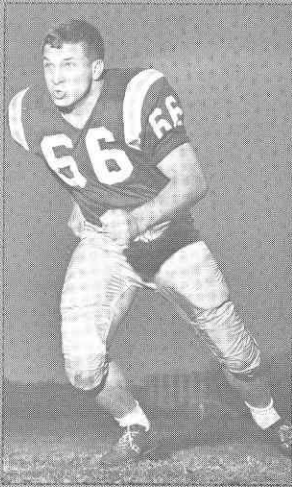
Maury Bibent



George D'Alessandro



Tony Gero



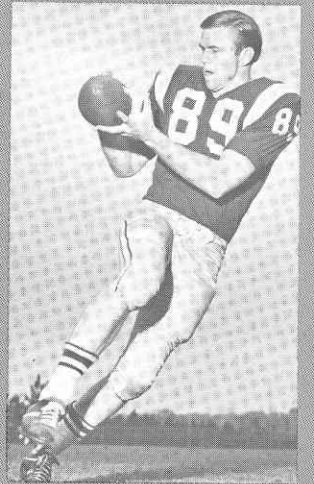
Carl McNeil



James Riser



Dave Hall



Max Wettstein

FLORIDA STATE UNIVERSITY VS WAKE FOREST COLLEGE November 6, 1965
Doak S. Campbell Stadium Tallahassee, Fla. Weather: Cloudy Wind: East 14 mph
Temp: 78

FSU CO Captains: D'Alessandro Wake Forest Co. Captains: Harper
Wettstein
McDowell
Spoonier

FSU won toss, will receive, Wake Forest will defend the south goal

McKinney kicks off for WF to Moreman who returns to 27, penalty on 27

FSU Ball

FSU 27 1-10 Spoonier gain 4
F31 2-6 Mankins thru line for 4
F35 3-1 Mankins into line lose 1
F35 4-1 Hozack kicks to Golightly on 20, snowed on 15 50 yd kick

WF Ball 12:54

W12 1-10 Heck off r. tackle, gain 5 McDowell
W18 2-5 Heck into line for 1 Parrish
W19 3-4 Wilson pass inc. to Carazo
W19 4-4 Shillinghof kicks to F38 fair catch 39 yd. kick

FSU Ball 11:38

F42 1-10 Prichett pass inc. to Wetherell
F42 2-10 Prichett pass to Wetherell comp. for 7
F49 3-3 Spoonier takes lateral gain 6
W45 1-10 Mankins into line for 2 Williams
W43 2-8 Penalty, offsides FSU
W48 2-13 Prichett pass to Spoonier inc.
W48 3-13 Prichett keeps, loses 8
F44 4-21 Hozack kicks to Golightly fair catch on W 17 39 yds.

WF Ball 8:44

W17 1-10 Golightly thru line for 3 Parrish
W20 2-7 Heck stopped at line no gain
W21 3-6 Carazzo thru tackle gain 6, measure First D.
W28 1-10 Wilson keeps, lose 1 Parrish
W27 2-11 Wilson keeps, loses 1 Shinholser
W25 3-12 Wilson pass inc. to Carazzo
W25 4-12 Shillinglaw kicks to Campbell out of bounds on 38 38 yd

FSU Ball 5:50

F37 1-10 Prichett pass inc. to Wetherell
F37 2-10 Pass to Wetherell in open, fell down 12 yds
F50 1-10 Mankins on hand off around end to 41 9 yds, measure 3" short
F41 2-1 Moreman thru line gain 2 First D.
W39 1-10 Prichett pass comp, Wettstein on 29, measure 1st. D.
W29 1-10 Spoonier thru line gain 5
W24 2-5 Penalty, too much time
W29 2-10 Prichett pass to Mankins complete to 23 gain 7 penalize 15 PF
W23 3-18 Prichett passes inc. to Moreman
W23 4-18 Hozack kicks to end zone 38 yds.

WF Ball 2:43

W20 1-10 Heck thru line for 2
W23 2-7 Golightly thru line for 4 Parrish
W27 3-3 Wilson keeps. Parrish, no gain
W27 4-3 Shillinghof kicks to Campbell, fair catch, penalty F
W42 1-10 Wilson keeps, stopped by Pennies, lose 1
W41 2-11 Wilson passes to Golightly, gain 3
Www 3-8 Wilson pass inc. McDowell :09
W44 4-8 Shillinghof ~~kicks~~ fumbles, recovers tackled on 34

End of Quarter

FSU 0 WFO

FSU VS Wake Forest Nov. 6, 1965

Second Quarter

FSU Ball

F34 1-10 Mankins around end gain 7
W27 2-3 Prichett pass to Wetherell comp. on 21 gain 6
W21 1-10 Spooner into line for 2
W19 2-8 Mankins into line for no gain
W19 3-8 Prichett pass comp. to Wetherell gain 8
W13 4-2 Roberts kicks field goal good

FSU 3 WF 0 12:11

FSU Roberts kicks off to Wake Forest Dixon on 2, returns to 25 24 yd ret.

FW Ball

W25 1-10 Golightly into line for 2 Pennie
W27 2-7 Wilson keeps for gain of 5
W33 3-2 Heck on hand off gain 1
W34 4-1 Shillinglaw kicks to 44 yds. Campbell recovers on 21

FSU Ball 10:02

F22 1-10 Prichett pass comp. to J. Joner gain 7
F29 2-3 Spooner into line lose 1
F28 3-4 Giardino around r. end gain 3
F31 4-1 Hozack kicks to WF Golightly, fumbles, recovers on 28 41 yds.

WF Ball 8:12

W28 1-10 Carazzo thru line gain 13 First d.
W41 1-10 Wilson pass comp. to Henry 8 yds
W49 2-2 Golightly into line Shiholser gain 1 Time out 6:41
W50 3-1 Wilson comp. to Henry gain 9 Ehler First D.
F41 1-10 Heck around end gain 4 Bibett
F37 2-6 Wilson pass inc. to Sloan Campbell
9 F37 3-6 Wilson pass inc. broken by Campbell
F37 4-7 Shillinglaw kicks to Bibett 29 kick 12 yds 4 ret.

FSU Ball

F29 1-10 Prichett keeps for gain of 1
F30 2-9 Prichett keeps, gain 2
F32 3-7 Moreman on hand off, lose 8
F24 4-15 Hozack kicks to Golightly, fumble recovered by Williamson 37 yd 1

FSU Ball 3:02

W31 1-10 Moreman gain 2 thru line
W29 2-8 Mankins into line for gain of 4
W24 3-3 Penalty FSU too much time 5
W29 3-8 Prich inc. to Wettstein
W29 4-8 Roberts field goal try is not good

WF Ball

1:10
W20 1-10 Wilson keeps into line for gain of 3 Shiholser
W23 2-7 Wilson keeps to 25 gain 2
W25 3-5 Wilson keeps again for gain of 4
W29 4-1 clock runs out, no play

Score: FSU 3 WF 0

FLASH FOOTBALL STATS

Quick Halftime and After Game Reports of Vital Team Statistics and Individual Leaders

HALFTIME

Circle One

FINAL

TEAM STATISTICS

	<u>FSU</u>	<u>WAKE FOREST</u>
First Downs	<u>5</u>	<u>4</u>
Rushing Yardage (Net)	<u>36</u>	<u>46</u>
Passing Yardage (Net)	<u>56</u>	<u>20</u>
Passes (Completions-Attempts)	<u>7 - 12</u>	<u>3 - 8</u>
Passes Intercepted by	<u>0</u>	<u>0</u>
Punts (Number-Average)	<u>5 - 43</u>	<u>4 - 33.3</u>
Fumbles Lost	<u>0</u>	<u>1</u>
Yards Penalized	<u>45</u>	<u>2</u>

INDIVIDUAL LEADERS

FLORIDA STATE

RUSHING	Att'd	Net Yards	Avg.
<u>HANKINS</u>	<u>7</u>	<u>26</u>	<u>3.7</u>
<u>SPOONER</u>	<u>5</u>	<u>16</u>	<u>3.2</u>
<u>GIARDINO</u>	<u>1</u>	<u>3</u>	<u>3.0</u>

PASSING	Att'd	Compl.	Had Int'd	Net Yards
<u>PRITCHETT</u>	<u>12</u>	<u>7</u>	<u>0</u>	<u>56</u>

PASS RECEIVING	No. Rec'd	Net Yards	For TD
<u>WETTERELL</u>	<u>4</u>	<u>32</u>	<u>0</u>
<u>WETTSTEIN</u>	<u>1</u>	<u>10</u>	
<u>J. JONES</u>	<u>1</u>	<u>7</u>	
<u>MANKINS</u>	<u>1</u>	<u>7</u>	

WAKE FOREST

RUSHING	Att'd	Net Yards	Avg.
<u>CARAZO</u>	<u>2</u>	<u>19</u>	<u>9.5</u>
<u>HECK</u>	<u>6</u>	<u>15</u>	<u>2.5</u>
<u>WILSON</u>	<u>8</u>	<u>12</u>	<u>1.5</u>

PASSING	Att'd	Compl.	Had Int'd	Net Yards
<u>Wilson</u>	<u>8</u>	<u>3</u>	<u>0</u>	<u>20</u>

PASS RECEIVING	No. Rec'd	Net Yards	For TD
<u>HENRY</u>	<u>2</u>	<u>17</u>	<u>0</u>
<u>GOLIGHTLY</u>	<u>1</u>	<u>3</u>	<u>0</u>

Third Quarter FSU VS Wake Forest Nov. 6, 1965 Attendance: 25,600

Roberts kicks off for FSU to Dixon who downs it in end zone.. 60 yd kick

WF Ball
W20 1-10 Carazo thru line lose 2 Parrish
W19 2-11 Wilson keeps, gain 5 McDowell
W24 3-6 Wilson pass inc. to Dixon
W24 4-6 Shillinglaw kicks to 50 yd. line 26 yds

FSU Ball 13:39

F50 1-10 Prichett pass inc. to Wetherell
F50 2-10 Prichett keeps, good blocking gain 37
W13 1-10 Spooner thru line for gain of 1
W12 2-9 Moreman thru tackle, gain 2 1
W10 3-8 Prichett keeps for TD 11:32 12 yd. run

FSU 9 WF 0

Roberts try for point is NG

FSU 9 WF 0 11:32

Roberts kicks off for FSU to Dixon on 4, returns 14

WF Ball 11:21

W18 1-10 Davis on hand off gain 3 McDowell
W21 2-7 Wilson keeps for gain of 2 D Alessandro, Pennie
W23 3-5 Davis on bzd pitch from Wilson loses 10
W13 4-15 Shillinglaw kicks to Bibett on 47

FSU Ball 9:18

F47 1-10 Prichett pass comp. pt Blankenship for 12
W36 1-10 Prichett pass to Blankenship inc.
W36 2-10 Giardino around r. end for gain 3
W39 3-7 Prichett keeps, gain 1 thru line
W32 4-6 Roberts attempt at goal is short

WF Ball 7:51 Hauswald

W20 1-10 ~~XXXXXX~~ pass comp to Carazo, penalty
W15 1-15 Hauswalds thru line for 2 D Alessandro, Pennie
W17 2-13 Hauswald keeps for no gain Pennie, Garvin
W16 3-14 Hauswald pass comp to Sloan, gain 6
W22 4-8 Shillinglaw kicks to Campbell on 47, no return 32 yds

FSU Ball

F46 1-10 Giardino thru line for 2
F48 2-8 Prichett pass comp. to Blankenship for 11 First D.
W41 1-10 Giardino thru line for 1
W40 2-9 Prichett pass inc. to Wetherell
W40 3-9 Prichett pass to Wettstein comp. for TD 40 yd. pass play

FSU 15 WF 0 4:14

Roberts try for point is good

FSU 16 WF 0

Roberts kicks off to Wake Forest on Dixon on WF 2, return to 16 14 ret. Ris

WF Ball 4:03

W16 1-10 Golightly thru line for 3 C Pennie
W19 2-7 Hauswald to Golightly inc.
W19 3-9 Hauswald pass to inc. Shinholser
W19 4-9 Shillinglaw kicks to FSU 45 29~~16~~ yds.

FSU Ball 2:50

W48 Moreman thru line for 6
W42 2-5 Moreman around end for gain of 4
W37 1-10 Moreman thru r. tackle for 2
W35 2-8 Hammond keeps, gain 3
W32 3-5 Hammond pass to Wettstein inc.
W32 4-5 Roberts try for field goal is fake Gero to Wettstein gain 17

W15 2-3 Moreman thru line for 7

end of quarter

FSU 16

WF 0

Fourth Quarter

FSU VS WF Nov 6, 1965

FSU Ball

W8 2-3 Moreman off l. tackle for 1
W7 3-2 Mankins thru line to 4 3 yds. First d.
W4 1-G Spooner gain 3
W1 2-G Spooner leaps over line for TD 13:21

FSU 22 WF 0

Roberts try for point is NG

FSU 22 WF 0

Roberts kicks off to Wake Forest on 7, Dixon returns 18 to 24 Ehler

WF Ball 13:12

W24 1-10 Hauswald keeps, lose 1 D Alessandro
W23 2-11 Hauswald pitch to Heck, gain 3
W26 3-8 Hauswald pass, keeps, no gain McNeil, D Alessandro
W25 4-9 Shillinglaw kicks to Bibett, returns to 48 40 yd kic

FSU Ball 11:25

F48 1-10 Moreman around l. enf, gain 2
F50 2-8 Hammond pass inc to Blankenship
F50 3-8 Hammond pass to Fenner, gain 9 First d.
W39 1-10 Spooner thru line for 4
W35 2-6 Hammond pass to Fenner inc. Penalty on FSU 15 illeg. rec.
W50 2-21 Hammond pass inc. to Taylor
W50 3-21 Hammond pass comp to. Fenner, 35 yd play First D. 8:56
W16 1-10 Spooner around end for 12, First D.
W4 1-G Giardino lose 1 thru line
W5 2-G Spooner thru line trips at 1 4 yds
W1 3-1 Giardino thru line for TD

FSU 28 WF 0 7:03

Roberts try for point is fake, no point

Roberts kicks off to Wake Forest Dixon on 3, returns 19 yds Roberts

WF Ball 6:52

W22 1-10 Golightly is stopped by Black, loss of 2
W20 2-12 Hauswald pass to Decker inc.
W20 3-12 Hauswald pass inc. to Dixon
W20 4-12 Shillinglaw kicks to FSU 38 dead 40 yd kick

FSU Ball 5:29

F38 1-10 Moreman thru line for 3
F41 2-7 Mreman thru line for 3
F44 3-4 Hammond pass inc. to Taylor
F44 4-4 Hozack kicks to WF 8, Golightly downed on 7 52 yd kick

WF Ball 4:53

W7 1-10 Hauswald thru line for no gain Waller
W7 2-10 Hauswald keeps, gain 24 Lurrie
W30 1-10 Hauswald keeps, gain 3, McNeil
W33 2-7 Hauswald thrown for loss of 9, McNeil 1:53
W24 3-16 Hauswald pass to Henry inc., dropped it.
W24 4-16 Shillinglaw kicks to Campbell on 30 returns 70, key block by Waller 26 yd. kick

FSU 34 WF 0 1:10

Roberts kick is good

FSU 35 WF 0

Roberts kicks off to Wake Forest on 2, Dixon returns to 22 20 yd return

WF Ball :58

W23 1-10 Smith thru line for 3
W26 2-7 Smith off tackle for gain of 5 as game ends

Final Score: FSU 35 Wake Forest 0

FLASH FOOTBALL STATS

Quick Halftime and After Game Reports of Vital Team Statistics and Individual Leaders

HALFTIME

Circle One

FINAL

TEAM STATISTICS

	<u>FSU</u>	<u>WAKE FOREST</u>
First Downs	<u>16</u>	<u>5</u>
Rushing Yardage (Net)	<u>153</u>	<u>73</u>
Passing Yardage (Net)	<u>180</u>	<u>26</u>
Passes (Completions-Attempts)	<u>13-25</u>	<u>4-15</u>
Passes Intercepted by	<u>0</u>	<u>0</u>
Punts (Number-Average)	<u>6-44.3</u>	<u>11-34.6</u>
Fumbles Lost	<u>0</u>	<u>1</u>
Yards Penalized	<u>60</u>	<u>70</u>

INDIVIDUAL LEADERS

FSU

RUSHING	Att'd	Net Yards	Avg.
<u>PRITCHETT</u>	<u>6</u>	<u>45</u>	<u>7.5</u>
<u>SPOONER</u>	<u>11</u>	<u>41</u>	<u>3.9</u>
<u>MANKINS</u>	<u>9</u>	<u>31</u>	<u>3.4</u>

PASSING	Att'd	Compl.	Net Yards
<u>PRITCHETT</u>	<u>18</u>	<u>10</u>	<u>119</u>
<u>HAMMOND</u>	<u>6</u>	<u>2</u>	<u>44</u>
<u>GERO</u>	<u>1</u>	<u>1</u>	<u>17</u>

PASS RECEIVING	No. Rec'd	Net Yards	For TD
<u>WETHERELL</u>	<u>4</u>	<u>32</u>	<u>0</u>
<u>WETTSTEIN</u>	<u>3</u>	<u>67</u>	<u>1</u>
<u>FENNER</u>	<u>2</u>	<u>44</u>	<u>0</u>

WAKE FOREST

RUSHING	Att'd	Net Yards	Avg.
<u>CARAZO</u>	<u>3</u>	<u>18</u>	<u>6</u>
<u>HECK</u>	<u>7</u>	<u>18</u>	<u>2.6</u>
<u>HAUSWALD</u>	<u>8</u>	<u>17</u>	<u>2.1</u>

PASSING	Att'd	Compl.	Net Yards
<u>Wilson</u>	<u>9</u>	<u>3</u>	<u>20</u>
<u>Hauswald</u>	<u>6</u>	<u>1</u>	<u>6</u>

PASS RECEIVING	No. Rec'd	Net Yards	For TD
<u>HENRY</u>	<u>2</u>	<u>17</u>	<u>0</u>
<u>SLONE</u>	<u>1</u>	<u>6</u>	<u>0</u>
<u>GOLIGATLY</u>	<u>1</u>	<u>3</u>	<u>0</u>

FINAL INDIVIDUAL FOOTBALL STATISTICS

FLORIDA STATE

RUSHING

Player	Att.	Gain	Loss	Net
PRITCHETT	6	53	8	45
SPOONER	11	42	1	41
MANKINS	9	31	-	31
MOREMAN	11	32	8	24
GIARDINO	6	10	1	9
HAMMOND	1	3	-	3

PASSING

Player	Att.	Compl.	Intc.	Yds.
PRITCHETT	18	10	0	119
HAMMOND	6	2	0	44
GERD	1	1	0	17

PASS RECEIVING

Player	No.	Yds.	TD
WETHERELL	4	32	0
WEITSTEIN	3	67	1
FENNER	2	44	0
BLANKINSHIP	2	23	0
J. JONES	1	7	0
MANKINS	1	7	0

PUNTING

Player	No.	Avg.
HOSACK	6	44.3

KICKOFF RETURNS

Player	No.	Yds.
MOREMAN	1	24

PUNT RETURNS

Player	No.	Yds.
BIRENT	2	17
CAMPBELL	1	70

PASS INTERC.

Player	No.	Yds.
--------	-----	------

WAKE FOREST

RUSHING

Player	Att.	Gain	Loss	Net
CARAZO	3	19	1	18
HECK	7	18	-	18
HAUSWALD	8	29	12	17
GOLIGHTLY	6	13	2	11
WILSON	11	22	13	9
SMITH	2	7	-	7
DAVIS	1	3	-	3

CENTER PASS	1	-	10	-10
-------------	---	---	----	-----

PASSING

Player	Att.	Compl.	Intc.	Yds.
WILSON	9	3	0	20
HAUSWALD	6	1	0	6

PASS RECEIVING

Player	No.	Yds.	TD
HENRY	2	17	0
SLONE	1	6	0
GOLIGHTLY	1	3	0

PUNTING

Player	No.	Avg.
SHILLINGLAW	11	34.6

KICKOFF RETURNS

Player	No.	Yds.
DIXON	6	110

PUNT RETURNS

Player	No.	Yds.
GOLIGHTLY	1	2

PASS INTERC.

Player	No.	Yds.
--------	-----	------

FSU vs. WAKE FOREST Nov 6, 1965

FINAL TEAM FOOTBALL STATISTICS

	<u>FSU</u>	<u>WAKE FOREST</u>
First Downs Rushing	7	3
First Downs Passing	9	1
First Downs by Penalties	0	1
TOTAL FIRST DOWNS	16	5
Number Attempts Rushing	44	39
Yards Gained Rushing	171	111
Yards Lost Rushing	18	38
NET YARDS GAINED RUSHING	153	73
Number Passes Attempted	25	15
Number Passes Completed	13	4
Number Passes Had Intercepted	0	0
NET YARDS GAINED PASSING	180	26
Number Plays Rushing and Passing	69	54
TOTAL OFFENSE YARDAGE	333	99
Number Opponent's Passes Intercepted	0	0
NET YARDS INTERCEPTIONS RETURNED	0	0
Number Times Fumbled	6	11
Number Punts Had Blocked	0	0
PUNTING AVERAGE, YARDS	44.3-266	34.6-381
Number Punts Returned	3	1
NET YARDS PUNTS RETURNED	87	2
Number Kickoffs Returned	1	6
NET YARDS KICKOFFS RETURNED	24	110
Number Times Penalized	6	2
TOTAL YARDS PENALIZED	60	7
Number Times Fumbled	1	2
NUMBER OWN FUMBLES LOST	0	1
<u>CENTER PASS-10yd.</u>		

Scoring: FSU - ROBERTS - 30yd FG; PRITCHETT - 10yd Run; PAT. K - No good;
PRITCHETT - WETSTEIN - 40yd Pass; Roberts - PAT. K - good;
SPONNER - 1yd Run - PAT. K - No good; Gooding - 1yd Run; PAT. R - no good;
CAMPBELL - 70yd Pass Return; PAT. K - Roberts - good;
 Attendance: 26, 150 Weather: Cool, Cloudy

QUOTES FROM BILL TATE:

"Too big, too strong and too quick. That about sums it up. We tried to pour everything we could to them, but just kept going downhill while they got stronger and just kept coming.

"Our field position was lousy all afternoon. We never had a chance to open up on offense. We had our backs to the wall the entire first half. That was the turning point of the ball game.

"FSU is the best we have faced this year. Their defense was just too much. We did some things okay, but most of the time we were spotty.

#####

QUARTERBACK JON WILSON -- "We just couldn't move. I couldn't do a thing. Everytime I turned around someone was right there."

Guard and Linebacker Lynn Nesbitt-- "The quickest line I have seen in two years. They moved too fast."

#####