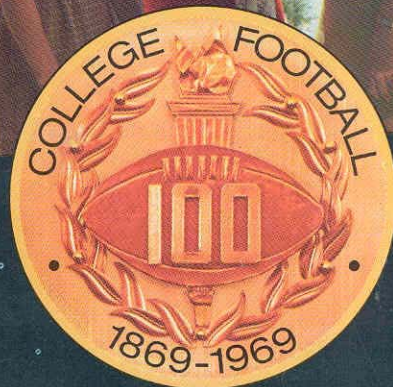
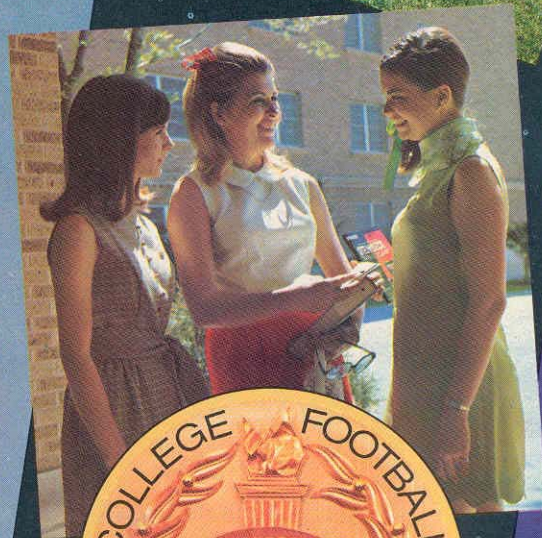
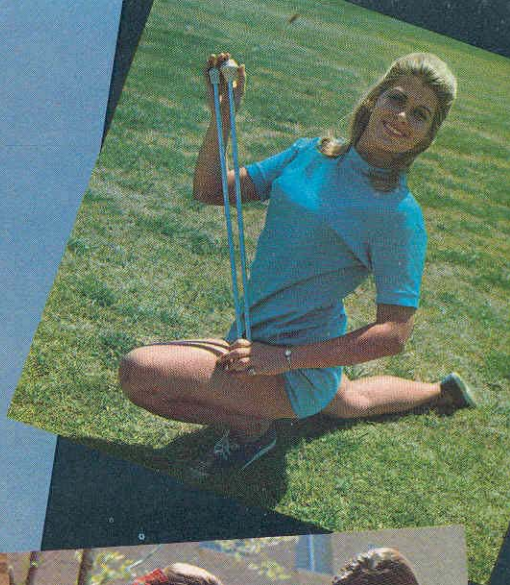
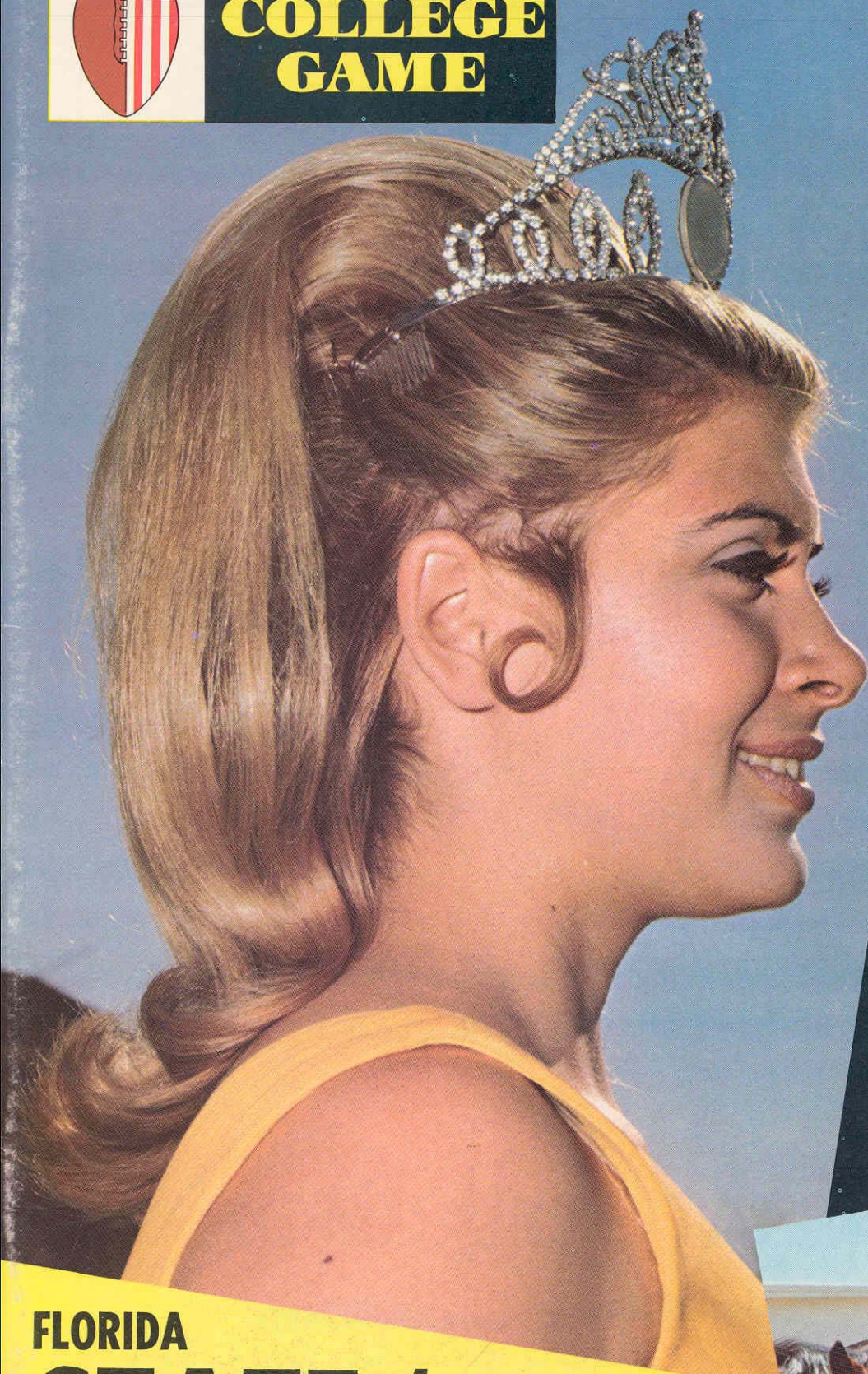


# THE COLLEGE GAME



Barbara Specht

*the College Football  
Centennial Queen*



FLORIDA  
**STATE** / MISSISSIPPI  
STATE

Football Magazine

OCTOBER 25, 1969

75 CENTS



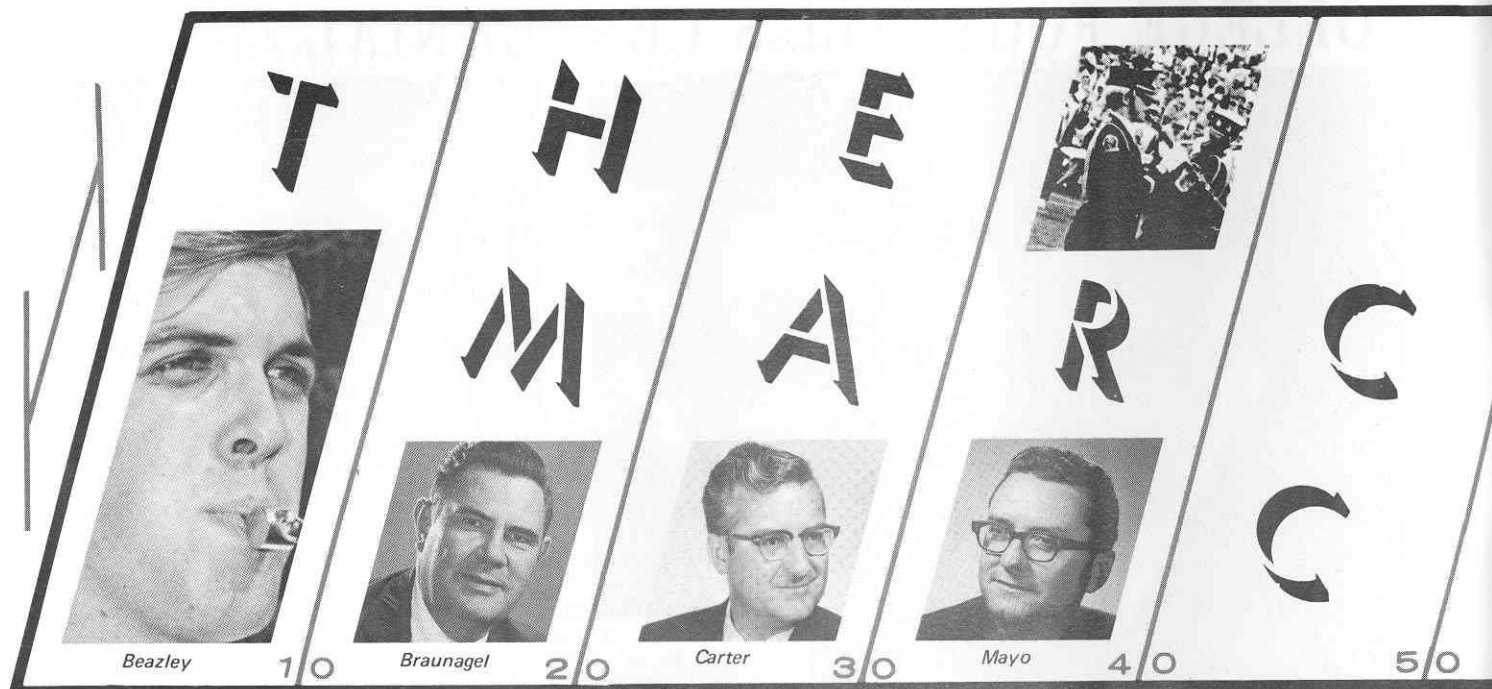
## Barbara's Busy Year

# COLLEGE FOOTBALL'S CENTENNIAL QUEEN



College football's Centennial Queen Barbara Specht, a junior at Texas Technological College, has spent a busy year since she was selected by the nation's college football fans and crowned at last year's Shrine East-West Game. She has travelled extensively to promote the Centennial and to talk of the values and traditions of college football and on the activities planned for the 100th Anniversary season. Here's a photo report on highlights of her year. At upper left she posed with star entertainers Art Linkletter and Dennis Morgan at the NCAA Honors Luncheon; at top right she visited the United Nations during a New York tour; in the middle, she visited Army's spring football practice and chatted with Cadets Tom Wheelock, a 1968 defensive star, and 1969 Captain Lynn Moore; at bottom left, Queen Barbara paused at Rockefeller Center during a visit with New York media to examine the helmet worn by Bennie Oosterbaan, Michigan's Hall of Fame end, in 1925-27; at the bottom right, her reign started just moments before this picture was taken, when she was crowned at the Shrine game; here she poses with Princesses Kathy Loghry, Oregon State University, left, and Brenda Shrum, University of Delaware, and Shrine greeter Tiny Clews. Queen Barbara will continue her activities through the 1969 season.





By Celia Ansley, Office of Information Services

For Tallahasseans who live near the Florida State University campus, one of the earliest signs of fall is the sound of the Marching Chiefs going through their paces.

A full-throated version of the "FSU Fight Song" will swirl in the late afternoon air only to be broken off in mid-note.

Results of the long hours of work are seen at all home and most out-of-town football games as the Chiefs step briskly out onto the field to present the pre-game warmups and the colorful half-time shows.

Robert T. Braunagel, band director, said the band feels that besides making music, part of their responsibility at games is building spirit.

Spirit is something the Marching Chiefs have in abundance, enough for themselves and some to spare.

This spirit is "one of those intangible things" composed of pride in the organization and the attitude of the people running the group, according to Braunagel. He added "it comes within the group."

Helping "run the group" are assistant directors Charles Carter, who does the musical arrangements, and Richard Mayo.

Braunagel explained that by and large the band people participate because they enjoy it. Very few are doing it as a requirement, and even those who do catch the feeling when they get caught up in the pace.

Braunagel said he tries to build personal involvement. "We have no discipline," he said, "really." "Each kid has an individual responsibility." He feels this attitude contributes to the atmosphere of the organization, and helps the kids with life in general.

He commented most bands are autocratic and added with a grin, "Most people would go crazy running a band the way I do."

Braunagel said when he became band director about six years ago he had two goals in mind. The first was to have the band be "top flight"; the other—"it should also be fun for the kids to do."

The Chiefs pride themselves on two things, their precision marching and their sound. Braunagel feels "comparably there isn't a better band around on the field."

Of course, creating a top flight marching band is work.

To get the movement and the sound the band spends a tremendous amount of time on the practice field.

At the beginning of the season, Braunagel explained, they spend six or seven hours in rehearsal for each minute of performing on the field. Farther into the season, rehearsal is cut to about an hour and a half or two hours per minute of performance. And, by the end of the season, it's only one hour practice per minute of performance. An equal amount of time is spent rehearsing music and formations.

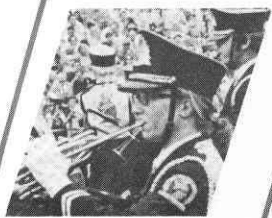
The average half-time show runs from seven to 10 minutes and then there are pre-game warmups too.

The new people come in several days before the veterans; and all bandsmen are on campus about a week and a half before registration begins.

Newcomers get an initiation period of about three days. At that time the drill assistants and row leaders, all experienced bandsmen, pound the basic drill patterns and movements into the novices.

Braunagel commented that teaching the basics is getting to be "less of a problem each year because more high school bands are imitating us."





Hendrickson



H  
H

I  
I

N  
N

G  
F

S

40

30

20

10

This early instruction is carried on in a manner reminiscent of Marine boot camp. The instructors' commands of "get it up," "make it hurt!" and "make some noise." are supplemented with heckling from early-returning veterans lounging on the sidelines. This is all done in good humor; but it gets the point across, and adds to the character of the organization.

"Quite a number of hours" of planning goes on before the band ever takes the first step or plays the first note.

Braunagel, Mayo and Carter work closely together to get the patterns shaped.

First, music is selected, then the intricate movements to create a particular formation are figured out with a complicated formula. After the visual design is completed, it goes to Carter, who Braunagel calls "the best in the world", to get each beat of music matched to each step taken.

Braunagel said the acoustics in the stadium are difficult and they have to work particularly hard to get the clear notes for which they are known.

He explained that such factors as the directions various instruments will face, and places they will be moving, all have a bearing on the musical arrangements.

Braunagel said they don't often repeat shows, but they sometimes carry good ideas from one show to another. Each production, generally, is a whole new group of tunes and formations.

Braunagel figures there are about 225 people in the Marching Chief organization. This includes the 180 marching members, alternates and the 15 majorettes.

On the field the Chiefs are led by Drum Major Herschel Beazley of Decatur, Ga., a music education major. Head Majorette is Mary Lynn Hendrickson of Miami. Beazley

conducts the band when they are on the field as well as helping with drills.

Braunagel said this year they had to turn away 20 applicants because they didn't have the uniforms to put on them. He added that they did increase the band membership this year from last season's 160 members.

Requirements for band membership are a "C" average and the ability to play an instrument. A student does not have to be a music major. In fact, Braunagel said, "We try to encourage as many non-music majors as possible. We'd like to be a composite of the whole university life." He added he feels that it is.

At present the band is about 50-50 music majors and others.

According to one bandsman another requirement for participation is "a great deal of physical strength." Braunagel confirmed this. "If they live through the first three days, normally they make it."

People interested in joining the band should contact the School of Music Band Office in Opperman Music Hall. They then will be told when to report to early practice in the fall. At that time tryouts are held. Those surviving the first days are then members of the Chiefs. Students get one hour of class credit for band work.

When the bandsmen turn in their uniforms at the end of football season they need not turn off their interest in band music.

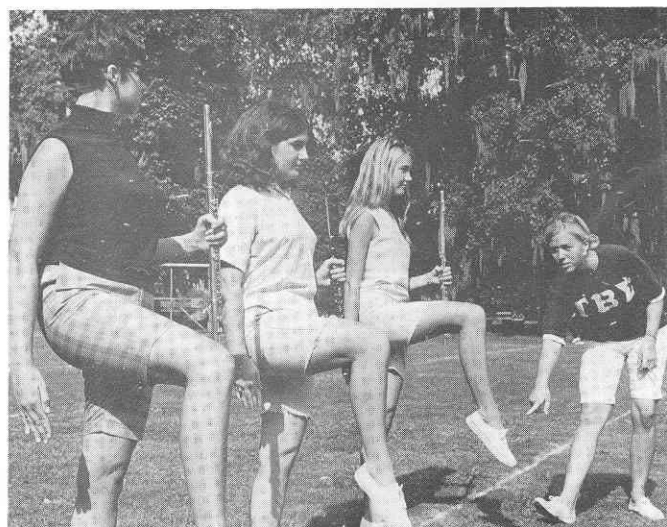
There are three concert groups organized for students with a love of music and a desire to play. Two are select bands, the Wind Ensemble with some 45 members and the Symphonic Band. The other, the Concert Band, is open to anyone and has between 60 and 80 members.



**WITH 2 CONVENIENT  
LOCATIONS TO  
SERVE YOU**

**LOCATION NO. 1  
1001 W. PENSACOLA ST.  
PHONE 224-0731**

**LOCATION NO. 2  
836 LAKE BRADFORD RD.  
PHONE 222-3523**



## **THE MARCHING CHIEFS**

*Continued from page 9*

*Braunagel has been connected with the Marching Chiefs for over 20 years. He joined the School of Music faculty in 1947 and was named director of the Marching Chiefs in May of 1963. He had been assistant director under Dr. Manley R. Whitcomb since 1953. He holds the bachelor of music degree from Cincinnati Conservatory of Music, the B.S. degree from the University of Cincinnati and the Master of Music degree from the University of Texas.*

*Carter came to Florida State in 1953 at the request of Dr. Whitcomb, then band director. He was invited to arrange the music for the Chiefs and he has been staff arranger since.*

*In addition to his duties at Florida State, Carter does extensive free-lance arranging and composing. He received the bachelor of music degree in theory and composition from Ohio State University. His master of music degree was earned from Eastman School of Music.*

*New assistant director this season, Richard Mayo, returns to Florida State after earning his master of arts degree from Columbia University. He received his bachelor of music education degree from Florida State in 1955.*

*In addition to being assistant to the coordinator of University bands and assistant director of the Marching Chiefs, Mayo's duties include teaching instrumental music education classes.*

The Chiefs are a part of the overall School of Music program under Dean Wiley L. Housewright's direction.

The school is a vital part of the University, serving as an agency for the cultural development of the campus and the community.

Numerous concerts and recitals are offered by the school throughout the academic year.

Among the highlights of the season are the Opera Guild productions. The first presentation of the year will be Mozart's comic opera "The Abduction from the Harem" on Dec. 5 and 6.

Also scheduled are productions of the powerful music drama "Sister Angelica" by Giacomo Puccini, on Jan. 27 and 28, and two one-act operas by visiting composer Gian-Carlo Menotti, April 23-25.

Other attractions include the traditional Christmas Vespers by the Women's Glee Club in December and the Young People's Concert by the University Symphony in March.

Other performing organizations include the Chamber Chorus, Chamber Orchestra, Choral Union, Collegians (Men's Glee Club), Dance Theater, Madrigal Singers, Percussion Ensemble, Symphonic Band, University Chorus and University Singers.

In addition there are some 20 student and faculty ensembles, including the Tallahassee Woodwind Quintet, the Brass Trio and Florestan String Quartet.

The School of Music sponsors its own Lecture Series and a Faculty Recital Series.

These recitals by outstanding faculty members are scattered throughout the year and feature such names as Edward Kilenyi, pianist; Elena Nikolaide, mezzo-soprano; Betty Jane Grimm, contralto; Eugene Talley-Schmidt, tenor; and Yvonne Ciannella, soprano.

Special programs are presented at various times during the school year, including the National French Horn Workshop, the Manhattanville Music Curriculum Workshop, Midwinter Symposium of Bands, Marching Band Leadership Camp, Summer Music Camp, Youth Symphony and Youth Chorus.

The School of Music, considered to be one of the outstanding ones in the nation, has several academic areas that are almost unique. One of these is the music therapy program. Only some six schools throughout the country have this curriculum and Florida State has the only one in the east. Students come from as far as New York to take courses on the therapeutic value of music and its implications for hospitals and sanitariums.

A new program this year is the doctoral course in musicology, one of the few of its kind in Florida.

The school has excellent programs in applied music, with music education having the largest enrollment.

Current enrollment in the school, one of the largest on the Florida State campus, is 679 students. 143 of these are graduate students and 536 are undergraduates.



GOING  
PLACES  
?

ATHENS, GEORGIA? ATHENS, GREECE?  
NEW YORK? NASSAU? NEPAL?

**TRAVEL IS OUR PROFESSION**

No Charge For Our Services  
Tickets - Reservations At Printed Rates



MARION HAY, PRESIDENT  
TOM LYLE

**TALLAHASSEE TRAVEL AND TOURS, INC.**

Formerly Hay Travel Service

Established 1930

CALHOUN AT CALL STREET

TELEPHONE 224-4161



**Lindy's  
Fried Chicken**

**Call 224-5811** YOUR ORDER WILL BE WAITING

SPECIAL BOX — 3 PCS. CHICKEN F.F., COLE SLAW & ROLLS	1.20
1/2 FRY CHICKEN — 4 PCS. CHICKEN, F.F. COLE SLAW & ROLLS	1.45
WHOLE CHICKEN — 8 PCS. (CHICKEN ONLY)	2.25
BUCKET 'O CHICKEN — 15 PCS. (W/CHOICE OF SLAW OR GRAVY & ROLLS)	4.15
BARREL 'O CHICKEN — 21 PCS.	5.50

1447 THOMASVILLE RD.

PHONE 224-5811

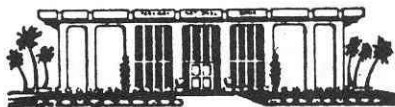
OPEN 7 DAYS A WEEK — INCLUDING SUNDAY



# WHERE YOU WILL FIND YOUR FRIENDS

701 W. JEFFERSON  
South Gate F.S.U.

## PARKWAY NATIONAL BANK



BANK THE QUICK WAY - BANK THE PARKWAY  
COURTESY • CONFIDENCE • CO-OPERATION

Telephone: 877-4121  
1407 East Lafayette Street  
Tallahassee, Florida

## TONIGHT'S HALF-TIME

# The Marching Chiefs

Robert T. Braunagel, Director of Bands  
Charles Carter, Ass't. Director and Arranger  
Richard D. Mayo, Assistant Director  
Herschel Beazley, Drum Major  
Mary Lynn Hendrickson, Head Majorette  
Doug Minear, Announcer

### BAND DAY

THEME: GREAT MOMENTS IN MUSIC

The Florida State University School of Music is pleased to present the second in a series of band innovations.

This evening the Marching Chiefs will present the second original composition written for the Marching Chiefs by Dr. John Boda, professor of composition in the School of Music. The first composition was presented in 1964 and was received with enthusiasm and acclaim.

The music is contemporary, in a modern dissonant serious style, and is a deviation from the usual halftime contributions. Dr. Boda is one of the outstanding composers of this century and tonight's performance represents the Marching Chiefs second effort to present a serious work specifically written for, and performed by, a marching band. The musical sounds are visually enhanced by the choreographed movements of the Marching Chiefs.

The Marching Chiefs welcome you to the premier performance of "Second Band Ballet." Music by John Boda, Formations by Robert Braunagel.

### MASSED BAND

Opening with the Massed Band from eleven high schools, under the baton of assistant director and arranger Charles Carter, we present an antiphonal arrangement of *Toccata* by Aureli Bonelli.

Changing the pattern, the Massed Band presents an original arrangement by Charles Carter of Chester.

We close with the ever-popular *1812 Overture* in a most exciting arrangement.

### THE HIGH SCHOOL BANDS

School	Location	Director
Brooks County H. S.	Quitman, Georgia	Bob Gaines
Chattahoochee H. S.	Chattahoochee, Florida	J. Broox Jones
Clay H. S.	Green Cove Springs, Fla.	Malcolm H. Kemp
Crisp County H. S.	Cordele, Georgia	R. C. Bissett
Florida H. S.	Tallahassee, Florida	Glen Heinlein
Nathan B. Forrest H. S.	Jacksonville, Florida	Winford E. Franklin
Leon H. S.	Tallahassee, Florida	F. Lewis Jones
Milton H. S.	Milton, Florida	John H. Chalker
James S. Rickards H. S.	Tallahassee, Florida	Mike Maurer
Sneads H. S.	Sneads, Florida	Henry C. Lengnick
Washington H. S.	Pensacola, Florida	Theodore Bennett





## Why we have a special interest in serving you

Ours is an independent telephone company which means we're really part of this community. Many of you have a direct interest in our company. We have to work harder and do more to merit your confidence. And since 40% of the area of the growing United States (including Alaska and Hawaii) is served by Independent companies, we must be doing something right.



southeastern  
telephone company

## Bill Peterson

by JACK HAIRSTON

Sports Editor, Jacksonville Journal



Jack Hairston

Lonnie Burt did me no favor when he asked me to write this page about Florida State University Football Coach Bill Peterson. Not that Pete and I aren't old friends, going back to the days when he was an assistant at Louisiana State University and I was a New Orleans sports writer who covered the Bayou Bengals regularly.

But what in the devil's name can you tell an FSU fan about the winningest Seminole football coach ever?

The average FSU fan knows almost everything there is to know about Bill Peterson, right down to which house he lives in (because the FSU fan has marched out there to participate in a demonstration designed to persuade Pete from leaving for a pro job), and he knows Pete is a mixture of charm and fire, gross pessimism and unbeatable determination (because he's heard him speak before many a group and watched him pace the sidelines during many a game), and he already knows Pete is one of the four or five best coaches in the business (because he's got eyes and can see for himself by what goes on right out here at Doak Campbell Stadium).

But I don't give up easily, so I'm going to reach way down deep and try to come up with a few things you haven't heard before, or if you have heard a couple of 'em, maybe you've forgotten them.

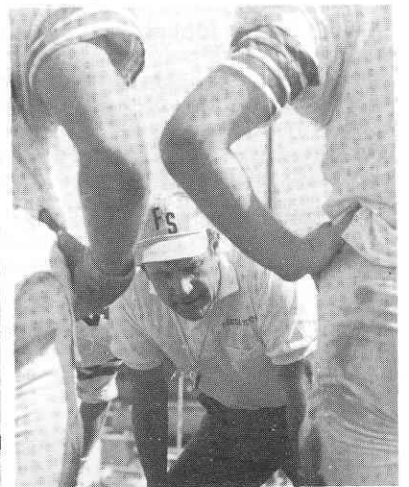
Such as:

The first year he coached a high-school football team, he did double duty, putting in part of each afternoon coaching that team and part of each afternoon playing end for Ohio Northern, where he was a senior gridder. . .

While a high-school coach, he spent part of each summer at the camp of the Cleveland Browns, watching Paul Brown build those great teams, and he's never forgotten Brown's kindness in permitting him the inside view.

While producing state-championship teams at Mansfield (O.) High, he became offseason friends with a Mansfield native named Paul Dietzel, and when Dietzel moved from an Army assistant job to head coach at LSU, he gave Pete his first college coaching opportunity. Hanging up the phone after Dietzel called, Pete told his wife, Marge, "Get the curtain rods down and the stuff packed. We're going to LSU." He didn't hesitate on the breakthrough chance, and he never gave her a chance to discuss it, as he did regarding recent opportunities when she talked him out of two lucrative pro head-coach jobs (for which every true FSU fan will always be indebted to her). . .

The day Pete signed to coach FSU, he almost got back on the plane to return to Baton Rouge before the final interview. A mysterious phone caller identified himself (incorrectly) as a member of the athletic committee and told Pete there'd been a complete change in plans. Half enraged, half dumbfounded, Pete considered flying out, but he somehow wound up going to the committee meeting, quite possibly to give the committee a piece of his mind for the way they were running things. To his surprise, he was greeted with open arms, and when he left the room, he was FSU's head coach.





# TONIGHT'S GAME

By LONNIE BURT

Sports Information Director

Beware of unfriendly dog!

That sign could well be posted in State College, Miss., this season as Coach Charley Shira has his Mississippi State Bulldogs on the road back.

Not since 1965 have the Bulldogs been on the winning side of the ledger at this stage of the season. Presently, Mississippi State has a 3-2 season with victories over Richmond, Southern Mississippi and Texas Tech, while losing to Florida and Houston.

The 30-26 win over Texas Tech came last Saturday as quarterback Joe Reed replaced the injured Tommy Pharr and did an outstanding job. Reed, a transfer from Baylor where he was the starting quarterback in 1967 as a sophomore, completed 12 of 19 passes for 190 yards and two touchdowns.

Pharr injured a shoulder against Southern Mississippi and presumably won't see action tonight.

The Bulldogs have two of the Southeastern Conference's better wide receivers in ends Sammy Milner and David Smith. Milner has caught 29 passes for 358 yards and five touchdowns while Smith, who will back up Reed as the No. 2 quarterback, has 25 receptions for 369 yards and one score.

Bulldog Conn Canale is one of the finest punters in the country. The Memphis, Tenn., senior is averaging 40.7 on 34 kicks this season.

That victory over Richmond broke a long dry spell for the Bulldogs. It gave them their first triumph in 17 games. The win looks even better as the year progresses since Richmond went on to defeat Virginia Tech.

Senior tackle Jack Thomas heads a Mississippi State defense which has had problems so far. The 250-pounder from Myrtlewood, Ala., has kept opponents away from his area most of the time.

Florida State, going into the contest with a 3-1 record, excited its followers last Saturday with a 38-20 victory over Tulsa. The Seminole offense looked better than any time so far this season and quarterback Bill Cappleman connected on some long passes, an ingredient that has been missing most of the year.

Two Bulldog starters are Florida natives. Tailback Steve Whaley hails from Pompano Beach while rover Bill Crick comes from Jacksonville. The other Floridian on the squad is second unit defensive end Gene Wood, from Miami.

This will be the fourth meeting between Mississippi State and Florida State with the Seminoles holding a 3-1 advantage.



Established 1891

## GOODBODY & CO.

MEMBERS OF LEADING STOCK

and

COMMODITY EXCHANGES

Telephone 222-4380

P. O. Box 810

Tallahassee Bank & Trust  
Building

TALLAHASSEE, FLORIDA 32302

# FLORIDA STATE

NO.	NAME	POS.	CLASS	HT.	WT.	1968 STATUS	HOMETOWN
19	PHIL ABRAIRA	DB	Sr.	6-0	180	2VL	Ft. Lauderdale
75	RICHARD AMMAN	DT	Soph.	6-6	220	Frosh	Cocoa Beach
28	ROBERT ASHMORE	DB	Soph.	6-0	185	RS	Tallahassee
30	TOM BAILEY	RB	Jr.	6-2	212	1VL	Coral Gables
16	DAVID BARNES	DB	Soph.	5-11	175	Frosh	Maple Heights, O.
62	THERON BASS	LB	Jr.	5-11	200	1VL	Live Oak
80	STEVE BEVILLE	DE	Soph.	6-2	205	Squad	Fernandina Beach
54	BOBBY BURT	LB	Jr.	6-1	210	1VL	Cairo, Ga.
14	BILL CAPPLEMAN	QB	Sr.	6-3	210	1VL	Dunedin
11	DUANE CARRELL	PK-P	Soph.	5-10	170	Squad	Washington, D.C.
42	BILL CHESHIRE	P	Sr.	6-1	193	2VL	Odum, Ga.
77	JEFF CURCHIN	OT	Sr.	6-6	255	1VL	Ocala
32	EDDIE DAVIS	FL	Soph.	6-3	179	Frosh	Atlanta, Ga.
47	GEORGE DAVIS	FL	Soph.	6-0	180	RS	Winter Haven
82	RHETT DAWSON	SE	Soph.	6-1	187	RS	Valdosta, Ga.
55	ALLEN DEES	C	Soph.	6-2	196	Frosh	Lakeland
61	JOHN ESSEX	OT	Soph.	6-2	226	Frosh	Miami
18	KENT GAYDOS	SE	Soph.	6-6	209	RS	Dallas, Tex.
58	STEVE GILDEA	LB	Jr.	6-0	197	1VL	Daytona Beach
40	BRENT GILMAN	FB	Sr.	6-2	205	1VL	Long Beach, Calif.
84	MIKE GLASS	TE	Soph.	6-3	202	Frosh	Tampa
49	GUY GLISSON	LB	Soph.	6-0	195	Frosh	Tampa
35	MIKE GRAY	FL	Jr.	6-3	201	1VL	Lake Mary
44	BUDDY GRIDLEY	DB	Soph.	5-11	195	Frosh	Tallahassee
33	GRANT GUTHRIE	PK	Sr.	6-0	204	2VL	Claymont, Del.
86	RANDY HALL	DE	Jr.	6-0	206	1VL	Miami
51	BILL HUGHES	C	Jr.	6-1	225	1VL	Rockledge
48	JAMES JARRETT	FB	Soph.	6-2	207	RS	Elizabethton, Tenn.
78	WAYNE JOHNSON	OT	Sr.	6-2	238	2VL	Macon, Ga.
73	DUKE JOHNSTON	DT	Sr.	6-2	247	2VL	Ft. Lauderdale
24	JOHN LANAHAN	DB	Soph.	6-0	196	RS	Jacksonville
72	RANDY LOGAN	OG	Sr.	6-3	230	1VL	Seal Beach, Calif.
56	BILL LOHSE	LB	Jr.	6-1	221	1VL	St. Petersburg
57	RON LOWE	LB	Jr.	5-11	184	Squad	Thomaston, Ga.
74	ROBERT McEACHERN	DT-DE	Jr.	6-2	221	1VL	Tallahassee
89	J. W. McKINNIE	DE	Soph.	6-2	195	Frosh	Macon, Ga.
31	PAUL MAGALSKI	FB	Soph.	5-11	210	Frosh	Garfield Hts., O.
70	ROGER MINOR	OT	Soph.	6-3	241	Frosh	Delray Beach
22	DOUG MITCHELL	DB	Jr.	6-3	198	Squad	Williston
63	GEORGE MONTGOMERY	OG	Soph.	6-2	220	RS	Coral Gables
43	JOHN MONTGOMERY	DB	Soph.	6-1	191	Frosh	Jacksonville
27	ARTHUR MUNROE	RB	Soph.	6-1	184	RS	Quincy
41	CALVIN PATTERSON	RB	Soph.	5-10	190	Frosh	Miami
23	DON PEDERSON	FL	Jr.	6-0	181	1VL	Groveland
21	JOHN PELL	DB	Sr.	6-1	178	1VL	Pahokee
60	BARRY RICE	LB	Jr.	6-2	207	1VL	Fernandina Beach
88	BERYL RICE	DE	Jr.	6-0	201	1VL	Fernandina Beach
76	BILL RIMBY	OT	Soph.	6-4	221	RS	St. Petersburg
68	DAN ROATCHE	C	Soph.	5-10	198	Frosh	Hatboro, Pa.
29	BENNY RUST	DB	Soph.	6-0	188	RS	West Palm Beach
67	MIKE SAMMONS	OG	Soph.	6-1	206	Squad	Atlanta, Ga.
65	BILL SHAW	DT	Soph.	6-2	219	Frosh	Marietta, Ga.
52	CRAIG SOWERS	C	Soph.	6-4	224	Frosh	Ft. Lauderdale
71	WAYNE SPENCE	DT	Soph.	6-3	235	Frosh	Macon, Ga.
17	JACKIE SPEER	DB	Soph.	6-3	181	Frosh	Groveland
53	JAY STOKES	OG	Soph.	6-4	222	RS	Sanford
59	LARRY STRICKLAND	LB	Soph.	6-1	206	Frosh	Tallahassee
66	JOE STRICKLER	OT	Soph.	6-2	235	Squad	Avon Park
20	DANNY THOMAS	DB	Sr.	5-10	184	1VL	West Palm Beach
81	JIM TYSON	TE	Jr.	6-1	208	1VL	Pahokee
79	FRANK VOHUN	DT	Sr.	6-2	225	2VL	Brooksville
64	STAN WALKER	OG	Sr.	6-3	219	2VL	Tallahassee
83	RON WALLACE	DE	Jr.	6-2	187	1VL	Macon, Ga.
15	TOMMY WARREN	QB	Sr.	5-11	163	2VL	Coral Gables
12	FRANK WHIGHAM	QB	Soph.	6-0	181	Squad	Sanford
69	TOM WHITE	OT	Jr.	6-0	248	Squad	West Palm Beach
50	DAN WHITEHURST	LB	Soph.	6-4	207	Frosh	Adel, Ga.
87	TED ZAFFRAN	TE	Soph.	6-3	202	Squad	Orlando



• CABLE COLOR TV IN ALL ROOMS  
RECEIVING NINE CHANNELS

• POOL

• AIR CONDITIONED

• DIRECT DIAL PHONES

• Se habla Espanol

AMERICAN EXPRESS - DINERS - AMERICAN OIL  
PHILLIPS 66 - BANKAMERICARD  
MASTER CHARGE - CARTE BLANCHE

**DRIFTWOOD**  
MOTEL and RESTAURANT

Cocktails — Banquet Room

• Northwest corner of Campus  
on U.S. 90; Fla. 20 West

1402 W. TENN. (U.S. 90)  
(904) 224-4174

# MISS. STATE

NO.	NAME	POS.	CLASS	HT.	WT.	HOMETOWN
87	JOE ALDERMAN	DE	Soph.	5-10	200	Sidon, Miss.
83	BOB ANGER	OE	Soph.	5-11	173	Jackson, Miss.
63	STEVE BROWN	LB	Soph.	6-0	196	Springdale, Ark.
45	CONN CANALE	DB	Senior	5-10	172	Memphis, Tenn.
60	ROY CARNELL	OG	Senior	5-11	197	New Albany, Miss.
43	DICKIE CARPENTER	LB	Senior	6-1	205	Petal, Miss.
79	MIKE CHAPMAN	C	Soph.	6-3	195	Marshall, Texas
72	JERRY CONRAD	DT	Soph.	6-0	222	Parsons, Tenn.
50	BUDDY COOPER	OE	Soph.	6-0	186	Jackson, Miss.
32	BILL CRICK	DB	Junior	5-10	180	Jacksonville, Fla.
65	ROBERT CULVER	OG	Junior	5-10	204	Rockmart, Ga.
40	LOUIS D'AVIGNON	DB	Senior	6-0	175	Biloxi, Miss.
53	CHUCK DEES	LB	Soph.	6-1	211	New Orleans, La.
57	DANNY DORSEY	DB	Junior	5-11	179	Henderson, Texas
30	DON DUDLEY	FB	Junior	6-0	187	Wichita Falls, Texas
86	MIKE EATON	DE	Soph.	6-2	218	Ripley, Miss.
71	JOE EDWARDS	OT	Soph.	6-4	244	Louisville, Miss.
21	BOBBY GOSSETT	FB	Senior	5-11	199	New Albany, Miss.
51	RONNIE GRAY	C	Senior	5-11	248	Sidon, Miss.
66	JAN LEE GWIN	OG	Junior	5-10	211	Greenville, Miss.
62	JOE HART	OG	Junior	5-11	206	Greenville, Miss.
35	ERIC HOGGATT	WB	Soph.	6-2	188	Wisner, La.
48	JOEL HOLLIMAN	DB	Soph.	5-11	193	Millport, Ala.
14	JAY HUGHES	S	Soph.	5-10	177	Clarksdale, Miss.
31	JOE JENNINGS	LB	Senior	6-1	195	Montgomery, Ala.
73	CHUCK JORDAN	DT	Soph.	5-11	219	Decatur, Miss.
20	JOE JOY	DB	Soph.	5-10	178	Morgan City, La.
68	CHICK KING	LB	Soph.	6-1	203	Yazoo City, Miss.
37	BILL LANCASTER	DB	Soph.	6-2	171	Columbus, Miss.
64	MICKEY LEHNER	OG	Soph.	5-10	207	Jackson, Miss.
85	JOHN MALE	S	Soph.	5-10	177	Lititz, Pa.
81	JIM McALPIN	DE	Soph.	6-2	236	Magee, Miss.
23	TOM McELROY	DB	Soph.	5-9	169	Baldwyn, Miss.
77	TATE MARSH	OT	Junior	6-3	214	Greensboro, Ala.
88	SAMMY MILNER	OE	Junior	6-1	203	Jackson, Miss.
82	RONNIE MOORE	OE	Junior	6-2	203	Pascagoula, Miss.
12	STEVE NATALE	QB	Soph.	5-11	143	Madison, N. J.
55	JIM NELSON	LB	Soph.	5-10	188	Franklin, Mass.
34	BUDDY NEWSOM	DB	Junior	5-10	159	Newhebron, Miss.
61	CHARLES NICHOLSON	DT	Soph.	6-1	208	Forest Hill, Miss.
28	JIMMY PATRIDGE	DB	Soph.	5-10	180	Sidon, Miss.
47	GLENN PETERSON	FB	Soph.	6-1	199	Roswell, Ga.
17	TOMMY PHARR	QB	Senior	5-9	190	Canton, Ga.
19	JOE REED	QB-TB	Junior	6-2	196	Lorenzo, Texas
75	RUBE RHEA	OT	Soph.	5-11	201	Sommerville, Tenn.
54	ALEX ROMANOFF	C	Junior	5-11	206	Bay St. Louis, Miss.
89	DENNIS RUSHING	WB	Soph.	6-1	177	Dallas, Texas
76	FREDDY RUSSELL	OT	Senior	6-4	260	Montgomery, Ala.
11	DAVID SMITH	OE-QB	Junior	6-0	165	Knoxville, Tenn.
26	TERRY SMITHART	WB	Junior	6-0	185	Rolling Fork, Miss.
70	DURWOOD STEPHENS	DT	Junior	6-0	215	Wiggins, Miss.
52	JACK THOMAS	DT	Senior	6-2	260	Myrtlewood, Ala.
74	MACK THORNTON	DT	Soph.	5-11	211	Brownsville, Tenn.
33	MIKE WADE	LB	Senior	5-11	211	Laurel, Miss.
10	ANTHONY WALKER	TB	Soph.	5-9	159	Mineral Wells, Texas
44	STEVE WHALEY	WB	Soph.	5-10	188	Pompano Beach, Fla.
84	GENE WOOD	DE	Senior	6-0	198	Miami, Fla.
78	BUTCH YARBROUGH	OG	Soph.	6-0	195	Bainbridge, Ga.
80	BOB YOUNG	OE	Junior	6-2	211	San Antonio, Texas
46	LYNN ZERINGUE	TB	Senior	5-9	175	Thibodaux, La.

OFFICIALS: Referee—Pat McHugh, Chattanooga, Tenn.; Umpire—Harold F. Johnson, Jackson, Tenn.; Linesman—Jack P. Jordan, Atlanta, Ga.; Field Judge—Jack C. Bradford, Atlanta, Ga.; Back Judge—John M. Raine, Atlanta, Ga.; E.C.O.—Erich Sauerbrey, Jonesboro, Ga.



## FLORIDA STATE

11 Carrell—PK-P  
12 Whigham—QB  
14 Cappleman—QB  
15 Warren—QB  
16 Barnes—DB  
17 Speer—DB  
18 Gaydos—SE  
19 Abraira—DB  
20 Thomas—DB  
21 Pell—DB  
22 Mitchell—DB  
23 Pederson—FL  
24 Lanahan—DB  
27 Munroe—RB  
28 Ashmore—DB  
29 Rust—DB  
30 Bailey—RB  
31 Magalski—FB  
32 E. Davis—FL  
33 Guthrie—PK  
35 Gray—FL  
40 Gilman—FB  
41 Patterson—RB  
42 Cheshire—P  
43 J. Montgomery—DB  
44 Gridley—DB  
47 G. Davis—FL  
48 Jarrett—FB  
49 Glisson—LB  
50 Whitehurst—LB  
51 Hughes—C  
52 Sowers—C  
53 Stokes—OG  
54 Burt—LB  
55 Dees—C  
56 Lohse—LB  
57 Lowe—LB  
58 Gildea—LB  
59 Strickland—LB  
60 Barry Rice—LB  
61 Essex—OT  
62 Bass—LB  
63 G. Montgomery—OG  
64 Walker—OG  
65 Shaw—DT  
66 Strickler—OT  
67 Sammons—OG  
68 Roatche—C  
69 White—DT  
70 Minor—OT  
71 Spence—DT  
72 Logan—OG  
73 Johnston—DT  
74 McEachern—DT-DE  
75 Amman—DT  
76 Rimby—OT  
77 Curchin—OT  
78 Johnson—OT  
79 Vohun—DT  
80 Beville—DE  
81 Tyson—TE  
82 Dawson—SE  
83 Wallace—DE  
84 Glass—TE  
86 Hall—DE  
87 Zaffran—TE  
88 Beryl Rice—DE  
89 McKinnie—DE

## FLORIDA STATE 'Seminoles'

### OFFENSE

SE 18 Kent Gaydos  
82 Rhett Dawson  
LT 76 Bill Rimby  
78 Wayne Johnson  
LG 64 Stan Walker  
53 Jay Stokes  
C 51 Bill Hughes  
55 Allen Dees  
RG 63 George Montgomery  
67 Mike Sammons  
RT 77 Jeff Curchin  
66 Joe Strickler  
TE 81 Jim Tyson  
87 Ted Zaffran  
QB 14 Bill Cappleman  
12 Frank Whigham  
RB 27 Arthur Munroe  
30 Tom Bailey  
FB 48 James Jarrett  
40 Brent Gilman  
FL 35 Mike Gray  
23 Don Pederson

### DEFENSE

LE 86 Randy Hall  
89 J. W. McKinnie  
LT 74 Robert McEachern  
75 Richard Amman  
LLB 60 Barry Rice  
49 Guy Glisson  
MLB 56 Bill Lohse  
59 Larry Strickland  
RLB 57 Ron Lowe  
62 Theron Bass  
RT 79 Frank Vohun  
69 Tom White  
RE 83 Ron Wallace  
80 Steve Beville  
LC 43 John Montgomery  
21 John Pell  
RC 29 Benny Rust  
20 Danny Thomas  
LS 28 Robert Ashmore  
19 Phil Abraira  
RS 24 John Lanhan  
44 Buddy Gridley

PUNTS—11 Duane Carrell, 42 Bill Cheshire  
PLACEMENTS—33 Grant Guthrie, 11 Duane Carrell

## MISS. STATE 'Bulldogs'

### OFFENSE

SE 88 Sammy Milner  
82 Ronnie Moore  
QT 71 Joe Edwards  
79 Mike Chapman  
QG 60 Roye Carnell  
77 Tate Marsh  
C 51 Ronnie Gray  
54 Alex Romanoff  
SG 62 Joe Hart  
66 Jan Lee Gwin  
ST 76 Freddy Russell  
78 Butch Yarbrough  
SE 11 David Smith  
80 Bob Young  
QB 19 Joe Reed  
11 David Smith  
TB 44 Steve Whaley  
28 Jimmy Patridge  
WB 26 Terry Smithart  
35 Dennis Rushing  
FB 30 Don Dudley  
21 Bobby Gossett

### DEFENSE

LE 81 Jim McAlpin  
84 Gene Wood  
LT 52 Jack Thomas  
73 Chuck Jordan  
RT 72 Jerry Conrad  
70 Durwood Stephens  
RE 86 Mike Eaton  
87 Joe Alderman  
LLB 43 Dickie Carpenter  
31 Joe Jennings  
MLB 33 Mike Wade  
53 Chuck Dees  
RLB 63 Steve Brown  
55 Jim Nelson  
LHB 34 Buddy Newsom  
40 Louis D'Avignon  
S 48 Joel Holliman  
14 Jay Hughes  
Rover 32 Bill Crick  
23 Tom McElroy  
RHB 37 Bill Lancaster  
20 Buzz Joy  
Punter 45 Conn Canale  
PAT & FG 73 Chuck Jordan  
KO 33 Mike Wade

## MISSISSIPPI STATE

10 Walker—TB  
11 Smith—SE-QB  
12 Natale—QB  
14 Hughes—S  
17 Pharr—QB  
19 Reed—TB  
20 Joy—DB  
21 Gossett—FB  
23 McElroy—DB  
26 Smithart—WB  
28 Patridge—FB  
30 Dudley—FB  
31 Jennings—LB  
32 Crick—DB  
33 Wade—LB  
34 Newsom—DB  
35 Hoggatt—WB  
37 Lancaster—DB  
40 D'Avignon—DB  
43 Carpenter—LB  
44 Whaley—WB  
45 Canale—DB  
46 Zeringue—TB  
47 Peterson—FB  
48 Holliman—S  
50 Cooper—C  
51 Gray—C  
52 Thomas—DT  
53 Dees—LB  
54 Romanoff—C  
55 Nelson—LB  
57 Dorsey—DB  
60 Carnell—OG  
61 Nicholson—DT  
62 Hart—OG  
63 Brown—LB  
64 Lehner—OG  
65 Culver—OG  
66 Gwin—OG  
68 King—LB  
70 Stephens—DT  
71 Edwards—OT  
72 Conrad—DT  
73 Jordan—DT  
74 Thornton—DT  
75 Rhea—OT  
76 Russell—OT  
77 Marsh—OT  
78 Yarbrough—OT  
79 Chapman—OT  
80 Young—OE  
81 McAlpin—DE  
82 Moore—OE  
83 Anger—OE  
84 Wood—DE  
85 Male—OE  
86 Eaton—DE  
87 Alderman—DE  
88 Milner—OE  
89 Rushing—OE



# DRIFTWOOD MOTEL and RESTAURANT

Cocktails — Banquet Room

AMERICAN EXPRESS · DINERS · AMERICAN OIL · PHILLIPS 66  
BANKAMERICARD · MASTER CHARGE · CARTE BLANCHE

- CABLE COLOR TV
- POOL
- Northwest corner of Campus  
on U.S. 90; Fla. 20 West

1402 W. TENN. (U.S. 90)

- AIR CONDITIONED
- DIRECT DIAL PHONES
- Se habla Espanol

(904) 224-4174

TEAM  
CODE  
  
251

# SUMMARY OF FOOTBALL GAME STATISTICS — Home Team

Home Team FLORIDA STATE First Downs: (Rush) 13 (Pass) 14 (Pen.) 1 Total 28 Penalties Against: (No.) 10 (Yards) 128 Own Fumbles: (No.) 1 (Lost) 1

Player Code	PLAYER	RUSHING					FORWARD PASSING					TOT. OFFENSE		RECEIVING			INT. RETURNS			PUNTING			PUNT RETURNS			K. O. RETURNS			SCORING																	
		Times Carried	Yards Gain	Yards Loss	Net Gain	TD's	No. Att.	No. Comp.	Had Int.	Net Gain	Scoring TD's	Conv.	Total Plays	Net Gain	No. Caught	Yards Gain	TD's	No. Inter.	Yards Return	TD's	Times Kicked	Yards Kicked	Blkd.	Number Returns	Yards Return	TD's	Number Returns	Yards Return	TD's	Touch-downs	X Pts. Att.	Kick Made	Other X Pts. Att.	Field Goals Att.	Goals Made	Points										
01	ABRAIRA	A					B					C		D			E			F			G			H	2	40	0	S																
05	BAILEY	A	19	137	6	131	1	B				C	19	131	D	1	8	0	E				G			H				S	1						6									
12	CAPPLEMAN	A	9	24	28	-4	0	B	30	17	1	236	0	0	C	39	232	D				F			H				S																	
13	CARRELL	A					B					C		D			E			F	5	17	0	G			H		S	3	2			1	0	2										
20	DAVIS, G.	A					B					C		D	1	9	0	E				F			H				S																	
33	GRAY	A	1	0	0	3	-3	0	B				C	1	-3	D	2	29	1	E				G			H	1	13		S	1						6								
41	JARRETT	A	1	0	1	-1	0	B				C	1	-1	D			E				F			G			H		S																
56	MUNROE	A	25	108	5	103	1	B	1	1	0	22	1	0	C	26	125	D	1	12	0	E			F			H	1	21		S	1					6								
68	PEDERSON	A					B					C		D	2	27	0	E				F			G			H		S																
69	PELL	A					B					C		D			E				F			G	2	25		H		S																
73	RICE	A					B					C		D			E	1	0	0	F			G			H		S																	
85	TYSON	A					B					C		D	10	167	0	E				F			G			H		S																
91	WHIGHAM	A					B					C		D			E				F	1	42	0	G			H		S																
96	ZAFFRAN	A					B					C		D	1	6	0	E				F			G			H		S																
		A					B					C		D			E				F			G			H		S																	
		A					B					C		D			E				F			G			H		S																	
		A					B					C		D			E				F			G			H		S																	
		A					B					C		D			E				F			G			H		S																	
		A					B					C		D			E				F	3	01		G			H		S																
	TEAM TOTALS	A	55	269	43	226	2	B	31	18	1	258	1	0	C	86	484	D	18	258	1	E	1	0	0	F	6	239	0	G	2	25	0	H	4	74	0	S	3	3	2	0	0	1	0	20

Opponents MISS. STATE First Downs: (Rush) 7 (Pass) 7 (Pen.) 3 Total 17 Penalties Against: (No.) 4 (Yards) 31 Own Fumbles: (No.) 0 (Lost) 0

Enter Here Team Totals From Visiting Team Summary	RUSHING					FORWARD PASSING					TOT. OFFENSE		RECEIVING			INT. RETURNS			PUNTING			PUNT RETURNS			K. O. RETURNS			SCORING								
	Times Carried	Yards Gain	Yards Loss	Net Gain	TD's	No. Att.	No. Comp.	Had Int.	Net Gain	Scoring		Total Plays	Net Gain	No. Caught	Yards Gain	TD's	No. Inter.	Yards Return	TD's	Times Kicked	Yards Kicked	Blkd.	Number Returns	Yards Return	TD's	Number Returns	Yards Return	TD's	Touch-downs	X Pts. Kick		Other X Pts.		Field Goals		Points
										TD's	Conv.																			Att.	Made	Att.	Made	Att.	Made	
VISITING TEAM TOTALS	A 32	122	17	105	1	B 38	16	1	144	1	0	C 60	249	D 16	144	1	E 1	22	0	F 6	247	0	G 2	52	0	H 3	66	0	S 2	2	2	0	0	2	1	17

Date of Game OCT. 25, 1969 Where Played TALLAHASSEE, FLA. Authenticated by Leannie L. Stanford and W. H. Hunter  
(For Home Team) (For Opponents)



## ADDITIONAL STATISTICS

## SCORING PLAYS

List **all** scoring plays in sequence and all tries-for-points on the line following the touchdown.

Under "type of play" indicate rush, pass, interception runback, punt runback, kickoff runback or field goal. List tries-for-points as P.A.T. kick, P.A.T. rush or P.A.T. pass. Indicate missed tries-for-points by NG (no good).

On pass play, give passer first, then receiver, and combined yardage of pass and run. Measure runbacks from goal line, if started in end zone. Measure field goal attempted from point of kick. All other plays are measured from line of scrimmage.

[illegible]

Teams.	Score by Quarters:	1st	2nd	3rd	4th	Total
FSU		7	6	0	7	20
MISS. STATE		7	7	0	3	17

Official Attendance 33,011 Weather Conditions 64°, WIND NNE 5-10 MPH

TIME OF GAME

Kickoff 7:30 P.M.      End of Game 10:08 P.M.

TOTAL PLAYING TIME 2:07  
(Elapsed time less intermission)

## NON-SCORING LONG PLAYS

List all non-scoring long plays (including punts) gaining 70 yards or more, and **all missed field goal attempts for both teams.**

[illegible]

TEAM  
CODE

## SUMMARY OF FOOTBALL GAME STATISTICS — Visiting Team

208 Visiting Team MISS STATE First Downs: (Rush) 7 (Pass) 7 (Pen.) 3 Total 17 Penalties Against: (No.) 4 (Yards) 31 Own Fumbles: (No.) 0 (Lost) 0

Player Code	PLAYER	RUSHING					FORWARD PASSING					TOT. OFFENSE		RECEIVING			INT. RETURNS			PUNTING			PUNT RETURNS			K. O. RETURNS			SCORING													
		Times Carried	Yards Gain	Yards Loss	Net Gain	TD's	No. Att.	No. Comp.	Had Int.	Net Gain	Scoring TD's Conv.	Total Plays	Net Gain	No. Caught	Yards Gain	TD's	No. Inter.	Yards Return	TD's	Times Kicked	Yards Kicked	Blkd.	Number Returns	Yards Return	TD's	Number Returns	Yards Return	TD's	Touch- downs	X Pts. Att.	Kick Made	Other X Pts. Att.	Made	Field Goals Att.	Made	Points						
12	CANALE	A					B					C		D			E				F	6	24	1	G			H			S											
14	CRICK	A					B					C		D			E	1	22		F				G			H			S											
21	DUDLEY	A	7	23	0	23	B					C	7	23	D	2	36	E				F				G			H	2	44	S										
43	JORDAN	A					B					C		D			E				F				G			H			S	2	2			2	1	5				
56	MILNER	A					B					C		D	5	55	E				F				G			H			S											
71	REED	A	3	31	1	30	B	15	11	1	100	1	C	18	130	D				E				F			G		H			S										
76	SMITH	A	4	22	7	15	B	12	5		44		C	16	54	D	2	29	1	E				F			G	2	52	H			S	1						6		
77	SMITHAKT	A	8	1	3	6	B					C	8	6	D	3	10		E				F			G			H			S										
11	WHALFY	A	8	31	6	25	B					C	8	25	D	3	(3)		E				F			G			H			S	1						6			
	PATRIDGE	A	2	6		6	B	1				C	3	6	D	1	17	E				F				G			H	1	22	S										
		A					B					C		D			E				F				G			H			S											
		A					B					C		D			E				F				G			H			S											
		A					B					C		D			E				F				G			H			S											
		A					B					C		D			E				F				G			H			S											
		A					B					C		D			E				F				G			H			S											
		A					B					C		D			E				F				G			H			S											
		A					B					C		D			E				F				G			H			S											
		A					B					C		D			E				F				G			H			S											
	TEAM TOTALS	A	32	122	17	105	1	B	28	16	1	144	1	C	60	249	D	16	144	1	E	1	22		F	6	24	1	G	2	52	H	3	66	S	2	2	2		2	1	17

Opponents FLA. STATE First Downs: (Rush) 13 (Pass) 14 (Pen.) 1 Total 28 Penalties Against: (No.) 10 (Yards) 128 Own Fumbles: (No.) 1 (Lost) 1

Enter Here Team Totals From Home Team Summary	RUSHING					FORWARD PASSING					TOT. OFFENSE		RECEIVING			INT. RETURNS			PUNTING			PUNT RETURNS			K. O. RETURNS			SCORING																	
	Times Carried	Yards Gain	Yards Loss	Net Gain	TD's	No. Att.	No. Comp.	Had Int.	Net Gain	Scoring		Total Plays	Net Gain	No. Caught	Yards Gain	TD's	No. Inter.	Yards Return	TD's	Times Kicked	Yards Kicked	Blkd.	Number Returns	Yards Return	TD's	Number Returns	Yards Return	TD's	Touch- downs	X Pts. Kick		Other X Pts.		Field Goals		Points									
										TD's	Conv.																			Att.	Made	Att.	Made	Att.	Made										
HOME TEAM TOTALS	A	55	269	43	22	2	B	31	18	1	258	1	-	C	86	484	D	18	258	1	E	1	-	-	F	6	239	-	G	2	25	-	H	4	74	-	S	3	3	2	-	-	1	-	20

Date of Game OCTOBER 25, 1969 Where Played TALLAHASSEE, FL Authenticated by [Signature] and [Signature]  
(For Home Team) (For Opponents)



FLORIDA STATE VS. MISSISSIPPI STATE  
Doak Campbell Stadium, Tallahassee  
October 25, 1969 7:30 p.m.

TEMP: 64  
WIND: NE, 5-10

FSU Captains: 64 Walker, 20 Thomas Miss. St. 19 Reed, 43 Carpenter

FSU wins toss and elects to receive. Miss. State defends north. Wade kicks to Abairra on 12. Return 27 yards to F38.

FSU  
F38 1-10 Cappleman pass intended for Munroe incomplete  
F38 2-10 Cappleman pass complete to Tyson for 8 yards.  
F46 3-2 Bailey turns right corner for ~~xxxx~~ nine yards and 1st down.  
M45 1-10 Bailey at left corner for ten yards and 1st down.  
M35 1-10 Munroe on trap for one.  
M34 2-9 Bailey on pitchout goes 34 yards for TD. 62 yards/six plays  
Carrell PAT is good.

FSU 7, MSU 0 12:59

Hall kicks off out of bounds. Hall kicks again to Patridge on 11. returns 22 yards to 33

MSU 12:52  
M33 1-10 Smith pass intended for Milner incomplete. Ashmore defends.  
M33 2-10 Reed pass intended for Dudley incomplete. short.  
M33 3-10 Reed pass intended for Smithart incomplete  
M33 4-10 Canale punts to Pell on F23. returns 37yards, but FSU penalized 15 for holding.

FSU 12:17  
F23 1-10 Bailey goes for 13 yards and 1st down.  
F36 1-10 Bailey at left end for 11 yards and 1st down.  
F47 1-10 Munroe gets 15 yards, but fumbles, ~~Crack~~ recovers for MSU  
Crick

MSU 11:16  
M38 1-10 Smithart gets four.  
M42 2-6 ~~Smithart~~ Patridge gets three  
M45 3-3 Whaley for no gain.  
M45 4-3 Canale punts ~~in~~ out of bounds on FSU 10. 45 yard kick.

FSU 9:26  
F10 1-10 Munroe off tackle for 15 yards. 1st down.  
F25 1-10 Munroe twists for ~~xxxxxxxxxxxxxxxxxxxxxxxx~~ nine more;  
~~F25 1-10~~  
F34 2-1 Munroe gains five, but FSU loses 15 yards, Clipping. 1st down.  
~~F25 1-10~~  
F23 1-25 Cappleman pass complete to Tyson for 24 yards.  
F47 2-1 Jarrett loses one.  
F46 3-2 Cappleman pass complete to G. Davis for nine yards and 1st down.  
M45 1-10 Bailey tries left end for one, but FSU loses 15, holding.  
F46 1-19 Cappleman to pass, but scrambles for two yards.  
F48 2-17 Cappleman pass intercepted ~~for~~ by ~~xxxxxxxxxxxxxxxx~~ Crick who returns 22 yards.

MSU ~~9:09~~ 5:09  
F48 1-10 Smithart gets two.  
F46 2-8 Reed pass complete to Milner for 13 yards and 1st down.  
F33 1-10 Smithart gets one.  
F32 2-9 Reed pass complete to Smithart for three yard loss. Barry Rice defends  
F35 3-12 Reed pass complete to Patridge for 17 yards and 1st down.  
F18 1-10 Dudley gets ~~in~~ two.  
F16 2-8 Reed pass complete to Smith for 16 yards and TD.  
Jordan kick is good. 48 yards/7 plays

FSU 7, MSU 7 1:58

Jordan kicks to Abairra on six. returns 13 yards to 19.

FSU 1:50  
F19 1-10 Bailey gets five around left end.  
F24 2-5 Bailey at right tackle for two yards.  
F26 3-3 Cappleman pass complete to Bailey for eight yards and 1st down.  
F34 1-10 Cappleman pass complete to Munroe for 12 yards and 1st down, then MSU penalized 15, personal foul as quarter ends.

FSU 7, MSU 7

ATTENDANCE: 33, 011

SECOND QUARTER

FSU  
M39 1-10 Cappleman complete to Tyson for 15 yards and 1st down.  
M24 1-10 Munroe squirms for eight yards  
M16 2-2 Munroe at right tackle for three, then MSU loses half distance to seven for personal foul  
M7 1-G Cappleman sweeps for five yards  
M2 2-G Munroe right side for one.  
M1 3-G Munroe hits left side for TD. 81 yards/10 plays  
Carrell kick is wide.

FSU 13, MSU 7 13:12

Hall kicks out of bounds again. Hall kicks again to Dudley who returns 32 yards to MS 47

MSU 12:54  
M47 1-10 Smith pass complete to Whaley for four yards.  
F49 2-6 Reed scrambles, slips and loses one.  
-50 3-7 Reed pass complete to Smith for 13 yards and 1st down.  
F37 1-10 Dudley no gain on draw.  
F37 2-10 Reed pass complete to Whaley for nine yard loss, but FSU penalized 15 yards, personal foul  
F31 3-4 Smithart dives for two  
F29 4-2 Jordan 46 yard field goal attempt is shortx bounces out and FSU takes over on ~~MSU 49~~ ~~MSU 49~~ one.

FSU 10:28

~~FSU 10:28~~

F1 1-10 Bailey gets four  
F5 2-6 Munroe no gain.  
F5 3-6 Cappleman pass intended for Pederson incomplete  
F5 4-6 Carrell punts to Smith on 49, returns 45 yards to FSU 4

MSU 8:59

F4 1-G Whaley gains one.  
F3 2-G Reed pass complete to Whaley for two yards. FSU called for pass interference for 1st down.  
F1 1-G Whaley at left side for TD. 4 yards/3 plays  
Jordan kick is good.

MSU 14, FSU 13 8:17

Jordan kicks off to Abraira who hands off to Gray who returns 13 yards.

FSU 8:06

F27 1-10 Bailey picks up seven.  
F34 2-3 Munroe for no gain.  
F34 3-3 Cappleman pass complete to Tyson for 11 yards and 1st down.  
F45 1-10 Cappleman pass intended for Gaydos incomplete  
F45 2-10 Bailey gains five.  
E50 3-5 Cappleman to pass loses six.  
F44 4-11 Carrell punt rolls dead on MS 4. 52 yard punt.

MSU 4:45

M4 1-10 ~~Quintus~~ Dudley up gut for three  
M7 2-7 Dudley same place for six.  
M13 3-1 Dudley gets two and 1st down.  
M15 1-10 Reed keeps for 30 yards and 1st down.  
M45 1-10 Reed pass complete to Milner for two yard loss. Lanahan gets him.  
M43 2-12 Reed pass complete to Milner for 40 yards and 1st down.  
F17 1-10 Reed pass intended for Smithart incomplete, but interference called.  
F14 1-10 Reed scrambling gets nothing.  
F14 2-10 Reed pass intended for Smithart incomplete  
F14 3-10 Reed pass complete to Smithart for nine yards.  
F4 4-1 Smithart sweeps, but ~~Smithart~~ ~~Smithart~~ loses two. Lanahan

FSU 0:59

F6 1-10 Cappleman pass intended for Tyson incomplete  
F6 2-10 Cappleman pass complete to Gray for seven yds.  
F13 3-3 Cappleman keeps for 14 yards and 1st down.  
F27 1-10 Cappleman pass complete to Tyson for 15 yards and 1st down.  
F42 1-10 Cappleman to pass, runs for no gain.  
F 42 2-10 Cappleman pass complete to Pederson for seven yards as half ends.

MSU 14, FSU 13



# FLASH FOOTBALL STATS

Quick Halftime and After Game Reports of Vital Team Statistics and Individual Leaders  
(Approved Wire Services Form)

HALFTIME

TEAM STATISTICS

Circle One

FINAL

	MISS. STATE VISITORS	F. S. U. HOME TEAM
Score . . . . .	14	13
First Downs . . . . .	9	17
Rushing Yardage (Net) . . . . .	54	174
Passing Yardage (Net) . . . . .	100	116
*Return Yardage (Net) . . . . .	67	15
Passes (Compl'd - Att'd - Had Int'd) . . . . .	11-15-0	10-15-1
Punts (Number - Average) . . . . .	2-44.5	2-48
Fumbles Lost . . . . .	0	1
Yards Penalized . . . . .	21	69

\*Return of Punts, Intercepted Passes and Fumbles (not kickoffs).

## INDIVIDUAL LEADERS

MISS. STATE VISITORS				
RUSHING	Att'd	Net Yards	For TD	Long Gain
DUDLEY	5	13	-	6
SMITHART	5	7	-	4
REED	2	29	-	30
PASSING	Att-Compl-H.I.	Yds.	For TD	
REED	13-10-0	96	1	
	-	-	-	
PASS RECEIVING	No.	Yards	For TD	
WHALEY	3	3	-	
MILNER	3	51	-	
PATRIDGE	1	17	-	
SMITH	2	29	1	
PUNTING	No.	Avg.	Long Gain	
CANALE	2	44.5	45	

F. S. U. HOME TEAM				
RUSHING	Att'd	Net Yards	For TD	Long Gain
BAILEY	11	101	1	34
MUNROE	11	59	1	15
CAPPLEMAN	5	15	-	14
PASSING	Att-Compl-H.I.	Yds.	For TD	
CAPPLEMAN	15-10-1	116	0	
	-	-	-	
PASS RECEIVING	No.	Yards	For TD	
TYSON	5	73	-	
BAILEY	1	8	-	
MUNROE	1	12	-	
DAVIS	1	9	-	
PUNTING	No.	Avg.	Long Gain	
CARREL	2	48	52	

# THIRD QUARTER

Miss. St. receives. Hall kicks short. Taken by Hart. No return.

MSU

M40 1-10 Reed pass intended for Patridge incomplete  
M40 2-10 Whaley loses six. Wallace tackles.  
M35 3-16 Reed pass intended for Milner intercepted by Barry Rice on F37

End

FSU 14:03

F37 1-10 Cappleman pass intended for Gray incomplete  
F37 2-10 Cappleman pass complete to Tyson for 12 yards and 1st down.  
F48 1-10 Cappleman spilled for eight yard loss by Nelson.  
F40 2-18 Bailey sweeps left for ten yards.  
50 3-8 Cappleman pass intended for Pederson incomplete  
50 4-8 Carrell punts to ~~Matthew~~ Canale. Fair catch on 20.

MSU 11:56

M20 1-10 Dudley gets two  
M22 2-8 Reed pass complete to Smithart for four yards.  
M26 3-4 Smithart loses one. McEachern stops.  
M25 4-5 Canale punts out of bounds on FSU 29 46 yard punt.

FSU 10:06

F29 1-10 Cappleman pass intended for Bailey incomplete.  
F29 2-10 Gray on reverse loses ~~xxxxx~~ three.  
F26 3-13 Munroe sweeps left for 13 yards and 1st down.  
F39 1-10 Munroe gets four  
F43 2-6 Bailey on pitchout for three yards.  
F46 3-3 Cappleman pass complete to Tyson for 22 yards and 1st down.  
M32 1-10 Bailey sweeps right for ten yards and 1st down.  
M22 1-10 Bailey sweeps left for four yards.  
M18 2-6 Munroe gets four.  
M14 3-2 Cappleman keeps for three yards and 1st down.  
M11 1-10 Munroe gets one.  
M10 2-9 Munroe up middle for five yards.  
M5 3-4 Cappleman pass intended for Pederson incomplete  
M5 4-4 Carrell kick is not good on FG attempt.

MSU 4:12

M20 1-10 Reed keeps for one yard.  
M21 2-9 Smith pass complete to Dudley for 22 yards and 1st down.  
M43 1-10 Smithart gets nothing.  
M43 2-10 Whaley sweeps right for five yards.  
M48 3-5 Smith pass intended for Gossett incomplete.  
M48 4-5 Canale punts to Ashmore, fair catch on 21. 31 yard punt.

FSU 1:52

F21 1-10 Munroe no gain  
F21 2-10 Munroe loses five, FSU holding penalty declined.  
F16 3-16 Cappleman pass complete to ~~Rmax~~ Pederson for 20 yards and 1st down.  
F36 1-10 Miss. St. loses five--offsides  
F41 1-5 ~~xxx~~ Bailey loses six.

~~xxxx~~

end of quarter

MSU 14, FSU 13



# FOURTH QUARTER

FSU Ball

F35 2-11 Cappleman pass intended for Tyson incomplete.  
F35 3-11 Cappleman to pass loses eight.  
F27 4-19 Carrell punts dead on MS 47. 26 yard punt.

MSU 14:11

M47 1-10 Smith pass intended for Whaley incomplete  
M47 2-10 Smith pass intended for Milner incomplete. Broken up by Lanahan  
M47 3-10 Smith pass intended for Smithart incomplete  
M47 4-10 Canale punts 45 yards to Pell at eight. returns ten yards.

FSU 13:39

F18 1-10 Munroe gains three.  
F21 2-7 Cappleman pass complete to Tyson for nine yards and 1st down.  
F30 1-10 ~~for~~ Cappleman pass intended for Tyson incomplete  
F30 2-10 Munroe on draw picks ~~it~~ up seven.  
F37 3-3 Bailey gets one.  
F38 4-2 Carrell punts 45 yards to Canale on M17. No return.

MSU 11:26

M17 1-10 ~~Cappleman pass intended for Milner incomplete, but~~ Smith pass intedned for Milner incomplete, but interference gives MS 1st down at FSU 44.  
F44 1-10 Whaley gets seven.  
F37 2-3 Whaley gets four  
F33 1-10 Whaley on sweep gets 13 yards and 1st down.  
F20 1-10 Smithart no gain.  
F20 2-10 ~~Smithart~~ Patridge gains three.  
F17 3-7 Smith keeps for no gain.  
F17 4-7 Jordan 34 yard field goal is good. 83 yards/8 plays

MSU 17, FSU 13 8:05

~~xxxx~~ Wade kicks to Munroe on nine, returns to 30. 21 yards.

FSU 7:56

F30 1-10 Cappleman pass intended for Munroe incomplete  
F30 2-10 Bailey sweeps for four.  
F34 3-6 Cappleman pass complete to Tyson for 32 yards and 1st down.  
M34 1-10 Cappleman pass intended for G. Davis incomplete.  
M34 2-10 Munroe gains six  
M28 3-4 Munroe no gain  
M28 4-4 Cappleman pass complete to Zaffran for ~~incomplete~~ six yards. 1st  
M22 1-10 Munroe on halfback ~~to~~ pass complete to M Gray for 22 yards and TD.  
Carrell kick is good. 70 yards/8 plays

FSU 20, MSU 17 5:42

Hall kicks to Dudley on 12, returns 12 yards to 24

MSU 5:35

M24 1-10 Smith pass complete to Milner ~~xxxx~~ for six yards.  
M30 2-4 Smith pass complete to Dudley for 14 yards and 1st down.  
M44 1-10 Dudley gets three, but MS loses five for offsides.  
M39 1-15 Smith pass complete to Milner for two yard loss but FSU loses 15  
M48 1-10 Dudley for eight yards.  
F40 1-10 Smith pass intended for Milner incomplete  
F40 2-10 Smith loses seven by Wallace tackle. 3:21  
F47 3-17 Smith pass intended for ~~xxxx~~ Milner broken up by Rust.  
F47 4-17 Canale punts 36 yards, dies on FSU 11.

FSU 3:03

F11 1-10 Bailey churns for four.  
F15 2-6 Munroe gets one.  
F16 3-5 Cappleman pass complete to Tyson for 20 yards and 1st down.  
F36 1-10 Munroe gets two.  
F38 2-8 Cappleman loses six on keeper.  
F32 3-14 Munroe gets three.  
F35 4-11 FSU loses five--too much time. ~~at~~ 0:22  
F30 4-16 Whigham punts 42 yards to Smith returns seven.

MSU 0:17

M35 1-10 Smith sweeps for 12 0:4  
M47 1-10 Smith scrambles for ten yards as game ends.

FSU 20 MSU 17

LINE SCORE

	1	2	3	4	T
Mississippi State	7	7	0	3	17
Florida State	7	6	0	7	20

Scoring-

FSU- Bailey 34yd run (Carrell kick) 12:59 1st Period.

MSU- Smith 16yd pass from Reed (Jordan kick) 1:58 1st Period

FSU- Munroe 1yd run (kick failed) 13:12 2nd Period

MSU- Whaley 1yd run (Jordan kick) 8:17 2nd Period

MSU- Jordan 34 yd. FG 8:05 4th Period

FSU- Gray 22yd pass from Munroe (Carrell kick) 5:42 4th Period

Attendance: 33,011



# FLASH FOOTBALL STATS

Quick Halftime and After Game Reports of Vital Team Statistics and Individual Leaders  
(Approved Wire Services Form)

HALFTIME

Circle One

FINAL

## TEAM STATISTICS

	MISS STATE VISITORS	F.S.U. HOME TEAM
Score . . . . .	17	20
First Downs . . . . .	17	28
Rushing Yardage (Net) . . . . .	105	226
Passing Yardage (Net) . . . . .	144	258
*Return Yardage (Net) . . . . .	74	25
Passes (Compl'd - Att'd - Had Int'd) . . . . .	16 - 28 - 1	18 - 31 - 1
Punts (Number - Average) . . . . .	6 - 41.2	6 - 39.8
Fumbles Lost . . . . .	0	1
Yards Penalized . . . . .	31	128

\*Return of Punts, Intercepted Passes and Fumbles (not kickoffs).

## INDIVIDUAL LEADERS

MISS. STATE VISITORS				
RUSHING	Att'd	Net Yards	For TD	Long Gain
REED	3	30	-	30
DUDLEY	7	23	-	8
SMITHART	8	6	-	4
PASSING	Att-Compl-Int.	Yds.	For TD	
REED	15-11-1	100	1	
SMITH	12-5-0	44	0	
PASS RECEIVING	No.	Yards	For TD	
PATRIDGE	1	17	0	
MILNER	5	55	0	
DUDLEY	2	36	0	
SMITH	2	29	1	
PUNTING	No.	Avg.	Long Gain	
CANALE	6	41.2	46	

F.S.U. HOME TEAM				
RUSHING	Att'd	Net Yards	For TD	Long Gain
BAILEY	19	131	1	34
MUNROE	25	103	1	15
CAPPLEMAN	9	-4	-	14
PASSING	Att-Compl-Int.	Yds.	For TD	
CAPPLEMAN	30-17-1	236	0	
MUNROE	1-1-0	22	1	
PASS RECEIVING	No.	Yards	For TD	
TYSON	10	167	0	
BAILEY	1	8	0	
MUNROE	1	12	0	
GRAY	2	29	1	
PUNTING	No.	Avg.	Long Gain	
CARREL	5	39.4	52	
WHIGHAM	1	42	42	

FSU vs. MISS. STATE 10-25, 1969

FINAL TEAM FOOTBALL STATISTICS

	<u>FSU</u>	<u>MISS STATE</u>
First Downs Rushing . . . . .	13	7
First Downs Passing . . . . .	14	7
First Downs by Penalties . . . . .	1	3
TOTAL FIRST DOWNS . . . . .	28	17
Number Attempts Rushing . . . . .	55	32
Yards Gained Rushing . . . . .	269	122
Yards Lost Rushing . . . . .	43	17
NET YARDS GAINED RUSHING . . . . .	226	105
Number Passes Attempted . . . . .	31	28
Number Passes Completed . . . . .	18	16
Number Passes Had Intercepted . . . . .	1	1
NET YARDS GAINED PASSING . . . . .	258	144
Number Plays Rushing and Passing . . . . .	86	60
TOTAL OFFENSE YARDAGE . . . . .	484	249
Number Opponents Passes Intercepted . . . . .	1	1
NET YARDS INTERCEPTIONS RETURNED . . . . .	0	22
Number Times Punted . . . . .	6	6
Number Punts Had Blocked . . . . .	0	0
PUNTING AVERAGE, YARDS . . . . .	39.8	41.2
Number Punts Returned . . . . .	2	2
NET YARDS PUNTS RETURNED . . . . .	25	52
Number Kickoffs Returned . . . . .	4	3
NET YARDS KICKOFFS RETURNED . . . . .	74	66
Number Times Penalized . . . . .	10	4
TOTAL YARDS PENALIZED . . . . .	128	31
Number Times Fumbled . . . . .	1	0
NUMBER OWN FUMBLES LOST . . . . .	1	0
<u>FSU</u> . . . . .	7	6
<u>MISS. STATE</u> . . . . .	7	7
	0	0
	7	20
	3	17

Scoring:

Attendance: 33,011 Weather: 64° NNE 5-10 MPH



## FINAL INDIVIDUAL FOOTBALL STATISTICS

MISS. STATE

VISITORS

RUSHING	Avg	Net Yards	For TD	Long Gain
REED	3	30	—	30
WHALEY	8	25	100	13
DUDLEY	7	23	—	8
SMITHART	8	6	—	4
PATRIDGE	2	6	—	3
SMITH	4	15	—	12

TOTALS

PASSING	Att-Comp-Int.	Yards	For TD	Long Gain
REED	15-11-1	100	1	40
SMITH	12-5-0	44	—	22
PATRIDGE	1-0-0	0	—	—

TOTALS

PASS RECEIVING	No.	Yds.	For TD	Long Gain
PATRIDGE	1	17	0	17
MILNER	5	55	0	40
SMITHART	3	10	0	9
WHALEY	3	—3	0	4
DUDLEY	2	36	0	22
SMITH	2	29	1	16

TOTALS

PUNTING	No.	Yards	Avg.	Long Gain
CANALE	6	247	41.2	46

TOTALS

ALL RETURNING	Punts No.	Yds.	Kickoffs No.	Yds.	Inter's No.	Yds.
SMITH	2	52	—	—	—	—
CRICK	—	—	—	—	1	22
PATRIDGE	—	—	1	22	—	—
DUDLEY	—	—	2	44	—	—

TOTALS

FSU

HOME TEAM

RUSHING	Avg	Net Yards	For TD	Long Gain
CAPPLEMAN	9	—4	—	14
BAILEY	19	131	1	34
MUNROE	25	103	1	15
JARRETT	1	—1	—	—
GRAY	1	—3	—	—

TOTALS

PASSING	Att-Comp-Int.	Yards	For TD	Long Gain
CAPPLEMAN	30-17-1	236	—	32
MUNROE	1-1-0	22	1	22

TOTALS

PASS RECEIVING	No.	Yds.	For TD	Long Gain
BAILEY	1	8	0	8
TYSON	10	167	0	32
PEDERSON	2	27	0	20
ZAPPERAN	1	6	0	6
MUNROE	1	12	0	—
DAVIS, G.	1	9	0	—
GRAY	2	29	1	—

TOTALS

PUNTING	No.	Yards	Avg.	Long Gain
CARREL	5	197	39.4	52
WHIGHAM	1	42	42	42

TOTALS

ALL RETURNING	Punts No.	Yds.	Kickoffs No.	Yds.	Inter's No.	Yds.
ABRAIRA	—	—	2	40	—	—
GRAY	—	—	1	13	—	—
MUNROE	—	—	1	21	—	—
PELL	2	25	—	—	—	—
RICE	—	—	—	—	1	0

TOTALS

Quotes from Miss. State Coach Charley Shira —

When asked if there was a turning point, Shira said, "There were several big plays in the game, but FSU's last TD turned out to be the turning point."

Speaking of the winning score, he said, "They (FSU) chose a wise time to use the halfback pass. Our scouting report showed they had thrown this pass before, but FSU was in good position since they were ~~in~~ had used the sweep."

"Bill Capleman called a real smart game. He's a real good one, that's for sure."

(Joe Reed hurt his ankle. It was not known how severe the injury was.)

"David Smith performed well when he replaced Reed, but it hurt us having to take him out of his end slot, leaving Sammy Milner as our main target."

"It was a big let down when we did not score after the 92-yard drive."