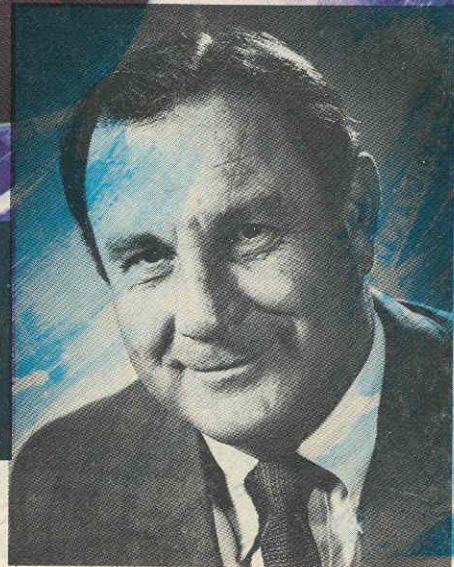


**THE  
COLLEGE  
GAME**®



# Florida **STATE / WAKE FOREST**

**Football Magazine**

75 CENTS - : - September 26, 1970



# TONIGHT'S GAME

By Lonnie Burt

Sports Information Director

After a year's layoff, Atlantic Coast Conference Wake Forest and independent Florida State get back together on the gridiron. In eight previous meetings, the Seminoles own a 6-1-1 edge.

Coach Cal Stoll was hired before the 1969 season to straighten out the Deacons' football fortunes. In his campaign, Stoll directed the Deacs to a 3-7 record including a 22-21 upset over ACC rival North Carolina State.

Wake Forest expected to have a green offensive team and an experienced defensive outfit this year. However, lack of depth has hurt the defense, especially in their 43-7 loss to South Carolina last Saturday night.

Wake Forest trailed 10-7 at halftime before the Gamecock legions applied the pressure. Six turnovers — three fumbles and three interceptions by South Carolina — in the final 30 minutes made the Deacons' struggle impossible.

In junior college transfer Larry Hopkins, Wake Forest has one of the ACC's better runners. The 203-pound fullback had a 61-yard touchdown run last Saturday night.

Sophomore Jim McMahan and junior Larry Russell have been sharing the Deacons' quarterback duties. Russell has started both Wake Forest games and is a threat as a runner while McMahan is the stronger passer.

Defensively, tackle Win Headley, 6-3, 240 pounds, is an All-America candidate and in two games has 12 tackles and 11 assists.

Prior to the South Carolina contest, Wake Forest bowed to mighty Nebraska 36-12 in its opener.

Florida State will be trying to bounce back from its 23-13 loss to Georgia Tech last week. And at the same time, the Seminoles will be starting a new quarterback in junior Frank Whigham.

Whigham entered the Tech game in the first quarter and wound up with 10 pass completions in 25 attempts. These were good for 201 yards and one touchdown. The Sanford native also showed talent as a runner, racing for 62 yards in six carries.

Wake's only victory over Florida State came in 1958 when the Deacons claimed a 27-24 triumph. The series tie came in 1956, the teams' first meeting which ended in a 14-14 standoff.

## 1970 FLORIDA STATE SCHEDULE

9 Louisville 7  
13 Georgia Tech 23  
Sept. 26 Wake Forest  
Oct. 3 Open  
Oct. 10 Florida  
Oct. 17 @ Memphis State  
Oct. 24 @ South Carolina  
Oct. 30 @ Miami  
Nov. 7 Clemson  
Nov. 14 Virginia Tech (HC)  
Nov. 21 Kansas State  
Nov. 26 Houston (@ Tampa)

## 1970 WAKE FOREST SCHEDULE

12 Nebraska 36  
7 South Carolina 43  
Sept. 26 Florida State  
Oct. 3 at Virginia  
Oct. 10 Virginia Tech  
Oct. 17 Clemson  
Oct. 24 North Carolina  
Oct. 31 at Tennessee  
Nov. 7 at Duke  
Nov. 14 N. C. State  
Nov. 21 at Houston

## — NEXT WEEK —

The Florida State varsity has an off week, but there will be plenty of action in Campbell Stadium as the Seminole freshman team opens its schedule against the Baby Yellow Jackets of Georgia Tech. Kickoff for the Saturday contest is slated for 7:30 p.m. The varsity swings back into action Oct. 10 when rival Florida comes to town for the annual intra-state battle. The first of three afternoon contests, kickoff for the Florida game is 2 p.m.

For All Your Photo Needs

Camera's

Film

Darkroom Equipment

Binoculars

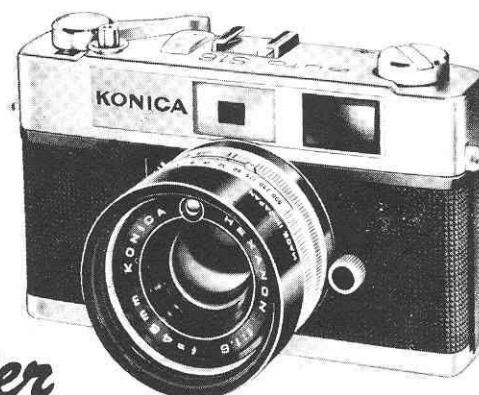
Recorders

Rentals

See The Friendly Folks At

# Tallahassee Camera Center

117 NORTH MONROE



# There's fun for everyone at florida state

By Celia Ansley  
Office of Information Services

Florida State University would like to help put to rest the old myth that "there is nothing to do in Tallahassee."

Aside from the football games which draw thousands of people to town on Saturdays throughout the Fall, there is usually a full calendar of University-sponsored events ranging from lectures and drama to opera, art, jazz and rock concerts.

The fall quarter events calendar has representatives of a number of such annual favorites as the Artist Series, Seminole Spotlight Series, University Lecture Series, Theater and Opera Guild productions, Faculty Recitals and the Madrigal Christmas Dinners.

This season the University Art Gallery in the Fine Arts Building will have new exhibits on a monthly basis, with both professional and student works being featured; and the School of Music is offering several new adult enrichment courses, including a lecture series and piano lessons.

In addition to major productions, some type of music is performed every week on campus often with as many as two or three concerts from which to select. The Studio Theater presents plays of an experimental nature, often using student, rather than faculty, directors.

The Artist Series brings to campus some of the best professional entertainment available today. The 1970-71 Series will include such renowned performers as Metropolitan Opera Star Marilyn Horne and Dame Judith Anderson as "Hamlet." Two leading American orchestras—the Detroit Symphony Orchestra and the Minnesota Symphony—will appear, as will the classic jazz group, The New Orleans Preservation Hall Jazz Band. Musical comedy will be represented in a roadshow performance of the lively Broadway hit, "Zorba" with drama represented by Shaw's "Candida" to be presented by the Asolo State Theater of Florida. An evening of dance will be performed by the American Ballet Theater.

During the fall quarter, Miss Horne will appear on Oct. 29; "Zorba" will be presented on Nov. 18; and the New Orleans Preservation Jazz Hall Band will perform on Nov. 24.

All Artist Series programs are at 8:15 p.m. in Ruby Diamond Auditorium (formerly Westcott.)

General public season tickets for all eight productions are available for \$25 at the University Union Ticket Office, or by mail, through Oct. 15. Student season tickets are \$8 and student spouse tickets, \$12.50.

A variety of quality drama by the University Theater will have something to offer for the whole family.

Highlighting the 1970-71 theater season will be five "Main Stage" productions. The opening show, Oct. 16-24, will be the hit 1950's musical "Guys and Dolls," produced in conjunction with the School of Music and Opera Guild. The avant garde "Rosencrantz and Guildenstern are Dead," which is based on Shakespeare's "Hamlet," will follow on Nov. 12-15.

The Annual Children's Show will be that classic tale for youngsters, "Peter Pan." Two plays will be premiered by "Main Stage" during the year. One, by Joseph Hayes, will headline the 1971 Fine Arts Festival, and another by FSU playwright-in-residence Frank Gagliano will be presented in late spring.

Season tickets for the five shows are \$10.95 for the general public and \$6.95 for students. They may be purchased at the University Union Ticket Office or by mail through the Department of Theater.

Main Stage productions are held in the Fine Arts Building Theater with curtain time at 8:15 p.m. Studio Theater shows, which this year

will feature a series of plays by Gagliano, are at 8:15 p.m. in Conradi Theater. Tickets for these shows are available at the box office prior to each performance.

The University Lecture Series brings to campus experts on subjects ranging in scope from government to the arts. The lectures, which are held at 8 p.m. in Diamond Auditorium, are free and open to area residents as well as University students and personnel.

The lineup for the academic year includes Dr. Robert Weaver, former Secretary of HUD on Oct. 6; Dr. Barry Commoner, an expert on environmental problems, on Nov. 10; the Rev. Jesse Jackson, Southern Christian Leadership Conference, on Nov. 19; Kenneth Tynan, leading British theater critic and expert on op art, on Feb. 9; Julian Bond, an expert on Black Politics, on Apr. 15; and Dr. John Kenneth Galbraith, whose field is the economy, on May 11.

The Art Gallery will offer everything from ancient artifacts to modern art with exhibits featuring professional talent in the upper gallery and student works in the lower. Among the Gallery's offerings will be the opening show in October featuring selected works from FSU's permanent art collection, in the upper gallery; and in the lower gallery, a photography display of works by students of Evon Streetman.

In November the upper gallery will show works by faculty artists from various Florida universities and junior colleges, while the December exhibit will be devoted to art appropriate to the holiday season.

The gallery is open from 10 a.m. to 4 p.m., Monday through Friday, and from 1 p.m. to 4 p.m. on weekends. It is closed during academic holidays, and there is no admission cost at any time.

Throughout the year Stroz Library's Undergraduate Division sponsors a Library Lecture Series presenting authors from among the FSU faculty. Lectures are held monthly on a Wednesday at 3 p.m. The lectures are free and area residents are invited to attend along with members of the University community.

The School of Music will offer two new programs this fall, in addition to such traditional favorites as the Faculty Recital Series, the Women's Glee Club Christmas Vespers, the Choral Union Concert in December and the University Symphony Concert in November.

"Music in Our Changing World" will provide the theme for the Music Lecture Series, to be held 10 consecutive Monday nights beginning Sept. 28 at 7:30 p.m. Led by prominent members of the music faculty, the series is designed to help participants gain a new perspective on the contemporary trends and future prospects of music in our rapidly changing society. The \$7.50 registration fee is payable during the first class session, in Room 205 of the Music Building.

"Piano for Pleasure," designed for adults with little or no piano background, will be offered as a 10 week course starting Sept. 29 at 7:30 p.m. Dr. Jack Swartz, who will conduct the class, said it can also be taken as a refresher course for those who have been away from the keyboard since childhood. Simple piano literature will be used with an emphasis on popular music. The \$50 tuition fee is payable at the first session in the Music Building.

Ending the quarter on a merry note will be the Annual Christmas Madrigal dinners, sponsored jointly by the School of Music, the University Food Services and the University Union. Dates for the old English Style holiday event are Nov. 29-30, Dec. 1-2 and 4-7.

Further information about the Dinners, which are at 6:30 p.m. in the Union Ballrooms, will be announced later in the quarter.

So come join us at Florida State where there is always something going on.

# events in preview.....



**MUSIC** — The combined choral forces of the School of Music join the State Symphony of Florida in concert. The FSU School of Music is the home of the State Symphony and the State Opera Association, with the organizations' members coming from the faculty and student ranks.



**OPERA** — The Florida State University Opera Guild annually presents two or three quality productions ranging from grand opera to lighter or romantic operas or musical comedy. This season the Guild will work with the Theater to produce "Guys and Dolls," the hit musical from the '50's. The Opera Guild will produce Carlisle Floyd's opera "Of Mice and Men" as the highlight of the 1971 Fine Arts Festival in February. The scene shown is from the opera

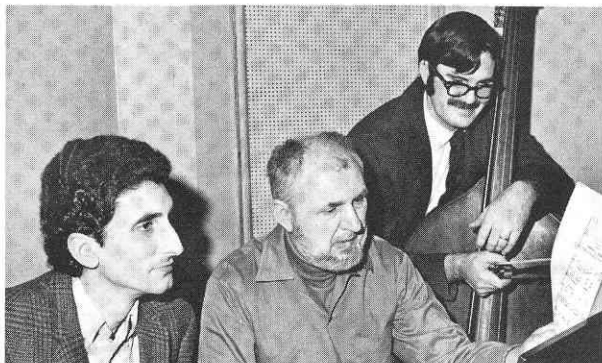


"Amelia Goes to the Ball," which was presented during the 1970 Fine Arts Festival.

**LECTURES** — Former Ambassador to the United Nations Arthur Goldberg, right, was among the speakers featured during the 1969-70 Lecture series. Here he is greeted by FSU government professor Elston Rody. The series is designed to bring to campus persons knowledgeable in a wide variety of subjects ranging from government to the arts.



**ARTIST SERIES** — The hit Broadway musical "Zorba" will be a highlight of the 1970-71 Artist Series. The lusty show, based on the novel "Zorba the Greek," is highlighted by energetic Greek songs and dances and reflects the fierce joys and harsh sorrows of life in Greece today. It will be presented on Nov. 18.



**FACULTY RECITALS** — The School of Music Annually presents a series of recitals featuring the many talents of its faculty. Here Mario Abril, John Boda and Victor Ellsworth rehearse for a joint program they presented last season.

**BAND** — The Marching Chiefs provide color and atmosphere at all Florida State home football games and band members are on hand to musically boost FSU's basketball team. After the football season the Chiefs disband and regroup as several different concert organizations which perform during winter and spring quarters.







#### 1970 FRESHMAN FOOTBALL ROSTER

Name	Ht.	Wt.	Hometown
29 Abbott, Tommy	6-2	190	West Palm Beach
62 Arnold, Phil	6-0	210	Hollywood
52 Biles, Bayless	6-0	205	Bay Minette, Ala.
35 Burgess, Bobby	6-2	200	Decatur, Ga.
75 Burton, Albert	6-5	245	Daytona Beach
69 Carter, Jerry	5-11	180	Jacksonville
88 Castleberry, Rusty	6-0	200	Palatka
40 Cowart, Sam	6-0	170	Lithia
15 Dowey, Mark	6-0	190	Mobile, Ala.
41 Downey, Joe	6-1	194	Mobile, Ala.
68 Drews, John	5-11	185	Hollywood
21 Eddy, David	6-0	185	Miami
72 Fouraker, Earl	6-5	210	Bryceville
11 Geisler, Fred	6-1	190	Orlando
27 Goldsmith, Joe	6-0	180	Lakeland
22 Gould, George	6-0	170	Tallahassee
46 Green, Bob	6-0	170	Miami
71 Hensley, Jimbo	6-3	215	Orlando
65 Hogue, Dennis	6-1	205	Smyrna, Ga.
19 Hopkins, Dick	6-2	190	West Palm Beach
89 Howard, Jim	6-5	210	Jacksonville
57 Howton, Darrell	6-0	185	Tampa
31 Hunter, Mike	5-11	190	Lake City
86 Jones, Ralph	6-1	175	Cairo, Ga.
32 Kelley, Allan	6-0	190	Ozark, Ala.
63 Lawhorne, Steve	6-1	200	Albany, Ga.
80 Lee, Johnny	6-4	215	Eastman, Ga.
24 Lewis, Buzzy	6-1	177	Bristol
28 Lindsey, Walt	6-2	185	Bay Minette, Ala.
67 Lingerfelt, Ron	6-0	190	Tallahassee
20 Loucks, Gary	6-2	195	Merritt Island
85 Lucas, Carl	5-11	180	Jupiter
74 Macaulay, Steve	6-1	210	Atlanta, Ga.
56 Miles, David	5-10	185	Tallahassee
83 Murphy, John	5-11	185	Albany, Ga.
84 O'steen, Wyant	6-0	180	Mayo
51 Ottman, Keith	6-1	200	Vero Beach
82 Rooks, Scott	6-2	195	Jacksonville
26 Sanders, Jerry	6-2	188	Adel, Ga.
12 Satterfield, Ricky	6-4	210	Jonesboro, Ga.
53 Schmidt, Andy	6-1	200	Brandon
70 Sparkman, Don	6-5	225	Jacksonville
48 Sparling, George	6-1	185	Boca Raton
58 Strauss, Ted	5-10	190	Tallahassee
44 Walter, Steve	6-2	202	Jacksonville
43 Webb, Tom	5-10	185	St. Augustine
61 Wilkinson, John	6-0	210	Cassleberry
64 Wimberly, Terry	6-2	200	Jacksonville
73 Wood, Barry	6-2	215	Smyrna, Ga.
Mitchell, Mark	6-0	180	Auburn, Ala.

## 1970 Florida State Freshman Football

The 1970 Florida State freshman team takes over the spotlight next week with its season opener against the Georgia Tech freshman in Campbell Stadium.

The Seminoles of tomorrow are directed by first year mentor Don Blackwelder and it appears there will be a good deal of aerial action during the freshman season.

Among the many standouts on this year's freshman club are quarterback Fred Geisler from Orlando and receiver Joe Goldsmith from Lakeland.

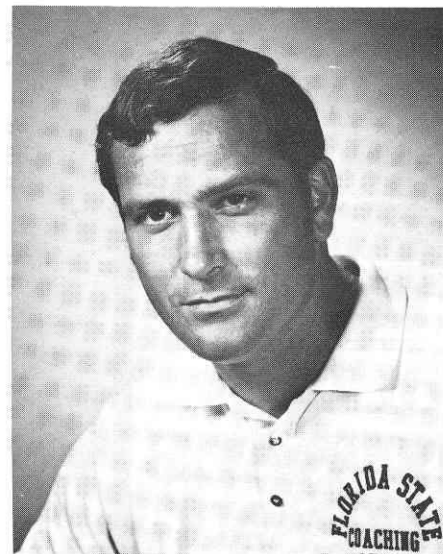
Although a good deal of the freshman's time has been spent working with the varsity, Blackwelder has seen enough to feel he has a top group gathered.

Kickoff for Saturday's contest is slated for 7:30 p.m.

Tickets will be available all this week at the Athletic Ticket Offices in Tully Gym. Admission for adults will be \$2 and 50-cents for children. Florida State students will be admitted free upon showing their student ID card.

#### 1970 FRESHMAN FOOTBALL SCHEDULE

Date	Opponent	Site	Time
Oct. 3	GEORGIA TECH	Tallahassee	7:30 p.m.
Oct. 31	GORDON MILITARY	Moultrie, Ga.	7:30 p.m.
Nov. 7	MIAMI	Vero Beach	8:00 p.m.
Nov. 20	FLORIDA	Gainesville	2:00 p.m.



**Don Blackwelder**  
Freshman Coach

# YESTERDAY

A WINNING TRADITION ESTABLISHED

Florida State's modern football history resumed in 1947, when the Seminoles quickly formed a team and a schedule. The result was, as could be expected, an agonizing 0-5 record.

But the Tribe was not to be down for long. The 1948 season brought a new coach, a new conference and the Seminoles first win.

Don Veller was the new coach. He came to the Seminoles from Indiana University, where he was an outstanding scholar-athlete, during the mid-thirties.

He brought with him the "cockeyed-T" first introduced by his former coach and then boss at Indiana, Bo McMillan. In addition Veller had added a few new wrinkles, like an unbalanced line.

The Seminoles' first opponent in 1948 was Cumberland University. The visitors certainly were not a national power, but they presented a formidable opening opponent, one which had beaten the Tribe, 6-0, a year before.

Veller had the Seminoles ready, however. While the defense kept Cumberland scoreless the "cockeyed-T" rolled up five touchdowns, for a 30-0 win.

Red Parrish and Ken MacLean set the pace for a devastating Tribe ground assault that netted 426 yards.

Each scored twice, leaving the final touchdown to reserve back Ernie Reddick.

A 31-yard dash by MacLean put the Tribe on the board. Later he sprinted 52-yards setting up a Parrish plunge for a score.

Parrish also showed speed by driving 60-yards for a touchdown.

The Seminoles missed all five extra point attempts in the Cumberland game and one more in a 14-6 loss to Erskine the following week running their two-year famine to nine. But that string stopped against Millsaps when Joe Crona kicked the winning point in a 7-6 victory.

Although the Seminoles lost their second outing, that "first ever" victory set the pace for the season. The Millsaps win started a six game streak as the Tribe finished up 7-1 and captured the first "Dixie Conference" title with a 4-0 mark.

## GARNET - GOLD

WEAR YOUR COLORS PROUD

BLAZER



\$60.00

Garnet or Gold Blazer of Dac-Wool blend for year round comfort. Sizes; Reg: 36-48, Shorts: 36-42, Longs 38-50, XL 40-48.

## SAMMY SEMINOLE TIE



Tie one on! A garnet background with the authentic Sammy Seminole Monogram on the tie.

\$4.50

NAME: \_\_\_\_\_  
ADDRESS: \_\_\_\_\_  
CITY: \_\_\_\_\_  
COLOR: \_\_\_\_\_ SIZE: \_\_\_\_\_  
TIE ONLY: \_\_\_\_\_

## NIC'S TOGGERY

115 S. Monroe St.  
Tallahassee, Florida

# FLORIDA STATE

1969						
NO.	NAME	POS.	CLASS	HT.	WT.	STATUS HOMETOWN
75	AMMAN, RICHARD	DT	Jr.	6-6	234	1VL Cocoa Beach
28	ASHMORE, ROBERT	DB	Jr.	6-0	189	1VL Tallahassee
30	BAILEY, TOM	RB	Sr.	6-2	215	2VL Coral Gables
62	BASS, THERON	LB	Sr.	5-11	200	2VL Live Oak
46	BENGTON, BRIAN	PK	Soph.	6-3	204	Squad Green Bay, Wis.
68	BEVILLE, STEVE	C	Jr.	6-2	215	1VL Fernandina Beach
57	CARDEN, ROBERT	C	Soph.	6-3	238	Frost Edgewater
3	CARRELL, DUANE	P-PK	Jr.	5-11	171	1VL Washington, D.C.
82	DAWSON, RHETT	WR	Jr.	6-1	185	1VL Valdosta, Ga.
55	DEES, ALLEN	C	Soph.	6-2	195	RS Lakeland
61	ESSEX, JOHN	OT	Soph.	6-2	236	Squad Miami
11	FONTES, FRANK	PK	Jr.	5-6	155	JC Perth Ampoy, N.J.
14	FOREY, DAN	QB	Jr.	6-5	205	JC Denver, Colo.
10	GAYDOS, KENT	WR	Jr.	6-6	209	1VL Dallas, Tex.
72	GIBBS, SHANE	OT	Soph.	6-3	209	Frosh Bay Minette, Ala.
58	GILDEA, STEVE	LB	Sr.	6-0	194	2VL Daytona Beach
54	GLASS, MIKE	LB	Soph.	6-3	203	RS Tampa
49	GLISSON, GUY	LB	Jr.	6-0	205	1VL Tampa
35	GRAY, MIKE	WR	Sr.	6-3	200	2VL Lake Mary
44	GRIDLEY, BUDDY	DB	Jr.	5-11	203	1VL Tallahassee
86	HALL, RANDY	DE	Sr.	6-0	207	2VL Miami
47	HARRIS, CHIP	RB-P	Jr.	6-0	205	JC Live Oak
70	HENSON, BILL	DT	Jr.	6-1	230	JC Hyattsville, Md.
51	HOWELL, BOBBY	LB	Soph.	6-0	215	Frosh Decatur, Ga.
19	HUFF, GARY	QB	Soph.	6-1	185	Frosh Tampa
80	HUNT, CHARLIE	DE	Soph.	6-4	202	Frosh Jacksonville
48	JARRETT, JAMES	FB	Jr.	6-2	202	1VL Elizabethton, Tenn.
24	LANAHAN, JOHN	FB	Jr.	6-0	197	1VL Jacksonville
56	LOHSE, BILL	LB	Sr.	6-1	228	1VL St. Petersburg
74	McEACHERN, ROBERT	DT	Sr.	6-2	234	2VL Tallahassee
65	McKINNIE, J.W.	OG	Jr.	6-2	210	1VL Macon, Ga.
40	McMILLAN, EDDIE	DB	Soph.	6-2	172	Frosh Tampa
31	MAGALSKI, PAUL	FB	Jr.	5-11	208	1VL Garfield Hts. Ohio
77	MINOR, ROGER	OT	Soph.	6-3	242	RS Delray Beach
63	MONTGOMERY, GEORGE	OG	Jr.	6-2	229	1VL Coral Gables
43	MONTGOMERY, JOHN	DB	Jr.	6-1	193	1VL Jacksonville
27	MUNROE, ARTHUR	RB	Jr.	6-1	186	1VL Quincy
64	MUSSER, CHARLEY	OG	Soph.	6-1	215	Frosh Graceville
36	OREAIR RICK	RB	Soph.	6-1	190	Frosh Jacksonville
33	PARKER, CLINT	LB	Soph.	6-2	190	Frosh Daytona Beach
84	PARRIS, GARY	TE	Soph.	6-3	220	Frosh Vero Beach
23	PEDERSON, DON	WR	Sr.	6-1	184	2VL Groveland
42	RATLIFF, RON	DB	Soph.	6-0	183	Squad West Palm Beach
60	RICE, BARRY	LB	Sr.	6-2	210	2VL Fernandina Beach
88	RICE, BERYL	DE	Sr.	6-1	204	2VL Fernandina Beach
76	RIMBY, BILL	OT	Jr.	6-4	224	1VL St. Petersburg
29	RUST, BENNY	DB	Jr.	6-0	193	1VL Miami
67	SAMMONS, MIKE	OG	Jr.	6-1	210	1VL Atlanta, Ga.
85	SHAW, BILL	DE	Jr.	6-2	215	1VL Marietta, Ga.
16	SHIVELY, RANDY	QB	Soph.	6-0	164	Frosh St. Petersburg
22	SMITH, BARRY	WR	Soph.	6-0	184	Frosh Miami
20	SNELL, DAVID	DB	Soph.	5-8	175	Frosh Slocumb, Ala.
52	SOWERS, CRAIG	C	Soph.	6-4	231	RS Ft. Lauderdale
53	STOKES, JAY	OG	Jr.	6-4	229	1VL Sanford
59	STRICKLAND, LARRY	DT	Soph.	6-1	220	RS Tallahassee
66	STRICKLER, JOE	OT	Jr.	6-2	235	1VL Avon Park
26	THOMAS, JAMES	DB	Soph.	6-1	188	Frosh Macon, Ga.
81	TYSON, JIM	TE	Sr.	6-1	213	2VL Pahokee
83	WALLACE, RON	DE	Sr.	6-2	187	2VL Macon, Ga.
15	WARREN, TOMMY	QB	Sr.	5-11	169	2VL Coral Gables
12	WHIGHAM, FRANK	QB	Jr.	6-0	184	Squad Sanford
69	WHITE, TOM	DT	Sr.	6-0	225	1VL West Palm Beach
50	WHITEHURST, DAN	LB	Soph.	6-4	215	RS Adel, Ga.
87	ZAFFRAN, TED	TE	Jr.	6-3	190	1VL Orlando



• CABLE COLOR TV IN ALL ROOMS  
RECEIVING NINE CHANNELS

• POOL

• AIR CONDITIONED

• DIRECT DIAL PHONES

• Se habla Espanol

AMERICAN EXPRESS - DINERS - AMERICAN OIL  
PHILLIPS 66 - BANKAMERICARD  
MASTER CHARGE - CARTE BLANCHE

## DRIFTWOOD MOTEL and RESTAURANT

Cocktails — Banquet Room

• Northwest corner of Campus  
on U.S. 90; Fla. 20 West

1402 W. TENN. (U.S. 90)  
(904) 224-4174

# WAKE FOREST

No.	Name	Pos.	Class	Hgt.	Wgt.	Hometown
23	ARCARO, NICK	DB	Soph.	5-11	185	Princeton, N. J.
71	BENNETT, TERRY	DT	Jr.	6-1	215	McDonald, Pa.
69	*BOBBORA, BILL	OG	Jr.	6-1	215	Chicago, Ill.
16	BOWDEN, JOEL	DB	Sr.	6-1	190	Liberty, N. C.
35	*BOWDEN, STEVE	RB	Jr.	6-1	186	Liberty, N.C.
12	*BOZOIAN, DICK	DB	Sr.	6-0	195	Manchester, N. H.
56	*BRADLEY, ED	LB	Jr.	6-2	225	Stratford, Conn.
57	BROWN, DON	LB	Soph.	5-11	190	Butler, Pa.
22	CAMPBELL, TOMMY	RB	Sr.	5-11	185	Luray, Virginia
41	*CAUSEY, LARRY	LB	Jr.	5-10	200	Greensboro, N. C.
79	CAYWOOD, JAMES	DT	Soph.	5-11	198	Rockville, Maryland
76	CHULADA, DICK	DT	Jr.	6-5	250	Wilkes-Barre, Pa.
51	COX, RANDY	C	Soph.	6-2	200	Monroe, N. C.
87	DODA, DAVE	TE	Sr.	6-2	195	Franklin Lakes, N. J.
14	FUSSELL, FRANK	DB	Jr.	5-10	180	Burgaw, N. C.
40	GARRETT, KEN	RB	Soph.	6-2	200	Fayetteville, N. C.
50	GERMAN, GARY	C	Soph.	6-4	210	Kettering, Ohio
80	GODFREY, NEIL	DE	Soph.	6-5	205	Sanford, N. C.
59	GRUNDIES, DAVE	OT	Soph.	6-3	210	Newark, Ohio
75	*HEADLEY, WIN	DT	Sr.	6-3	239	Westport, Conn.
8	HOGAN, STEVE	FB	Soph.	6-1	195	Burlington, N. C.
20	HOLT, PHIL	RB	Jr.	6-1	180	Hazel Crest, Illinois
44	HOPKINS, LARRY	FB	Jr.	5-10	190	Panama City, Fla.
43	HOWLETTE, MIKE	SE	Soph.	6-1	185	Richmond, Virginia
36	JAKUBOVIC, ERNIE	DB	Soph.	6-2	190	West Mifflin, Pa.
32	JOHNSON, GARY	RB	Jr.	6-2	200	Shiocton, Wisconsin
70	KOCH, CALVIN	DT	Soph.	6-0	215	Wayne, New Jersey
72	KOMONDOR, STEVE	DT	Jr.	6-1	225	Chicago, Illinois
15	*KUCHARCHEK, TERRY	DB	Sr.	6-1	190	Tire Hill, Pa.
24	LINDSAY, DAVE	DB	Soph.	6-1	180	Fairfield, Conn.
77	LOGAN, ARCHIE	DT	Sr.	6-2	220	Reidsville, N. C.
86	*LOUNSBURY, TRACY	K	Jr.	6-1	185	Winston-Salem, N. C.
63	*MAGNOT, MIKE	DT	Sr.	6-1	215	Peckville, Pa.
73	MANGIARACINA, TONY	OG	Soph.	6-2	200	Bristol, Pa.
65	MARTIN, TOM	OG	Jr.	6-1	205	Verona, Pa.
21	McCOY, GARY	SE	Soph.	6-0	170	Aliquippa, Pa.
78	*McGOWAN, GERRY	OT	Sr.	6-5	225	Dedham, Mass.
34	*McHENRY, PAT	DB	Jr.	6-0	175	Altoona, Pa.
7	McMAHEN, JIM	QB	Soph.	6-2	175	Chicago, Ill.
89	MELLON, JOHN	SE	Soph.	6-3	200	Bethpage, New York
11	MOORE, JUNIOR	RB	Soph.	5-11	175	Wheeling, W. Va.
61	*NEDIMYER, VINCE	OT	Sr.	6-0	220	Altoona, Pa.
55	*PATE, CARLYLE	LB	Sr.	6-1	215	Burlington, N. C.
83	PHILLIPS, JOHN	DT	Soph.	6-3	220	Levittown, Pa.
74	POPE, JIM	LB	Jr.	6-1	205	Weldon, N.C.
95	ROTHROCK, SAMMY	DB	Soph.	6-1	185	Enfield, N. C.
5	*RUSSELL, LARRY	QB	Jr.	5-11	185	Newburyport, Mass.
10	RYAN, JAMES	QB	Soph.	6-0	185	Levittown, Pa.
62	SPENCOR, MIKE	C	Jr.	6-3	200	Naperville, Ill.
52	*STETZ, ED	LB	Jr.	5-11	195	Johnstown, Pa.
88	TEAGUE, CHRIS	DE	Soph.	6-1	210	Roxboro, N. C.
84	*THERIAULT, JOE	OT	Sr.	6-4	250	Nashua, N. H.
53	*VRHOVAC, NICK	C	Jr.	6-3	230	Brownsville, Pa.
64	*WAITE, TED	OG	Jr.	6-2	220	Canton, Mass.
82	*WINROW, GARY	TE	Sr.	6-1	200	Naperville, Ill.

\*Letterman

## FLORIDA STATE

3 Carrell, Duane—P-PK  
11 Fontes, Frank—PK  
12 Whigham, Frank—QB  
14 Forey, Dan—QB  
15 Warren, Tommy—QB  
16 Shively, Randy—QB  
18 Gaydos, Kent—WR  
19 Huff, Gary—QB  
20 Snell, David—DB  
22 Smith, Barry—WR  
23 Pederson, Don—WR  
24 Lanahan, John—FB  
26 Thomas, James—DB  
27 Munroe, Arthur—RB  
28 Ashmore, Robert—DB  
29 Rust, Benny—DB  
30 Bailey, Tom—RB  
31 Magalski, Paul—FB  
33 Parker, Clint—LB  
35 Gray, Mike—WR  
36 Oreair, Rick—RB  
40 McMillan, Eddie—DB  
42 Ratliff, Ron—DB  
43 Montgomery, John—DB  
44 Gridley, Buddy—DB  
46 Bengtson, Brian—PK  
47 Chip Harris—RB-P  
48 Jarrett, James—FB  
49 Glisson, Guy—LB  
50 Whitehurst, Dan—LB  
51 Howell, Bobby—LB  
52 Sowers, Craig—C  
53 Stokes, Jay—OG  
54 Glass, Mike—LB  
55 Dees, Allen—C  
56 Lohse, Bill—LB  
57 Carden, Robert—OT  
58 Gildea, Steve—LB  
59 Strickland, Larry—OT  
60 Rice, Barry—LB  
61 Essex, John—OT  
62 Bass, Theron—LB  
63 Montgomery, George—OG  
64 Musser, Charley—OG  
65 McKinnie, J. W.—OG  
66 Strickler, Joe—OT  
67 Sammons, Mike—OG  
68 Beville, Steve—C  
69 White, Tom—DT  
70 Henson, Bill—DT  
72 Gibbs, Shane—OT  
74 McEachern, Robert—DT  
75 Amman, Richard—DT  
76 Rimby, Bill—OT  
77 Minor, Roger—OT  
80 Hunt, Charlie—DE  
81 Tyson, Jim—TE  
82 Dawson, Rhett—WR  
83 Wallace, Ron—DE  
84 Parris, Gary—TE  
85 Shaw, Bill—DE  
86 Hall, Randy—DE  
87 Zaffran, Ted—TE  
88 Rice, Beryl—DE

## FLORIDA STATE "Seminoles"

Offense			Defense		
WR	22	Barry Smith	LE	86	Randy Hall
	35	Mike Gray		85	Bill Shaw
LT	66	Joe Strickler	LT	74	Robert McEachern
	72	Shane Gibbs		69	Tom White
LG	65	J. W. McKinnie	LLB	58	Steve Gildea
	67	Mike Sammons		54	Mike Glass
C	55	Allen Dees	MLB	56	Bill Lohse
	68	Steve Beville		51	Bobby Howell
RG	76	Bill Rimby	RLB	50	Dan Whitehurst
	63	G. Montgomery		62	Theron Bass
RT	77	Roger Minor	RT	75	Richard Amman
	53	Jay Stokes		59	Larry Strickland
TE	81	Jim Tyson	RE	83	Ron Wallace
	87	Ted Zaffran		88	Beryl Rice
QB	12	Frank Whigham	MON	44	Buddy Gridley
	15	Tommy Warren		49	Guy Glisson
RB	30	Tom Bailey	LC	26	James Thomas
	27	Arthur Munroe		40	Eddie McMillan
FB	24	John Lanahan	SAF	20	David Snell
	48	James Jarrett		28	Robert Ashmore
	31	Paul Magalski		43	J. Montgomery
WR	82	Rhett Dawson	RC	29	Benny Rust
	18	Kent Gaydos		42	Ron Ratliff

**PUNTS** — 3 Duane Carrell

**PUNT RETURNS** — 20 David Snell

**PLACEMENTS** — 11 Frank Fontes, 3 Duane Carrell,

**KICKOFF RETURNS** — 27 Arthur Munroe, 20 David Snell

## WAKE FOREST "Deacons"

Offense			Defense		
SE	82	Garry Winrow	LE	75	Win Headley
	87	Dave Doda		70	Cal Koch
LT	78	Gerald McGowan	LT	76	Dick Chulada
	65	Tom Martin		79	James Caywood
LG	64	Ted Waite	LLB	63	Mike Magnot
	73	T. Mangiaracina		84	Joe Theriault
C	53	Nick Vrhovac	MLB	83	John Phillips
	50	Gary German		88	Chris Teague
RG	69	Bill Bobbora	RLB	56	Ed Bradley
	74	Jim Pope		57	Don Brown
RT	61	Vince Nedimyer	RT	52	Ed Stetz
	71	Terry Bennett		51	Randy Cox
TE	11	Junior Moore	RE	55	Carlye Pate
	22	Tommy Campbell		41	Larry Causey
QB	5	Larry Russell	MON	34	Pat McHenry
	7	Jim McMahan		23	Nick Arcaro
TB	32	Gary Johnson	LCB	12	Dick Bozoian
	40	Ken Garrett		16	Joel Bowden
FB	44	Larry Hopkins	RCB	15	Terry Kuharchek
	8	Steve Hogan		95	Sammy Rothrock
FL	35	Steve Bowden	Saf	14	Frank Fussell
	24	Dave Lindsay		36	Ernie Jakubovic

**PUNTS** — 86 Tracy Loundsbury

**PLACEMENTS** — 86 Tracy Loundsbury

**PUNT RETURNS** — 15 Terry Kuharchek, 14 Frank Fussell

**KICKOFF RETURNS** — 40 Mike Garrett, 32 Gary Johnson, 11 Junior Moore

## WAKE FOREST

5 Russell, Larry—QB  
7 McMahan, Jim—QB  
8 Hogan, Steve—FB  
10 Ryan, James—QB  
11 Moore, Junior—RB  
12 Bozoian, Dick—DB  
14 Fussell, Frank—DB  
15 Kuharchek, Terry—DB  
16 Bowden, Joel—DB  
20 Holt, Phil—RB  
21 McCov, Gary—SE  
22 Campbell, Tommy—RB  
23 Arcaro, Nick—DB  
24 Lindsay, Dave—DB  
32 Johnson, Garf—RB  
34 McHenry, Pat—DB  
35 Bowden, Steve—RB  
36 Jakubovic, Ernie—DB  
40 Garrett, Ken—RB  
41 Causey, Larry—LB  
43 Howlette, Mike—SE  
44 Hopkins, Larry—FB  
50 German, Gary—C  
51 Cox, Randy—C  
52 Stetz, Ed—LB  
53 Vrhovac, Nick—C  
55 Pate, Carlye—LB  
56 Bradley, Ed—LB  
57 Brown, Don—LB  
59 Grundies, Dave—OT  
61 Nedimyer, Vice—OT  
62 Spencer, Mike—C  
63 Magnot, Mike—DT  
64 Waite, Ted—OG  
65 Martin, Tom—OG  
69 Bobbora, Bill—OG  
70 Koch, Calvin—DT  
71 Bennett, Terry—DT  
72 Komondorea, Steve—DT  
73 Mangiaracina, Tony—OG  
74 Pope, Jim—LB  
75 Headley, Win—DT  
76 Chulada, Dick—DT  
77 Logan, Archie—DT  
78 McGowan, Gerry—OT  
79 Caywood, James—DT  
80 Godfrey, Neil—DE  
82 Winrow, Gary—TE  
83 Phillips, John—DT  
84 Theriault, Joe—OT  
86 Loundsbury, Tracy—K  
87 Doda, David—TE  
88 Teague, Chris—DE  
89 Mellon, John—SE  
95 Rothrock, Sammy—DB



## DRIFTWOOD MOTEL and RESTAURANT

AMERICAN EXPRESS - DINERS - AMERICAN OIL - PHILLIPS 66 CREDIT CARDS HONORED

1402 W. TENN. (U.S. 90)

(904) 224-4174

- AIR CONDITIONED
- DIRECT DIAL PHONES
- Se habla Espanol
- CABLE COLOR TV
- POOL
- Northwest corner of Campus on U.S. 90; Fla. 20 West



# SUMMARY OF FOOTBALL GAME STATISTICS — Home Team

TEAM  
CODE  
251

Home Team FLA. STATE First Downs: (Rush) 9 (Pass) 10 (Pen.) - Total 19 Penalties Against: (No.) 4 (Yards) 40 Own Fumbles: (No.) 3 (Lost) 0

IMPORTANT: Most player categories are now ranked on per-game average. Thus, it's vital that you consider every player (on both teams) with any statistics in any game this season (get season player statistics from both SID's). Then list below the code number and last name of players who have season figures but did NOT play in this game. A game played is one play—whether or not the player touches the ball. All players will be charged with a game unless you tell NCSS otherwise. If a player with first-time statistics has missed games, fill in below—after getting from his SID how many games missed.

## DID NOT PLAY IN THIS GAME

Code No. Last Name Code No. Last Name Code No. Last Name Code No. Last Name Code No. Last Name Code No. Last Name

68 PEDERSON

XXXXXXXX

## PLAYERS WITH FIRST-TIME STATISTICS WHO HAVE MISSED GAMES:

Code No. Last Name No. Games Missed

Code No. Last Name No. Games Missed

Player Code	PLAYER	RUSHING					FORWARD PASSING					TOT. OFFENSE		RECEIVING			INT. RETURNS			PUNTING			PUNT RETURNS			K. O. RETURNS			SCORING														
		Times Carried	Yards Gain	Yards Loss	Net Gain	TD's	No. Att.	No. Comp.	Had Int.	Net Gain	Scoring TD's/Conv.	Total Plays	Net Gain	No. Caught	Yards Gain	TD's	No. Inter.	Yards Return	TD's	Times Kicked	Yards Kicked	Blkd.	Number Returns	Yards Return	TD's	Number Returns	Yards Return	TD's	Touch-downs	X Pts. Att.	Kick Made	Other X Pts. Att.	Field Goals Att.	Goals Made	Points								
04	BAILEY	19	56	7	49	-	B					C	19	49	2	41	-	E			F		G		H		S																
12	CARRELL	A					B					C		D						3	140		G		H		S																
70	DAWSON	A					B					C		D	4	61	-	E			F		G		H		S																
26	FONTES	A					B					C		D								F		G		H		S															
30	GLISSON	A					B					C		D								F		G		H		S															
31	GRAY	A					B					C		D	1	15	-	E			F		G		H		S																
41	JARRETT	A	3	4	0	4	-	B				C	3	4	1	20	-	E			F		G		H		S																
44	LANAHAN	A	7	25	5	20	-	B				C	7	20								F		G		H		S															
54	MAGALSKI	A	3	48	1	47		B				C	3	47								F		G		H		S															
57	MUNROE	A	16	73	0	73	1	B				C	16	73	4	28	-	E			F		G		H	1	31	-															
78	SMITH	A					B					C		D	1	12	-	E			F		G		H		S																
79	SNELL	A					B					C		D								F		G		H		S															
84	THOMAS	A					B					C		D								F		G		H		S															
85	TYSON	A					B					C		D	2	32	-	E			F		G		H		S																
92	WALLACE	A					B					C		D								F		G		H		S															
89	WARREN	A	1	0	9	-9	-	B	1	10	-10	C	2	10								F		G		H		S															
90	WHIGHAM	A	8	19	13	6	-	B	9	14	12	C	38	216								F		G		H		S															
		A					B					C		D								F		G		H		S															
		A					B					C		D								F		G		H		S															
	TEAM TOTALS	57	235	35	190	1	B	31	15	1	209	0	0	88	399	15	209	-	E	1	0	0	F	3	140	0	G	4	30	-	H	3	71	-	S	1	1	1	-	-	8	4	19

Opponents WAKE FOREST First Downs: (Rush) 9 (Pass) 3 (Pen.) 1 Total 13 Penalties Against: (No.) 2 (Yards) 21 Own Fumbles: (No.) 4 (Lost) 4

Enter Here Team Totals From Visiting Team Summary	RUSHING					FORWARD PASSING					TOT. OFFENSE		RECEIVING			INT. RETURNS			PUNTING			PUNT RETURNS			K. O. RETURNS			SCORING						
	Times Carried	Yards Gain	Yards Loss	Net Gain	TD's	No. Att.	No. Comp.	Had Int.	Net Gain	Scoring	Total Plays	Net Gain	No. Caught	Yards Gain	TD's	No. Inter.	Yards Return	TD's	Times Kicked	Yards Kicked	Blkd.	Number Returns	Yards Return	TD's	Number Returns	Yards Return	TD's	Touch- downs	X Pts. Kick	Other X Pts.	Field Goals	Points		
										TD's/Conv.																			Att.				Made	Att.
VISITING TEAM TOTALS	44	273	34	239	2	11	4	1	55	0 0	55	294	4	55	0	1	0	0	7	270	-	2	12	-	4	112	0	2	2	2	0	0	0	14

Date of Game SEPT 26, 1970 Where Played TALLAHASSEE, FL Authenticated by W. H. Wharton and Lamie Stanford (For Opponents)

[illegible]



TEAM  
CODE  
228

# SUMMARY OF FOOTBALL GAME STATISTICS — Visiting Team

Visiting Team WAKE FOREST First Downs: (Rush) 9 (Pass) 3 (Pen.) 1 Total 13 Penalties Against: (No.) 2 (Yards) 21 Own Fumbles: (No.) 4 (Lost) 4

IMPORTANT: Most player categories are now ranked on per-game average. Thus, it's vital that you consider every player (on both teams) with any statistics in any game this season (get season player statistics from both SIDs). Then list below the code number and last name of players who have season figures but did NOT play in this game. A game played is one play—whether or not the player touches the ball. All players will be charged with a game unless you tell NCSS otherwise. If a player with first-time statistics has missed games, fill in below—after getting from his SID how many games missed.

## DID NOT PLAY IN THIS GAME

Code No. Last Name Code No. Last Name Code No. Last Name Code No. Last Name Code No. Last Name Code No. Last Name Code No. Last Name  
55 MCMAHEN \_\_\_\_\_

XXXXXXXX

## PLAYERS WITH FIRST-TIME STATISTICS WHO HAVE MISSED GAMES:

Code No. Last Name No. Games Missed

Code No. Last Name No. Games Missed

Player Code	PLAYER	RUSHING					FORWARD PASSING					TOT. OFFENSE		RECEIVING			INT. RETURNS			PUNTING			PUNT RETURNS			K. O. RETURNS			SCORING						
		Times Carried	Yards Gain	Yards Loss	Net Gain	TD's	No. Att.	No. Comp.	Had Int.	Net Gain	Scoring TD's Conv.	Total Plays	Net Gain	No. Caught	Yards Gain	TD's	No. Inter.	Yards Return	TD's	Times Kicked	Yards Kicked	Blkd.	Number Returns	Yards Return	TD's	Number Returns	Yards Return	TD's	Touch-downs	X Pts. Att.	Kick Made	Other X Pts. Att.	Field Goals Att.	Goals Made	Points
05	BOWDEN, S	A					B					C		D		E			F			G			H	1	20	-	S						
26	FUSSELL	A					B					C		D		E			F			G	1	3	-	H									
37	HOPKINS	A	12	74	3	71	1	B				12	71	D		E			F			G			H			1					6		
42	JOHNSON	A	14	112	2	110		B				14	110	D		E			F			G			H										
45	KUHARCHUK	A					B					C		D		E			F			G	1	9	-	H									
50	LEWISBURY	A					B					C		D		E			F			G			H				2	2			2		
54	MCHEHRY	A					B					C		D		E	1	0	-	F			G		H										
74	RUSSELL	A	16	61	29	32	1	B	11	4	1	55	0	D		E			F			G			H			1					6		
90	WINNEN	A					B					C		D	3	45	0		F			G			H										
28	GARRETT	A	2	26	0	26		B				C	2	26	D	1	10	0	E			F			H	3	92	-	S						
		A					B					C		D		E			F			G			H										
		A					B					C		D		E			F			G			H										
		A					B					C		D		E			F			G			H										
		A					B					C		D		E			F			G			H										
		A					B					C		D		E			F			G			H										
		A					B					C		D		E			F			G			H										
		A					B					C		D		E			F			G			H										
		A					B					C		D		E			F			G			H										
		A					B					C		D		E			F			G			H										
		A					B					C		D		E			F			G			H										
		A					B					C		D		E			F			G			H										
		A					B					C		D		E			F			G			H										
		A					B					C		D		E			F			G			H										
		A					B					C		D		E			F			G			H										
		A					B					C		D		E			F			G			H										
		A					B					C		D		E			F			G			H										
		A					B					C		D		E			F			G			H										
		A					B					C		D		E			F			G			H										
		A					B					C		D		E			F			G			H										
		A					B					C		D		E			F			G			H										
		A					B					C		D		E			F			G			H										
		A					B					C		D		E			F			G			H										
		A					B					C		D		E			F			G			H										
		A					B					C		D		E			F			G			H										
		A					B					C		D		E			F			G			H										
		A					B					C		D		E			F			G			H										
		A					B					C		D		E			F			G			H										
		A					B					C		D		E			F			G			H										
		A					B					C		D		E			F			G			H										
		A					B					C		D		E			F			G			H										
		A					B					C		D		E			F			G			H										
		A					B					C		D		E			F			G			H										
		A					B					C		D		E			F			G			H										
		A					B					C		D		E			F			G			H										
		A					B					C		D		E			F			G			H										
		A					B					C		D		E			F			G			H										
		A					B					C		D		E			F			G			H										
		A					B					C		D		E			F			G			H										
		A					B					C		D		E			F			G			H										
		A					B					C		D		E			F			G			H										
		A					B					C		D		E			F			G			H										
		A					B					C		D		E			F			G			H										
		A					B					C		D		E			F			G			H										
		A					B					C		D		E			F			G			H										
		A					B					C		D		E			F			G			H										
		A					B					C		D		E			F			G			H										
		A					B					C		D		E			F			G			H										
		A					B					C		D		E			F			G			H										
		A					B					C		D		E			F			G			H										
		A					B					C		D		E			F			G			H										
		A					B					C		D		E			F			G			H										
		A					B					C		D		E			F			G			H										
		A					B					C		D		E			F			G			H										
		A					B					C		D		E			F			G			H										
		A					B					C		D		E			F			G			H										
		A					B					C		D		E			F			G			H										
		A					B					C		D		E			F			G			H										
		A					B					C		D		E			F			G			H										
		A					B					C		D		E			F			G			H										
		A					B					C		D		E			F			G			H										
		A					B					C		D		E			F			G			H										
		A					B					C		D		E			F			G			H										
		A					B					C		D		E			F			G			H										
		A					B					C		D		E			F			G			H										
</																																			

FIDELITY STATE VS. WAKE FOREST  
Campbell Stadium, Tallahassee  
September 26, 1970-7:30 pm.

WEATHER: Fair  
TEMP: 82  
WIND: 15/ 3 mph

WF Captains: 35 Bowden, 55 Pate. FSU: 76 Rimby, 11 Pontes, 56 Lohse.

WF wins toss and receives. Pontes kicks to Garrett on three. returns 26 yards to 30

W30 1-10 Russell keeps for no gain.  
W30 2-10 Johnson at right tackle for two yards.  
W32 3-8 Russell to pass loses seven. Wallace  
W25 4-15 Loundsbury kicks 36 yards. Snell three yard return to 42.  
FSU Ball  
F42 1-10 Whigham pass intended for Smith incomplete  
F42 2-10 Bailey sweeps left for five yards.  
F47 3-5 Bailey gets four, just shy of first down.  
W49 4-1 Bailey smashes right side for four yards and 1st down.  
W45 1-10 Whigham pass intended for Dawson incomplete  
W45 2-10 Bailey at left guard gains two.  
W43 3-8 Bailey sweeps right for seven yards, inches short of 1st down.  
W36 4-1 Munroe dives for two yards and first down.  
W34 1-10 Munroe picks up two more.  
W32 2-8 Munroe once again for two yards.  
W30 3-6 Whigham pass complete to Dawson for 13 yards and 1st down.  
W17 1-10 Bailey up middle for four yards.  
W13 2-6 Ianahan no gain.  
W13 3-6 Whigham fumbles but recovers for loss of two.  
W15 4-9 Pontes 32 yard field goal attempt is no good. 7:18  
WF Ball  
W20 1-10 Johnson through middle for five yards.  
W25 2-5 Johnson picks up two more.  
W27 3-3 Hopkins tries left tackle for two yards.  
W29 4-1 Loundsbury kicks 38 yards to Snell, loses two on return.  
FSU Ball  
F30 1-10 Ianahan takes pitchout for four yards, left side.  
F34 2-6 Ianahan at left tackle for four more.  
F38 3-2 Ianahan sweeps left for six and 1st down.  
F44 1-10 Ianahan same spot for four yards.  
F48 2-6 Bailey picks up three  
W49 3-3 Munroe slashes off right tackle for six and a first down.  
W43 1-10 Whigham pass complete to Munroe for 14 yards and 1st down.  
W29 1-10 Munroe gets two on left sweep.  
W27 2-8 Munroe gets one yard.  
W26 3-6 Whigham scrambles out of pocket for three yards.  
W23 4-3 Pontes 39 yard field goal attempt is good. 0:17 70 yards/11 plays

FSU 3, Wake Forest 0 0:17

Pontes kicks to Garrett on one. Returns 36 yards to 37.  
W37 1-10 Hopkins at middle for one yard as quarter ends.

FSU 3, Wake Forest 0



## First Quarter Statistics

	WAKE FOREST Visitors	FSU Home Team
First Downs .....	0	6
Net Yards Rushing .....	4	63
Net Yards Passing .....	0	27
Total Offense .....	4	90
Passes (Completed-Attempted-Intercepted) ....	0-0-0	2-4-0
Punts, Average .....	2 for 37 ave.	0 for —
Fumbles Lost .....	—	—
Yards Penalized .....	— for —	— for —

## Second Quarter

### WF Ball

W38 2-9 Johnson gets 12 yards.  
 50 1-10 Russell pass complete to Winrow for 14 yards and 1st down.  
 F36 1-10 Russell keeps for 11 yards and 1st down.  
 F25 1-10 Russell pitches out to Hopkins for 25 yards and touchdown.  
 Lounsbury kick is good.

Wake Forest 7, FSU 3 13:25 62 yards/5 plays

Lounsbury kicks to Snell at ten. Returns 23 yards to 33

F33 1-10 Bailey picks up four yards.  
 F37 2-6 Whigham pass complete to Dawson for 11 yards and 1st down.  
 F48 1-10 Magalski breaks out of left side for 42 yards and 1st down. McHenry saves TD.  
 W6 1-0 Bailey no gain on busted play.  
 W6 2-0 Munroe gets two yards on left side.  
 W4 3-0 Whigham pass intended for Tyson incomplete, overthrown.  
 W4 4-0 Fontes 22 yard field goal is good.

Wake Forest 7, FSU 6 10:49 67 yards/7 plays

Fontes kicks into deep endzone for touchback

W20 1-10 Russell pass complete to Winrow for 25 yards and 1st down.  
 W45 1-10 Russell pass intended for Winrow incomplete, bobbled.  
 W45 2-10 Russell loses three, then WF loses 15 for Clipping.  
 W29 2-26 Russell to pass ~~xxx~~ smothered by Wallace and Amman for loss of six.  
 W23 3-32 Hopkins up middle for four yards.  
 W27 4-28 Lounsbury punts ~~xxx~~ out of bounds on F42. 30 yard punt, no return.  
 FSU Ball  
 F43 1-10 Whigham pass intended for Smith ~~xxx~~ intercepted by McHenry on W10.  
 WF Ball  
 W10 1-10 Garrett plunges for five yards.  
 W15 2-5 Johnson gains three.  
 W18 3-2 Johnson breaks out for ~~28 yards and 1st down~~ 15 yards and 1st down.  
 W33 1-10 Hopkins picks up seven yards.  
 W40 2-3 Johnson gains two.  
 W42 3-1 Johnson off left tackle for 47 yards and 1st down. Thomas saves TD  
 F11 1-10 Johnson up middle for one yard.  
 F10 2-9 Russell keeps for ten yards and touchdown.  
 Lounsbury kick is good.

Wake Forest 14, FSU 6 4:18 90 yards/8 plays

Lounsbury kicks to Munroe on six, returns 31 yards to 37

F37 1-10 Bailey fumbles, Strickler recovers for seven yard loss  
 F30 2-17 Whigham pass intended for Tyson incomplete, overthrown  
 F30 3-17 Whigham pass complete to Smith for 12 yards.  
 F42 4-4 Carrell punts 49 yards to Kuharchek who returns nine yards.  
 WF Ball  
 W19 1-10 Hopkins picks up two yards.  
 W21 2-8 Russell pass complete to Winrow for six yards.  
 W26 3-2 Johnson tries right side for one yard.  
 W27 4-1 Lounsbury punts 47 yards to Snell who returns eight yards to 34.  
 FSU Ball  
 F34 1-10 Whigham pass complete to Tyson for 16 yards ~~ix~~ and 1st down.  
 50 1-10 Whigham pass complete to Munroe for 11 yards and 1st down.  
 W39 1-10 Whigham pass complete to Tyson for 16 yards and 1st down.  
 W23 1-10 Whigham pass intended for Smith incomplete.  
 W23 2-10 Whigham dropped for loss of six.



Second Quarter(continued)

FSU Ball  
W29 7-10 Whigham pass ~~complete~~ intended for Smith incomplete  
W29 7-16 Fontes 47 yard field goal attempt is no good 0:19  
WF Ball  
W20 3-10 Russell on quarterback sneak gains four  
W24 2-6 half ends.

Wake Forest 14, FSU 6

OFFICIAL ATTENDANCE: 27, 196

# FLASH FOOTBALL STATS

Quick Halftime and After Game Reports of Vital Team Statistics and Individual Leaders  
(Approved Wire Services Form)

HALFTIME

Circle One

FINAL

## TEAM STATISTICS

	WAKE FOREST VISITORS	FSU HOME TEAM
Score . . . . .	14	6
First Downs . . . . .	8	10
Rushing Yardage (Net) . . . . .	147	98
Passing Yardage (Net) . . . . .	45	93
*Return Yardage (Net) . . . . .	9	8
Passes (Comp'd - Att'd - Had Int'd) . . . . .	3 - 4 - 0	7 - 14 - 1
Punts (Number - Average) . . . . .	4 - 37.8	1 - 49
Fumbles Lost . . . . .	0	0
Yards Penalized . . . . .	16	0

\*Return of Punts, Intercepted Passes and Fumbles (not kickoffs).

## INDIVIDUAL LEADERS

WAKE FOREST VISITORS				
RUSHING	Att'd	Net Yards	For TD	Long Gain
ROBINSON	10	90	-	47
HOPKINS	5	40	1	25
RUSSELL	6	12	1	11
GARRETT	1	5	-	5
PASSING	Att-Comp-H.I.	Yds.	For TD	
RUSSELL	4-3-0	45	-	
PASS RECEIVING	No.	Yards	For TD	
WILKINSON	3	45	-	
PUNTING	No.	Avg.	Long Gain	
LOUNDSBURY	4	37.8	47	

FSU HOME TEAM				
RUSHING	Att'd	Net Yards	For TD	Long Gain
BAILEY	10	26	-	7
MUNROE	7	17	-	6
MAGALSKI	1	42	-	42
LANAHAN	5	18	-	6
PASSING	Att-Comp-H.I.	Yds.	For TD	
WHIGHAM	14-7-1	93	-	
PASS RECEIVING	No.	Yards	For TD	
TYSON	2	32	-	
MUNROE	2	25	-	
DAWSON	2	24	-	
Smith	1	12	-	
PUNTING	No.	Avg.	Long Gain	
CARRELL	1	49	49	

### Third Quarter

FSU receives. Lounsbury kicks to Snell on 10, returns 17 yards to 27

F27 1-10 Whigham keeps for gain of two.  
 F29 2-8 Whigham pass complete to Gray for 15 yards and 1st down.  
 F44 1-10 Bailey picks up one.  
 F45 2-9 Bailey gets three more.  
 F48 3-6 Whigham pass complete to Bailey for five yards.  
 F47 1-1 Bailey drives for two yards and 1st down.  
 W45 1-10 Whigham pass complete to Dawson for 13 yards and 1st down.  
 W32 1-10 Magalski picks up two.  
 W30 2-8 Whigham pass intended for Munroe incomplete, dropped.  
 W30 3-8 Whigham screen pass intended for Bailey incomplete, short.  
 W30 4-8 Fontes 47 yard field goal is good.

Wake Forest 14, FSU 9 10:59 63 yards/11 plays

Fontes kicks to Bowden on five, returns 20 yards to 25

W25 1-10 Johnson picks up four  
 W29 2-6 Russell loses five, tackle by Shaw  
 W24 3-11 Russell pass intended for Winrow incomplete, dropped.  
 W24 4-11 Lounsbury punts to Snell on 29, returns 22 yards to W49. 47 yard punt  
 FSU Ball  
 W49 1-10 Jarrett picks up one.  
 W48 2-9 Whigham pass complete to Jarrett for 20 yards and 1st down.  
 W28 1-10 Jarrett gets six, but FSU loses 15, holding.  
~~W49 1-10 Bailey drives for 36 yards and 1st down.~~  
~~W49 1-10 Bailey drives for 36 yards and 1st down.~~  
 W38 1-25 Whigham pass complete to Bailey for 36 yards and 1st down.  
 W2 1-6 Munroe drives it in for TD.  
 Fontes kick is good.

~~FSU~~

FSU 16, Wake Forest 14 8:06

Fontes kick to Garrett in end zone, return to 30

W30 1-1-0 Hopkins gains 21 yards  
 F49 1-10 Johnson breaks loose for 16 yards and 1st down.  
 F33 1-10 ~~Garrett~~ fumbles on pitch, loses three, Shaw recovers for FSU  
 FSU Ball  
 F33 1-10 Jarrett gains two.  
 F36 2-8 Whigham pass complete to Dawson for 24 yards and 1st down.  
 W38 1-10 Whigham keeps for six  
 W32 2-4 Whigham pass intended for Dawson incomplete in end zone.  
 W32 3-4 FSU penalized five yards, illegal procedure.  
 W37 3-9 Whigham pass intended for Munroe incomplete.  
 W37 4-9 Fontes 53 yard field goal is no good. 5:27  
 WF Ball  
 W20 1-10 Hopkins up middle for one.  
 W21 2-9 Russell pass incomplete, deflected.  
 W21 3-9 Russell tries to pass but loses 11. Wallace and Shaw on tackle.  
 W10 4-20 Lounsbury punts out of bounds on WF 38. 28 yard kick.  
 FSU Ball  
 W38 1-10 Whigham pass intended for Bailey incomplete, dropped.  
 W38 2-10 Bailey on sweep right for one yard.  
 W37 3-9 Whigham pass intended for Dawson incomplete, overthrown  
 W37 4-9 Fontes on FG attempt, but Warren fumbles, WF takes over on & 46. nine yard loss.  
 WF Ball  
 W46 1-10 Russell keeps for two.  
 W48 2-8 Hopkins gets three yards, FSU penalized 15 for personal foul. 1st down.  
 F34 1-10 Hopkins no gain, & fumbles, Wallace recovers for FSU



Third quarter continued

FSU	D-11	
F33	1-10	Munroe gets four
F37	2-6	Munroe gains eight yards and 1st down.
M5	1-10	Munroe breaks loose for 29 yards and 1st down.
W26	1-10	Munroe gets two.
W24	2-8	quarter ends.

FSU 16, Wake Forest 14

Fourth Quarter

FSU Ball  
W25 2-8 Whigham pass intended for Dawson incomplete. Bezoian almost intercepts.  
W25 3-8 Whigham pass complete to Munroe for four yards.  
W21 4-4 Fake field goal, Warren pass complete to Munroe for one yard loss.  
WF Ball  
W22 1-10 Johnson gains two  
W24 2-8 Johnson loses two, stopped by Shaw.  
W22 3-10 Russell keeps for six yards.  
W28 4-4 Lounsbury punts dead on FSU 28. 44 yard punt.  
FSU Ball  
F28 1-10 Bailey sweeps right for one yard.  
F29 2-9 Bailey up middle for four yards.  
F33 3-5 Whigham pass intended for Tyson incomplete.  
F33 4-5 Carrell punts dead on W20. 47 yard punt.  
WF Ball  
W20 1-10 Russell on keep for eight yards  
W28 2-2 ~~Carrell gains~~ Hopkins gets five yards, fumbles, Glisson recovers for FSU  
FSU Ball  
W33 1-10 Munroe sweeps right for seven yards.  
W26 2-3 Jarrett gains one.  
W25 3-2 Munroe off left tackle for five yards and 1st down.  
W20 1-10 Munroe slips down for no gain on pitchout.  
W20 2-10 Munroe up middle for no gain.  
W20 3-10 Whigham pass intended for Munroe incomplete  
W20 4-10 Fontes 37 yard field goal is good.

New FSU record  
4 in one game

FSU 19, Wake Forest 14 7:27 33 yards/7 plays

Fontes kick to Garrett in end zone, no return.  
W20 1-10 Russell slips down, but gains one.  
W21 2-9 Hopkins picks up three.  
W24 3-6 Russell pass intended for Bowden intercepted by Thomas on F36  
FSU Ball  
F36 1-10 Ianahan struggles for seven yards.  
F43 2-3 Bailey ~~gains three~~ gains three, but FSU loses five, offsides.  
F38 2-8 Ianahan loses five on draw.  
F33 3-13 Whigham keeps for eight yards.  
F41 4-5 Carrell punts to Kuharchek on 18, he fumbles, Gray recovers. 44 yard kick.  
FSU Ball  
W18 1-10 Bailey gets four.  
W14 2-6 Bailey up middle for two.  
W12 3-4 Magalski loses one.  
W13 4-5 Fontes kick is no good. 30 yard attempt 2:45  
WF Ball  
W20 1-10 Russell sneaks for three  
W23 2-7 Garrett breaks out for 21 yards and 1st down.  
W44 1-10 Russell keeps for eight ~~yards~~ yards.  
F48 2-2 Russell pass intended for Bowden incomplete. WF in motion, 5 yards.  
W47 2-7 Russell pass complete to Garrett for ten yards and 1st down.  
F43 1-10 Russell keeps for six yards.  
F37 2-4 Russell keeps for two.  
F35 3-2 Russell pass ~~xxx~~ intended for Garrett incomplete, Rust defends.  
F35 4-2 Russell pass intended for Hopkins incomplete.  
FSU Ball  
F35 1-10 Whigham falls on ball for ~~xxxxxx~~ loss of two.  
F33 2-12 Whigham falls for three yard loss as game ends.

FSU 19, Wake Forest 14

	LINE		SCORING			
	1	2	3	4		Final
LAKE FOREST	0	14	0	0		14
FLORIDA STATE	3	3	10	3		19

#### Scoring---

FSU- Fontes 39 yd FG. 0:17(1st Period)

WF- Hopkins 25 yd run. (Lounsbury kick) 13:25 2nd Period

FSU- Fontes 22 yd FG. 10:49 2nd Period

WF- Russell 10 yd run. (Lounsbury kick) 4:18 2nd Period

FSU- Fontes 47 yd FG. 10:59 3rd Period

FSU- Monroe 1 yd run. (Fontes kick) 8:04 3rd Period

FSU- Fontes 37 yd FG. 7:27 4th Period (School record-<sup>44</sup>FGsin game)

Frank Fontes set school record for most FGsin one game

with 4!

Attendance- 27,196



# FLASH FOOTBALL STATS

Quick Halftime and After Game Reports of Vital Team Statistics and Individual Leaders  
(Approved Wire Services Form)

HALFTIME

Circle One

FINAL

## TEAM STATISTICS

	WAKE FOREST VISITORS	FSU HOME TEAM
Score . . . . .	14	19
First Downs . . . . .	13	19
Rushing Yardage (Net) . . . . .	239	190
Passing Yardage (Net) . . . . .	55	209
*Return Yardage (Net) . . . . .	12	30
Passes (Comp'd - Att'd - Had Intc'd) . . . . .	4 - 11 - 1	15 - 31 - 1
Punts (Number - Average) . . . . .	7 - 38.6	3 - 46.7
Fumbles Lost . . . . .	4	0
Yards Penalized . . . . .	21	20

\*Return of Punts, Intercepted Passes and Fumbles (not kickoffs).

## INDIVIDUAL LEADERS

### WAKE FOREST VISITORS

RUSHING	Att'd	Net Yards	For TD	Long Gain
JOHNSON	14	110	-	47
HOPKINS	12	71	1	25
RUSSELL	16	32	1	11
GARRETT	2	26	-	21
PASSING	Att-Comp-H.I.	Yds.	For TD	
RUSSELL	11 - 4 - 1	55	-	

PASS RECEIVING	No.	Yards	For TD
WINROW	3	45	-
GARRETT	1	10	-

PUNTING	No.	Avg.	Long Gain
LOUNDSBURY	7	38.6	47

### FSU HOME TEAM

RUSHING	Att'd	Net Yards	For TD	Long Gain
BAILEY	19	49	-	7
MUNROE	16	73	1	29
MAGALSKI	3	47	-	46
WHIGHAM	8	6	-	8
PASSING	Att-Comp-H.I.	Yds.	For TD	
WHIGHAM	30 - 14 - 1	210	-	

PASS RECEIVING	No.	Yards	For TD
MUNROE	4	28	-
DAWSON	4	61	-
BAILEY	2	41	-
TYSON	2	32	-

PUNTING	No.	Avg.	Long Gain
CARRELL	3	46.7	49

WAKE FOREST vs. FSU

Date 9/26/70

Stadium CAMPBELL

Attendance

## FINAL TEAM STATISTICS

	WAKE FOREST VISITORS	FSU HOME TEAM
Total First Downs	13	19
Rushing Yardage (Net)	239	190
Passing Yardage (Net)	55	209
Total Offense	294	399
Return Yardage	12	30
Passes Completed/Att'd/Had Int/	4-11-1	15-31-1
Passes Intercepted By	1	1
Number Punts/ Average	7-38.6	3-46.7
Fumbles/ Fumbles Lost	4-4	3-0
Total Yards Penalized	2-21	4-20
First Downs Rushing	9	9
First Downs Passing	3	10
First Downs Penalty	1	0
Yards Lost Rushing	34	35
Yards Interceptions Returned	0	0
Punts Blocked By	0	0
Number Punts Returned	2	4
Total Yards Punts Returned	12	30
Number Kickoffs Returned	4	3
Total Yards Kickoffs Returned	112	71
Total Rushing Plays	44	57
Total Plays	55	88

## FINAL INDIVIDUAL FOOTBALL STATISTICS

WAKE FOREST  
VISITORS

RUSHING	Att'd	Net Yards	For TD	Long Run
JACKSON	14	110		47
HOPKINS	12	71	1	25
RUSSELL	16	32	1	11
GARRETT	2	26		21

TOTALS 44 239 2 -

PASSING	Att.-Compl.-H.I.	Yards	For TD	Long Pass
RUSSELL	11-4-1	55	-	25

TOTALS 11-4-1 55 - -

PASS RECEIVING	No.	Yds.	For TD	Long Rec'n
WINROW	3	45	-	25
GARRETT	1	10	-	10

TOTALS 4 55 - -

PUNTING	No.	Yards	Ave.	Long Punt
LOUNSBURY	7	270	38.6	47

TOTALS 7 270 38.6 47

ALL RETURNS	Punts No.	Yds.	Kickoffs No.	Yds.	Inter's No.	Yds.
GARRETT	-	-	3	92	-	-
BOWDEN	-	-	1	20	-	-
KUHARCHUK	1	9	-	-	-	-
McHENRY	-	-	-	-	1	0
FUSSELL	1	3	-	-	-	-

TOTALS 2 12 4 112 1 0

FLA. STATE  
HOME TEAM

RUSHING	Att'd	Net Yards	For TD	Long Run
WHIGHAM	8	6		8
LANAHAN	7	20		7
BAILEY	19	49		7
MUNROE	16	73	1	29
MAGALSKI	3	47		46
WARREN	1	(-9)		-
JARRETT	3	4		2

TOTALS 57 190 1 -

PASSING	Att.-Compl.-H.I.	Yards	For TD	Long Pass
WHIGHAM	30-14-1	210	-	36
WARREN	1-1-0	(-1)	-	-

TOTALS 31-15-1 209 - -

PASS RECEIVING	No.	Yds.	For TD	Long Rec'n
DAWSON	4	61	-	24
TYSON	2	32	-	16
BAILEY	2	41	-	36
MUNROE	4	28	-	14
SMITH	1	12	-	12
JARRETT	1	20	-	20
GRAY	1	15	-	15

TOTALS 15 209 - -

PUNTING	No.	Yards	Ave.	Long Punt
CARRELL	3	140	46.7	49

TOTALS 3 140 46.7 49

ALL RETURNS	Punts No.	Yds.	Kickoffs No.	Yds.	Inter's No.	Yds.
SNELL	4	30	2	40	-	-
MUNROE	-	-	1	31	-	-
THOMAS	-	-	-	-	1	0
<del>THOMAS</del>	-	-	-	-	-	-

TOTALS 4 30 3 71 1 0



QUOTES FROM COACH BILL PETE SON:

"Our offense looked good at times and certainly not good at others. We had more scoring opportunities than you do normally in two games.

"I think some of our kids grew up tonight and some didn't.

"Wake Forest certainly stuck in their. They gave us a lot of trouble with the option. They didn't do anything that we didn't expect on defense.

"We missed too many blocks. It seems we are still two or three inches away on offense. We missed a couple of long passes early in the game. And they were close. Then we decided to go away from the long pass and establish a running game.

"Now we have two weeks to iron things out for Florida and find the guys who want to play football."

QUOTES FROM COACH CAL STOLL:

"We fumbled it away. We played well enough to win. Our kids deserve a better fate than that. It's tough to lose one when you fumble it away.

"The first half was the best our offense has looked this season. Everytime we got something started in the second half, we hurt ourselves. That's nobody's fault ... it's just football. Hopkins (Larry) hasn't fumbled all year. He hasn't even fumbled in practice and tonight he had three. That shows you it's just football.

"Our defense played a good game. They were still in there too long, but a lot of that was because of the fumbles. On two of the fumbles, we had the ball in field goal position and anyone of them would have given us the lead.

"We lost Johnson (Gary) and Winrow (Gary). Johnson has a charley horse and Winrow an ankle injury. We ran out of people at the end. The kids deserve a lot credit after bouncing back after the last two weeks."