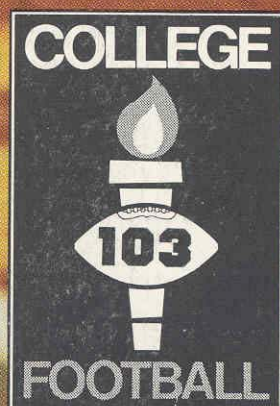


# FLORIDA STATE

MISSISSIPPI STATE

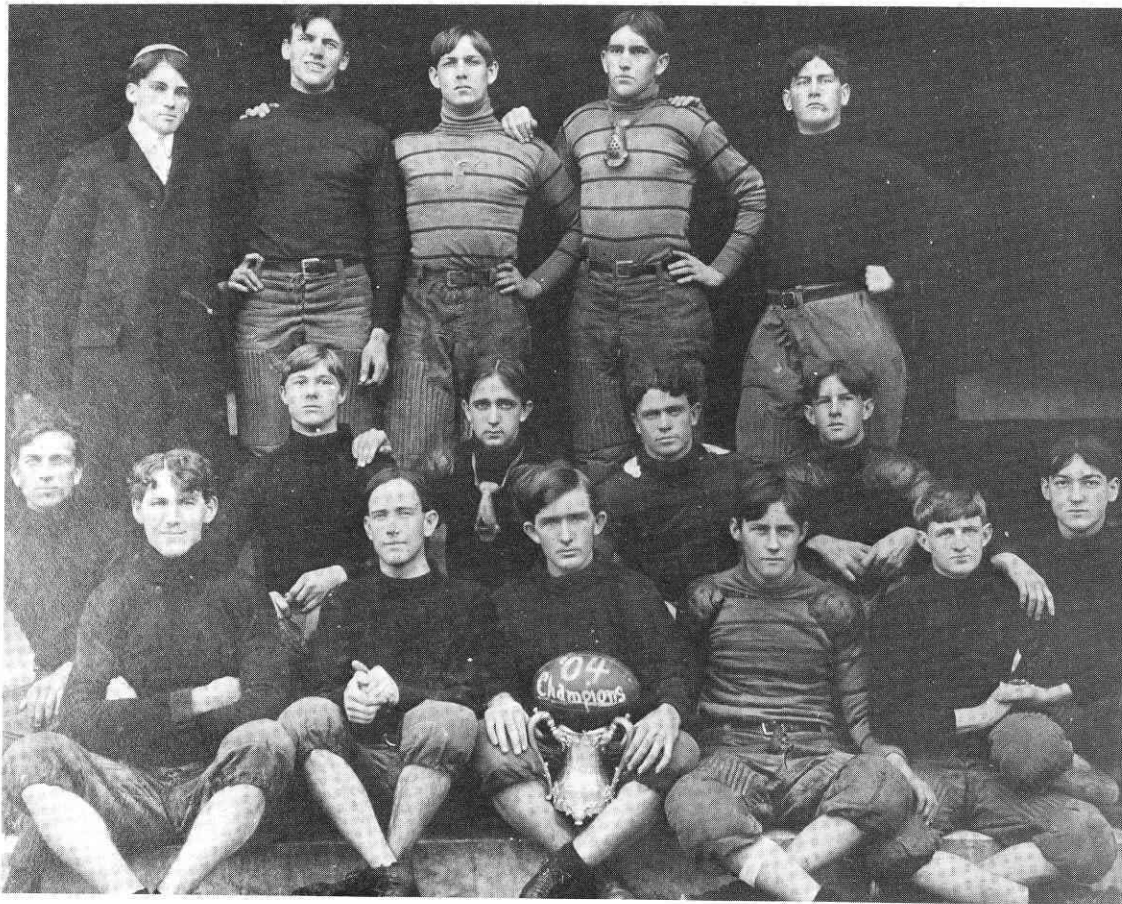


FOOTBALL MAGAZINE

October 9, 1971

75c





Seated around the silver cup are, (first row) Weldon Mullen, C.W. Peters, Dan Williams, F.W. Bucholz, J.K. Johnston, (second row) Ed Watson, David Cook, Fred McMullen, Moses Liddell, Vincent Green, (third row standing) Frank Gammon, Manager, Charles Puleston, Church Whitner, Guyte McCord, and H.H. Wells

## “...the finest article of football ever seen on the local gridiron.”

That's what the Lake City Florida Index newspaper had to say about the 1904 State Intercollegiate Champions, Florida State College. FSC won all four of their games to sweep the competition.

The Index writes, during the game between the University of Florida and Florida State College on October 28, 1904:

“On the part of the State College team, we can say, aside from fumbling, which they did on many occasions, and their off-side plays, they put up the finest article of football ever seen on the local gridiron.”

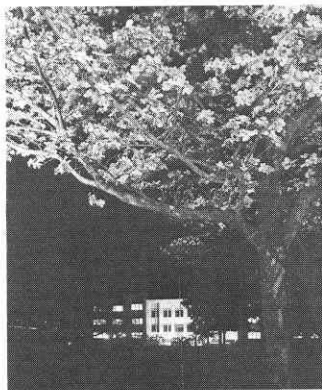
The final score was FSC 23, UF 0, in an uncompleted game. “Owing to darkness, the game was called with the ball in Florida's possession on her own 26 yard line,” added the Index.

In 1905, FSC became Florida State College for Women, thus terminating college football in Tallahassee, until 1947, when Florida State University fielded its first football team.

In 1904, the Lewis State Bank was forty-eight years old, and had been offering professional financial guidance to friends in Tallahassee that long. The Lewis State Bank is your family bank. Use it. People have for over a century.

### **The Lewis State Bank**

**When you've been in the banking business for over a century, you learn a lot.  
215 South Monroe Street**



**The Library And The Labs Are Busy  
Night And Day . . .**

Florida State's vast complex of science and research buildings is quite a contrast to the scientific facilities used on the campus back in the 1850s. Back then, they boasted of a microscope that could magnify a drop of vinegar "to 20 feet in diameter."

The University's student enrollment has had an equally phenomenal growth since its early (1857) Seminary days of 130 pupils. Today, its 10 schools and colleges are filled with more than 17,000 students who live, study and learn in classrooms, laboratories, dormitories and campus facilities valued at \$100 million. Students may pursue careers ranging from drama to zoology in colleges of arts and sciences, law and education, as well as the schools of nursing, social welfare, business, engineering science, home economics, music and library science.

I am gratified that so many of Florida State's loyal supporters in athletics are with us in Campbell Stadium for this exciting Seminole football season. Speaking for the entire University, I extend a warm welcome to all of our fans in the stands today. We hope that your stay on our campus will be enjoyable.

We have every reason to be proud of our athletic teams which, year after year, have established outstanding records in intercollegiate athletics. Florida State University might be said to have just entered Phase Three of its program of development in intercollegiate athletics. Phase One extended from the University's birth as a full-fledged university in 1947, to about 1960. Those were the years in which the foundation was laid for a sound program of athletics all across the board, as Florida State's name was carried throughout the region as an institution that would make its mark in athletics as it was doing in the academic arena.

Phase Two extended from about 1960 to the present. It was a period when Florida State joined the major competition, the time when we ceased to be "a breather," even for the best, and a time, incidentally, when scheduling the good teams became more difficult.

Phase Three has begun. It began on the first of January, 1971, when Larry Jones accepted our offer to become the University's sixth head coach of football. Another giant step was taken in April when Clay Stapleton agreed to become our Director of Athletics. This is the period when membership in the big leagues will pay off . . . when our acceptance as a member in full standing with other major universities engaged in athletics will bring the University and the Tallahassee community added recognition and stature and support in countless ways that go beyond the playing field.

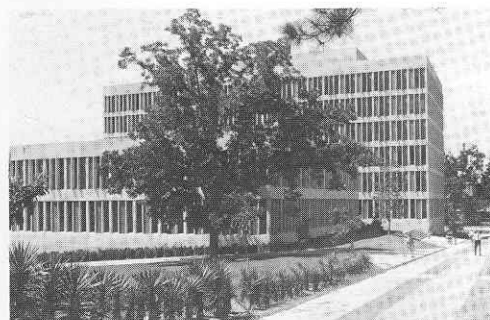
Our success in athletics is due as well to the remarkable response of Seminole fans, whose enthusiastic support has never failed to inspire our coaches and players to demonstrate the best in sportsmanship and skill on the playing field.

Let me say a further word about community support. Your presence here today indicates that we have it in significant measure, and for that we are deeply grateful. We shall continue to solicit the support of this community and, indeed, all of Florida and beyond, for it is an essential ingredient in the recruiting of athletes, in scheduling, and in the all-important area of financial support. You may be certain that those of us at the University will do everything we can to merit the continued support and loyalty of all.

**— STANLEY MARSHALL  
PRESIDENT  
FLORIDA STATE UNIVERSITY**

**WELCOME To the South's**

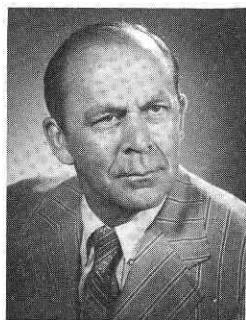
**Friendliest Campus . . .**



**From One  
Seminole Fan  
To Another . . .**



**Dr. Stanley Marshall**



Assistant AD  
RAY BICKERSTAFF



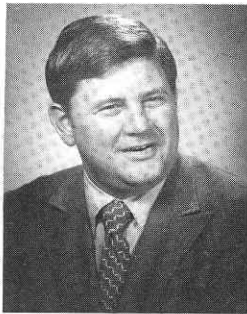
Business Manager  
DOUG MESSER

# ATHLETIC FAMILY



Athletic Director **Clay Stapleton**

## ADMINISTRATIVE STAFF



**JIM OLSEN**  
Seminole Club



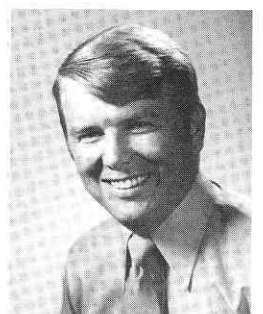
**CLAUDE THIGPEN**  
Ticket Manager



**LONNIE BURT**  
Sports Info Director

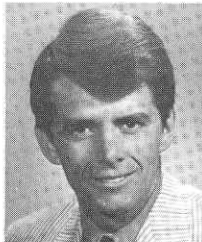


**HANK SCHOMBER**  
Ass't. SID



**DAVE WAGNER**  
Academic Advisor

## HEAD COACHES



**SCOTT BRISTOL**  
Tennis



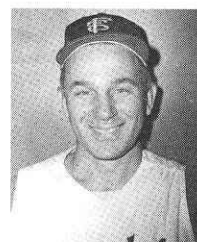
**HUGH DURHAM**  
Basketball



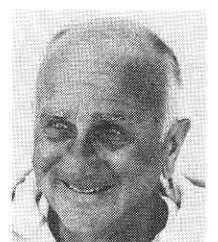
**SCOTT FLETCHER**  
Golf



**MIKE LONG**  
Track



**JACK STALLINGS**  
Baseball



**BIM STULTS**  
Swimming

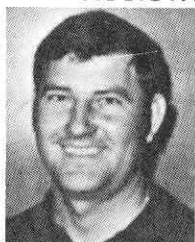
## ASSISTANT COACHES



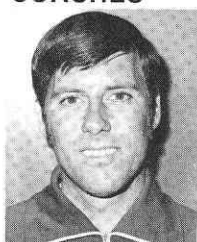
**BILL BOLTON**  
Basketball



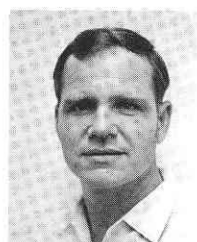
**PAUL DIRKS**  
Baseball



**MORRIS MCHONE**  
Basketball



**DICK ROBERTS**  
Track



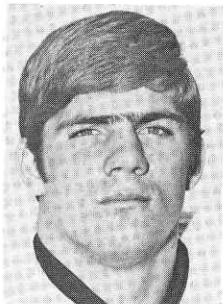
**COREY VAN FLEET**  
Swimming



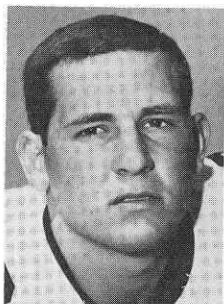
**CHARLIE DURBIN**  
Cinematographer



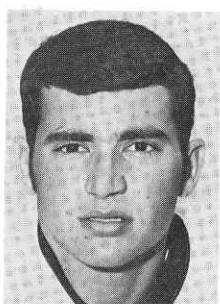
# Seminole Seniors



**RICHARD AMMAN — DT**  
Cocoa Beach — Business



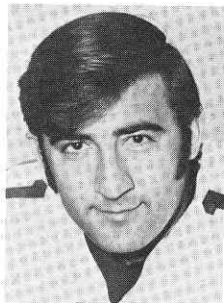
**ROBERT ASHMORE — DB**  
Tallahassee — Pre-Med



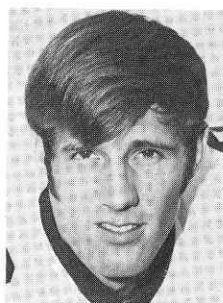
**DUANE CARRELL — Punt**  
Washington, D.C. — Marketing



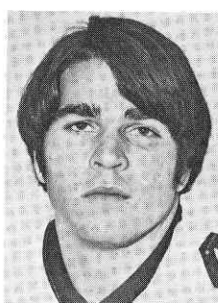
**RHETT DAWSON — WR**  
Valdosta, Ga. — Criminology



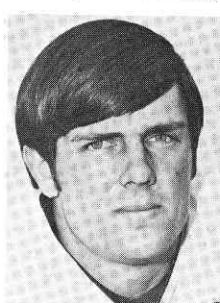
**FRANK FONTES — PK**  
Perth Amboy, N.J. — Phys. Ed.



**KENT GAYDOS — WR**  
Dallas, Tex. — Public Relations



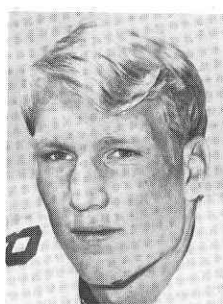
**GUY GLISSON — LB**  
Tampa — International Affairs



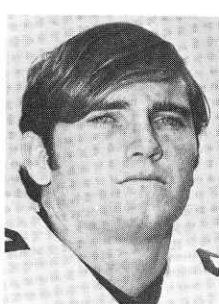
**BUDDY GRIDLEY — TE**  
Tallahassee — Pre-Med



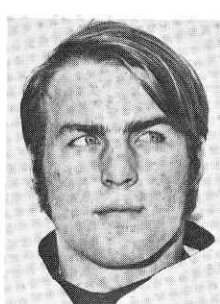
**BILL HENSON — DT**  
Hyattsville, Md. — Phys. Ed.



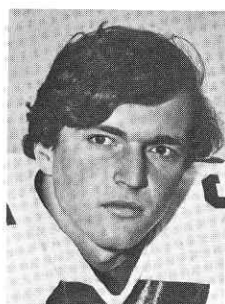
**JAMES JARRETT — RB**  
Elizabethton, Tenn. — Business



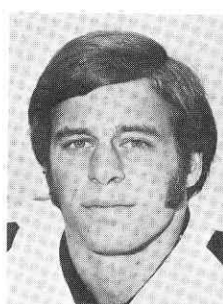
**JOHN LANAHAN — DB**  
Jacksonville — Management



**PAUL MAGALSKI — RB**  
Garfield Heights, Ohio — Criminology



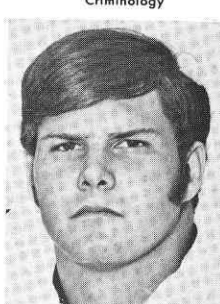
**J. W. MCKINNIE — OG**  
Macon, Ga. — Management



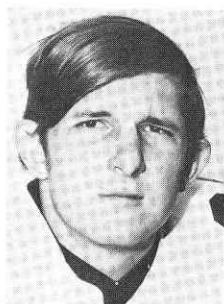
**JOHN MONTGOMERY — DB**  
Jacksonville — Business



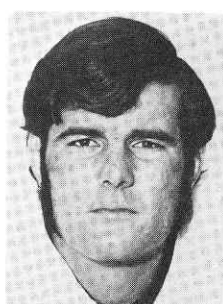
**ARTHUR MONROE — RB**  
Quincy — Pre-Med



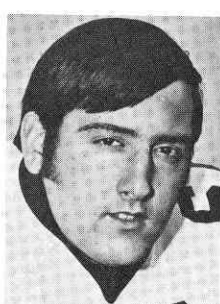
**BILL RIMBY — OT**  
St. Petersburg — Marketing



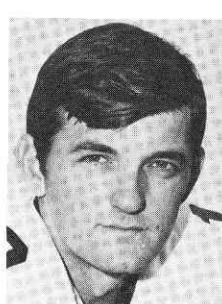
**BILL SHAW — OT**  
Marietta, Ga. — Recreation



**JAY STOKES — OG**  
Sanford — Management



**JOE STRICKLER — OT**  
Avon Park — Math



**FRANK WHIGHAM — QB**  
Sanford — Pre-Law

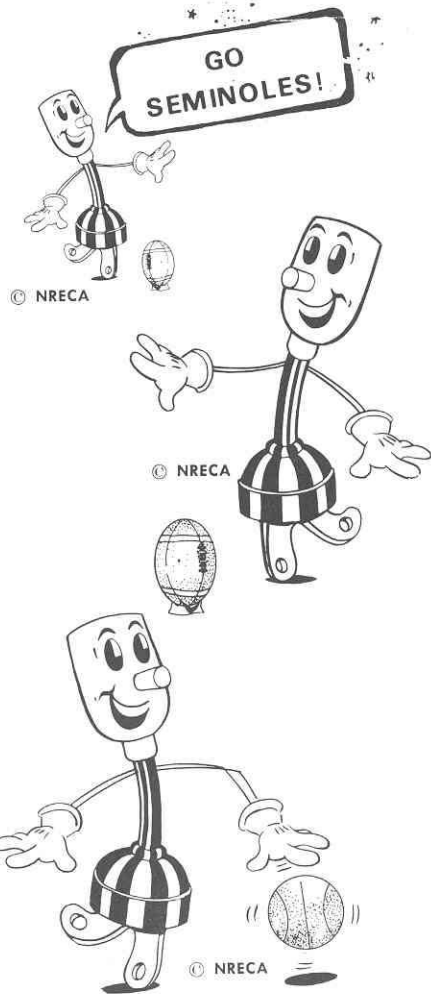


**TEC**  
**TALQUIN**  
**ELECTRIC**  
**COOPERATIVE, INC.**

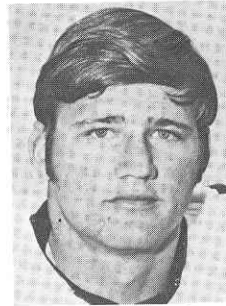
"OWNED BY THOSE WE SERVE"

IN

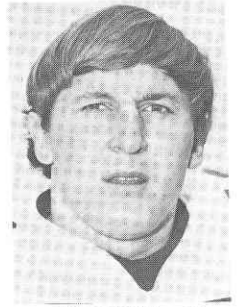
GADSDEN, LEON, LIBERTY  
 AND WAKULLA COUNTIES



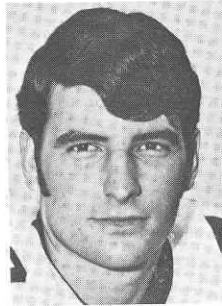
**LIVE BETTER ...**  
**ELECTRICALLY**



**ALLEN DEES — C**  
 Lakeland — Criminology



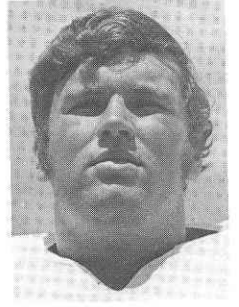
**JIM DUNDALA — LB**  
 Morrisville, Pa. —  
 Social Science Ed.



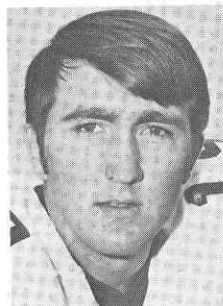
**SHANE GIBBS — OG**  
 Bay Minette, Ala. —  
 Business Admin.



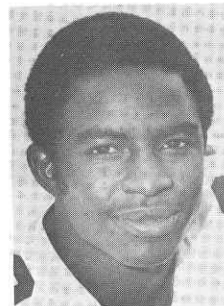
**MIKE GLASS — TE**  
 Tampa — Business



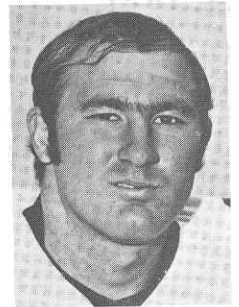
**DAN DANIELS — OT**  
 Pensacola — Business Admin.



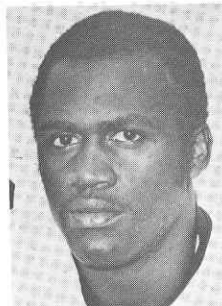
**GARY HUFF — QB**  
 Tampa — Accounting



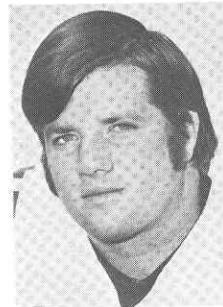
**CHARLIE HUNT — DE**  
 Jacksonville — Elementary Ed.



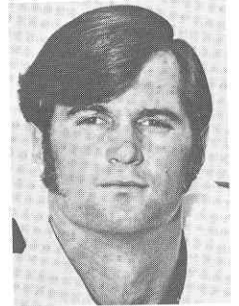
**HOWARD JACOBI — DT**  
 Vero Beach — Phys. Ed.



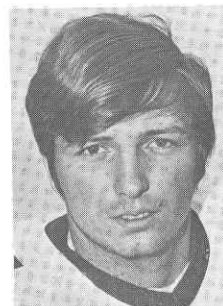
**EDDIE McMILLAN — DB**  
 Tampa — Criminology



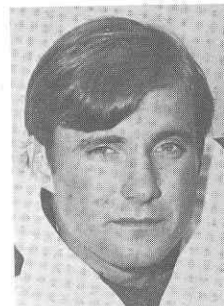
**ROGER MINOR — OT**  
 Delray Beach — Business Admin.



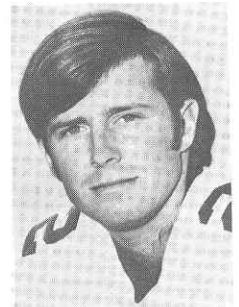
**CLINT PARKER — LB**  
 Daytona Beach — Business Admin.



**GARY PARRIS — TE**  
 Vero Beach — Recreation

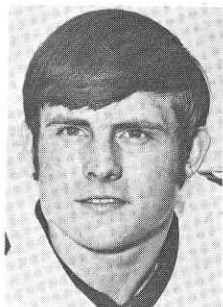


**RON RATLIFF — DB**  
 West Palm Beach —  
 Hotel & Restaurant Mgt.

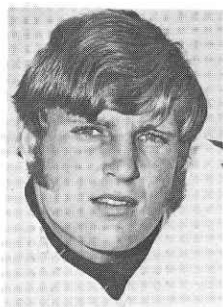


**BARRY SMITH — WR**  
 Miami — Social Studies Ed.





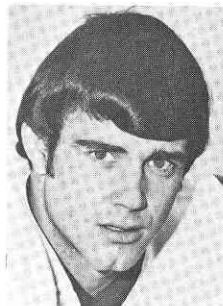
**DAVID SNELL — DB**  
Slocumb, Ala. — Business Admin.



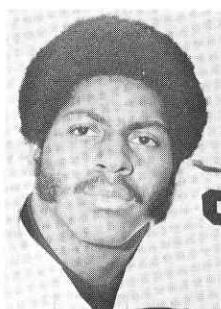
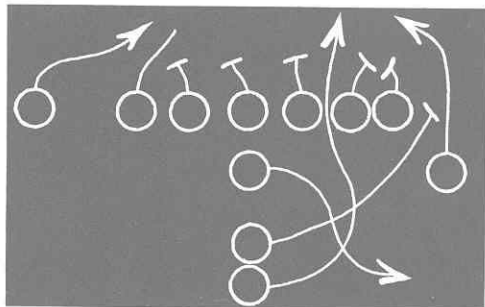
**LARRY STRICKLAND — LB**  
Tallahassee — Accounting



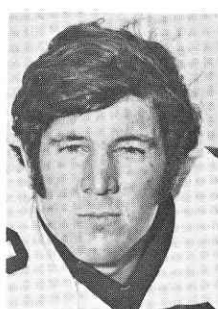
**JAMES THOMAS — DB**  
Macon, Ga. — Business Admin.



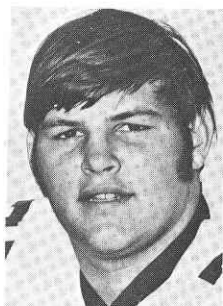
**DAN WHITEHURST — LB**  
Adel, Ga. — Criminology



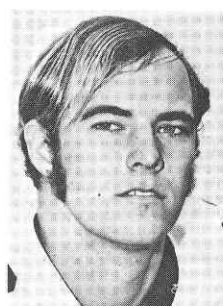
**ROBERT ANDERSON — DT**  
Tifton, Ga. — Business



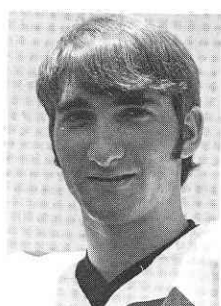
**PHIL ARNOLD — OG**  
Hollywood — Business Admin.



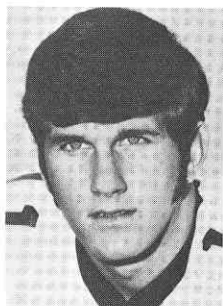
**KENT CORRAL — DE**  
Tampa — Architecture



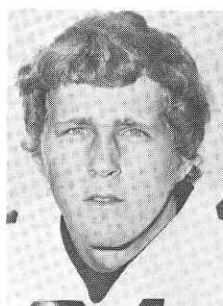
**ED DAVIS — WR**  
Lakeland — Business Admin.



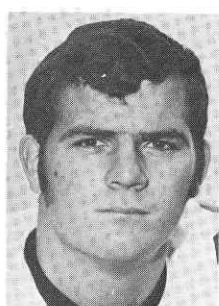
**DANO FIORE — WR**  
Chattahoochee — Pre-Med



**FRED GEISLER — QB**  
Orlando — Business



**JOE GOLDSMITH — WR**  
Lakeland — Business



**STEVE HARDIN — RB**  
Boynton Beach — Phys. Ed.



GOING  
PLACES  
?

**ATHENS, GEORGIA?**

**ATHENS, GREECE?**

**NEW YORK? NASSAU? NEPAL?**



**No Charge For Our Services**



**Tickets - Reservations  
At Printed Rates**



**TRAVEL IS OUR PROFESSION**



**MARION HAY, PRESIDENT  
TOM LYLE**

**TALLAHASSEE TRAVEL  
AND TOURS, INC.**

**Formerly Hay Travel Service  
Established 1930**

**CALHOUN AT CALL STREET  
TELEPHONE 224-4161**



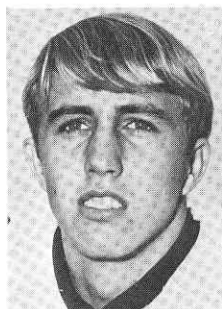
# Go Seminoles

**We'll help all we can**

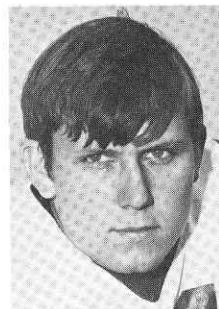
## **Tallahassee Automobile Dealers Association**

ALFORD CHEVROLET CO.  
PROCTOR & PROCTOR, INC.  
CAPITAL LINCOLN-MERCURY, INC.  
BOB DRAKE DODGE, INC.  
PALMER-HARRELL BUICK CO.  
CAPITAL CHRYSLER-PLYMOUTH, INC.  
TALLAHASSEE MOTORS, INC.  
KINNEBREW MOTORS, INC.  
MINGLEDORFF MOTORS, INC.

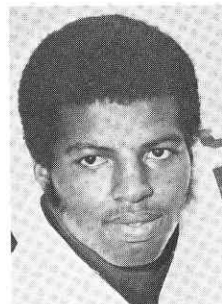
*Associate Members:* Capital City First National Bank; Tallahassee Bank and Trust; Lewis State Bank; Peoples Bank; Parkway National Bank; Tallahassee Democrat.



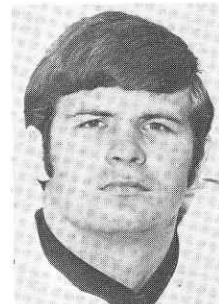
**BUZZY LEWIS — DB**  
Bristol — Math



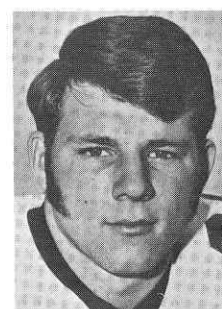
**DAVID MILES — LB**  
Tallahassee — Business



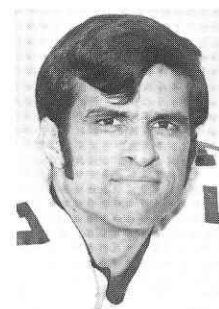
**JOHN MURPHY — LB**  
Albany, Ga. — Business



**BRENT NORRIS — RB**  
Thomaston, Ga. — Industrial Arts



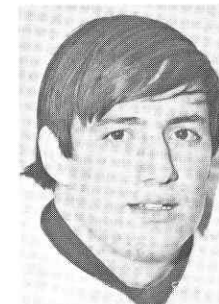
**RICK OREAIR — RB**  
Jacksonville — Business Admin.



**STEVE BRATTON — LB**  
Oviedo — Phys. Ed.



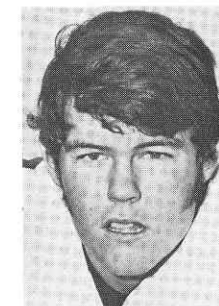
**OSCAR ROBERTS — RB**  
Ocala, Ga. — Business Admin.



**ANDY SCHMIDT — LB**  
Brandon — Criminology



**RANDY SHIVELY — DB**  
St. Petersburg — Business

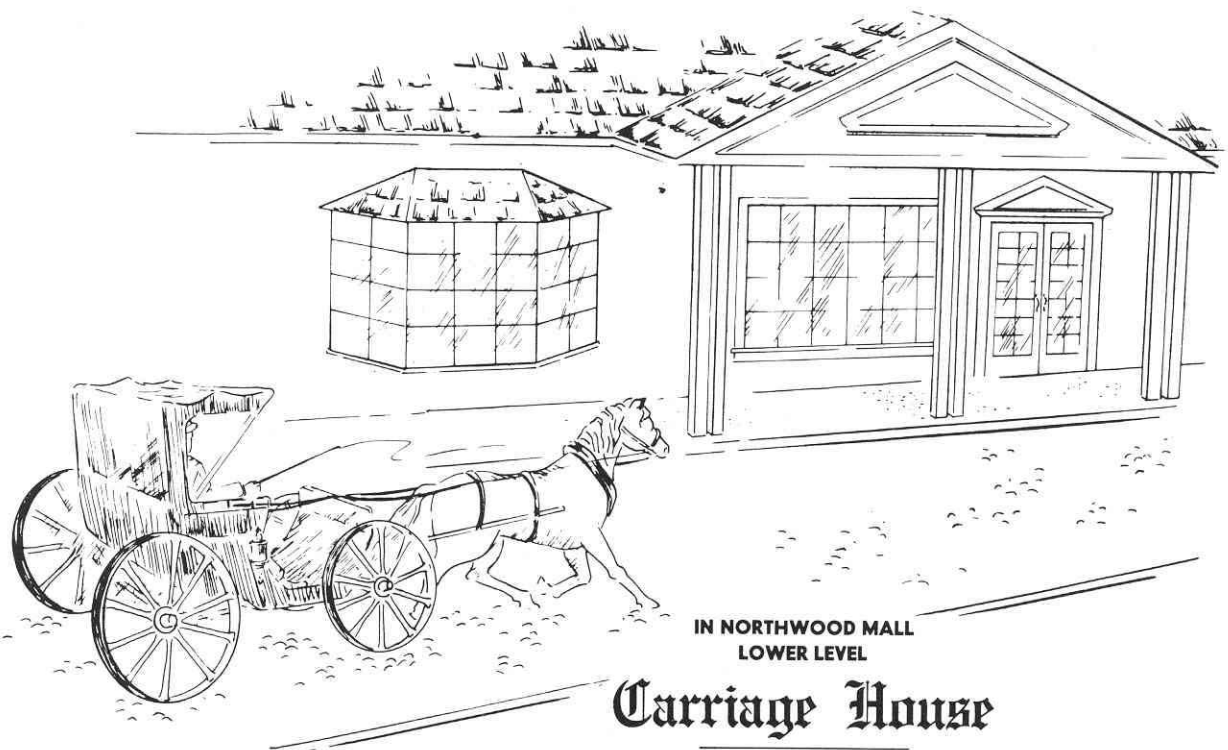


**DON SPARKMAN — OT**  
Jacksonville — Business

# THE FOOTBALL STAFF



Front Row (left to right): Doug May, Ass't. Trainer; Bill Canty, Bob Harbison, Head Coach Larry Jones, Steve Sloan, Don Fauls, Head Trainer. Back Row (left to right): Frank DeBord, Equipment Manager; Gene Henderson, Bill Parcells, Mike Pope, John Devlin, Pat Hodgson.



IN NORTHWOOD MALL  
LOWER LEVEL

**Carriage House**

RESTAURANT & LOUNGE

TALLAHASSEE  
PHONE 385-7612



## HEAD COACH LARRY JONES



Larry Jones is the sixth man to lead Florida State's modern football fortunes and has already shown himself to be the most energetic of all Tribe coaches.

The youthful Jones had no sooner accepted his appointment from President Stanley Marshall, than he was out firming up his first two signees. He has been on the go ever since.

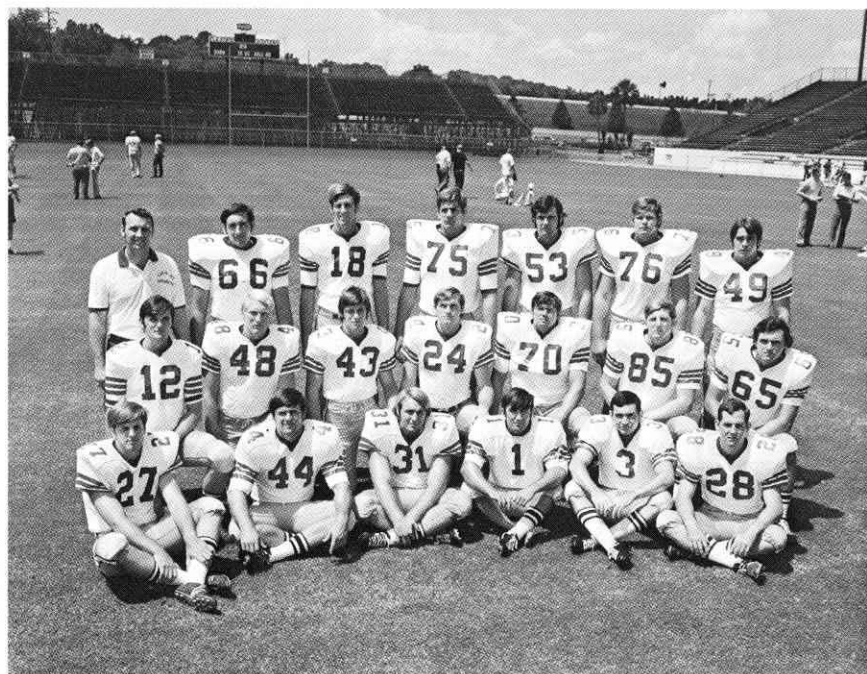
The first task was to set up a coaching staff and Coach Jones accomplished that with outstanding success. He has brought to Florida State some of the most talented young coaches in the country.

A native of Arkansas, Jones played his college ball at LSU. He joined Coach Paul Dietzel's coaching staff the day he graduated and went with him to Army and South Carolina. In 1970 he took a position with Bill Battle at Tennessee and developed the Sugar Bowl Champion's fine defense.

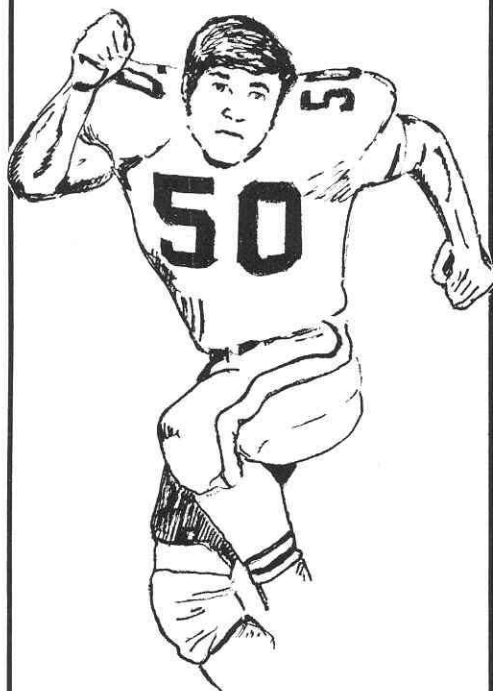
Larry and his wife, Judy, have three children, Bruce 9, Kevin 7, and Laura 5.

## FLORIDA STATE SENIORS

Front Row (left to right): Arthur Munroe, Buddy Gridley, Paul Magalski, Frank Fontes, Duane Carrell, Robert Ashmore. Second Row: Frank Whigham, James Jarrett, John Montgomery, John Lanahan, Bill Henson, Bill Shaw, J.W. McKinnie. Third Row: Head Coach Larry Jones, Joe Strickler, Kent Gaydos, Richard Amman, Jay Stokes, Bill Rimby, Guy Glisson. Not pictured: Rhett Dawson.



**GOOD LUCK  
THIS SEASON**



**FROM THE NATION'S  
LARGEST RETAILER**  
of

**MOBILE HOMES**



**154 SALES CENTERS**  
in

**10 STATES**

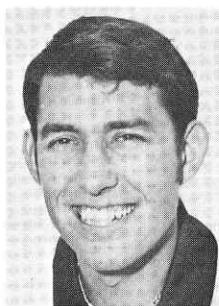
**and GROWING**

LISTED ON AMERICAN STOCK EXCHANGE

## FLORIDA STATE

### STEVE SLOAN

First Assistant and Head of Offense



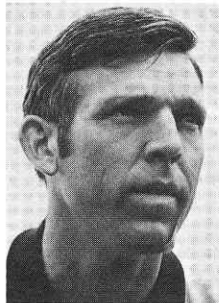
Considered one of the brightest young offensive coaches in the business, Steve came to Florida State after three years under Bear Bryant at his Alma Mater, Alabama. He is Coach Larry Jones, chief assistant and in charge of the offense. On the field, his duties have him working with the quarterbacks and running backs.

An All-America at Alabama, Sloan led the Crimson Tide to bowl games in 1963, '64 and '65. In the latter two seasons, the Tide was National Champion. After two seasons in the National Football League (Atlanta), he returned to 'Bama to work with Bryant.

A native of Cleveland, Tenn., he is married to the former Brenda Fan, also of Cleveland. They have one son.

### BILL CANTY

Freshman Coach



Bill comes to the Seminoles after eight years as an assistant at his Alma Mater, Furman. The Pascagoula, Miss., native joined the Paladin staff after graduating in 1962.

At Florida State his primary responsibility will be to head the freshman unit. Unlike recent years, when the freshmen have been used mainly as a "scout squad" for the varsity, the frosh, this season, are on their own. Canty's big chore will be to familiarize the newcomers to the Seminoles' system and develop a winning spirit among them.

Bill is the older brother of Bob Canty, who captained the Seminole baseball team in 1968. Bill is married to the former Ann Lockridge of Delta City, Miss. They have two children.

### JOHN DEVLIN

Defensive Ends and Tackles



Seminole fans are well acquainted with John's coaching abilities, even though this will be the Norristown, Pa., native's first season in Tallahassee. He comes to the Tribe from Virginia Tech where he helped mold the Gobbler defenses which caused the Seminoles so much trouble.

John will head up the Seminoles' defensive "front wall." It is actually the second time that the Former West Chester State College standout has worked with Coach Larry Jones. Both

were assistants under Paul Dietzel at the U.S. Military Academy in the mid-Sixties.

A former Army staff sergeant, John married Irma Kleeman of Regensburg, Germany. They have four children.

### BOB HARBISON

Interior Offensive Line



Coach Larry Jones calls Harbie "Mr. Florida State." The former Indiana star has spent his entire coaching career at Florida State and that 23-year period includes all but the first season of the Seminoles' modern football history.

This year Bob switches from defense to offense where he will be in charge of the offensive line. But his value does not stop on the playing field. His general knowledge of the game and outstanding recruiting ability have been an invaluable asset to the

five head coaches he has worked under.

Bob and his wife, the former Jane McEntee of Washington, D.C., have four children.



# ASSISTANT COACHES

## GENE HENDERSON

Head of Defense, Defensive Backs

Like Steve Sloan, Gene learned to play football under Bear Bryant. After two seasons of junior college ball, the Sonora, Tex., native transferred to Texas A & M where he was a member of the 1954 squad which survived the infamous early fall workouts at Junction, Texas.

His collegiate coaching experience includes stints at Texas Tech and TCU. He headed the TCU defense last year, before coming to Florida State.

Gene and his wife, the former Sue Wyatt of Sonora, have four children.



## PAT HODGSON

Wide Receivers and Tight Ends

An All-SEC receiver at Georgia, Pat is perhaps best remembered for sparking the Bulldogs to an 18-17 win over defending National Champion Alabama on National TV in 1965. A key figure (he threw the pass) in the memorable "Flea-flicker" play which closed the gap to 17-16, Pat then caught the two-point conversion pass for the win.

After two years in the pros, he returned to Georgia as an assistant coach, heading up the freshman offense last year.

The Columbus, Ga., native was All-SEC in 1964 and '65 and led the conference in receiving in 1963.

Pat is married to the former Nancy Williams of Athens, Ga. They have two children.



## BILL PARCELLS

Linebackers

This is Bill's second season with the Seminoles, as he is one of two holdovers from last year's staff (the other being Bob Harbison).

The Oradell, N.J., native came to the Tribe last year after four years at Army where he developed some of the Cadets' finest linebacking corps. He has also had coaching experience at his Alma Mater, Wichita State and Hastings College.

At Wichita, Bill was twice an All-Missouri Valley Conference selection, playing guard, tackle and linebacker. Following his graduation he was a fourth round pro-draft choice.

Bill is married to the former Judy Goss of Wichita. They have three children.



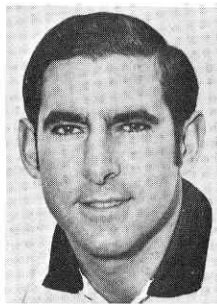
## MIKE POPE

Director of High School Relations

Mike's duties keep him off the field and "on-the-go," but his task is a crucial one as he heads up the Seminole recruiting operation.

The Monroe, N.C., native stepped into the position this year, after serving a season as a graduate assistant for the Tribe last year. Mike played his college ball at Lenior Rhyne, where he was a quarterback and fullback in the Bear's single wing backfield. He had several highly successful seasons as a high school coach before coming to Florida State in 1970.

Mike is married to the former Lee Lambie of Arlington, Va.



Textbooks  
\*  
Art and  
School Supplies

\*  
**FSU**  
Sweatshirts  
T Shirts

Glassware  
Mugs

\*  
**Seminole  
Uprising**



SUPPORTED BY



WHEN YOU THINK OF BOOKS, THINK OF BILL'S

107 SOUTH COPELAND ST.  
TALLAHASSEE-FLA. 32304

# TODAY'S GAMES

By Lonnie Burt

Sports Information Director

This will be the fifth meeting between Florida State and Mississippi State with the Seminoles having won the previous four.

However, each contest has been a battle with Florida State coming from behind for a 20-17 victory in 1969.

The Southeastern Conference Bulldogs are 1-3 so far this season with their lone win a 13-10 triumph over Florida. They bowed to Oklahoma State 26-7, Vanderbilt 49-19 and to Georgia last Saturday afternoon 35-7.

Mississippi State has all 11 defensive starters returning from a 1970 club which went 6-5, including victories over Georgia, Ole Miss and Texas Tech.

The Bulldog secondary is considered one of the SEC's best. Juniors Frank Dowsing and Kent Phares are speedsters. Dowsing runs the 100 in 9.6 and Phares in 9.9.

However, the Mississippi State offense has had its problems although the Bulldogs ground game was the most effective weapon against Florida. Tailback Louis Grubbs is State's top rusher. Junior college quarterback Hal Chealander directs the Bulldog attack.

The undefeated Seminoles are riding a four-game winning streak with victories over Southern Mississippi, Miami, Kansas and Virginia Tech. Florida State hadn't won its first four games since the 1964 season.

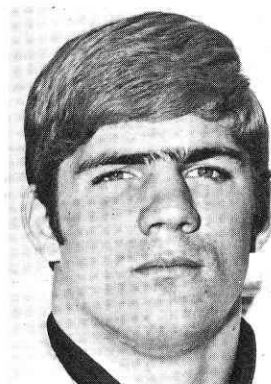
Rhett Dawson needs five more catches to move ahead of Fred Bilet-nikoff as Florida State's second all-time pass receiver. The Valdosta, Ga., senior goes into this game with 96 career receptions.

The Seminole defensive has given up an average of 9 points per game and hasn't had a touchdown scored on it during the second half.

## SEMINOLE CAPTAINS



Arthur Munroe



Richard Amman

## OUR TEAM SAYS . . . . . "LET'S GO SEMINOLES"



**DOWNTOWN**  
VERNON STEVENS  
Manager



**PARKWAY**  
AMOS STEVENS  
Manager



**THOMASVILLE**  
ED HORTON  
Manager

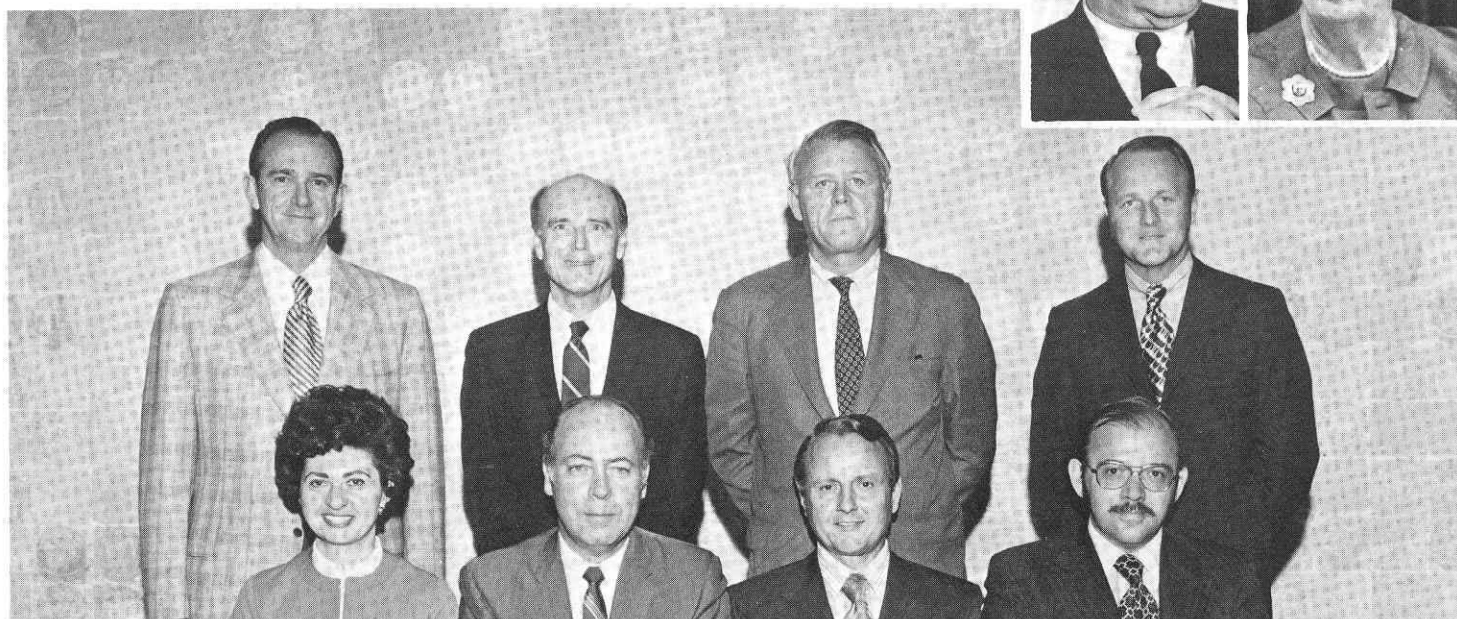


**NORTHWOOD MALL**  
NATHAN BRASWELL  
Manager

**STAFFORD QUALITY JEWELERS**



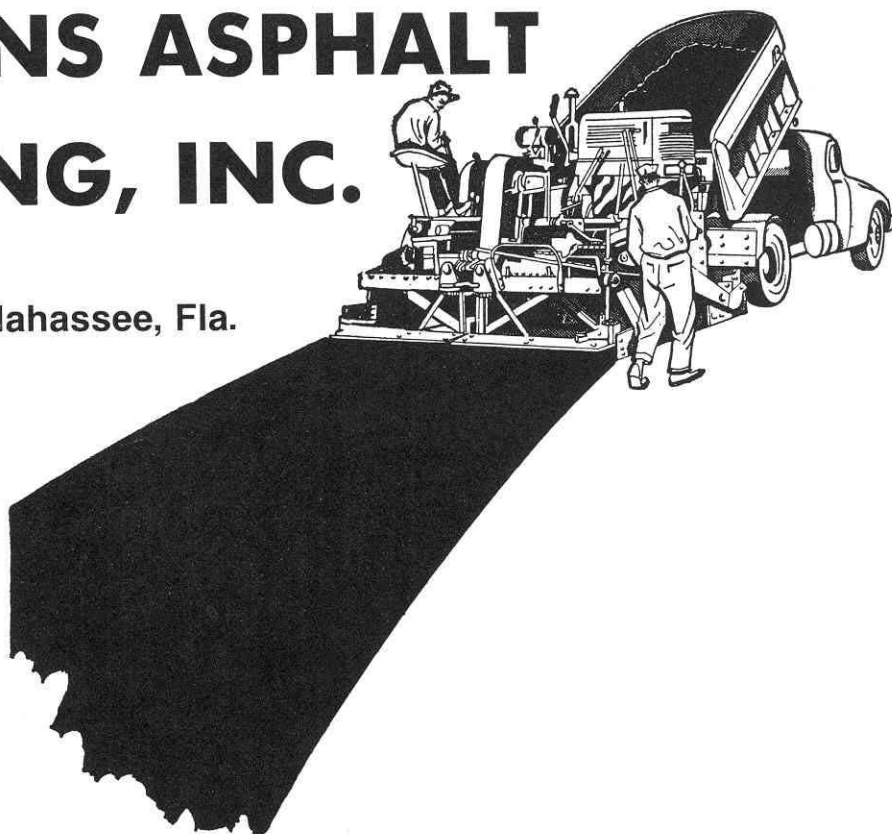
## FLORIDA BOARD OF REGENTS AND CHANCELLOR



Members of the Florida Board of Regents shown here are: Front Row, left to right, Miss Elizabeth A. Kovachevich, St. Petersburg; Dr. Louis C. Murray, Orlando, Vice Chairman; D. Burke Kibler, III, Lakeland, Chairman; Julius F. Parker, Jr., Tallahassee; Back Row, left to right, E. W. Hopkins, Jr., Pensacola; Dr. Robert B. Mautz, Chancellor; J. J. Daniel, Jacksonville; and Marshall M. Criser, Palm Beach. Shown in the inserts are Regents Chester H. Ferguson, Tampa, and Mrs. E. D. Pearce, Miami.

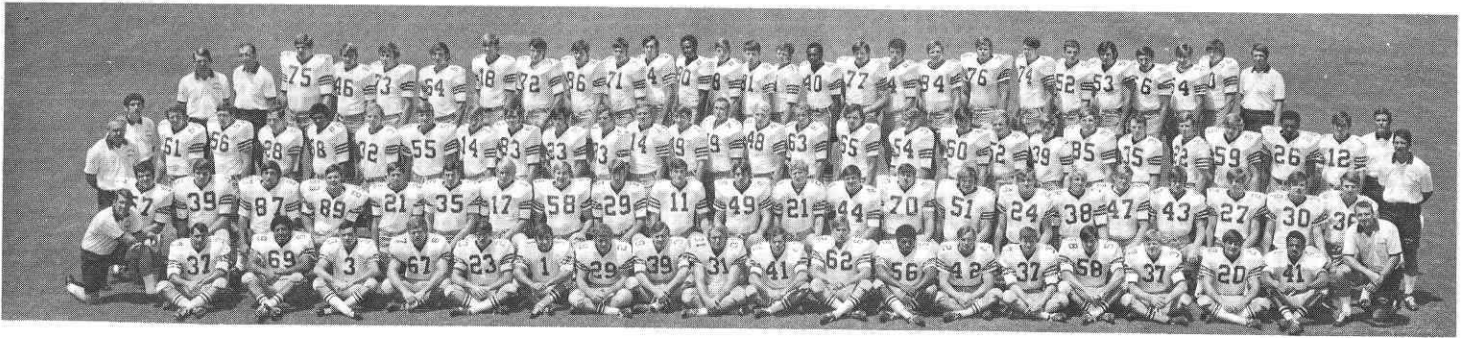
# HAMMONS ASPHALT PAVING, INC.

Tallahassee, Fla.



Contributor: Florida State University Athletic Scholarship Fund

# THE 1971 SEMINOLES

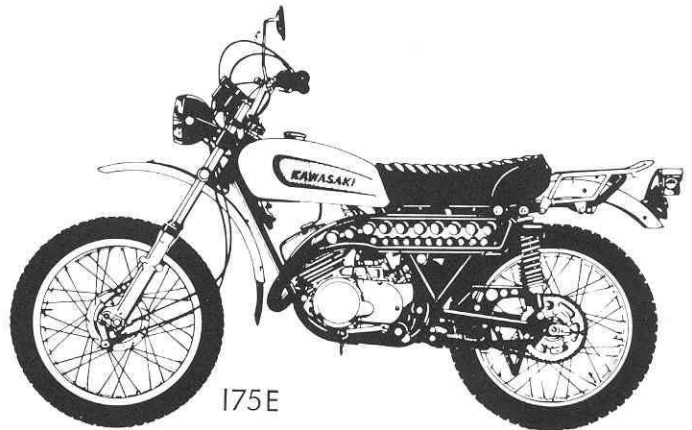


FIRST ROW — Left to Right: Coach Sloan, Ajhar, Anderson, Carrell, Drews, Eddy, Fontes, Howton, Jones, Magalski, McGowan, Miles, Murphy, Ratliff, Roberts, Schmidt, M. Smith, Snell, Joe Thomas, Head Coach Larry Jones. SECOND ROW — Coach Harbison, Bratton, Burgess, Castleberry, Corral, Cowart, Dowey, Downey, Dundala, Fiore, Geisler, Glisson, Goldsmith, Gridley, Henson, Howell, Lanahan, Lewis, McNish, Montgomery, Munroe, Norris, Oreair, Coach Hodgson. THIRD ROW — Coach Pope, Arnold, Abbott, Ashmore, Cooper, Davis, Dees, Deming, Doyle, Gould, Hardin, Hopkins, Huff, Jacobi, Jarrett, Macaulay, McKinnie, Ottman, Parker, Rainey, Sargent, Shaw, Shively, B. Smith, Strickland, James Thomas, Whigham, Coach Henderson. FOURTH ROW — Coach Canty, Coach Devlin, Amman, Bengtson, Daniels, DeMaria, Gaydos, Gibbs, Glass, Hensley, Howard, Hunt, Lee, Lindsey, Loucks, McMillan, Minor, Musser, Parris, Rimby, Sparkman, Stephens, Stokes, Strickler, Walter, Whitehurst, Coach Parcells.

TALLAHASSEE'S SPORT CYCLE  
HEADQUARTERS



SALES & SERVICE ON MOST MAKES



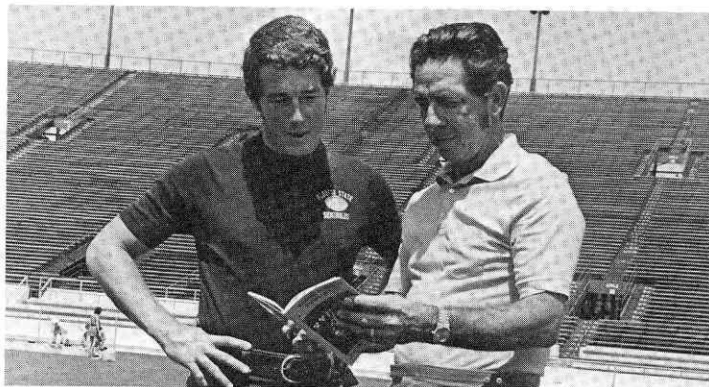
W. M.  
POGGIE  
owner

Just Past Tallahassee Jr. College W. Pensacola

**576-6326**



<u>STATION</u>	<u>CITY</u>	<u>STATION</u>	<u>CITY</u>
WKAT	Miami	WTRL	Bradenton
WVOG	Boca Raton - Palm Beach	WGBC	Chipley
WJAX	Jacksonville	WCNH	Quincy
WSUN	St. Petersburg - Tampa	WDSR	Lake City
WCOA	Pensacola	WTRR	Sanford
WPCF	Panama City	WRUF	Gainesville
WTNT	Tallahassee	WSRA	Milton
WLAK	Lakeland	WTTB	Vero Beach
WWQS	Windemere - Orlando	WMOP	Ocala
WSIR	Winter Haven	WTYS	Marianna
WROD	Daytona Beach	WFSH	Valpariso
WINK	Ft. Myers		



**TOMMY WARREN      BO MITCHELL**

Florida State's football games, whether played at home or away, will be heard throughout "Seminole Territory" on the Seminole Football Network.

With Tallahassee's WTNT acting as the originating station, 30 stations will carry every play to Seminole fans in Florida, South Georgia and South Alabama. In addition, several Florida State games will be heard from time to time as "Pick of Dixie" games.

Heading up the Seminole Network broadcast team once again will be Bo Mitchell. A veteran of more than 20 years broadcasting, Mitchell will be in his ninth season as the Seminoles' play-by-play man. In addition to Seminole games, Mitchell has also done play-by-play for the AFL All Star game, Senior and Tangerine Bowl games.

Joining the former Florida Sportscaster of the Year and station manager of WTRL in Bradenton will be former Seminole quarterback Tommy Warren. The Miami native moves from the playing field to the broadcast booth after directing the Tribe to a 7-4 season last year. Now enrolled in Florida State's Law School, Warren will serve as color man.

# SEMINOLE FOOTBALL NETWORK

Follow The Seminoles

ON WTNT 1270 ON YOUR DIAL

Brought to you by



AND YOUR NEIGHBORHOOD TEXACO DEALER

and by

GOLDEN FLAKES POTATO CHIPS

THE TALLAHASSEE BANK AND TRUST COMPANY

# FOOTBALL STAFF



## FRANK DEBORD

Equipment Manager

This will be Frank's second season as the Seminoles' equipment chief after serving three years as the assistant.

A native of Marion, Va., the Quincy resident attended Virginia Tech where he lettered in football and wrestling before receiving his B.S. degree in 1942.

Frank was an assistant football coach at Franklin, Va., High School and also played two seasons with Norfolk in the Continental League.

He is not only in charge of all the Seminoles' grid equipment, but also he directs the practice field's upkeep as well.

Frank and his wife, the former Marian Bradshaw of Franklin, Va., have three children. A fourth, David, was a member of the Marshall football team killed in last fall's tragic air crash.



## DON FAULS

Head Trainer

"Rooster," as he is affectionately known by present and former Seminoles alike, will be starting his 18th season at Florida State this fall.

The Ithaca, N.Y., native started his training career in the St. Louis Cardinals' minor league system, working with the Greensboro, N.C., team in 1950-51 and with the Omaha, Neb., club from 1952-54.

Don was honored by being named head trainer for the United States Pan-Am Games team in 1963 and is currently on the Olympic Trainers' Selection Committee.

He lettered in baseball and basketball while attending Ithaca College in his hometown.

Don's success can be underscored by the large number of his former assistants who have gone on to head jobs at other institutions.

Don and his wife, the former Marguerite Morgan of Naples, N.Y., have three children.



## DOUG MAY

Assistant Trainer

This will be his second season as Don Fauls' assistant.

Since coming to Florida State, Doug has traveled with the Seminole basketball and baseball teams.

A graduate of Ole Miss, he served as a student trainer while attending college, handling the Rebels' freshman football team along with the varsity basketball and baseball clubs.

Doug is married to the former Cissy Knott of Yazoo City, Miss.

## Nic's Toggery

115 SOUTH MONROE STREET

PHONE 222-0687

TALLAHASSEE, FLORIDA . 32301

Official Seminole Blazer.  
Gold or Garnet Color, in  
Double Knit . . . \$65<sup>00</sup>



Official FSU Ties, \$4.50  
Tie One On! Garnet Back-  
ground with Seminole Mono-  
gram. 100% Dacron.



Seminole Clock \$25.00

(Battery Operated)

Also available, All Major Colleges  
in their own Logo.

MAIL ORDER

NAME \_\_\_\_\_  
ADD. \_\_\_\_\_  
PHONE \_\_\_\_\_  
ITEM \_\_\_\_\_  
COAT SIZE \_\_\_\_\_



# Welcome Alumni

President  
**Donald E. Stone**  
(Coral Gables)



President-Elect  
**Arthur E. Hempel, Jr.**  
(St. Petersburg)



Secretary  
**Janet Wells**  
(Tallahassee)

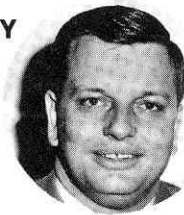


FLORIDA STATE UNIVERSITY

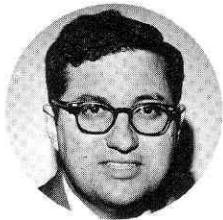
BOARD OF DIRECTORS

ALUMNI ASSOCIATION

Treasurer  
**Hans W. Tews**  
(Fort Pierce)



Immediate  
Past President  
**James E. Joanos**  
(Tallahassee)



Executive Director  
**Thomas A. Waits**  
(Tallahassee)



## DISTRICT VICE PRESIDENTS

**Nelson A. Italiano**  
Tampa  
District I

**George A. Pierce, Jr.**  
Jacksonville  
District II

**Johnny A. Fortune**  
Ft. Walton Beach  
District III

**Walter Leon Revell**  
Hialeah  
District IV

**E. Tracy Harrison**  
Winter Park  
District V

**Benjamin F. Bailey, III**  
Vero Beach  
District VI

**Edward J. Kercher**  
Bradenton  
District VII

**William T. Swigert**  
Ocala  
District VIII

**Carmelo Battaglia**  
Tucker, Georgia  
Out Of State

**Ronald Schomburger**  
Tallahassee  
District IX

**Thomas L. Clarke, Jr.**  
Lakeland  
District X

**James W. Aphthorp, Jr.**  
Tallahassee  
At Large

**Floyd D. Jordan**  
Tequesta  
At Large

## CLASS REUNIONS

Honor Class  
1921

**Mildred Hall Sharpe**  
Miami, Florida

1926 — **Martha Page Parkhill**  
Cashiers, North Carolina

1941 — **Betty Nickinson Chitty**  
Sewanee, Tennessee

1956 — **James E. Joanos**  
Tallahassee, Florida

1931 — **Mary B. Settle**  
Arlington, Virginia

1946 — **Martha Jane Brown Rutland**  
Clearwater, Florida

1961 — **Carl H. Butler, III**

1936 — **Kitty Blood Hoffman**  
Tallahassee, Florida

1951 — **Jean Sayer Wright**  
Savannah, New York

1966 — **R. Thomas Farrar**  
Cambridge, England

# 1971 CHEERLEADERS



Wayne Tate      Roger Russell      Will Law (Capt.)      Bill Allison      Bob McDaris  
                  Diane Avery  
                  Hally Stein  
                  Ginger DeLong  
                  Diane Lasota  
                  Mary Webb Ellis

## PRESCRIPTIONS

- COSMETICS
- GREETING CARDS
- TOYS
- FILMS & CAMERAS



"BUDDY STEWART"  
 "WORKING FOR BETTER  
 COMMUNITY HEALTH"  
 HAVE YOUR DOCTOR CALL US

- VITAMINS
- CANDY
- GIFTS
- HOSPITAL SUPPLIES

224-5011

NO CHARGE FOR  
 DELIVERY SERVICE

UNIVERSITY  
*Rexall*  
 PHARMACY  
 W. Tenn. & High Road

CITY WIDE AND  
 SURROUNDING AREAS



# MISSISSIPPI STATE

## Game Captains:

OFFENSE			DEFENSE		
SE	87	Tommy Strahan	LE	93	Bob Armstrong
	12	Steve Natale		81	Jim McAlpin
QT	79	Roger Cook	LT	72	Jerry Conrad
	66	Rube Rhea		78	Greg Fountain
				73	Chuck Jordan
QG	71	Joe Edwards	RT	86	Mike Eaton
	63	Andy Brislin		70	Jimmy Rogers Webb
	62	Danny West		75	Robert Bell
C	51	Gene Wardlaw	RE	84	Jack Hall
	56	Jim Wray		90	Bob Kimbrough
SG	65	Butch Yarbrough	LOLB	50	John David Calhoun
	60	Larry Greenlee		48	Joel Holliman
ST	77	Preston Payne	LLB	53	Chuck Dees
	74	Larry McKnight		45	Don Magee
TE	89	Eric Hoggatt		46	Frank Power
	80	Dennis Rushing	RLB	55	Jim Nelson
QB	16	Hal Chealander		68	Chick King
	7	Ronnie Everett	ROLB	43	Billy Southward
	10	Bill Baker		30	Johnny Bruce
TB	41	Lewis Grubbs	LHB	36	Ken Phares
	32	Wayne Jones		21	Buster Boatner
	42	Ronnie Jones	RHB	40	Frank Dowsing
FB	38	Dick McElroy		5	Anthony Walker
	33	Steve Stoots	SAF	31	Emile Petro
	44	Steve Whaley		28	Jimmy Patridge
FL	14	Jay Hughes			
	24	Bill Buckley			
	26	John Male			

## SPECIALISTS

Punts:	6	Lanny Sheffield
	10	Billy Baker
Placements:	58	Glen Ellis
	73	Chuck Jordan
Punt Returns:	36	Ken Phares
	40	Frank Dowsing
KO Returns:	41	Lewis Grubbs
	24	Bill Buckley

## MISSISSIPPI STATE NUMERICAL ROSTER

No. NAME, Pos.

5	Anthony Walker	S
6	Lanny Sheffield	DHB
7	Ronnie Everett	QB
10	Billy Baker	QB
12	Steve Natale	OE
14	Jay Hughes	WB
16	Hal Chealander	QB
17	David Straus	QB
21	Buster Boatner	DHB
23	Tom McElroy	TB
24	Bill Buckley	WB
28	Jimmy Patridge	S
30	Johnny Bruce	LB
31	Emile Petro	S
32	Wayne Jones	TB
33	Steve Stoots	FB
36	Ken Phares	DHB
37	Glenn Peterson	FB
38	Dick McElroy	FB
40	Frank Dowsing	DHB
41	Lewis Grubbs	TB
42	Ronnie Jones	TB
43	Billy Southward	LB
44	Steve Whaley	FB
45	Don Magee	LB
46	Frank Powers	LB
48	Joel Holliman	LB
50	John David Calhoun	LB
51	Gene Wardlaw	C
52	Joe Brabham	C
53	Chuck Dees	LB
55	Jim Nelson	LB
56	Jim Wray	C
57	Watson Pillow	DE
58	Glenn Ellis	OT
60	Larry Greenlee	OG
61	Ray Archer	OG
62	Danny West	OG
63	Andy Brislin	OG
65	Butch Yarbrough	OG
66	Rube Rhea	OG
67	Bill Enis	OG
68	Chick King	LB
69	Kenny Rogers	OT
70	Jimmy Rogers Webb	DT
71	Joe Edwards	OT
72	Jerry Conrad	DT
73	Chuck Jordan	DT
74	Larry McKnight	OT
75	Robert Bell	DT
76	Jerry Johnston	OT
77	Preston Payne	OT
78	Greg Fountain	DT
79	Roger Cook	OT
80	Dennis Rushing	OE
81	Jim McAlpin	DE
83	Bob Anger	OE
84	Jack Hall	DE
85	Bob Bozeman	OE
86	Mike Eaton	DT
87	Tommy Strahan	OE
89	Eric Hoggatt	OE
90	Bob Kimbrough	DE
93	Robby Armstrong	DE

# FLORIDA STATE NUMERICAL ROSTER

No.	Name, Pos.
1	Frank Fontes, PK
3	Duane Carrell, Punt
11	Fred Geisler, QB
12	Frank Whigham, QB
16	Frank Deming, QB
18	Kent Gaydos, WR
19	Gary Huff, QB
20	David Snell, DB
21	Joe Goldsmith, WR
22	Barry Smith, WR
23	David Eddy, WR
24	John Lanahan, DB
26	James Thomas, DB
27	Arthur Munroe, TB
28	Robert Ashmore, DB
29	Dano Fiore, WR
30	Brent Norris, FB
31	Paul Magalski, FB
32	Ed Davis, WR
33	Steve Hardin, FB
35	Randy Shively, DE
36	Rick Oreair, RB
37	Oscar Roberts, RB
38	Buzzy Lewis, DB
40	Eddie McMillan, DB
42	Ron Ratliff, DB
43	John Montgomery, DB
44	Buddy Gridley, LB
46	Brian Bengtson, PK
47	David McNish, LB
48	James Jarrett, FB
49	Guy Glisson, LB
50	Dan Whitehurst, LB
52	Reese Rainey, LB
53	Jay Stokes, OG
54	Jim Dundala, C
55	Allen Dees, C
57	Steve Bratton, LB
58	Andy Schmidt, LB
59	Larry Strickland, LB
60	Clint Parker, LB
61	Phil Arnold, LB
62	David Miles, LB
65	J.W. McKinnie, OG
66	Joe Strickler, OT
69	Bobby Anderson, DT
70	Bill Henson, DT
72	Shane Gibbs, OG
73	Dan Daniels, OT
74	Don Sparkman, OT
75	Richard Amman, DT
76	Bill Rimby, OG
77	Roger Minor, OT
79	Howard Jacobi, DT
80	Charlie Hunt, DE
82	Rhett Dawson, WR
83	Bert Cooper, DE
84	Gary Parris, TE
85	Bill Shaw, DE
86	Mike Glass, TE
87	Russell Castleberry, DE
89	Kent Corral, DE

# FLORIDA STATE

## Game Captains:

27	Arthur Munroe
75	Richard Amman

## OFFENSE

SE	82	Rhett Dawson
	32	Ed Davis
	21	Joe Goldsmith
WT	74	Don Sparkman
	77	Roger Minor
WG	65	J.W. McKinnie
	72	Shane Gibbs
C	55	Allen Dees
	53	Jay Stokes
	54	Jim Dundala
SG	53	Jay Stokes
	61	Phil Arnold
ST	66	Joe Strickler
	73	Dan Daniels
TE	84	Gary Parris
	86	Mike Glass
QB	19	Gary Huff
	12	Frank Whigham
	11	Fred Geisler
TB	27	Arthur Munroe
	31	Paul Magalski
	36	Rick Oreair
FB	48	James Jarrett
	31	Paul Magalski
	37	Oscar Roberts
FL	18	Kent Gaydos
	22	Barry Smith

## DEFENSE

LE	85	Bill Shaw
	83	Bert Cooper
	89	Kent Corral
LT	70	Bill Henson
	79	Howard Jacobi
SAM	60	Clint Parker
	44	Guy Glisson
MIKE	59	Larry Strickland
	62	David Miles
WILL	50	Dan Whitehurst
	44	Buddy Gridley
RT	75	Richard Amman
	69	Bobby Anderson
RE	80	Charlie Hunt
	57	Steve Bratton
RC	26	James Thomas
	20	David Snell
LC	40	Eddie McMillan
	38	Buzzy Lewis
ROV	24	John Lanahan
	42	Ron Ratliff
	35	Randy Shively
SAF	28	Robert Ashmore
	43	John Montgomery

## SPECIALISTS

Punts:	3	Duane Carrell
Placements:	1	Frank Fontes
Returns:	20	David Snell
	38	Buzzy Lewis
	40	Eddie McMillan



FLORIDA STATE

No.	Name	Pos.	Ht.	Wt.	Age	Class	Status	Hometown
75	Amman, Richard	DT	6-5	232	21	Senior	2VL	Cocoa Beach
69	Anderson, Bobby	DT	5-10	217	20	Soph.	Sq.	Tifton, Ga.
61	Arnold, Phil	OG	6-0	211	19	Soph.	Fr.	Hollywood
28	Ashmore, Robert	DB	6-1	181	22	Senior	2VL	Tallahassee
46	Bengtson, Brian	PK	6-3	205	21	Junior	1VL	Green Bay, Wisc.
57	Bratton, Steve	LB	6-0	200	20	Soph	Sq.	Oviedo
3	Carrell, Duane	P	5-10	176	22	Senior	2VL	Washington, D. C.
83	Cooper, Bert	DE	6-1	218	19	Soph.	RS	Tallahassee
89	Corral, Kent	DE	5-11	199	20	Soph.	Sq.	Tampa
73	Daniels, Dan	OT	6-4	250	21	Junior	JC	Pensacola
32	Davis, Ed	WR	6-1	195	20	Soph.	RS	Lakeland
82	Dawson, Rhett	WR	6-2	186	22	Senior	2VL	Valdosta, Ga.
55	Dees, Allen	C	6-2	190	21	Junior	1VL	Lakeland
16	Deming, Frank	QB	6-1	160	20	Soph	RS	Valdosta, Ga.
54	Dundala, Jim	LB	6-0	204	20	Junior	Sq.	Morrisville, Pa.
23	Eddy, David	WR	5-11	173	19	Soph.	Fr.	Miami
29	Fiore, Dano	WR	6-0	178	20	Junior	Sq.	Chattahoochee
1	Fontes, Frank	PK	5-6	155	22	Senior	1VL	Perth Amboy, N. J.
18	Gaydos, Kent	WR	6-6	212	22	Senior	2VL	Dallas, Tex.
11	Geisler, Fred	QB	6-0	189	19	Soph	Fr.	Orlando
72	Gibbs, Shane	OG	6-3	220	20	Junior	1VL	Bay Minette, Ala.
86	Glass, Mike	TE	6-3	210	21	Junior	1VL	Tampa
49	Glisson, Guy	LB	6-0	194	21	Senior	2VL	Tampa
21	Goldsmith, Joe	WR	6-0	172	19	Soph.	Fr.	Lakeland
44	Gridley, Buddy	TE	6-0	209	21	Senior	2VL	Tallahassee
33	Hardin, Steve	FB	6-1	206	20	Soph.	RS	Boynton Beach
70	Henson, Bill	DT	6-0	223	21	Senior	1VL	Hyattsville, Md.
19	Huff, Gary	QB	6-1	185	20	Junior	1VL	Tampa
80	Hunt, Charlie	DE	6-3	202	20	Junior	1VL	Jacksonville
79	Jacobi, Howard	DT	6-2	242	21	Junior	RS	Vero Beach
48	Jarrett, James	FB	6-1	208	22	Senior	2VL	Elizabethton, Tenn.
24	Lanahan, John	DB	6-0	202	22	Senior	2VL	Jacksonville
38	Lewis, Buzzy	DB	6-0	180	19	Soph.	Fr.	Bristol
31	Magalski, Paul	FB	5-11	210	21	Senior	2VL	Garfield Hts., Ohio
65	McKinnie, J. W.	OG	6-1	207	21	Senior	2VL	Macon, Ga.
40	McMillan, Eddie	DB	6-2	175	20	Junior	1VL	Tampa
47	McNish, David	LB	6-0	215	20	Junior	JC	Eustis
62	Miles, David	LB	5-10	185	19	Soph.	Fr.	Tallahassee
77	Minor, Roger	OG	6-3	233	21	Junior	1VL	Delray Beach
43	Montgomery, John	DB	6-0	182	21	Senior	2VL	Jacksonville
27	Munroe, Arthur	RB	6-0	192	22	Senior	2VL	Quincy
30	Norris, Brent	RB	6-0	199	20	Soph.	Sq.	Thomaston, Ga.
36	Oreair, Rick	RB	6-0	187	20	Soph	RS	Jacksonville
60	Parker, Clint	DE	6-0	193	20	Junior	1VL	Daytona Beach
84	Parris, Gary	TE	6-2	210	21	Junior	1VL	Vero Beach
52	Rainey, Reese	LB	6-1	192	21	Junior	Sq.	Greenville, Ala.
42	Ratliff, Ron	DB	5-11	182	21	Junior	1VL	West Palm Beach
76	Rimby, Bill	OT	6-3	235	22	Senior	2VL	St. Petersburg
37	Roberts, Oscar	RB	5-11	184	21	Soph.	Sq.	Ocilla, Ga.
58	Schmidt, Andy	LB	5-11	192	19	Soph.	Fr.	Brandon
85	Shaw, Bill	DE	6-1	218	21	Senior	1VL	Marietta, Ga.
35	Shively, Randy	DE	6-0	170	20	Soph.	RS	St. Petersburg
22	Smith, Barry	WR	6-1	186	20	Junior	1VL	Miami
20	Snell, David	DB	5-7	172	20	Junior	1VL	Slocomb, Ala.
74	Sparkman, Don	OT	6-5	249	19	Soph.	Fr.	Jacksonville
53	Stokes, Jay	OT	6-3	220	22	Senior	2VL	Sanford
59	Strickland, Larry	LB	6-1	205	21	Junior	1VL	Tallahassee
66	Strickler, Joe	OT	6-2	235	22	Senior	2VL	Avon Park
26	Thomas, James	DB	6-1	196	20	Junior	1VL	Macon, Ga.
12	Whigham, Frank	QB	6-0	189	22	Senior	1VL	Sanford
50	Whitehurst, Dan	LB	6-3	214	21	Junior	1VL	Adel, Ga.

FLORIDA STATE  
VS.  
MISSISSIPPI STATE

Oct. 9, 1971  
2:00 p.m.

Doak S. Campbell Stadium  
Tallahassee, Florida

HOMECOMING

THE OFFICIALS

Referee: Pat McHugh  
Chattanooga, Tenn.

Umpire: Pete T. Williams  
Huntsville, Ala.

Linesman: D. L. Claborn  
Atlanta, Ga.

Field Judge:  
A.C. (Butch) Lambert  
Tupelo, Miss.

Back Judge: Richard A. Allen  
Dunwoody, Ga.

ECO: John N. Buoni  
Memphis, Tenn.

Mississippi State Results

7	At Oklahoma State	26
13	Florida	10
19	Vanderbilt	49
7	At Georgia	35

Florida State Results

24	S. Mississippi	9
20	at Miami	17
30	Kansas	7
17	Virginia Tech	3

Next Week

The Seminoles will seek their fourth straight "road" win when they meet Florida in Gainesville.

Mississippi State will be playing Lamar Tech at State College.

# MISSISSIPPI STATE

No.	Name	Pos.	Hgt.	Wt.	Age	Class	Hometown
5	Anthony Walker	S	5-9	169	21	Senior	Mineral Wells, Texas
6	Lanny Sheffield	DHB	6-2	179	20	Soph.	Fulton
7	Ronnie Everett	QB	6-0	180	19	Soph.	High Springs, Fla.
10	Billy Baker	QB	6-1	175	21	Junior	Pearl
12	Steve Natale	OE	5-10	167	21	Junior	Madison, N.J.
14	Jay Hughes	WB	5-10	171	22	Senior	Clarksdale
16	Hal Chealander	QB	6-4	203	21	Junior	Cypress, Calif.
17	David Straus	QB	5-10	193	20	Soph.	Meridian
21	Buster Boatner	DHB	6-1	175	20	Soph.	Meridian
23	Tom McElroy	TB	5-10	178	21	Senior	Baldwyn
24	Bill Buckley	WB	6-0	169	19	Soph.	Starkville
28	Jimmy Patridge	S	5-10	185	22	Senior	Sidon
30	Johnny Bruce	LB	6-0	196	19	Soph.	Saltillo
31	Emile Petro	S	6-0	172	20	Junior	Leland
32	Wayne Jones	TB	5-10	202	19	Soph.	Kosciusko
33	Steve Stoots	FB	5-10	209	20	Junior	Brownsville, Tenn.
36	Ken Phares	DHB	6-1	190	20	Junior	Clinton, La.
37	Glenn Peterson	FB	6-1	205	22	Senior	Roswell, Ga.
38	Dick McElroy	FB	5-11	185	20	Junior	Baldwyn
40	Frank Dowsing	DHB	5-10	187	20	Junior	Tupelo
41	Lewis Grubbs	TB	5-10	183	20	Junior	Prentiss
42	Ronnie Jones	TB	6-0	185	20	Junior	Forest
43	Billy Southward	LB	6-1	205	20	Junior	Tishomingo
44	Steve Whaley	FB	5-11	202	22	Senior	Pompano Beach, Fla.
45	Don Magee	LB	5-10	194	20	Junior	Tylertown
46	Frank Powers	LB	6-0	195	19	Soph.	Greenwood
48	Joel Holliman	LB	5-11	197	21	Senior	Millport, Ala.
50	John David Calhoun	LB	6-1	190	19	Soph.	Forest
51	Gene Wardlaw	C	6-2	230	20	Soph.	Whitehaven, Tenn.
52	Joe Brabham	C	6-1	231	20	Junior	McComb
53	Chuck Dees	LB	6-0	225	21	Senior	New Orleans, La.
55	Jim Nelson	LB	5-11	200	21	Senior	Jackson
56	Jim Wray	C	6-3	228	19	Soph.	Tiptonville, Tenn.
57	Watson Pillow	DE	6-0	198	21	Senior	Greenwood
58	Glenn Ellis	OT	6-0	225	20	Junior	Biloxi
60	Larry Greenlee	OG	5-11	225	19	Soph.	Kilmichael
61	Ray Archer	OG	6-0	211	20	Junior	Jackson
62	Danny West	OG	6-0	221	19	Soph.	Jackson
63	Andy Brislin	OG	5-11	203	20	Soph.	Columbus
65	Butch Yarbrough	OG	6-1	220	22	Senior	Banbridge, Ga.
66	Rube Rhea	OG	6-0	204	21	Senior	Somerville, Tenn.
67	Bill Enis	OG	6-0	212	20	Junior	Baldwyn
68	Chick King	LB	6-1	206	21	Senior	Yazoo City
69	Kenny Rogers	OT	6-1	224	19	Soph.	Bay Springs
70	Jimmy Rogers Webb	DT	6-4	225	19	Soph.	Florence
71	Joe Edwards	OT	6-4	251	21	Senior	Louisville
72	Jerry Conrad	DT	6-1	225	22	Senior	Parsons, Tenn.
73	Chuck Jordan	DT	5-11	220	21	Senior	Decatur
74	Larry McKnight	OT	6-4	228	20	Soph.	Bessemer, Ala.
75	Robert Bell	DT	5-10	240	20	Junior	Meridian
76	Jerry Johnston	OT	6-6	217	20	Soph.	Bay St. Louis
77	Preston Payne	Ot	6-2	225	22	Senior	Donna, Tex.
78	Greg Fountain	DT	6-3	220	20	Soph.	Ocean Springs
79	Roger Cook	OT	6-1	233	19	Soph.	Canton
80	Dennis Rushing	OE	6-1	183	21	Senior	Dallas, Texas
81	Jim McAlpin	DE	6-2	228	22	Senior	Magee
83	Bob Anger	OE	5-11	175	21	Junior	Jackson
84	Jack Hall	DE	6-2	200	20	Junior	Clinton, La.
85	Bob Bozeman	OE	6-6	190	19	Soph.	Hazlehurst
86	Mike Eaton	DT	6-2	220	21	Senior	Ripley
87	Tommy Strahan	OE	5-11	170	20	Soph.	Morton
89	Eric Hoggatt	OE	6-2	195	21	Senior	Wisner, La.
90	Bob Kimbrough	DE	6-1	200	21	Junior	Lexington
93	Robby Armstrong	DE	6-1	215	20	Junior	Meridian



251

Home Team FLORIDA STATE First Downs: (Rush) 10 (Pass) 6 (Pen.) 0 Total 16 Penalties Against: (No.) 3 (Yards) 25 Own Fumbles: (No.) 6 (Lost) 3

**IMPORTANT:** Most player categories are now ranked on per-game average. Thus, it's vital that you consider every player (on both teams) with any statistics in any game this season (get season player statistics from both SIDs). Then list below the code number and last name of players who have season figures but did NOT play in this game. A game played is one play--whether or not the player touches the ball. All players will be charged with a game unless you tell NCSS otherwise. If a player with first-time statistics has missed games, fill in below--after getting from his SID how many games missed.

## DID NOT PLAY IN THIS GAME

[illegible]

PLAYERS WITH FIRST-TIME STATISTICS WHO HAVE MISSED GAMES: Code No. \_\_\_\_\_ Last Name DEMING No. Games Missed 4 Code No. \_\_\_\_\_ Last Name \_\_\_\_\_ No. Games Missed \_\_\_\_\_

Player Code	PLAYER	RUSHING					PASSING					TOTAL OFFENSE		RECEIVING			INT. RETURNS			PUNTING			PUNT RETURNS			K. O. RETURNS			X Pr. Kicks		Other X Pts.		Field Goals													
		Rushes	Gain	Loss	Net	TD's	Att.	Comp.	Int.	Yards	TD's	Conv.	Plays	Yards	Catches	Yards	TD's	No.	Yards	TD's	No.	Yards	Blk'd.	No.	Yards	TD's	No.	Yards	TD's	TD's	Att.	Made	Att.	Made	Att.	Made	Points									
12	CARRELL	A					B					C		D		E				F	5	69	0	G			H		S																	
18	DAWSON	A					B					C		D	1	9	0	E		F				G			H		S																	
27	FONTES	A					B					C		D				E		F				G			H		S	3	3			2	2	9										
31	GLASS	A					B					C		D	1	9	1	E		F				G			H		S	1						6										
35	HARDIN	A	1	0	1	(-1)	0	B				C	1	(-1)	D			E		F				G			H		S																	
38	HUFF	A	7	4	32	(-28)	0	B	21	11	3	153	2	0	C	28	125	D		E				F			G		H		S															
41	JARRETT	A	10	44	2	42		B	<del>21</del>	<del>11</del>	<del>3</del>	<del>153</del>	<del>2</del>	<del>0</del>	C	10	42	D	4	42	0	E			F		G		H		S															
54	MAGALSKI	A	11	79	3	76	0	B				C	11	76	D			E		F				G			H		S																	
57	MUNROE	A	8	13	7	6	0	B				C	8	6	D			E		F				G			H		S																	
61	NORRIS	A	1	8	0	8	0	B				C	1	8	D			E		F				G			H		S																	
64	OREAIR	A	2	2	3	(-1)	0	B				C	2	(-1)	D			E		F				G			H		S																	
68	PARRIS	A						B				C		D	2	20	0	E		F				G			H		S																	
73	RATLIFF	A						B				C		D			E	1	0	0	F				G		H		S																	
74	ROBERTS	A	3	10	0	10	0	B				C	3	10	D			E		F				G			H		S																	
78	SMITH, B	A	1	21	0	21	0	B				C	1	21	D	3	73	1	E		F				G		H		S	1						6										
80	SNELL	A						B				C		D				E		F				G	4	19	0	H	2	33	0	S														
89	WHIGHAM	A	1	1	0	1	0	B	1	0	1	0	0	0	C	2	0	D		E				F			G		H		S															
19	DEMING	A	1	3	0	3	0	B				C	1	3	D			E		F				G			H		S																	
	GIBBS	A					1	B				C		D			E		F				G			H		S	1							6										
		A						B				C		D			E		F				G			H		S																		
	TEAM TOTALS		46	185	48	137	1	B	22	11	4	153	2	0	C	68	290	D	11	153	2	E	1	0	0	F	5	159	0	G	4	19	0	H	2	33	0	S	3	3	3	0	0	2	2	27

**Visiting Team** ..... **First Downs:** (Rush) ..... (Pass) ..... (Pen.) ..... **Total** ..... **Penalties Against:** (No.) ..... (Yards) ..... **Own Fumbles:** (No.) ..... (Lost) .....

VISITING TEAM TOTALS	42	90	85	5	1	B	28	14	1	149	0	0	C	70	154	D	14	149	0	E	4	330	F	9	328	0	G	1	(-3)	0	H	5	71	0	S	1	0	0	1	0	1	1	9
----------------------	----	----	----	---	---	---	----	----	---	-----	---	---	---	----	-----	---	----	-----	---	---	---	-----	---	---	-----	---	---	---	------	---	---	---	----	---	---	---	---	---	---	---	---	---	---

Date \_\_\_\_\_

Game Site

### Official Attendance

OVER)

SCORE BY QUARTERS	1st	2nd	3rd	4th	Total
FSU	3	10	14	0	27
MISS STATE	0	3	0	6	9

Time of Game: Kickoff 2:01 P.M. End of Game 4:16 P.M. Total Elapsed Time 2:17 (Including intermission)

Weather Conditions RAIN. 72° - WIND EAST 10 MPH

### SCORING SUMMARY

List all scoring plays in sequence. "Time left" means time remaining in the quarter. Under "play," to save you time, please use only: Rush, Pass, INT, PR, KOR, FUM, FG or SAF (instead of writing out interception, punt, kickoff and fumble returns, field goal or safety).

On pass play, list passer first, then receiver and combined yardage of pass and

run. All plays are measured from the line of scrimmage except field-goal attempts--from the point of kick to the goal posts (goal line plus 10 yards).

After each touchdown, please continue on the same line and under "FOR EXTRA POINTS ONLY" check (✓) type of PAT (kick, pass or run) and whether good (G) or no good (NG).

Team	Qtr	Time Left	Play	Player(s)	Yards	FOR EXTRA POINTS ONLY				
						Player(s)	K	P	R	NG
FSU	1	6:29	FG	FONTES	43	PAT				
MISS STATE	2	11:19	FG	ELLI'S	40	PAT				
FSU	2	9:21	PASS	HUFF-SMITH	37	PAT	✓			✓
FSU	3	9:48	FG	FONTES	40	PAT				
FSU	3	4:19	RUSH	MURRAY GIBBS	0	PAT	✓			✓
FSU	3	0:00	PASS	HUFF-GLASS	9	PAT	✓			✓
MISS STATE	4	1:26	RUSH	W. JONES	10	PAT		✓		✓
						PAT				
						PAT				
						PAT				
						PAT				
						PAT				
						PAT				
						PAT				

NON-SCORING LONG PLAYS (70 yards or more, including punts)			
Team	Play	Player(s)	Yards

208

Visiting Team MISS. STATE First Downs: (Rush) 4 (Pass) 10 (Pen.) 0 Total 14 Penalties Against: (No.) 1 (Yards) 5 Own Fumbles: (No.) 8 (Lost) 3

**IMPORTANT:** Most player categories are now ranked on per-game average. Thus, it's vital that you consider every player (on both teams) with any statistics in any game this season (get season player statistics from both SIDs). Then list below the code number and last name of players who have season figures but did NOT play in this game. A game played is one play--whether or not the player touches the ball. All players will be charged with a game unless you tell NCSS otherwise. If a player with first-time statistics has missed games, fill in below--after getting from his SID how many games missed.

**DID NOT PLAY IN THIS GAME**

[illegible]

54 McELROY

XXXXXXXXXX

**PLAYERS WITH FIRST-TIME STATISTICS WHO HAVE MISSED GAMES:** Code No. \_\_\_\_\_ Last Name EVERETT No. Games Missed \_\_\_\_\_ Code No. \_\_\_\_\_ Last Name \_\_\_\_\_ No. Games Missed \_\_\_\_\_

Player Code	PLAYER	RUSHING					PASSING					TOTAL OFFENSE		RECEIVING			INT. RETURNS			PUNTING			PUNT RETURNS			K. O. RETURNS			X Pr. Kicks		Other X Pts.		Field Goals														
		Rushes	Gain	Loss	Net	TD's	Att.	Comp.	Int.	Yards	TD's	Conv.	Plays	Yards	Catches	Yards	TD's	No.	Yards	TD's	No.	Yards	Blk'd.	No.	Yards	TD's	No.	Yards	TD's	TD's	Att.	Made	Att.	Made	Att.	Made	Points										
08	BUCKLEY	A	2	1	3	(-2)	-	B				C	2	(-2)	D	4	39	-	E			F		G		H		S																			
13	CHEALANDER	A	10	10	55	(45)	-	B	22	11	1	120	-	-	C	32	75		D			E		F		G		H		S																	
21	DOWSING	A						B				C			D				E			F		G	1	(-3)	-	H		S																	
	ELLIS, G	A						B				C			D				E			F		G		H		S									1	1	3								
	EVERETT, R	A	6	14	10	4	-	B	6	3	0	29	-	-	C	12	33		D			E		F		G		H		S																	
30	GRUBBS	A	11	29	8	21	-	B				C	11	21	D				E			F		G		H	4	54	-	S																	
34	HOGGATT	A						B				C			D	4	30	-	E			F		G		H		S																			
36	HUGHES	A						B				C			D	3	27	-	E			F		G		H		S																			
41	JONES, W	A	5	17	9	8	1	B				C	5	8	D				E			F		G		H		S	1									6									
68	PETRO	A						B				C			D				E	1	(-2)	-	F		G		H		S																		
	<del>SMITH, E</del>	A						B				C			D				E			F		G		H		S																			
77	SOUTHWARD	A						B				C			D				E	1	13	-	F		G		H		S																		
78	STOOTS	A	6	15	0	15	-	B				C	6	15	D				E			F		G		H	1	17	-	S																	
79	STRAHAN	A						B				C			D	2	39	-	E			F		G		H		S																			
91	WHALEY	A	2	4	0	4	-	B				C	2	4	D				E			F		G		H		S																			
61	NATALE	A						B				C			D	1	14	-	E			F		G		H		S																			
62	NELSON	A						B				C			D				E	1	20	-	F		G		H		S																		
76	SHEFFIELD	A						B				C			D				E			F	9	328	-	G		H		S																	
70	DEES	A						B				C			D				E	1	2	-	F		G		H		S																		
		A						B				C			D				E			F		G		H		S																			
	TEAM TOTALS	A	42	90	85	5	1	B	28	14	1	149	-	-	C	70	154		D	14	149	-	E	4	33	-	F	9	328	-	G	1	(3)	-	H	5	71	-	S	1	-	-	1	-	1	1	9

Home team FLORIDA STATE UNIV. First Downs: (Rush) 10 (Pass) 6 (Pen.) 0 Total 16 Penalties Against: (No.) 3 (Yards) 25 Own Fumbles: (No.) 6 (Lost) 3

HOME TEAM TOTALS	A	46	185	48	137	1	B	22	11	4	153	2	-	C	68	290	D	11	153	2	E	1	-	-	F	5	151	-	G	4	19	-	H	2	33	-	S	3	3	3	0	0	2	2	27
------------------	---	----	-----	----	-----	---	---	----	----	---	-----	---	---	---	----	-----	---	----	-----	---	---	---	---	---	---	---	-----	---	---	---	----	---	---	---	----	---	---	---	---	---	---	---	---	---	----

Date \_\_\_\_\_

### Game Site

### Official Attendance



FLORIDA STATE VS. MISSISSIPPI STATE

Doak Campbell Stadium, Tallahassee (Homecoming)

October 9, 1971--2:00 p.m.

FSU Capts: Munroe 27, Amman 75. MSU Capts: Jordan 73, Dees 53, Whaley 44, ~~Rea~~ Rea 66  
 WEATHER: Cloudy, occasional rain. Temp: 72 Wind: E 10mph. FSU wins toss and kicks off.

Fontes kicks to Grubbs on 2. Return to 20.

- M20 1-10 Grubbs carries for eight yards.  
 M28 2-2 Grubbs at middle for two and first down.  
 M30 1-10 Buckley on pitchout loses three. Thomas stops.  
 M27 2-13 Stoots into middle falls down for three yard gain.  
 M30 3-10 Chealander pass intended for Hoggatt incomplete. overthrown.  
 M30 4-10 Sheffield punts to McMillan ~~for~~ fair catch on FSU 42. 38 yard punt.  
 FSU Ball  
 M42 1-10 Huff pass intended for Munroe intercepted by Petro on MS 31.  
 MSU Ball  
 M31 1-10 Stoots fumbles, recovered by Strickland on M34.  
 FSU Ball  
 M41 1-10 Munroe gets two yards.  
 M32 2-8 Munroe loses core, fumbles, recovered by Armstrong for MS at MS 38.  
 MSU Ball  
 M38 1-10 Grubbs up middle for five yards.  
 M43 2-5 Stoots picks up two.  
 M45 3-3 Chealander fumbles snap, ~~recovers~~ recovers own for three yard loss.  
 M42 4-5 Sheffield punts to McMillan fair catch on FSU 29  
 FSU Ball  
 M29 1-10 Jarrett on sweep picks up three yards.  
 M32 2-7 Munroe sweeps for three.  
 M33 3-4 Huff pass complete to Harris for 10 yards and 1st down.  
 M40 1-10 Huff pass complete to Jarrett for 25 yards and 1st down.  
 M41 1-10 Jarrett sweeps. Huff for no gain.  
 M24 2-10 Huff pass complete to Jarrett for six yards.  
 M38 3-4 Huff to pass slips down for eight yard loss.  
 M26 4-12 Fontes 43 yards field goal attempt is good.

FSU 3, MS 0 6:29 71 yards/8 plays

Fontes kicks to Grubbs on eight, returns to 22.

- M22 1-10 W. Jones fumbles pitchout for five yard loss.  
 M17 2-15 Buckley on pitch picks up one. Thomas stops.  
 M18 3-14 Everett pass intended for W. Jones incomplete. FSU loses five, offsides.  
 M23 3-9 Everett pass intended for Anger incomplete. McMillan and Lanahan  
 M23 4-9 ~~Sheffield~~ Baker punts dead on FSU 47. 30 yard punt.  
 FSU Ball  
 M47 1-10 Huff pass intended for Smith incomplete. Holliman defends.  
 M47 2-10 Magalski on draw slips for one yard loss.  
 M46 3-11 Huff pass intended for Dawson intercepted by Southward, returns 13 yards to M48.  
 MS Ball  
 M48 1-10 Stoots tries middle for two yards.  
 M46 2-8 Grubbs on left side for three yards.  
 M43 3-5 Grubbs goes wide right for three yard gain.  
 M40 4-2 Sheffield punts 39 yards. downed on FSU one yard line.  
 FSU Ball  
 M1 1-10 Huff ~~sneaks~~ sneaks for two  
 M3- 2-8 Jarrett plunges for two more.  
 M5 3-6 Jarrett on right side for three yards.  
 M6 4-3 Carroll punts to Dowsing fair catch at FSU 46. 38 yard punt.  
 MS Ball  
 M46 1-10 Whaley picks up four yards.  
 M42 2-6 Everett on Keeper loses one. Bratton stops.  
 M43 3-7 Quarter ends

FSU 3, MS 0

## First Quarter Statistics

	<u>MISS. STATE</u> Visitors	<u>F. S. U.</u> Home Team
First Downs .....	<u>1</u>	<u>2</u>
Net Yards Rushing .....	<u>23</u>	<u>3</u>
Net Yards Passing .....	<u>0</u>	<u>47</u>
Total Offense .....	<u>23</u>	<u>50</u>
Passes (Completed-Attempted-Intercepted) .....	<u>0 - 2 - 0</u>	<u>3 - 6 - 2</u>
Punts, Average .....	<u>4 for 32</u>	<u>1 for 38</u>
Fumbles Lost .....	<u>1</u>	<u>1</u>
Yards Penalized .....	<u>0 for 0</u>	<u>1 for 5</u>

F43 3-7 Everett pass intended for Natale incomplete.  
 F43 4-7 Sheffield punts to Snell on 8, returned to FSU 22.  
 FSU Ball  
 F22 1-10 Munroe picks up two yards.  
 F24 2-8 Jarrett on draw slips for two yard loss.  
 F22 3-10 Huff pass intercepted by ~~hughes~~ Rhea, returns 20 yards to FSU 10.  
 MS Ball  
 F10 1-10 Grubbs in middle for one.  
 F9 2-9 W. Jones fumbles pitch, recovers for four yard loss.  
 F13 3-12 Chealander to pass thrown for ten yard loss by Whitehurst.  
 F23 4-0 Ellis 40 yard field goal attempt is good.

FSU 3, MS 3 11:19 10 yards/4 plays.

Ellis kicks to Snell on three, returns to F26.

F26 1-10 Magalski loses two on sweep. Bruce stops.  
 F24 2-12 Huff pass complete to Smith for 25 yards and 1st down. Phares tackles.  
 F49 1-10 Norris on draw fumbles, picks it up and gains eight yards.  
 M43 2-2 Magalski up middle gets six yards and 1st down.  
 M37 1-10 Huff pass complete to Smith for 37 yards and TOUCHDOWN.  
 Fontes kick is good.

FSU 10, MS 3 9:27 74 yards/5 plays.

Fontes kicks to Stoots on 14, returns to 31.

M31 1-10 Grubbs slips down on pitchout for three yard loss.  
 F28 2-13 Grubbs on right side for five yards.  
 F33 3-8 Chealander pass intended for Hughes intercepted by Ratliff on F45.  
 FSU Ball  
 F45 1-10 Jarrett has big hole, gains eight yards.  
 M47 2-2 Munroe can't get outside, loses one.  
 M48 3-3 Huff pass intended for Farris incomplete.  
 M46 4-3 Carrell punts out of bounds on M28. 20 yard punt.  
 MS Ball  
 M28 1-10 W. Jones picks up two.  
 M30 2-8 Everett keeps for ~~five~~ four yards.  
 M34 3-3 Grubbs on pitchout ~~loses~~ loses three. Ashmore.  
 M31 4-6 Sheffield punts to Snell on 29, returns to 31.  
 FSU Ball  
 F31 1-10 Jarrett on left side for four yards.  
 F35 2-6 Huff pass intended for Jarrett incomplete. overthrow.  
 F35 3-6 Huff pass intended for Dawson incomplete.  
 F35 4-6 Carrell punts to Dawsing fair catch on MS 32. FSU loses five, illegal motion.  
 F30 4-11 Carrell punts to Dawsing on 23, fumbles, recovered by Arnold for FSU on 22.  
 FSU Ball  
 M22 1-10 Magalski gets four yards.  
 M18 2-6 Magalski gets three more.  
 M15 3-3 Huff to pass loses eight. McAlpin.  
 M23 4-11 Fontes 40 yard field goal attempt is good.

FSU 13, MS 3 1:48 22 yards/4 plays.

Fontes kicks off to Grubbs on three. returns to 15. McMillan tackles.

M15 1-10 Whaley up middle for four  
 M19 2-6 Chealander pass intended for Hughes incomplete, out of bounds.  
 M19 3-6 Chealander pass complete to Hughes for ten yards and 1st down.  
 M29 1-10 Chealander pass intended for Strahan incomplete. McMillan  
 M29 2-10 Chealander pass complete to Strahan for 19 yards and 1st down.  
 M48 1-10 Chealander pass complete to Hoggatt for ten yards and 1st down.  
 F42 1-10 Chealander pass intended for Strahan incomplete. intercepted by McMillan out of bound  
 F42 2-10 Chealander to pass loses 12. Whitehurst and Anderson  
 M46 3-22 Chealander pass complete to Strahan for 20 yards as half ends.

FSU 13, MS 3



# FLASH FOOTBALL STATS

Quick Halftime and After Game Reports of Vital Team Statistics and Individual Leaders  
(Approved Wire Services Form)

**HALFTIME**

Circle One

**FINAL**

## TEAM STATISTICS

	MISS. STATE VISITORS	FSU HOME TEAM
Score . . . . .	3	13
First Downs . . . . .	5	5
Rushes-yards . . . . .	25/3	21/22
Rushing Yardage (Net) . . . . .	59	109
*Return Yardage (Net) . . . . .	28	16
Passes (Comp'd - Att'd - Had Int'd) . . . . .	4-11-1	5-12-3
Punts (Number - Average) . . . . .	6-33.5	3-34.3
Fumbles Lost . . . . .	2	1
Yards Penalized . . . . .	0	10

\*Return of Punts, intercepted Passes and Fumbles (not kickoffs).

## INDIVIDUAL LEADERS

### MISS. STATE VISITORS

RUSHING	Att'd	Net Yards	For TD	Long Gain
GRUBBS	9	21	-	8
STODTS	4	9	-	3
WHALEY	2	4	-	4
PASSING	Att-Compd-Int.	Yds.	For TD	
CHEALANDER	9-4-1	59	-	
EVERETT	2-0-0	0	-	
PASS RECEIVING	No.	Yards	For TD	
HUGHES	1	10	-	
STRAHAN	2	39	-	
HOGGATT	1	10	-	
PUNTING	No.	Avg.	Long Gain	
SHEFFIELD	6	33.5	40	

### FLA. STATE HOME TEAM

RUSHING	Att'd	Net Yards	For TD	Long Gain
JARRETT	7	18	-	8
MUNROE	5	0	-	3
MAGALSKI	5	10	-	6
NORRIS	1	5	-	5
PASSING	Att-Compd-Int.	Yds.	For TD	
HUFF	12-5-3	109	1	
PASS RECEIVING	No.	Yards	For TD	
JARRETT	2	31	-	
PARRIS	1	16	-	
SMITH	2	87	1	
PUNTING	No.	Avg.	Long Gain	
CARRELL	3	34.3	45	

# THIRD QUARTER

FSU receives. Ellis kicks off to Snell on five, returns to 24 15.

- F15 1-10 Jarrett off right tackle for six yards.
- F21 2-4 Huff pass complete to Parris for three yards.
- F24 3-1 Huff sneaks for one yard and a 1st down.
- F25 1-10 Magalski sweeps left, breaks four tackles and gains 27 yards and 1st down.
- M47 1-10 Huff on busted play loses three.
- 50 2-13 Huff to pass loses 13, fumbles, but Strickland recovers for FSU. Hall tackles Huff.
- F37 3-26 Huff pass intended for Gaydos incomplete
- F37 4-26 Carrell punts dead on MS 41. 22 yard punt.

MS Ball

- M41 1-10 Chealander pass complete to Hughes for 11 yards and 1st down.
- F48 1-10 Stotts picks up three.
- F45 2-7 Stotts up middle for three.
- F43 3-4 Chealander pass intended for Hughes incomplete.
- F43 4-4 Sheffield punts into end zone. 43 yard punt.

FSU Ball

- F20 1-10 Magalski rips up middle for 17 yards and 1st down.
- F37 1-10 Magalski on right side for three yards.
- F40 2-7 Huff pass complete to Smith on sideline for 11 yards and 1st down.
- M49 1-10 Jarrett picks up three.
- M46 2-7 Magalski on draw gets four.
- M42 3-3 Huff pass complete to Jarrett for two yards.
- M40 4-1 Munroe blasts for four yards and 1st down.
- M36 1-10 Huff pass intended for Smith incomplete.
- M36 2-10 Huff pass intended for Smith incomplete deep.
- M36 3-10 Huff pass complete to Jarrett for nine yards, he fumbles, MS recovers.

MS Ball

- M27 1-10 Chealander fumbles, Hunt recovers for FSU on 26.

FSU B 11

- M26 1-10 Jarrett rambles for 15 yards and 1st down.
  - M11 1-10 Huff pass complete to Dawson for nine yards.
  - M2 2-1 Munroe into middle for one yard and 1st down on second effort.
  - M1 1-4 Munroe dives one yard for TOUCHDOWN.
- Fontes kick is good.

FSU 20, MS 3 4:19 26 yards/ 4 plays.

Fontes kicks to Grubbs in end zone.

- M20 1-10 Grubbs picks up two.
  - M22 2-8 Grubbs gets three, but MS loses five, illegal motion
  - M18 3-12 Chealander to pass ~~loses~~ loses ten. Gridley is there.
  - M7 3-22 Chealander pass intended for Strahan incomplete.
  - M7 4-22 Sheffield punts to Snell on 50, returns to 46. 38 yard punt.
- FSU Ball
- M46 1-10 Smith on reverse gets 21 yards and 1st down.
  - M25 1-10 Magalski on delay goes ten yards and 1st down.
  - M15 1-10 Magalski hits outside for five yards on second effort.
  - M10 2-5 Huff keeps on option for one yard.
  - M9 3-4 Huff pass complete to Glass for nine yards and TOUCHDOWN.
- Fontes kick is good.

~~FSU 26~~

FSU 27, MS 3 0:00 46 yards / 5 plays.

## FOURTH QUARTER

Pontes kicks to Grubbs on two, returns to 16.

- M16 1-10 Chealander pass intended for Hoggatt incomplete.  
 M16 2-10 Chealander pass intended for Whaley incomplete, dropped.  
 M16 3-10 Chealander to pass, scrambles out, loses seven. Cooper tackles.  
 M8 4-17 Sheffield punts to Snell on F41, returns ~~in~~ nine yards, FSU loses 15, clipping.

FSU Ball

- F39 1-10 Roberts picks up seven yards.  
 F46 2-3 Roberts up middle gets three more and 1st down.  
 F49 1-10 Roberts no gain.  
 F49 2-10 Whigham ~~max~~ keeps for one yard.  
 50 3-9 Whigham pass intended for Roberts intercepted by Dees on M40.

MS Ball

- M40 1-10 Chealander to ~~max~~ pass loses seven. Jacobi tackles.  
 M33 2-17 Chealander pass complete to Buckley for eight yards.  
 M42 3-9 ~~max~~ Chealander keeps for nine yards and 1st down.  
 F49 1-10 Chealander pass complete to Buckley for ten yards and 1st down.  
 F39 1-10 Chealander fumbles snap and recovers for one yard loss.  
 F40 2-11 Chealander pass complete to Natale for 14 yards and 1st down.  
 F26 1-10 Chealander pass complete to Hoggatt for nine yards.  
 F17 2-1 Grubbs on pitchout loses two. Lewis.  
 F19 3-3 Chealander pass complete to Hughes for ~~six yards~~ six yards and 1st down.  
 F13 1-10 Chealander pass complete to Hoggatt for three yards.  
 F10 2-7 Chealander rolls out, loses three. Anderson tackles.  
 F13 3-10 Chealander pass intended for Duckley at goal incomplete, broken up by Lewis.  
 F13 4-10 Chealander pass intended for Strahan incomplete, broken up by Parker at goal.

FSU Ball

- F13 1-10 Hardin loses one.  
 F12 2-11 Oresair loses three.  
 F9 3-14 Oresair at middle gets two.  
 F11 4-22 Carrell punts to Dowsing fair catch on F45. 34 yard punt.

MS Ball

- F45 1-10 Everett pass complete to Buckley for ten yards and 1st down.  
 F35 1-10 Everett pass complete to Buckley for 11 yards and 1st down.  
 F24 1-10 Everett keeps for one yard. Snell.  
 F23 2-9 Everett pass complete to Hoggatt for ~~nine yards~~ eight yards.  
 F15 3-1 W. Jones picks up five yards and 1st down.  
 F10 1-6 W. Jones goes ten yards for TOUCHDOWN on great second effort.  
 Everett pass intended for Steets incomplete.

FSU 27, MS 9 1:26 45 yards/ 6 plays.

Ellis kicks on sides, recovered by Hall for MS

- 50 1-10 Everett pass intended for Hoggatt incomplete. Lewis and Ratliff.  
 50 2-10 Everett fumbles snap, M MS ~~recovered~~ recovers for loss of three.  
 M47 3-13 Everett to pass loses six, Anderson.  
 M41 4-19 Everett keeps for nine yards. ~~Anderson~~

FSU Ball

- M49 1-10 Whigham gains three as game ends.

2 FSU 27, Miss. St. 9



# FLASH FOOTBALL STATS

Quick Halftime and After Game Reports of Vital Team Statistics and Individual Leaders  
(Approved Wire Services Form)

HALFTIME

Circle One

FINAL

## TEAM STATISTICS

	MISS. STATE VISITORS	F.S.U. HOME TEAM
Score . . . . .	9	27
First Downs . . . . .	14	16
Rushing-yards . . . . .	5	137
Rushing-average (Yds) . . . . .	14.7	15.3
Passing Yardage (Net) . . . . .	30	19
*Return Yardage (Net) . . . . .	14-28-1	11-22-4
Passes (Compl'd - Att'd - Had Int'd) . . . . .	9 - 36.5	5 - 31.8
Punts (Number - Average) . . . . .	3	3
Fumbles Lost . . . . .	5	25
Yards Penalized . . . . .		

\*Return of Punts, Intercepted Passes and Fumbles (not kickoffs).

## INDIVIDUAL LEADERS

MISS. STATE VISITORS				
RUSHING	Att'd	Net Yards	For TD	Long Gain
GRUBBS	11	21	-	8
W. JONES	5	8	1	10
STOOTS	6	15	-	3
PASSING	Att-Compl-H.I.	Yds.	For TD	
CHEALANDER	22-11-1	120	0	
EVERETT	6-3-0	29	0	
PASS RECEIVING	No.	Yards	For TD	
HUGHES	3	27	-	
STRAHAN	2	39	-	
HOGGATT	4	30	-	
PUNTING	No.	Avg.	Long Gain	
SHEFFIELD	9	36.5	47	

FLA. STATE HOME TEAM				
RUSHING	Att'd	Net Yards	For TD	Long Gain
JARRETT	10	42	-	15
MAGALSKI	11	76	-	27
MUNROE	8	6	1	4
PASSING	Att-Compl-H.I.	Yds.	For TD	
HUFF	21-11-3	153	1	
	-	-	-	
PASS RECEIVING	No.	Yards	For TD	
PARRIS	2	20	-	
JARRETT	4	42	-	
SMITH	3	73	-	
GLASS	1	9	1	
PUNTING	No.	Avg.	Long Gain	
CARRELL	5	31.8	45	

SCORING

	1	2	3	4	F
MISS. STATE	0	3	0	6	9
FLA. STATE	3	10	14	0	27

FS- ~~FC~~ Fontes 43 FG (6:29 1st Period)

MS- Ellis 40 FG (11:19 2nd Period)

FS- Smith 37 pass from Huff(Fontes kick) (9:27 2nd Period)

FS- Fontes 40 FG (1:48 2nd Period)

FS- ~~Martin~~ ~~44~~ (Fontes kick) (4:19 3rd Period)

FS- Glass 9 pass from Huff(Fontes kick) (0:00 3rd Period)

MS- Jones 10 run(pass failed) (1:26 4th Period)

FS- Gibbs recovered fumble in end zone

FLA. STATE vs. MISS. STATE

Date 10/9/71

Stadium DOAK CAMPBELL

Attendance 27,415

## FINAL TEAM STATISTICS

	MISS. STATE VISITORS	F. S. U. HOME TEAM
Total First Downs	14	16
Rushing Yardage (Net)	5	137
Passing Yardage (Net)	149	153
Total Offense	154	290
Return Yardage	30	19
Passes Completed/Att'd/Held Int/	14 - 28 - 1	11 - 22 - 4
Passes Intercepted By	4	1
Number Punts/ Average	9 - 36.5	5 - 31.8
Fumbles/ Fumbles Lost	8 - 3	6 - 3
Total Yards Penalized	1 - 5	3 - 25
First Downs Rushing	4	10
First Downs Passing	10	6
First Downs Penalty	0	0
Yards Lost Rushing	85	48
Yards Interceptions Returned	33	0
Punts Blocked By	0	0
Number Punt Returns	1	4
Total Yards Punt Returns	(-3)	19
Number Kickoffs Returned	5	2
Total Yards Kickoffs Returned	71	33
Total Rushing Plays	42	46
Total Plays	70	68





## QUOTES BY CHARLEY SHIRA

"We tried to disguise our defense in the first half with shifts, but they would snap the ball on a quick count, thus catching us before we were ready."

"We double-teamed (Rhett) Dawson most of the afternoon, which kept him pretty-well contained."

"Did you ever see so many turn overs in your life? It seemed like every time ~~MM~~ our defense stoped them, we would turn the ball right back over to them."

"We used five different pass coverages in the game, and they hurt us with ~~KMM~~ their draw because of this, especially in the second half."

"The pass interception that was attributed to Rube Rhea was actually made by linebacker Jim Nelson."

"Their fine quarterback, (Gary) Huff, did an excellent job ~~passing~~ passing. That touchdown pass to (Mike) Glass was laid perfectly over Ken Phares~~XXXXXX~~ in the corner."

## QUOTES FROM LARRY JONES

"Three interceptions and one fumble in the first half hurt us. We couldn't get anything done. And at the same time Mississippi State was certainly coming after us."

"We lost two middle guards, Larry Strickland and David Miles, early in the game. Guy Glisson played just about the hold game at middle guard and he hadn't practised at down this fall at that postion."

"I think the defense played well all day. We used ~~53~~ 53 of the 54 players we dressed."

"James Jarrett had another good game. He's the most undarated player on t<sup>is</sup> team. I think ~~we~~ will continue to alternate Paul Magalski and Arthur Munroe at ~~tailback~~ tailback. Magalski ran well today."

"~~The coverage~~ wouldn't let us throw a lot to Dawson today. In fact, it just wasn't a good day for throwing."

"We used our second units a good bit in the second half because they need the expe lence."

"I don't worry ~~exist~~ about rankings and ratings and I don't this team does either. We're just taking games one at a time."