

OFFICIAL NCAA BASKETBALL BOX SCORE

Date: 2/16/1995

FINAL

COMPAQ Computer & Ultimate Systems, Inc.

Cole Field House, College Park, MD

Florida State at Maryland Terrapins

Florida State Seminoles (8-18)/(3-11)		TOTAL FG FGA		3-PT FG FGA		FT FTA		REBOUNDS OFF DEF TOT			PF	TP	A	TO	BK	S	MIN
5 McLin, Latrice	F	2	4	1	1	0	0	0	0	0	0	5	0	1	0	0	10:00
22 Williams, Carla	F	7	10	0	0	5	7	6	3	9	4	19	0	1	0	0	30:00
31 Moorefield, Lyssa	C	3	7	0	0	0	1	1	2	3	4	6	1	2	2	0	33:00
30 Rickman, Tanisha	G	3	7	1	2	1	2	1	4	5	3	8	1	3	0	0	28:00
32 Percy, Allison	G	3	7	0	2	7	10	0	6	6	2	13	7	5	0	2	38:00
44 Pedersen, Anja		1	4	0	1	0	0	0	5	5	2	2	1	1	0	0	23:00
24 Taylor, Liberty		1	3	0	0	3	5	3	3	6	2	5	1	0	1	0	17:00
45 Hampton, Wendy		3	7	1	1	1	3	2	2	4	1	8	2	4	1	0	19:00
20 Penn, Aletha		0	1	0	0	0	0	0	0	0	0	0	0	1	0	0	2:00
TEAM STATS		0	0	0	0			0	0	0							
TOTALS		23	50	3	7	17	28	13	25	38	18	66	13	18	4	2	200:00

TOTAL FG%: 1st Half 11-23 0.478 2nd Half 12-27 0.444 GAME 0.460

3-PT FG%: 1st Half 2- 3 0.667 2nd Half 1- 4 0.250 GAME 0.429

FT FG%: 1st Half 7- 9 0.778 2nd Half 10-19 0.526 GAME 0.607

Deadballs : 2

Time Outs : 1

University of Maryland Terrapins (10-15)/(2-12)		TOTAL FG FGA		3-PT FG FGA		FT FTA		REBOUNDS OFF DEF TOT			PF	TP	A	TO	BK	S	MIN
00 Cross, Stephanie	F	3	12	0	1	2	2	3	3	6	3	8	1	1	1	1	26:00
51 Cimmier, Rachel	F	3	8	0	0	4	4	1	6	7	3	10	0	2	2	0	26:00
54 Ohman, Nina	C	4	10	0	0	3	4	3	6	9	4	11	0	3	0	0	28:00
10 Ferguson, Karon	G	1	2	0	0	0	0	1	1	2	5	2	6	2	0	2	36:00
32 Camper, Kesha	G	6	12	0	0	2	4	4	4	8	4	14	4	2	0	1	39:00
33 Chase, Sonia		4	15	0	0	3	5	5	3	8	4	11	2	3	0	2	29:00
12 Purvis, Lillian		1	2	1	1	0	0	1	0	1	3	3	1	1	0	0	16:00
TEAM STATS		0	0	0	0			0	0	0							
TOTALS		22	61	1	2	14	19	18	23	41	26	59	14	15	3	6	200:00

TOTAL FG%: 1st Half 8-31 0.258 2nd Half 14-30 0.467 GAME 0.361

3-PT FG%: 1st Half 0- 0 0.000 2nd Half 1- 2 0.500 GAME 0.500

FT FG%: 1st Half 5- 6 0.833 2nd Half 9-13 0.692 GAME 0.737

Deadballs : 1

Time Outs : 1

OFFICIALS: Art Bomegin (R) / Cathy Campbell
John Weimer /Score By Periods 1 2 Final
FLORIDA ST 31 35 66
MARYLAND 21 38 59

Technical Fouls : 1st Half: None, 2nd Half: None

Attendance: 440

OFFICIAL NCAA BASKETBALL PLAY BY PLAY

Date: 2/16/1995

2ND HALF MARYLAND vs. FLORIDA ST

COMPAQ Computer & Ultimate Systems, Inc.

Cole Field House, College Park, MD

Florida State at Maryland Terrapins

MARYLAND STARTERS: Cross, Ferguson, Camper, Cimmier, Ohman
FLORIDA ST STARTERS: McLin, Williams, Rickman, Moorefield, PeercyHome Team : MARYLAND
Visiting Team : FLORIDA ST

TIME	SCORE	LEAD	PLAY DESCRIPTION	(Indented team: FLORIDA ST)
19:28			FOUL-DEFENSIVE : Williams (p:1 t:1)	
19:28			FLORIDA ST SUBS: Taylor FOR Williams	
19:24	23	- 8	Ohman layup / Assist - Camper	
19:03	33	-10	Moorefield from in the paint	
18:17			MARYLAND SUBS: Chase FOR Cross	
17:54	25	- 8	FOUL-DEFENSIVE : Taylor (p:1 t:2) / Cimmier shooting 2 : (Made, Made)	
17:35			FOUL-DEFENSIVE : Ferguson (p:1 t:1)	
16:58	26	- 7	FOUL-DEFENSIVE : Moorefield (p:1 t:3) / Ohman shooting 2 : (Miss, Made)	
16:40	35	- 9	Pedersen left jumper (16ft) / Assist - Taylor	
16:03	28	- 7	Cimmier from in the paint / Assist - Ferguson	
15:32	30	- 5	Chase from in the paint	
15:07			OFFICIAL'S TIME OUT.	
14:53	32	- 3	Cimmier layup / Assist - Camper	
14:19			FLORIDA ST SUBS: Williams FOR Taylor	
14:19			FOUL-DEFENSIVE : Pedersen (p:1 t:4)	
14:18	34	- 1	FOUL-DEFENSIVE : Moorefield (p:2 t:5) / Ohman shooting 2 : (Made, Made)	
13:40	36	+ 1	Ohman layup	
13:19			FOUL-DEFENSIVE : Ferguson (p:2 t:2)	
12:57			FLORIDA ST SUBS: Hampton FOR Rickman	
12:57	38	+ 3	FOUL-DEFENSIVE : Pedersen (p:2 t:6) / Camper shooting 2 : (Made, Made)	
12:28			FOUL-DEFENSIVE : Camper (p:1 t:3)	
12:04	37	+ 1	Peercy layup	
11:39	40	+ 3	Ohman layup / Assist - Camper	
10:51	39	+ 1	Williams layup / Assist - Peercy	
10:20	42	+ 3	Chase from in the paint	
10:01			MARYLAND SUBS: Cross FOR Camper	
9:27	41	+ 1	Peercy from in the paint	
9:02			MARYLAND SUBS: Camper FOR Cimmier	
8:59	44	+ 3	Ohman jump-hook from in the paint / Assist - Camper	
8:22			FOUL-DEFENSIVE : Moorefield (p:3 t:7) / Camper shooting 1-1 : (Misses front end)	
7:49	43	+ 1	Hampton from in the paint / Assist - Peercy	
7:26			MARYLAND SUBS: Purvis FOR Chase	
7:26			FLORIDA ST SUBS: Rickman FOR Pedersen	
7:22	45	- 1	Williams from in the paint	
7:22			FOUL-DEFENSIVE : Ohman (p:1 t:4) / Williams shooting 1 : (Miss)	
7:20	46	+ 1	Ferguson from in the paint	
7:02			FOUL-OFFENSIVE : Ohman (p:2 t:5)	
6:52	48	- 2	Rickman 3PT right jumper (20ft) / Assist - Peercy	
6:39	48	TIE	Camper from in the paint / Assist - Ferguson	
6:21	50	- 2	Williams from in the paint / Assist - Hampton	
5:27			MARYLAND SUBS: Chase FOR Purvis	
5:27	52	- 4	FOUL-DEFENSIVE : Cross (p:1 t:6) / Williams shooting 2 : (Made, Made)	
5:16	50	- 2	Cross from in the paint / Assist - Ferguson	
5:01	53	- 3	FOUL-DEFENSIVE : Chase (p:1 t:7) / Rickman shooting 2 : (Made, Miss)	
5:00			TIME OUT - MARYLAND (1)	
4:47	52	- 1	Camper from in the paint / Assist - Cross	
4:47			FLORIDA ST SUBS: Taylor FOR Moorefield	
4:47			FOUL-DEFENSIVE : Moorefield (p:4 t:8) / Camper shooting 1 : (Miss)	
4:19	55	- 3	FOUL-DEFENSIVE : Ferguson (p:3 t:8) / Peercy shooting 2 : (Made, Made)	
4:08			FOUL-DEFENSIVE : Rickman (p:1 t:9) / Chase shooting 1-1 : (Misses front end)	
3:44	56	- 4	FOUL-DEFENSIVE : Cross (p:2 t:9) / Taylor shooting 1-1 : (Made, Miss)	
2:35			MARYLAND SUBS: Cimmier FOR Cross	
1:33	58	- 6	Williams layup / Assist - Peercy	
1:19	54	- 4	FOUL-DEFENSIVE : Williams (p:2 t:10) / Cimmier shooting 1-1 : (Made, Made)	
1:15	60	- 6	FOUL-DEFENSIVE : Ferguson (p:4 t:10) / Peercy shooting 1-1 : (Made, Made)	
0:58			FOUL-DEFENSIVE : Chase (p:2 t:11) / Taylor shooting 1-1 : (Misses front end)	
0:53	62	- 8	Hampton from in the paint	
0:41			MARYLAND SUBS: Purvis FOR Ferguson	
0:41			FOUL-DEFENSIVE : Ferguson (p:5 t:12) / Peercy shooting 1-1 : (Misses front end)	
0:31	57	- 5	Purvis 3PT right jumper (21ft)	
0:29			FOUL-DEFENSIVE : Camper (p:2 t:13) / Peercy shooting 1-1 : (Misses front end)	
0:22	63	- 6	FOUL-INTENTIONAL : Ohman (p:3 t:14) / Hampton shooting 2 : (Miss, Made)	
0:15			FOUL-DEFENSIVE : Camper (p:3 t:15) / Hampton shooting 1-1 : (Misses front end)	

OFFICIAL NCAA BASKETBALL PLAY BY PLAY

- continued -

Date: 2/16/1995

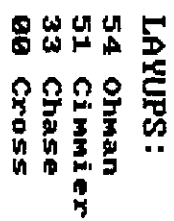
2ND HALF MARYLAND vs. FLORIDA ST

Florida State at Maryland Terrapins

TIME	SCORE	LEAD	PLAY DESCRIPTION	(Indented team: FLORIDA ST)
0:14			TIME OUT - FLORIDA ST (1)	
0:14	65	- 8	Williams from in the paint / Assist - Hampton	
0:14			FOUL-DEFENSIVE : Camper (p:4 t:16)	
0:09	59	- 6	Chase from in the paint	
0:05	66	- 7	FOUL-DEFENSIVE : Purvis (p:1 t:17) / Peercy shooting 1-1 : (Made, Miss)	
0:00	59 66	- 7	END 2nd HALF	

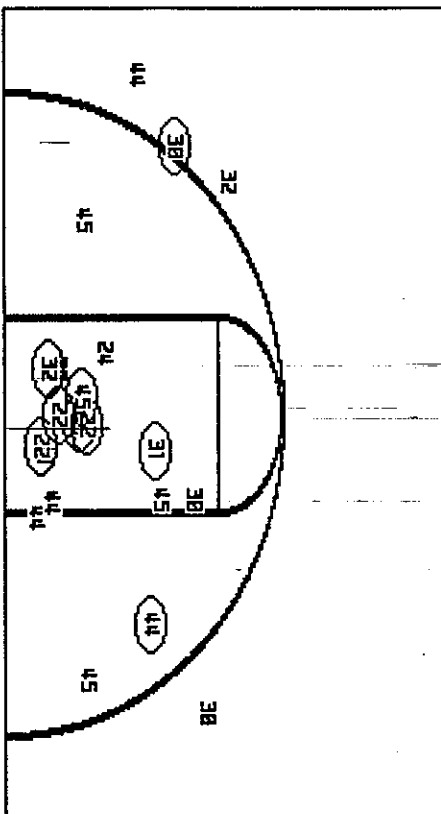
Lead Changes 4

	MARYLAND	FLORIDA ST
Biggest Lead	3 (Half 2 at 12:57)	12 (Half 1 at 1:34)
Second Chance Points	0	0
Starters Scoring	45	51
Bench Scoring	14	15



3	1	0	0	4
/	/	/	/	1
/	/	/	/	1
/	/	/	/	2

FLORIDA ST



LAYUPS:

22 Williams
32 Percy

2	1	4	1
/	/		

OFFICIAL NCAA BASKETBALL BOX SCORE

Date: 2/16/1995

1ST HALF

COMPAQ Computer & Ultimate Systems, Inc.
Cole Field House, College Park, MD
Florida State at Maryland Terrapins

Florida State Seminoles ()/()		TOTAL FG FGA		3-PT FG FGA		FT FTA		REBOUNDS OFF DEF TOT			PF	TP	A	TO	BK	S	MIN
5 McLin, Latrice	F	2	4	1	1	0	0	0	0	0	0	5	0	1	0	0	10:00
22 Williams, Carla	F	2	3	0	0	3	4	2	1	3	2	7	0	1	0	0	15:00
31 Moorefield, Lysa	C	2	5	0	0	0	1	1	0	1	0	4	1	2	2	0	18:00
30 Rickman, Tanisha	G	2	3	0	0	0	0	0	4	4	2	4	1	3	0	0	14:00
32 Percy, Allison	G	1	4	0	1	2	2	0	4	4	2	4	3	2	0	1	18:00
44 Pedersen, Anja		0	0	0	0	0	0	0	5	5	0	0	1	0	0	0	10:00
24 Taylor, Liberty		1	1	0	0	2	2	1	1	2	1	4	0	0	0	0	7:00
45 Hampton, Wendy		1	2	1	1	0	0	0	0	0	1	3	0	1	1	0	6:00
20 Penn, Aletha		0	1	0	0	0	0	0	0	0	0	0	0	1	0	0	2:00
TEAM STATS		0	0	0	0			0	0	0							
TOTALS		11	23	2	3	7	9	4	15	19	8	31	6	11	3	1	100:00

TOTAL FG%: 1st Half 11-23 0.478 2nd Half 0-0 0.000 GAME 0.478
 3-PT FG%: 1st Half 2-3 0.667 2nd Half 0-0 0.000 GAME 0.667 Deadballs : 1
 FT FG%: 1st Half 7-9 0.778 2nd Half 0-0 0.000 GAME 0.778 Time Outs : 0

University of Maryland Terrapins ()/()		TOTAL FG FGA		3-PT FG FGA		FT FTA		REBOUNDS OFF DEF TOT			PF	TP	A	TO	BK	S	MIN
00 Cross, Stephanie	F	2	8	0	0	2	2	1	2	3	1	6	0	1	1	1	17:00
51 Cimmier, Rachel	F	1	3	0	0	0	0	0	3	3	3	2	0	1	1	0	12:00
54 Ohman, Nina	C	0	3	0	0	0	0	1	1	2	1	0	0	2	0	0	8:00
10 Ferguson, Karon	G	0	1	0	0	0	0	1	1	2	0	0	3	2	0	0	17:00
32 Camper, Kesha	G	4	8	0	0	0	0	2	1	3	0	8	0	0	0	0	20:00
33 Chase, Sonia		1	7	0	0	3	4	3	1	4	2	5	2	1	0	2	13:00
12 Purvis, Lillian		0	1	0	0	0	0	1	0	1	2	0	1	1	0	0	13:00
TEAM STATS		0	0	0	0			0	0	0							
TOTALS		8	31	0	0	5	6	9	9	18	9	21	6	8	2	3	100:00

TOTAL FG%: 1st Half 8-31 0.258 2nd Half 0-0 0.000 GAME 0.258
 3-PT FG%: 1st Half 0-0 0.000 2nd Half 0-0 0.000 GAME 0.000 Deadballs : 0
 FT FG%: 1st Half 5-6 0.833 2nd Half 0-0 0.000 GAME 0.833 Time Outs : 0

OFFICIALS: Art Bomegin (R) / Cathy Campbell
John Weimer /Score By Periods Half
FLORIDA ST 31
MARYLAND 21Technical Fouls : 1st Half: None
Attendance:

Maryland vs Florida State
1994-95 Women's Basketball

Date: February 16, 1995

Cole Field House College Park, Maryland

Starters: MD: Camper, F; Cimmier, F; Ohman, C; Ferguson, G; Cross, G; FSU: McLin, F; Williams, F;
 Officials: Art Bonegin (R), Cathy Campbell, John Weimer

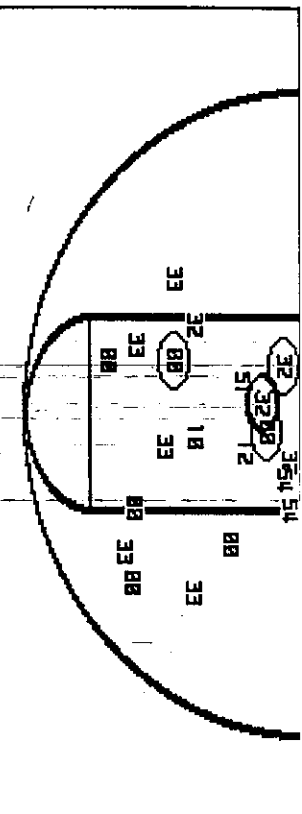
Moorefield, C; Rickman, G;
 Peercy, G

1st Half, Page One

Time	UM	Opp.	Description	Score +/-
12:00			Possession to Florida State	
19:39		2	Moorefield puts it up underneath from Rickman	-2
17:18	2		Cross cuts across lane for short jumper	--
16:55		4	Williams will driving layup and fouled	-2
16:08		5	FOUL: Cimmier pl, t1, Williams for 1, yes	-3
15:57	4	8	McLin with three from the right side	-6
14:39	5,6		Ferguson to Camper for lay in	-4
14:39			FOUL: Williams pl,t1 Chase for 2 - yes, yes	-2
13:45			SUB: Purvis for Cimmier	
13:27	8	10	Official Timeout	
13:06			Peercy lays it in from the left	-4
13:05			Camper lay in from Ferguson feed	-2
12:31		11	FOUL: Purvis pl, t2	
12:28		13	FOUL: Cross pl, t3 Williams for 2-no, yes	-3
11:39			McLin with left side jumper	-5
10:49	10	15	SUB: Cimmier for Cross	
10:29			Moorefield with 10 ft j from Peercy assist	-7
10:20			Chase goes the length and lays it in	-5
9:25			SUB: Pedersen for McLin	
9:03			Official Timeout	
8:24			FOUL: Purvis p2, t5	
7:45			FOUL: Rickman pl, t2	
7:21	12	17	SUB: Cross for Cimmier	
7:04		19	FOUL: Peercy pl, t3	
6:45		20	Rickman with short j from Peercy assist	-7
6:05			Cross with j from the middle	-5
5:58			Williams lays it up and fouled	-7
5:40	14	22	FOUL: Chase p2, t6 Williams for 1-yes	-8
5:19		23,24	SUB: Taylor for Moorefield, Cimmier for Chase	
5:06			Official Timeout	
5:04			Rickman with a driving layup	-10
4:45	15,16		FOUL: Rickman p2, t4 (Offensive)	
4:41			SUB: Hampton for Rickman	
4:34			Cimmier lays it up off Purvis fee	-8
4:03	18	27	FOUL: Cimmier p2, t7 Peercy for 2-yes,yes	-10
3:57			SUB: Ohman for Cimmier	
3:32		29	FOUL: Taylor pl, t5	
3:14			FOUL: Hampton pl, t6	
3:02			FOUL: William p2, t7 Cross for 1X1-yes,yes	-8
2:17	19		SUB: Moorefield for Williams	
1:34		30,31	Hampton with a three from the right side	-11
1:06			Camper lays it up from Ferguson	-9
0:23.2	21		Official Timeout	
			Taylor with turnaround jumper from the right	-11
			JUMP: Maryland	
			SUB: Chase for Ferguson	
			FOUL: Peercy t2, tL Chase for 1X1-yes,no	-10
			SUB: Cimmier for Purvis, Penn for Peercy	
			FOUL: Cimmier p3, tL Taylor for 2-yes,yes	-12
			FOUL: Ohman pl, tL Moorefield for 1X1-no	
			Camper with layup from Chase assist	-10

HALFTIME SCORE: MARYLAND 21 FLORIDA ST. 31

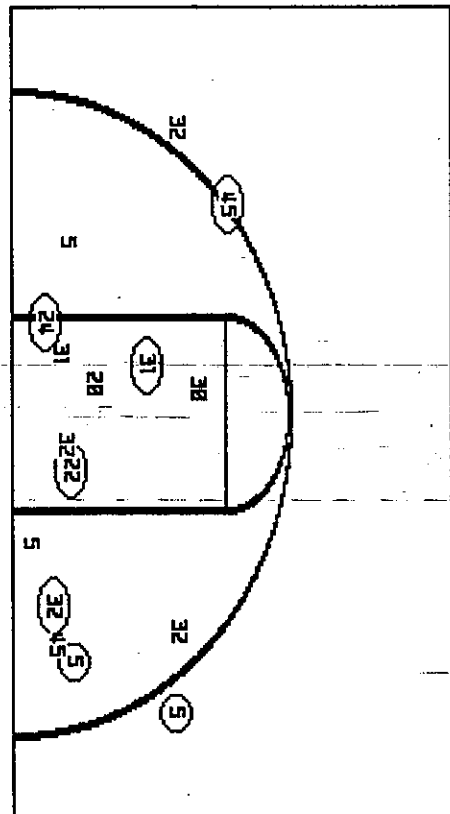
MARRY LAND



LAYUPS:

51 Cimnier	1	/	2
33 Chase	1	/	2
32 Camper	1	/	2
54 Ohman	0	/	1
00 Cross	0	/	2

FLORIDA ST



LAYUPS:

30 Rickman	2	/	2
31 Moorefield	1	/	3
22 Williams	1	/	2

FLORIDA STATE WOMEN'S BASKETBALL POSTGAME STORY

FSU WOMEN'S BASKETBALL: FOR IMMEDIATE RELEASE -- Feb. 16, 1995

PEERCY NETS RECORD WITH FLORIDA STATE VICTORY

COLLEGE PARK, MD -- Florida State senior guard Allison Peercy became FSU's all-time assists leader as the Lady 'Noles downed Maryland, 66-59, Thursday night at Cole Field House. The win, which marks FSU's second straight victory and its first at Maryland, improved the Lady 'Noles record to 8-18 overall and 3-11 in the ACC. Maryland falls to 10-15 overall and 2-12 in the league.

"I was very proud of how the team played tonight," FSU coach Marynell Meadors said. "I thought we played some excellent defense and that was the difference. We hit some big free throws down the stretch and didn't turn the ball over as much in the second half."

With seven assistst tonight, Peercy has 367 assists in her career, breaking the previous record of 364 by Robin Corn (1988-92). But it wasn't the record that seemed to put a smile on Peercy's face tonight, it was the Florida State win.

"I'm just glad we won," Peercy said. "I really didn't know how close I was to the record or even that I got it. The wins are what's important now. The records are something for later."

But the victory wasn't an easy won for the Tribe. The first half belonged to Florida State as the Lady 'Noles shot .478 and led Maryland by 10 points (31-21) at the break. The second half, however, was a different story. Maryland came out on fire in the final 20 minutes and controlled the game for the first 10 minutes as the Terrapins outscored Florida State 21-8 and led 42-39. with 10:21 to go. But the Lady Seminoles weren't going to let this one get away and finally regained a lead with Tanisha Rickman's three pointer at 6:49, making the score, 48-46. Maryland tied the game on its next possession but would not lead again.

During that Maryland run, Meadors took a crucial timeout to talk things over.

"I thought by that time we had started climbing back and played really good defense," Meadors said. "We told our guards that they needed to start putting more pressure on their guards and they did that. Then we hit some crucial free throws down the stretch, putting the game out of Maryland's reach."

Junior Carla Williams led all scorers with 19 points while Peercy also tallied double figures with 13 points. The win marked just the second FSU victory over Maryland in nine tries as well as since the 1992-93 season.

"It's great to win here," Peercy said. "It's just great to win on the road. It was an important game for both teams as far as seeding in the ACC tournament."

The win puts Florida State in a position to still finish as high as sixth in the ACC race. But the Tribe heads to the league top team, Virginia, on Saturday. Despite what's ahead, Meadors is very proud of her team tonight as well as its performance throughout this struggling season.

"What I love most about this team is that they never quit," Meadors said. "No matter if they are up by 10 or down by 10, they play their hearts out til the end."

And as far as Peercy is concerned ...

Peercy hits FSU record

Compiled from special and wire reports

COLLEGE PARK, Md. — Senior guard Allison Peercy became the all-time Florida State women's assists leader in a 66-59 victory over Maryland Thursday night at Cole Field House.

The seven assists gave Peercy 367, surpassing the 364 by Robin Corn (1988-92).

"I really didn't know how close I was to the record or even that I got it," Peercy said after the Seminoles improved to 8-18 and 3-11 in the Atlantic Coast Conference with consecutive victories. "The wins are what's important now. The records are something for later."

"We're very proud of her," FSU coach Marynell Meadors said. "Allison's been through a lot in four years here, and it's good to be ending on a positive note this season. But this team is not done this year. We have some things to prove."

The victory was the Seminoles' second in the past nine games against Maryland (10-15, 2-12). Florida State can earn an ACC tournament seeding as high as sixth but visits the league's top team, Virginia, at 7:30 tonight.

Late Thursday men

■ **No. 6 UCLA 82, No. 13 Arizona State 77:** UCLA hit 11 of 12 free throws in overtime and

Charles O'Bannon scored 23 points as the host Bruins (17-2, 10-2 Pac-10) escaped the Sun Devils (18-6, 8-4).

O'Bannon's three-point play with 52 seconds left tied the score at 66, and there were no more points in regulation. The O'Bannon brothers scored 26 of UCLA's 34 points in the second half; Ed finished with 22 points.

■ **No. 19 Oregon 88, Washington 63:** Orlando Williams scored 20 points and Jeff Potter 16 for the Ducks (15-5, 7-4 Pac-10). The Huskies (2-10, 6-14), missing four players because of suspensions and injuries, suffered their 12th straight road loss.