

OFFICIAL BASKETBALL BOX SCORE -- G A M E T O T A L S

Florida State vs Lady Techsters

12/13 7 p.m. at Ruston, La.

VISITORS: Florida State

| No. | N A M E | | TOT-FG | | 3-PT | | FT | FTA | REBOUNDS | | | PF | TP | A | TO | BLK | S | MIN |
|--------|--------------------|---|--------|-----|------|-----|----|-----|----------|----|-----|----|----|---|----|-----|---|-----|
| | | | FG | FGA | FG | FGA | | | OF | DE | TOT | | | | | | | |
| 30 | Coleman, Latavia | f | 5 | 13 | 1 | 2 | 0 | 2 | 1 | 7 | 8 | 5 | 11 | 1 | 5 | 0 | 2 | 30 |
| 45 | Hampton, Wendy | f | 1 | 4 | 1 | 4 | 2 | 4 | 1 | 0 | 1 | 3 | 5 | 2 | 1 | 0 | 0 | 28 |
| 31 | Moorefield, Lysa | c | 5 | 14 | 0 | 1 | 3 | 4 | 1 | 3 | 4 | 3 | 13 | 1 | 6 | 0 | 1 | 31 |
| 21 | Wyckoff, Brooke | g | 3 | 4 | 0 | 0 | 1 | 2 | 2 | 0 | 2 | 4 | 7 | 3 | 7 | 0 | 2 | 27 |
| 24 | Robinson, Jen | g | 2 | 11 | 1 | 6 | 0 | 0 | 0 | 3 | 3 | 1 | 5 | 0 | 6 | 0 | 1 | 32 |
| 05 | McLin, Latrice | | 0 | 0 | 0 | 0 | 1 | 2 | 2 | 0 | 2 | 1 | 1 | 0 | 0 | 1 | 0 | 13 |
| 10 | Linley, Val | | 0 | 0 | 0 | 0 | 2 | 2 | 0 | 3 | 3 | 1 | 2 | 1 | 2 | 0 | 0 | 8 |
| 20 | Penn, Aletha | | 2 | 3 | 1 | 2 | 0 | 0 | 0 | 1 | 1 | 3 | 5 | 0 | 0 | 0 | 0 | 15 |
| 23 | Davidson, Arleshia | | 5 | 6 | 0 | 0 | 1 | 3 | 2 | 2 | 4 | 2 | 11 | 0 | 2 | 0 | 0 | 17 |
| TEAM | | | 23 | | 4 | | 10 | 19 | 11 | 23 | 34 | 23 | 60 | 8 | 29 | 1 | 6 | 201 |
| TOTALS | | | 23 | 55 | 4 | 15 | 10 | 19 | 11 | 23 | 34 | 23 | 60 | 8 | 29 | 1 | 6 | 201 |

| | | | | | | |
|-----------|-----------------|------|-----------------|------|------------|----------|
| TOTAL FG% | 1st Half: 12-28 | .429 | 2nd Half: 11-27 | .407 | Game: .418 | DEADBALL |
| 3-Pt. FG% | 1st Half: 3- 8 | .375 | 2nd Half: 1- 7 | .143 | Game: .267 | REBOUNDS |
| F Throw % | 1st Half: 2- 4 | .500 | 2nd Half: 8-15 | .533 | Game: .526 | 3 |

HOME TEAM: Lady Techsters

| No. | N A M E | | TOT-FG | | 3-PT | | FT | FTA | REBOUNDS | | | PF | TP | A | TO | BLK | S | MIN |
|--------|--------------------|---|--------|-----|------|-----|----|-----|----------|----|-----|----|----|----|----|-----|----|-----|
| | | | FG | FGA | FG | FGA | | | OF | DE | TOT | | | | | | | |
| 21 | Maxwell, Monica | f | 1 | 7 | 1 | 3 | 2 | 2 | 0 | 1 | 1 | 0 | 5 | 1 | 2 | 0 | 2 | 18 |
| 30 | Wilson, Amanda | f | 13 | 18 | 0 | 0 | 4 | 6 | 2 | 6 | 8 | 1 | 30 | 0 | 0 | 0 | 2 | 40 |
| 34 | Burras, Alisa | c | 1 | 5 | 0 | 0 | 3 | 4 | 3 | 6 | 9 | 4 | 5 | 0 | 1 | 0 | 3 | 20 |
| 10 | Stallworth, LaQuan | g | 8 | 10 | 0 | 0 | 4 | 4 | 0 | 4 | 4 | 1 | 20 | 6 | 5 | 0 | 4 | 35 |
| 35 | Jackson, Tamicha | g | 8 | 16 | 1 | 2 | 0 | 0 | 1 | 4 | 5 | 1 | 17 | 8 | 4 | 0 | 4 | 38 |
| 15 | Cochran, Katie | | 0 | 0 | 0 | 0 | 2 | 2 | 0 | 1 | 1 | 1 | 2 | 0 | 0 | 0 | 0 | 3 |
| 23 | Butler, Danielle | | 0 | 0 | 0 | 0 | 0 | 0 | 0 | 0 | 0 | 0 | 0 | 0 | 0 | 0 | 0 | 1 |
| 33 | Scheppmann, Jamie | | 1 | 4 | 0 | 1 | 1 | 1 | 2 | 2 | 4 | 3 | 3 | 0 | 1 | 0 | 3 | 27 |
| 52 | Gilmore, Priya | | 0 | 1 | 0 | 0 | 0 | 0 | 0 | 0 | 0 | 1 | 0 | 0 | 2 | 0 | 0 | 7 |
| 54 | Bowman, Melshika | | 1 | 2 | 0 | 0 | 2 | 2 | 0 | 1 | 1 | 5 | 4 | 0 | 0 | 0 | 0 | 9 |
| TEAM | | | 33 | | 2 | | 18 | 21 | 9 | 27 | 36 | 17 | 86 | 15 | 15 | 0 | 18 | 198 |
| TOTALS | | | 33 | 63 | 2 | 6 | 18 | 21 | 9 | 27 | 36 | 17 | 86 | 15 | 15 | 0 | 18 | 198 |

| | | | | | | |
|-----------|-----------------|-------|-----------------|------|------------|----------|
| PAL FG% | 1st Half: 16-31 | .516 | 2nd Half: 17-32 | .531 | Game: .524 | DEADBALL |
| 3-Pt. FG% | 1st Half: 2- 5 | .400 | 2nd Half: 0- 1 | .000 | Game: .333 | REBOUNDS |
| F Throw % | 1st Half: 3- 3 | 1.000 | 2nd Half: 15-18 | .833 | Game: .857 | 1 |

OFFICIALS:

TECHNICAL FOULS:

Florida State - none

Lady Techsters - none

ATTENDANCE:

| SCORE BY PERIODS: | | 1st | 2nd | OT1 | OT2 | OT3 | OT4 | TOTAL |
|-------------------|--|-----|-----|-----|-----|-----|-----|-------|
| Florida State | | 29 | 31 | | | | | 60 |
| Lady Techsters | | 37 | 49 | | | | | 86 |

| Florida State at Lady Techsters | | 12/13 | | 7 p.m. | | PAGE 001 |
|---------------------------------|-------|-------|-------|--------|---------|-------------------------------|
| HOME TEAM: Lady Techsters | | TIME | SCORE | BY | PLAYERS | VISITORS: Florida State |
| TURNOVER by Stallworth, L | 19:57 | | | | | |
| made LAYUP by Wilson, Amand | 19:48 | 2-0 | H 2 | | | |
| ASSIST by Stallworth, L | 19:48 | | | | | |
| | 19:30 | | | | | TURNOVER by Wyckoff, Broo |
| STEAL by Stallworth, L | 19:28 | | | | | |
| made LAYUP by Stallworth, L | 19:25 | 4-0 | H 4 | | | |
| | 19:13 | | | | | TURNOVER by Moorefield, L |
| STEAL by Wilson, Amand | 19:11 | | | | | |
| made LAYUP by Stallworth, L | 18:40 | 6-0 | H 6 | | | |
| | 18:35 | | | | | TURNOVER by Coleman, Lata |
| | 18:04 | | | | | FOUL on Moorefield, L(P1T1) |
| | 17:39 | 6-2 | H 4 | | | made LAYUP by Moorefield, L |
| FOUL on Burras, Alisa(P1T1) | 17:31 | | | | | |
| made LAYUP by Burras, Alisa | 17:31 | 6-3 | H 3 | | | made F THROW by Moorefield, L |
| ASSIST by Maxwell, Moni | 17:24 | 8-3 | H 5 | | | |
| | 17:24 | | | | | |
| | 17:05 | 8-5 | H 3 | | | made JUMPER by Moorefield, L |
| made LAYUP by Stallworth, L | 17:05 | | | | | ASSIST by Hampton, Wend |
| | 16:43 | 10-5 | H 5 | | | |
| made F THROW by Stallworth, L | 16:43 | | | | | FOUL on Moorefield, L(P2T2) |
| | 16:36 | 11-5 | H 6 | | | |
| STEAL by Maxwell, Moni | 16:31 | | | | | TURNOVER by Wyckoff, Broo |
| | 16:19 | 11-8 | H 3 | | | |
| made LAYUP by Wilson, Amand | 16:01 | 13-8 | H 5 | | | made 3-PNTR by Robinson, Jen |
| ASSIST by Jackson, Tami | 16:01 | | | | | |
| | 15:43 | 13-11 | H 2 | | | made 3-PNTR by Hampton, Wend |
| | 15:43 | | | | | ASSIST by Wyckoff, Broo |
| --- MEDIA TIMEOUT --- | 15:37 | | | | | |
| made JUMPER by Stallworth, L | 15:20 | 15-11 | H 4 | | | |
| | 14:32 | | | | | TURNOVER by Davidson, Arl |
| STEAL by Burras, Alisa | 14:30 | | | | | FOUL on Wyckoff, Broo(P1T3) |
| | 14:15 | | | | | |
| TURNOVER by Stallworth, L | 14:11 | | | | | |
| | 14:00 | 15-13 | H 2 | | | made JUMPER by Davidson, Arl |
| made JUMPER by Wilson, Amand | 14:00 | | | | | ASSIST by Wyckoff, Broo |
| ASSIST by Stallworth, L | 13:40 | 17-13 | H 4 | | | |
| made LAYUP by Wilson, Amand | 13:40 | | | | | |
| ASSIST by Jackson, Tami | 13:14 | 19-13 | H 6 | | | |
| | 13:14 | | | | | |
| | 13:08 | | | | | --- 20sec TIMEOUT --- |
| | 12:02 | | | | | TURNOVER by Wyckoff, Broo |
| STEAL by Stallworth, L | 11:58 | | | | | |
| made LAYUP by Jackson, Tami | 11:56 | 21-13 | H 8 | | | |
| ASSIST by Stallworth, L | 11:56 | | | | | |
| | 11:51 | 21-15 | H 6 | | | made JUMPER by Robinson, Jen |
| FOUL on Bowman, Melsh(P1T2) | 11:35 | | | | | |
| | 11:32 | | | | | TURNOVER by Robinson, Jen |
| STEAL by Scheppmann, J | 11:30 | | | | | |
| made LAYUP by Scheppmann, J | 11:24 | 23-15 | H 8 | | | |
| ASSIST by Jackson, Tami | 11:24 | | | | | |
| | 11:19 | 23-17 | H 6 | | | made LAYUP by Davidson, Arl |
| FOUL on Bowman, Melsh(P2T3) | 11:19 | | | | | |
| | 11:17 | 23-18 | H 5 | | | made F THROW by Davidson, Arl |
| | 11:03 | | | | | TURNOVER by Linley, Val |
| STEAL by Scheppmann, J | 11:01 | | | | | |
| | 10:56 | | | | | FOUL on Penn, Aletha (P1T4) |
| TURNOVER by Gilmore, Priy | 10:42 | | | | | |
| | 10:23 | 23-20 | H 3 | | | made JUMPER by Davidson, Arl |
| made JUMPER by Jackson, Tami | 10:10 | 25-20 | H 5 | | | |
| | 09:51 | 25-23 | H 2 | | | made 3-PNTR by Coleman, Lata |
| made LAYUP by Jackson, Tami | 09:31 | 27-23 | H 4 | | | |
| | 09:10 | | | | | TURNOVER by Moorefield, L |
| STEAL by Jackson, Tami | 09:08 | | | | | |
| TURNOVER by Jackson, Tami | 08:54 | | | | | |
| | 08:52 | | | | | STEAL by Coleman, Lata |
| | 08:28 | | | | | TURNOVER by Robinson, Jen |
| TURNOVER by Stallworth, L | 08:23 | | | | | |
| | 08:19 | | | | | STEAL by Robinson, Jen |
| FOUL on Scheppmann, J(P1T4) | 07:31 | | | | | --- MEDIA TIMEOUT --- |
| | 07:29 | | | | | |
| STEAL by Maxwell, Moni | 07:24 | | | | | TURNOVER by Robinson, Jen |
| | 07:21 | | | | | |
| | 06:25 | | | | | FOUL on Hampton, Wend(P1T5) |
| | 05:56 | | | | | TURNOVER by Robinson, Jen |
| STEAL by Burras, Alisa | 05:52 | | | | | |

| | | | | | | |
|-------------------------------|-------|-------|---|---------------|--|--------------------------------|
| TURNOVER by Maxwell, Moni | 05:39 | | | | | |
| | 05:28 | | | | | TURNOVER by Hampton, Wend |
| TURNOVER by Jackson, Tami | 04:27 | | | | | |
| made 3-PNTR by Maxwell, Moni | 03:50 | 30-23 | H | 7 | | |
| ASSIST by Jackson, Tami | 03:50 | | | | | |
| FOUL on Burras, Alisa(P2T5) | 03:34 | | | | | |
| | 03:34 | | | | | missd F THROW by Davidson, Arl |
| | 03:34 | | | | | missd F THROW by Davidson, Arl |
| | 03:22 | | | | | FOUL on Coleman, Lata(P1T6) |
| | 03:08 | | | | | FOUL on Wyckoff, Broo(P2T7) |
| made F THROW by Maxwell, Moni | 03:08 | 31-23 | H | 8 | | |
| made F THROW by Maxwell, Moni | 03:08 | 32-23 | H | 9 | | |
| | 02:43 | 32-25 | H | 7 | | made LAYUP by Wyckoff, Broo |
| TURNOVER by Gilmore, Priy | 02:27 | | | | | |
| | 02:17 | | | | | TURNOVER by Robinson, Jen |
| | 01:45 | 32-27 | H | 5 | | made JUMPER by Coleman, Lata |
| | 01:45 | | | | | ASSIST by Wyckoff, Broo |
| | 01:14 | 32-29 | H | 3 | | made JUMPER by Moorefield, L |
| TURNOVER by Jackson, Tami | 00:49 | | | | | |
| made JUMPER by Jackson, Tami | 00:35 | 34-29 | H | 5 | | |
| | 00:03 | | | | | TURNOVER by Moorefield, L |
| STEAL by Burras, Alisa | 00:00 | | | | | |
| made 3-PNTR by Jackson, Tami | 00:00 | 37-29 | H | 8 | | |
| SCORE: Lady Techsters | | 37 | | Florida State | | 29 |

OFFICIAL BASKETBALL BOX SCORE -- G A M E T O T A L S -- END OF PERIOD 1
 Florida State vs Lady Techsters
 12/13 7 p.m. at Ruston, La.

VISITORS: Florida State

| | | TOT-FG | | 3-PT | | | | REBOUNDS | | | | | | | | | | |
|--------|--------------------|--------|-------|------|-------|-----|-------|----------|----|----|-----|----|----|---|----|-----|---|-----|
| No. | N A M E | | FG | FGA | FG | FGA | FT | FTA | OF | DE | TOT | PF | TP | A | TO | BLK | S | MIN |
| 30 | Coleman, Latavia | f | 2 | 6 | 1 | 2 | 0 | 0 | 0 | 6 | 6 | 1 | 5 | 0 | 1 | 0 | 1 | 15 |
| 45 | Hampton, Wendy | f | 1 | 3 | 1 | 3 | 0 | 0 | 0 | 0 | 0 | 1 | 3 | 1 | 1 | 0 | 0 | 16 |
| 31 | Moorefield, Lysa | c | 3 | 9 | 0 | 0 | 1 | 1 | 1 | 0 | 1 | 2 | 7 | 0 | 3 | 0 | 0 | 15 |
| 21 | Wyckoff, Brooke | g | 1 | 1 | 0 | 0 | 0 | 0 | 1 | 0 | 1 | 2 | 2 | 3 | 3 | 0 | 0 | 14 |
| 24 | Robinson, Jen | g | 2 | 6 | 1 | 3 | 0 | 0 | 0 | 3 | 3 | 0 | 5 | 0 | 5 | 0 | 1 | 17 |
| 05 | McLin, Latrice | | 0 | 0 | 0 | 0 | 0 | 0 | 1 | 0 | 1 | 0 | 0 | 0 | 0 | 0 | 0 | 4 |
| 10 | Linley, Val | | 0 | 0 | 0 | 0 | 0 | 0 | 0 | 0 | 0 | 0 | 0 | 0 | 1 | 0 | 0 | 3 |
| 20 | Penn, Aletha | | 0 | 0 | 0 | 0 | 0 | 0 | 0 | 0 | 0 | 1 | 0 | 0 | 0 | 0 | 0 | 7 |
| 23 | Davidson, Arleshia | | 3 | 3 | 0 | 0 | 1 | 3 | 2 | 1 | 3 | 0 | 7 | 0 | 1 | 0 | 0 | 9 |
| TEAM | | | | | | | | | 2 | 2 | 4 | | | | | | | |
| TOTALS | | | 12 | 28 | 3 | 8 | 2 | 4 | 7 | 12 | 19 | 7 | 29 | 4 | 15 | 0 | 2 | 100 |

TOTAL FG% 1st Half: 12-28 .429 2nd Half: 0-0 .000 Game: .429 DEADBALL
 3-Pt. FG% 1st Half: 3-8 .375 2nd Half: 0-0 .000 Game: .375 REBOUNDS
 F Throw % 1st Half: 2-4 .500 2nd Half: 0-0 .000 Game: .500 1

HOME TEAM: Lady Techsters

| No. | N A M E | | TOT-FG | | 3-PT | | FT | FTA | REBOUNDS | | | PF | TP | A | TO | BLK | S | MIN |
|--------|--------------------|---|--------|-----|------|-----|----|-----|----------|----|-----|----|----|---|----|-----|----|-----|
| | | | FG | FGA | FG | FGA | | | OF | DE | TOT | | | | | | | |
| 21 | Maxwell, Monica | f | 1 | 5 | 1 | 3 | 2 | 2 | 0 | 1 | 1 | 0 | 5 | 1 | 1 | 0 | 2 | 14 |
| 30 | Wilson, Amanda | f | 4 | 8 | 0 | 0 | 0 | 0 | 1 | 3 | 4 | 0 | 8 | 0 | 0 | 0 | 1 | 20 |
| 34 | Burras, Alisa | c | 1 | 4 | 0 | 0 | 0 | 0 | 1 | 3 | 4 | 2 | 2 | 0 | 0 | 0 | 3 | 13 |
| 10 | Stallworth, LaQuan | g | 4 | 4 | 0 | 0 | 1 | 1 | 0 | 1 | 1 | 0 | 9 | 3 | 3 | 0 | 2 | 15 |
| 35 | Jackson, Tamicha | g | 5 | 7 | 1 | 1 | 0 | 0 | 0 | 1 | 1 | 0 | 11 | 4 | 3 | 0 | 1 | 18 |
| 33 | Scheppmann, Jamie | | 1 | 3 | 0 | 1 | 0 | 0 | 1 | 1 | 2 | 1 | 2 | 0 | 0 | 0 | 2 | 13 |
| 52 | Gilmore, Priya | | 0 | 0 | 0 | 0 | 0 | 0 | 0 | 0 | 0 | 0 | 0 | 0 | 2 | 0 | 0 | 5 |
| 54 | Bowman, Melshika | | 0 | 0 | 0 | 0 | 0 | 0 | 0 | 0 | 0 | 2 | 0 | 0 | 0 | 0 | 0 | 2 |
| TEAM | | | | | | | | | 0 | 0 | 0 | | | | | | | |
| TOTALS | | | 16 | 31 | 2 | 5 | 3 | 3 | 3 | 10 | 13 | 5 | 37 | 8 | 9 | 0 | 11 | 100 |

TOTAL FG% 1st Half: 16-31 .516 2nd Half: 0-0 .000 Game: .516 DEADBALL
 3-Pt. FG% 1st Half: 2-5 .400 2nd Half: 0-0 .000 Game: .400 REBOUNDS
 F Throw % 1st Half: 3-3 1.000 2nd Half: 0-0 .000 Game: 1.000 0

OFFICIALS:

TECHNICAL FOULS:

Florida State - none
 Lady Techsters - none

ATTENDANCE:

SCORE BY PERIODS:

Florida State 1st 2nd OT1 OT2 OT3 OT4 TOTAL 29
 Lady Techsters 37 37

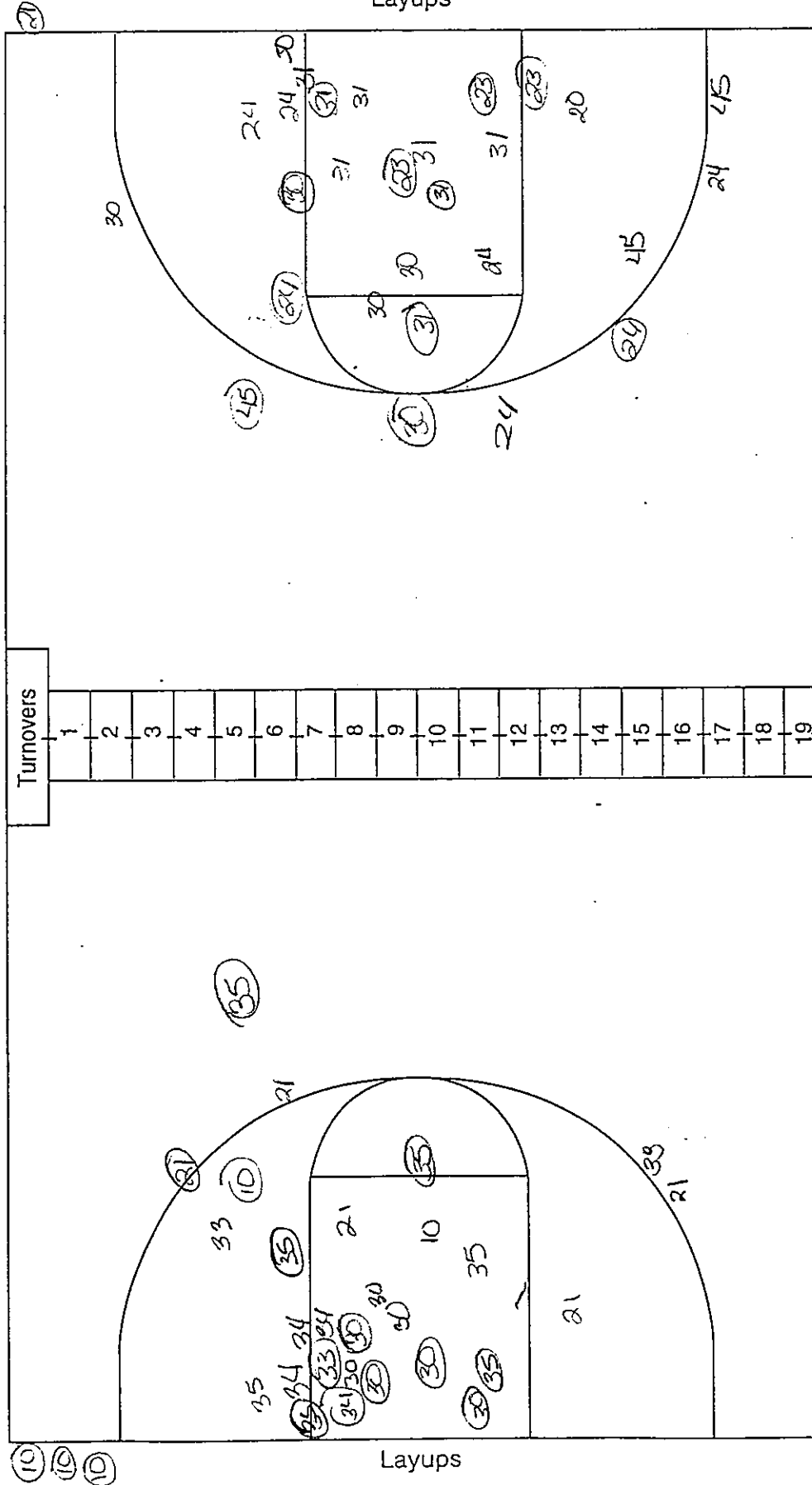
NCAA® BASKETBALL SHOT CHART

First Half

Second Half

(Circle one)

Layups



Attempted _____

Made _____

Percentage _____

86-600

Attempted _____

Made _____

Percentage _____

Team FSUTeam John

| Florida State at Lady Techsters | | | | 12/13 | 7 p.m. | |
|---------------------------------------|-------|-------|-----|--------------------------------|--------|----------|
| - - - S E C O N D H A L F P L A Y B Y | | | | | | PAGE 001 |
| HOME TEAM: Lady Techsters | TIME | SCORE | MAR | VISITORS: Florida State | | |
| STEAL by Wilson, Amand | 19:55 | | | TURNOVER by Wyckoff, Broo | | |
| | 19:54 | | | | | |
| | 19:53 | | | REBOUND(DEF) by Moorefield, L | | |
| | 19:42 | | | REBOUND(OFF) by Hampton, Wend | | |
| REBOUND(DEF) by Wilson, Amand | 19:13 | | | | | |
| TURNOVER by Burras, Alisa | 19:00 | | | | | |
| | 18:58 | | | STEAL by Wyckoff, Broo | | |
| REBOUND(DEF) by Stallworth, L | 18:55 | | | | | |
| made JUMPER by Wilson, Amand | 18:43 | 39-29 | H10 | | | |
| ASSIST by Stallworth, L | 18:43 | | | | | |
| | 18:31 | 39-31 | H 8 | made JUMPER by Wyckoff, Broo | | |
| REBOUND(OFF) by Burras, Alisa | 18:12 | | | | | |
| REBOUND(OFF) by Burras, Alisa | 18:08 | | | | | |
| | 18:02 | | | REBOUND(DEF) by Coleman, Lata | | |
| | 17:53 | | | FOUL on Coleman, Lata(P2T1) | | |
| | 17:53 | 39-32 | H 7 | made F THROW by Hampton, Wend | | |
| | 17:53 | | | missd F THROW by Hampton, Wend | | |
| REBOUND(DEF) by Burras, Alisa | 17:53 | | | | | |
| | 17:44 | | | FOUL on Robinson, Jen(P1T2) | | |
| | 17:23 | | | FOUL on Coleman, Lata(P3T3) | | |
| made F THROW by Burras, Alisa | 17:23 | 40-32 | H 8 | | | |
| made F THROW by Burras, Alisa | 17:23 | 41-32 | H 9 | | | |
| | 17:22 | | | TURNOVER by Coleman, Lata | | |
| made LAYUP by Wilson, Amand | 17:10 | 43-32 | H11 | | | |
| | 16:40 | | | REBOUND(OFF) by Coleman, Lata | | |
| REBOUND(DEF) by Jackson, Tami | 16:34 | | | FOUL on Davidson, Arl(P1T4) | | |
| | 16:23 | | | | | |
| missd F THROW by Burras, Alisa | 16:23 | | | | | |
| made F THROW by Burras, Alisa | 16:23 | 44-32 | H12 | | | |
| REBOUND(DEF) by Burras, Alisa | 16:11 | | | | | |
| | 16:02 | | | FOUL on Hampton, Wend(P2T5) | | |
| missd F THROW by Wilson, Amand | 16:02 | | | | | |
| made F THROW by Wilson, Amand | 16:02 | 45-32 | H13 | | | |
| | 15:54 | 45-34 | H11 | made JUMPER by Davidson, Arl | | |
| made LAYUP by Stallworth, L | 15:35 | 47-34 | H13 | | | |
| | 15:28 | 47-36 | H11 | made JUMPER by Wyckoff, Broo | | |
| made JUMPER by Jackson, Tami | 15:14 | 49-36 | H13 | | | |
| | 15:00 | 49-38 | H11 | made LAYUP by Davidson, Arl | | |
| | 15:00 | | | ASSIST by Hampton, Wend | | |
| made LAYUP by Wilson, Amand | 14:34 | 51-38 | H13 | | | |
| REBOUND(DEF) by Scheppmann, J | 14:25 | | | | | |
| made LAYUP by Wilson, Amand | 14:14 | 53-38 | H15 | | | |
| | 14:07 | | | --- TIMEOUT # 1 --- | | |
| | 13:57 | | | TURNOVER by Coleman, Lata | | |
| STEAL by Jackson, Tami | 13:55 | | | | | |
| REBOUND(OFF) by Jackson, Tami | 13:51 | | | | | |
| made JUMPER by Wilson, Amand | 13:46 | 55-38 | H17 | | | |
| ASSIST by Jackson, Tami | 13:46 | | | | | |
| | 13:26 | 55-40 | H15 | made JUMPER by Coleman, Lata | | |
| | 13:07 | | | REBOUND(DEF) by Penn, Aletha | | |
| | 12:55 | 55-42 | H13 | made JUMPER by Moorefield, L | | |
| FOUL on Burras, Alisa(P3T1) | 12:54 | | | missd F THROW by Moorefield, L | | |
| | 12:54 | | | | | |
| REBOUND(DEF) by Burras, Alisa | 12:54 | | | | | |
| FOUL on Burras, Alisa(P4T2) | 12:43 | | | | | |
| --- TIMEOUT # 1 --- | 12:43 | | | | | |
| | 12:36 | 55-44 | H11 | made JUMPER by Moorefield, L | | |
| | 12:36 | | | ASSIST by Coleman, Lata | | |
| | 12:15 | | | FOUL on Penn, Aletha (P2T6) | | |
| TURNOVER by Maxwell, Moni | 12:05 | | | | | |
| | 12:03 | | | STEAL by Moorefield, L | | |
| | 11:41 | | | FOUL on Penn, Aletha (P3T7) | | |
| FOUL on Wilson, Amand(P1T3) | 11:23 | | | | | |
| | 11:19 | 55-47 | H 8 | made 3-PNTR by Penn, Aletha | | |
| TURNOVER by Stallworth, L | 10:57 | | | | | |
| | 10:44 | | | TURNOVER by Coleman, Lata | | |
| | 10:32 | | | REBOUND(DEF) by Moorefield, L | | |
| FOUL on Stallworth, L(P1T4) | 10:22 | | | | | |
| --- 20sec TIMEOUT --- | 10:22 | | | | | |
| | 10:20 | | | TURNOVER by Coleman, Lata | | |
| STEAL by Stallworth, L | 10:18 | | | | | |
| TURNOVER by Stallworth, L | 10:11 | | | | | |
| | 10:11 | | | STEAL by Coleman, Lata | | |
| FOUL on Bowman, Melsh(P3T5) | 10:11 | | | | | |
| | 10:03 | | | TURNOVER by Robinson, Jen | | |
| STEAL by Jackson, Tami | 10:01 | | | | | |

| | | | | |
|--------------------------------|-------|-------|-----|--------------------------------|
| made LAYUP by Jackson, Tami | 09:59 | 57-47 | H10 | |
| FOUL on Bowman, Melsh(P4T6) | 09:44 | | | |
| | 09:44 | | | missd F THROW by Coleman, Lata |
| | 09:44 | | | missd F THROW by Coleman, Lata |
| REBOUND(DEF) by Jackson, Tami | 09:28 | | | |
| made LAYUP by Stallworth, L | 09:17 | 59-47 | H12 | |
| ASSIST by Jackson, Tami | 09:17 | | | |
| REBOUND(DEF) by Wilson, Amand | 09:11 | | | |
| made LAYUP by Wilson, Amand | 09:11 | 61-47 | H14 | |
| ASSIST by Jackson, Tami | 09:11 | | | |
| | 09:11 | | | --- 20sec TIMEOUT --- |
| | 09:10 | | | TURNOVER by Moorefield, L |
| STEAL by Scheppmann, J | 09:07 | | | |
| | 08:57 | | | FOUL on Hampton, Wend(P3T8) |
| made F THROW by Scheppmann, J | 08:57 | 62-47 | H15 | |
| FOUL on Jackson, Tami(P1T7) | 08:49 | | | |
| | 08:49 | 62-48 | H14 | made F THROW by Linley, Val |
| | 08:49 | 62-49 | H13 | made F THROW by Linley, Val |
| REBOUND(OFF) by Scheppmann, J | 08:38 | | | |
| | 08:32 | | | REBOUND(DEF) by Linley, Val |
| | 08:22 | | | FOUL on Wyckoff, Broo(P3T9) |
| | 08:22 | | | TURNOVER by Wyckoff, Broo |
| | 08:07 | | | REBOUND(DEF) by Davidson, Arl |
| FOUL on Scheppmann, J(P2T8) | 07:58 | | | |
| | 07:58 | 62-50 | H12 | made F THROW by Hampton, Wend |
| | 07:58 | | | missd F THROW by Hampton, Wend |
| REBOUND(DEF) by Stallworth, L | 07:58 | | | |
| REBOUND(OFF) by Wilson, Amand | 07:48 | | | |
| made LAYUP by Wilson, Amand | 07:46 | 64-50 | H14 | |
| | 07:34 | 64-52 | H12 | made JUMPER by Coleman, Lata |
| | 07:34 | | | ASSIST by Linley, Val |
| | 07:24 | | | FOUL on Coleman, Lata(P4T10) |
| missd F THROW by Wilson, Amand | 07:24 | | | |
| | 07:24 | | | REBOUND(DEF) by Linley, Val |
| | 07:24 | 64-54 | H10 | made LAYUP by Penn, Aletha |
| made JUMPER by Bowman, Melsh | 06:52 | 66-54 | H12 | |
| ASSIST by Stallworth, L | 06:52 | | | |
| | 06:41 | | | TURNOVER by Davidson, Arl |
| | 06:22 | | | FOUL on Coleman, Lata(P5T11) |
| made F THROW by Wilson, Amand | 06:22 | 67-54 | H13 | |
| made F THROW by Wilson, Amand | 06:22 | 68-54 | H14 | |
| | 06:13 | | | REBOUND(OFF) by Wyckoff, Broo |
| | 06:07 | | | TURNOVER by Linley, Val |
| TURNOVER by Jackson, Tami | 05:57 | | | |
| | 05:54 | | | STEAL by Wyckoff, Broo |
| | 05:52 | | | TURNOVER by Wyckoff, Broo |
| STEAL by Stallworth, L | 05:51 | | | |
| made LAYUP by Stallworth, L | 05:47 | 70-54 | H16 | |
| | 05:34 | | | --- TIMEOUT # 2 --- |
| | 05:29 | | | TURNOVER by Moorefield, L |
| STEAL by Jackson, Tami | 05:27 | | | |
| made LAYUP by Jackson, Tami | 05:24 | 72-54 | H18 | |
| REBOUND(DEF) by Wilson, Amand | 05:09 | | | |
| | 04:55 | | | FOUL on Moorefield, L(P3T12) |
| made F THROW by Bowman, Melsh | 04:55 | 73-54 | H19 | |
| made F THROW by Bowman, Melsh | 04:55 | 74-54 | H20 | |
| REBOUND(DEF) by Stallworth, L | 04:45 | | | |
| | 04:30 | | | FOUL on Davidson, Arl(P2T13) |
| made F THROW by Stallworth, L | 04:30 | 75-54 | H21 | |
| | 04:30 | | | --- TIMEOUT # 3 --- |
| made F THROW by Wilson, Amand | 04:30 | 76-54 | H22 | |
| REBOUND(DEF) by Bowman, Melsh | 04:20 | | | |
| FOUL on Scheppmann, J(P3T9) | 04:04 | | | |
| TURNOVER by Scheppmann, J | 04:04 | | | |
| REBOUND(DEF) by Jackson, Tami | 03:51 | | | |
| made LAYUP by Wilson, Amand | 03:40 | 78-54 | H24 | |
| ASSIST by Stallworth, L | 03:40 | | | |
| | 03:12 | | | FOUL on McLin, Latric(P1T14) |
| made F THROW by Cochran, Kati | 03:12 | 79-54 | H25 | |
| made F THROW by Cochran, Kati | 03:12 | 80-54 | H26 | |
| FOUL on Bowman, Melsh(P5T10) | 02:56 | | | |
| | 02:56 | 80-55 | H25 | made F THROW by Moorefield, L |
| | 02:56 | 80-56 | H24 | made F THROW by Moorefield, L |
| made LAYUP by Stallworth, L | 02:39 | 82-56 | H26 | |
| | 02:31 | 82-58 | H24 | made LAYUP by Coleman, Lata |
| | 02:31 | | | ASSIST by Moorefield, L |
| made JUMPER by Wilson, Amand | 02:13 | 84-58 | H26 | |
| ASSIST by Jackson, Tami | 02:13 | | | |
| | 01:53 | | | TURNOVER by Moorefield, L |
| | 01:22 | | | FOUL on Wyckoff, Broo(P4T15) |

| | | | |
|-------------------------------|-------|-----------|--------------------------------|
| | 01:22 | | TURNOVER by Wyckoff, Broo |
| | 01:05 | | BLOCKED by McLin, Latric |
| | 01:00 | | REBOUND(DEF) by Linley, Val |
| | 00:55 | | REBOUND(OFF) by McLin, Latric |
| FOUL on Gilmore, Priy(P1T11) | 00:55 | | |
| | 00:55 | 84-59 H25 | made F THROW by McLin, Latric |
| REBOUND(DEF) by Cochran, Kati | 00:55 | | missd F THROW by McLin, Latric |
| | 00:39 | | FOUL on Linley, Val (P1T16) |
| made F THROW by Stallworth, L | 00:39 | 85-59 H26 | |
| made F THROW by Stallworth, L | 00:39 | 86-59 H27 | |
| FOUL on Cochran, Kati(P1T12) | 00:31 | | |
| | 00:31 | | missd F THROW by Wyckoff, Broo |
| | 00:31 | 86-60 H26 | made F THROW by Wyckoff, Broo |
| | 00:05 | | REBOUND(DEF) by Moorefield, L |
| SCORE: Lady Techsters | | 86 | Florida State 60 |

NCAA® BASKETBALL SHOT CHART

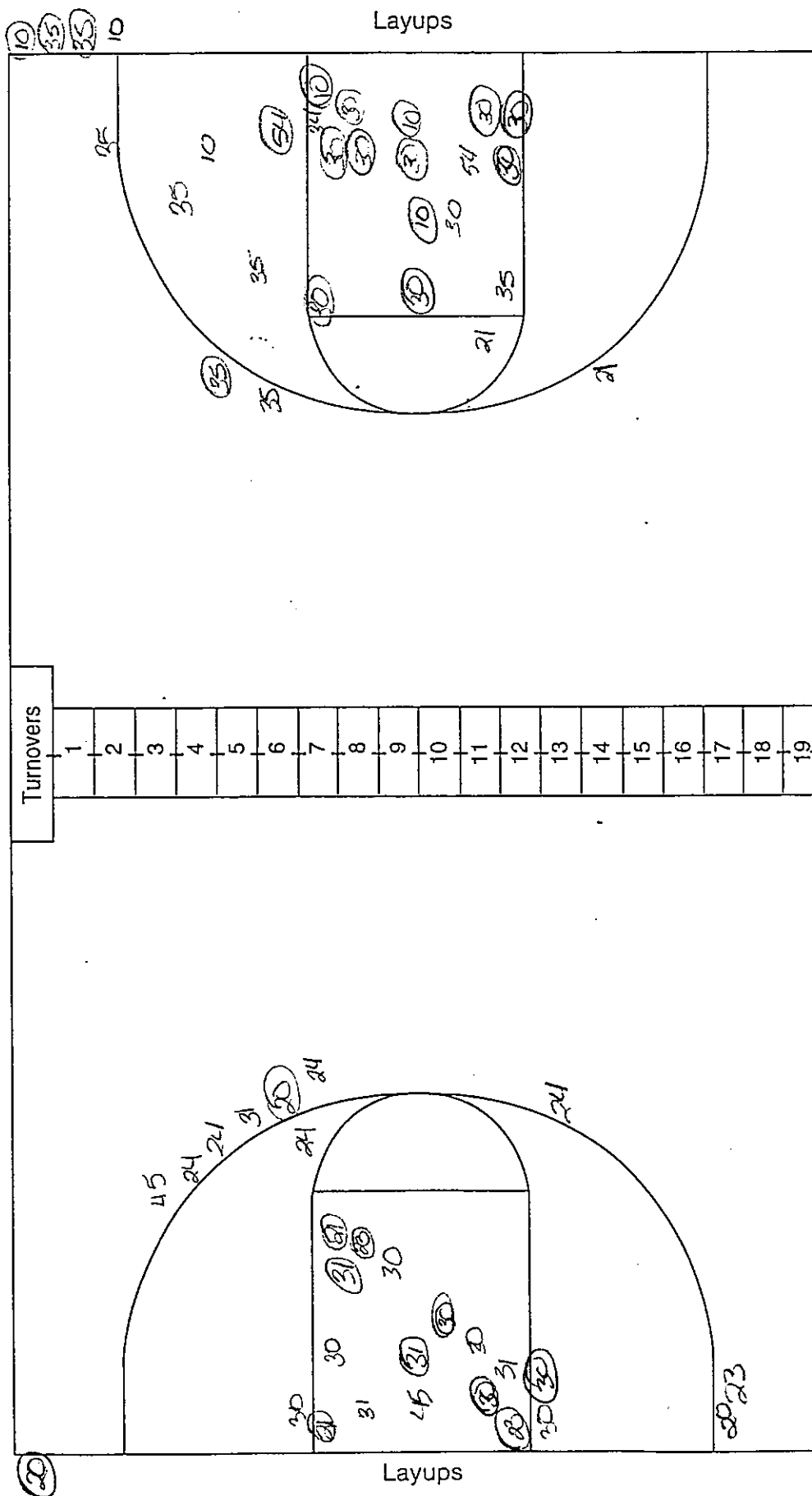
First Half

Second Half

(Circle one)

Team Dech

Team JSU



Attempted _____

Made _____

Percentage _____

Attempted _____

Made _____

Percentage _____