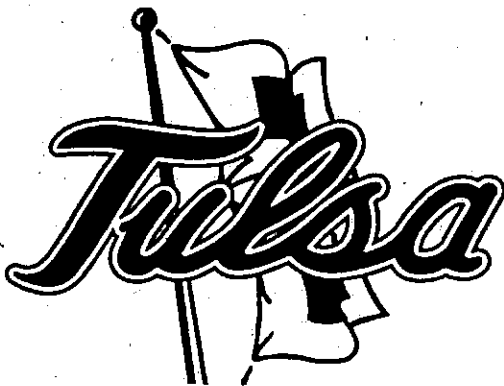
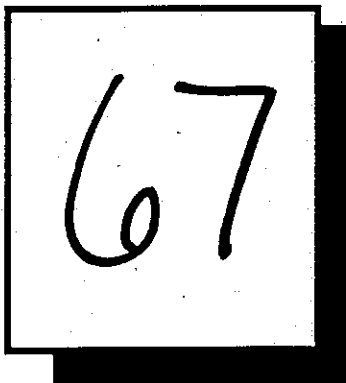


FINAL BOOK



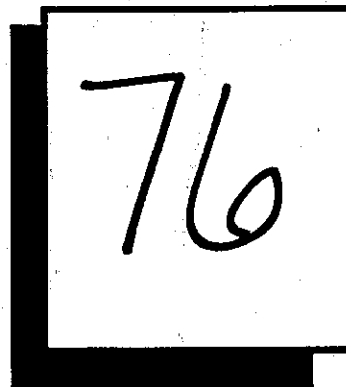
TULSA



0-1 Overall

VS.

FLORIDA STATE



1-0 Overall

7:05 p.m.

SATURDAY, NOVEMBER 14, 1998

TULSA, OKLA.

EXPO SQUARE PAVILION

ATTENDANCE: 1,136

OFFICIAL BASKETBALL BOX SCORE -- G A M E T O T A L S
 Florida State University vs University of Tulsa
 11-14-98 7:05 p.m. at Tulsa, Oklahoma

VISITORS: Florida State University 1-0

		TOT-FG		3-PT		REBOUNDS												
No.	N A M E	FG	FGA	FG	FGA	FT	FTA	OF	DE	TOT	PF	TP	A	TO	BLK	S	MIN	
21	WYCKOFF, Brooke	f	4	13	0	0	3	5	5	4	9	4	11	1	2	0	2	31
30	COLEMAN, Latavia	f	6	12	0	0	0	2	4	5	9	2	12	3	3	0	3	27
41	GRACEY, Tamara	f	1	4	0	0	2	2	1	7	8	3	4	0	3	0	2	27
12	TRAYLOR, April	g	8	15	2	3	5	8	3	4	7	3	23	2	4	0	6	36
24	ROBINSON, Jen	g	5	16	0	6	3	4	0	2	2	4	13	3	3	0	3	36
00	SPRINGLE, Lakesha		0	0	0	0	0	0	0	0	0	0	0	2	1	0	0	7
10	LINLEY, Val		0	2	0	0	2	2	1	2	3	2	2	5	2	0	2	14
11	SUTTON, Angela		0	1	0	0	0	0	0	1	1	0	0	0	1	0	0	3
23	DAVIDSON, Arleshia		4	7	0	0	0	1	1	1	2	4	8	1	1	0	1	10
33	FUCHS, Vanessa		1	5	1	3	0	0	0	0	0	3	3	1	0	0	0	9
TEAM									3	1	4							
TOTALS			29	75	3	12	15	24	18	27	45	25	76	18	20	0	19	200

TOTAL FG% 1st Half: 12-36 .333 2nd Half: 17-39 .436 Game: .387 DEADBALL
 3-Pt. FG% 1st Half: 1- 7 .143 2nd Half: 2- 5 .400 Game: .250 REBOUNDS
 F Throw % 1st Half: 9-12 .750 2nd Half: 6-12 .500 Game: .625 1

HOME TEAM: University of Tulsa 0-1

		TOT-FG		3-PT		REBOUNDS													
No.	N A M E	FG	FGA	FG	FGA	FT	FTA	OF	DE	TOT	PF	TP	A	TO	BLK	S	MIN		
33	OSCEOLA, Lila	f	6	10	0	0	6	6	3	4	7	3	18	3	4	0	0	35	
55	DINKENS, Shequinna	c	1	1	0	0	4	6	1	10	11	0	6	0	3	0	1	28	
3	PITTMAN, Kasie	g	2	10	0	6	7	11	1	4	5	5	11	4	8	0	2	29	
22	STAGNER, Emily	g	1	5	1	5	0	0	0	4	4	2	3	0	3	0	0	17	
32	SMITH, Stephanie	g	2	5	0	1	1	2	0	2	2	2	5	0	3	1	0	18	
11	HALL, Rachel		5	8	0	0	2	2	0	2	2	2	12	0	0	0	1	21	
12	GOYNE, Tammy		2	8	2	5	6	6	0	2	2	2	12	4	5	0	3	29	
40	MORROW, Carla		0	3	0	1	0	0	0	3	3	1	0	0	0	0	0	8	
44	HENKELMANN, Rachel		0	0	0	0	0	0	0	1	1	0	0	2	1	0	1	3	
50	GRINSTEAD, Jessi		0	1	0	0	0	1	1	1	2	5	0	0	1	0	0	12	
TEAM									4	2	6								
TOTALS			19	51	3	18	26	34	10	35	45	22	67	13	28	1	8	200	

TOTAL FG% 1st Half: 10-23 .435 2nd Half: 9-28 .321 Game: .373 DEADBALL
 3-Pt. FG% 1st Half: 1- 7 .143 2nd Half: 2-11 .182 Game: .167 REBOUNDS
 F Throw % 1st Half: 14-20 .700 2nd Half: 12-14 .857 Game: .765 3

OFFICIALS: Scott Yarbrough, Kim Ensminger, Les Williams

TECHNICAL FOULS:

Florida State University - none
 University of Tulsa - none

ATTENDANCE: 1136

SCORE BY PERIODS:

	1st	2nd	OT1	OT2	OT3	OT4	TOTAL
Florida State University	34	42					76
University of Tulsa	35	32					67

Florida State Univer at University of Tulsa				11-14-98	7:05 p.m.
- - - S E C O N D H A L F P L A Y				B Y	P L A Y - - -
HOME TEAM: University of Tulsa		TIME	SCORE	MAR	VISITORS: Florida State Unive
		19:50	35-36	V 1	made JUMPER by TRAYLOR, Apri
		19:50			ASSIST by WYCKOFF, Broo
missed 3-PNTR by PITTMAN, Kasi		19:39			
		19:22			missed LAYUP by TRAYLOR, Apri
missed JUMPER by OSCEOLA, Lila		19:13			
		19:00	35-39	V 4	made 3-PNTR by TRAYLOR, Apri
		19:00			ASSIST by ROBINSON, Jen
--- 20sec TIMEOUT ---		18:51			
made JUMPER by OSCEOLA, Lila		18:42	37-39	V 2	
ASSIST by PITTMAN, Kasi		18:42			
		18:29	37-41	V 4	made LAYUP by ROBINSON, Jen
		18:02			missed JUMPER by COLEMAN, Lata
		17:58			FOUL on WYCKOFF, Broo(P2T1)
FOUL on HALL, Rachel (P1T1)		17:38			
		17:13			FOUL on TRAYLOR, Apri(P2T2)
made F THROW by GOYNE, Tammy		17:13	38-41	V 3	
made F THROW by GOYNE, Tammy		17:13	39-41	V 2	
		16:56	39-43	V 4	made JUMPER by ROBINSON, Jen
		16:56			ASSIST by TRAYLOR, Apri
		16:29			missed JUMPER by TRAYLOR, Apri
missed JUMPER by OSCEOLA, Lila		16:15			
missed 3-PNTR by PITTMAN, Kasi		16:10			
		15:59			missed JUMPER by COLEMAN, Lata
made 3-PNTR by GOYNE, Tammy		15:44	42-43	V 1	
ASSIST by OSCEOLA, Lila		15:44			
FOUL on OSCEOLA, Lila(P3T2)		15:24			
		15:24			--- MEDIA TIMEOUT ---
		15:17			missed JUMPER by FUCHS, Vaness
FOUL on GRINSTEAD, Je(P3T3)		15:13			
		15:05			missed JUMPER by WYCKOFF, Broo
		15:02			FOUL on FUCHS, Vaness(P2T3)
		14:25	42-45	V 3	made JUMPER by DAVIDSON, Arl
		14:25			ASSIST by TRAYLOR, Apri
		14:11			FOUL on WYCKOFF, Broo(P3T4)
made F THROW by HALL, Rachel		14:11	43-45	V 2	
made F THROW by HALL, Rachel		14:11	44-45	V 1	
		14:07	44-47	V 3	made JUMPER by WYCKOFF, Broo
		14:07			ASSIST by LINLEY, Val
		13:58			FOUL on DAVIDSON, Arl(P4T5)
missed 3-PNTR by GOYNE, Tammy		13:55			
FOUL on PITTMAN, Kasi(P2T4)		13:50			
		13:39			missed JUMPER by WYCKOFF, Broo
		13:34			missed LAYUP by COLEMAN, Lata
missed JUMPER by OSCEOLA, Lila		13:17			
		13:13			FOUL on WYCKOFF, Broo(P4T6)
		13:03			missed JUMPER by TRAYLOR, Apri
missed JUMPER by HALL, Rachel		12:50			
FOUL on GRINSTEAD, Je(P4T5)		12:43			
		12:43	44-48	V 4	made F THROW by ROBINSON, Jen
		12:43			missd F THROW by ROBINSON, Jen
		12:26			FOUL on TRAYLOR, Apri(P3T7)
le F THROW by GOYNE, Tammy		12:26	45-48	V 3	
made F THROW by GOYNE, Tammy		12:26	46-48	V 2	
--- MEDIA TIMEOUT ---		11:55			
missed JUMPER by PITTMAN, Kasi		11:29			
		11:08	46-50	V 4	made JUMPER by ROBINSON, Jen

	11:08			ASSIST by COLEMAN, Lata
made JUMPER by OSCEOLA, Lila	10:49	48-50	V 2	
ASSIST by PITTMAN, Kasi	10:49			
	10:25	48-52	V 4	made JUMPER by COLEMAN, Lata
	10:25			ASSIST by SPRINGLE, Lak
missed 3-PNTR by STAGNER, Emil	10:04			
made JUMPER by PITTMAN, Kasi	09:52	50-52	V 2	
	09:43			missed 3-PNTR by ROBINSON, Jen
	09:08			missed JUMPER by WYCKOFF, Broc
made JUMPER by OSCEOLA, Lila	08:58	52-52	T 1	
ASSIST by GOYNE, Tammy	08:58			
	08:46			missed JUMPER by COLEMAN, Lata
	08:44	52-54	V 2	made JUMPER by COLEMAN, Lata
	08:24			missed JUMPER by ROBINSON, Jen
FOUL on GOYNE, Tammy (P2T6)	08:23			
	08:17			missd F THROW by COLEMAN, Lata
	08:17	52-56	V 4	made LAYUP by WYCKOFF, Broo
FOUL on PITTMAN, Kasi(P3T7)	08:17			
	08:17			missd F THROW by WYCKOFF, Broo
	08:17	52-58	V 6	made LAYUP by COLEMAN, Lata
FOUL on GRINSTEAD, Je(P5T8)	08:17			
	08:17			--- MEDIA TIMEOUT ---
	08:14			missd F THROW by COLEMAN, Lata
made JUMPER by HALL, Rachel	07:54	54-58	V 4	
	07:47	54-60	V 6	made LAYUP by COLEMAN, Lata
	07:47			ASSIST by SPRINGLE, Lak
	07:32			missed JUMPER by ROBINSON, Jen
missed 3-PNTR by MORROW, Carla	07:09			
missed JUMPER by HALL, Rachel	07:02			
	06:50	54-62	V 8	made JUMPER by DAVIDSON, Arl
	06:50			ASSIST by FUCHS, Vaness
	06:26			missed JUMPER by COLEMAN, Lata
missed 3-PNTR by PITTMAN, Kasi	06:14			
FOUL on HALL, Rachel (P2T9)	06:12			
	06:12			missd F THROW by TRAYLOR, Apri
missed LAYUP by OSCEOLA, Lila	05:44			
	05:36	54-65	V11	made 3-PNTR by FUCHS, Vaness
	05:36			ASSIST by COLEMAN, Lata
made JUMPER by SMITH, Stepha	05:16	56-65	V 9	
ASSIST by OSCEOLA, Lila	05:16			
	05:06			missed JUMPER by LINLEY, Val
	05:04			FOUL on GRACEY, Tamar(P3T8)
	05:04			--- 20sec TIMEOUT ---
missed 3-PNTR by GOYNE, Tammy	05:04			
made F THROW by DINKENS, Sheq	04:57	57-65	V 8	
made F THROW by DINKENS, Sheq	04:57	58-65	V 7	
	04:42			missed JUMPER by DAVIDSON, Arl
	04:22			missed 3-PNTR by FUCHS, Vaness
	04:03			FOUL on FUCHS, Vaness(P3T9)
made F THROW by SMITH, Stepha	04:03	59-65	V 6	
missd F THROW by SMITH, Stepha	04:03			
	03:45	59-67	V 8	made JUMPER by COLEMAN, Lata
	03:45			ASSIST by ROBINSON, Jen
missed 3-PNTR by STAGNER, Emil	03:25			
	02:59			missed 3-PNTR by ROBINSON, Jen
	02:54	59-69	V10	made JUMPER by COLEMAN, Lata
	02:54			ASSIST by LINLEY, Val
missed JUMPER by HALL, Rachel	02:49			
missed LAYUP by GOYNE, Tammy	02:25			
	02:00			missed JUMPER by COLEMAN, Lata

	01:50			missed JUMPER by WYCKOFF, Broc
	01:29			FOUL on ROBINSON, Jen(P3T10)
	01:29			--- TIMEOUT # 1 ---
missd F THROW by PITTMAN, Kasi	01:29			
made F THROW by PITTMAN, Kasi	01:29	60-69	V 9	
	01:17	60-71	V11	made LAYUP by WYCKOFF, Broo
	01:17			ASSIST by COLEMAN, Lata
	01:03			FOUL on ROBINSON, Jen(P4T11)
made F THROW by GOYNE, Tammy	01:03	61-71	V10	
made F THROW by GOYNE, Tammy	01:03	62-71	V 9	
	00:48			missed JUMPER by GRACEY, Tamar
missed 3-PNTR by STAGNER, Emil	00:41			
FOUL on PITTMAN, Kasi(P4T10)	00:40			
	00:40	62-72	V10	made F THROW by GRACEY, Tamar
	00:40	62-73	V11	made F THROW by GRACEY, Tamar
missed JUMPER by PITTMAN, Kasi	00:29			
FOUL on PITTMAN, Kasi(P5T11)	00:28			
	00:28			missd F THROW by TRAYLOR, Apri
	00:28	62-74	V12	made F THROW by TRAYLOR, Apri
made JUMPER by HALL, Rachel	00:14	64-74	V10	
ASSIST by GOYNE, Tammy	00:14			
	00:05	64-75	V11	made F THROW by ROBINSON, Jen
	00:05	64-76	V12	made F THROW by ROBINSON, Jen
FOUL on STAGNER, Emil(P2T12)	00:02			
ASSIST by HENKELMANN, R	00:00			
made 3-PNTR by STAGNER, Emil	00:00	67-76	V 9	
SCORE: University of Tulsa		67	Florida State University	76

NCAA® BASKETBALL SHOT CHART

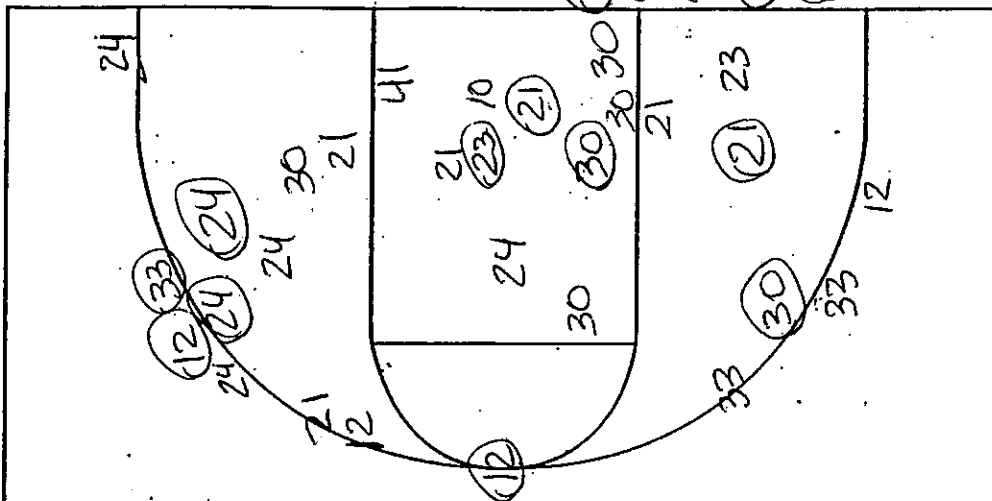
First Half

Second Half

(Circle one)

Layups 24 24 30 24 23 30 30 21

Team FLORIDA STATE

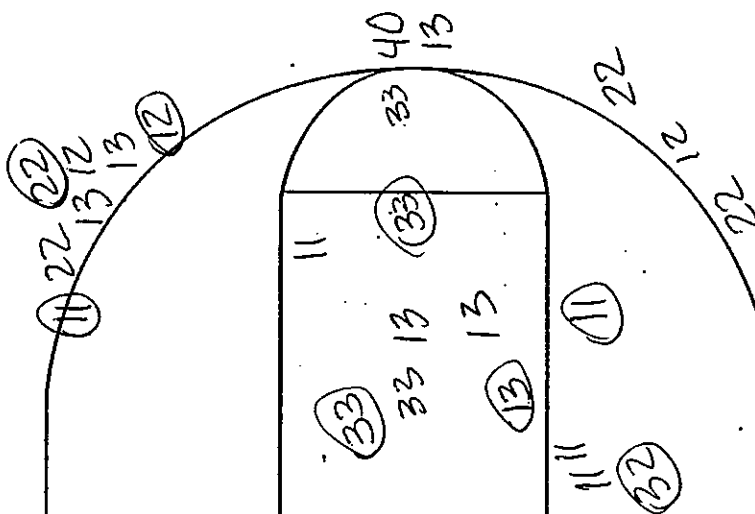


Attempted 39
Made 17
Percentage .43

Turnovers

1	2	3	4	5	6	7	8	9	10	11	12	13	14	15	16	17	18	19
---	---	---	---	---	---	---	---	---	----	----	----	----	----	----	----	----	----	----

Team TULSA



Attempted 28
Made 9
Percentage .321

OFFICIAL BASKETBALL BOX SCORE -- F I R S T H A L F -- END OF PERIOD 1
 Florida State University vs University of Tulsa
 11-14-98 7:05 p.m. at Tulsa, Oklahoma

VISITORS: Florida State University

No.	N A M E	TOT-FG		3-PT				REBOUNDS			PF	TP	A	TO	BLK	S	MIN
		FG	FGA	FG	FGA	FT	FTA	OF	DE	TOT							
21	WYCKOFF, Brooke	f	1	6	0	0	3	4	4	3	7	1	5	0	1	0	1
30	COLEMAN, Latavia	f	0	0	0	0	0	0	0	1	1	2	0	0	2	0	1
41	GRACEY, Tamara	f	1	3	0	0	0	0	1	5	6	2	2	0	2	0	0
12	TRAYLOR, April	g	6	10	1	2	4	5	2	1	3	1	17	0	3	0	5
24	ROBINSON, Jen	g	2	9	0	4	0	0	0	2	2	2	4	1	2	0	1
10	LINLEY, Val		0	1	0	0	2	2	0	0	0	2	2	3	1	0	2
11	SUTTON, Angela		0	1	0	0	0	0	0	1	1	0	0	0	1	0	0
23	DAVIDSON, Arleshia		2	4	0	0	0	1	1	0	1	3	4	1	1	0	0
33	FUCHS, Vanessa		0	2	0	1	0	0	0	0	0	1	0	0	0	0	0
TEAM			0	1	1												
TOTALS			12	36	1	7	9	12	8	14	22	14	34	5	13	0	10

TOTAL FG% 1st Half: 12-36 .333 2nd Half: 0-0 .000 Game: .333 DEADBALL
 3-Pt. FG% 1st Half: 1-7 .143 2nd Half: 0-0 .000 Game: .143 REBOUNDS
 F Throw % 1st Half: 9-12 .750 2nd Half: 0-0 .000 Game: .750 0

HOME TEAM: University of Tulsa

No.	N A M E	TOT-FG		3-PT				REBOUNDS			PF	TP	A	TO	BLK	S	MIN
		FG	FGA	FG	FGA	FT	FTA	OF	DE	TOT							
33	OSCEOLA, Lila	f	3	3	0	0	6	6	1	0	1	2	12	1	1	0	0
55	DINKENS, Shequinna	c	1	1	0	0	2	4	0	5	5	0	4	0	2	0	0
13	PITTMAN, Kasie	g	1	4	0	3	6	9	1	2	3	1	8	2	3	0	1
2	STAGNER, Emily	g	0	1	0	1	0	0	0	4	4	1	0	0	2	0	0
2	SMITH, Stephanie	g	1	4	0	1	0	0	0	2	2	2	2	0	1	1	0
11	HALL, Rachel		3	3	0	0	0	0	0	1	1	0	6	0	0	0	1
12	GOYNE, Tammy		1	4	1	2	0	0	0	1	1	1	3	2	4	0	3
40	MORROW, Carla		0	2	0	0	0	0	0	1	1	1	0	0	0	0	0
44	HENKELMANN, Rachel		0	0	0	0	0	0	0	0	0	0	0	1	1	0	1
50	GRINSTEAD, Jessi		0	1	0	0	0	1	1	1	2	2	0	0	1	0	0
TEAM			1	1	2												
TOTALS			10	23	1	7	14	20	4	18	22	10	35	6	15	1	6

TOTAL FG% 1st Half: 10-23 .435 2nd Half: 0-0 .000 Game: .435 DEADBALL
 3-Pt. FG% 1st Half: 1-7 .143 2nd Half: 0-0 .000 Game: .143 REBOUNDS
 F Throw % 1st Half: 14-20 .700 2nd Half: 0-0 .000 Game: .700 2

OFFICIALS: Scott Yarbrough, Kim Ensminger, Les Williams

TECHNICAL FOULS:

Florida State University - none

University of Tulsa - none

ATTENDANCE:

SCORE BY PERIODS:	1st	2nd	OT1	OT2	OT3	OT4	TOTAL
Florida State University	34						34
University of Tulsa	35						35

HOME TEAM: University of Tulsa	TIME	SCORE	MAR	VISITORS: Florida State Unive
made LAYUP by OSCEOLA, Lila	19:16	2-0	H 2	
ASSIST by PITTMAN, Kasi	19:16			
FOUL on SMITH, Stepha(P1T1)	19:04			
	19:04	2-1	H 1	made F THROW by TRAYLOR, Apri
	19:04	2-2	T 1	made F THROW by TRAYLOR, Apri
	18:51			FOUL on TRAYLOR, Apri(P1T1)
made LAYUP by SMITH, Stepha	18:39	4-2	H 2	
	18:28			missed JUMPER by GRACEY, Tamar
	18:22			missd F THROW by TRAYLOR, Apri
	18:16	4-4	T 2	made LAYUP by TRAYLOR, Apri
	18:13			FOUL on COLEMAN, Lata(P1T2)
FOUL on STAGNER, Emil(P1T2)	18:12			
missed JUMPER by SMITH, Stepha	18:02			
FOUL on PITTMAN, Kasi(P1T3)	17:55			
	17:52			missed JUMPER by WYCKOFF, Broc
	17:41	4-6	V 2	made LAYUP by ROBINSON, Jen
missed 3-PNTR by PITTMAN, Kasi	17:21			
made JUMPER by PITTMAN, Kasi	17:17	6-6	T 3	
	17:17			FOUL on ROBINSON, Jen(P1T3)
missd F THROW by PITTMAN, Kasi	17:17			
	16:56			missed JUMPER by WYCKOFF, Broc
missed 3-PNTR by SMITH, Stepha	16:46			
made JUMPER by HALL, Rachel	16:38	8-6	H 2	
	16:09			missed JUMPER by ROBINSON, Jen
made F THROW by OSCEOLA, Lila	15:50	9-6	H 3	
made F THROW by OSCEOLA, Lila	15:50	10-6	H 4	
- MEDIA TIMEOUT - - -	15:50			
	15:48			FOUL on GRACEY, Tamar(P1T4)
made LAYUP by OSCEOLA, Lila	15:06	12-6	H 6	
ASSIST by GOYNE, Tammy	15:06			
	14:45			missed JUMPER by WYCKOFF, Broc
	14:26			FOUL on COLEMAN, Lata(P2T5)
	14:12			FOUL on DAVIDSON, Arl(P1T6)
missd F THROW by DINKENS, Sheq	14:12			
made F THROW by DINKENS, Sheq	14:12	13-6	H 7	
	13:52	13-8	H 5	made LAYUP by GRACEY, Tamar
	13:52			ASSIST by DAVIDSON, Arl
	13:32			missed 3-PNTR by ROBINSON, Jen
	13:27			missed JUMPER by DAVIDSON, Arl
FOUL on SMITH, Stepha(P2T4)	13:26			
	13:24	13-11	H 2	made 3-PNTR by TRAYLOR, Apri
	13:24			ASSIST by LINLEY, Val
missed JUMPER by MORROW, Carla	13:15			
	13:08			missed JUMPER by ROBINSON, Jen
	12:59	13-13	T 4	made LAYUP by DAVIDSON, Arl
	12:59			ASSIST by LINLEY, Val
FOUL on GRINSTEAD, Je(P1T5)	12:57			
	12:57			missd F THROW by DAVIDSON, Arl
	12:47			FOUL on LINLEY, Val (P1T7)
made F THROW by PITTMAN, Kasi	12:47	14-13	H 1	
made F THROW by PITTMAN, Kasi	12:47	15-13	H 2	
	12:27	15-15	T 5	made JUMPER by DAVIDSON, Arl
missed JUMPER by GOYNE, Tammy	12:15			
	12:04			missed LAYUP by DAVIDSON, Arl
FOUL on OSCEOLA, Lila(P1T6)	12:02			
	11:38			missed 3-PNTR by TRAYLOR, Apri

Player	Time	Score	Play	Player	Time	Score	Play
missed JUMPER by MORROW, Carla	11:20			missed JUMPER by TRAYLOR, Apr			
	11:01			FOUL on WYCKOFF, Broo(P1T8)			
	11:01						
missd F THROW by GRINSTEAD, Je	11:01						
	10:48	15-17	V 2	made LAYUP by TRAYLOR, Apri			
made 3-PNTR by GOYNE, Tammy	10:35	18-17	H 1				
ASSIST by HENKELMANN, R	10:35						
FOUL on GOYNE, Tammy (P1T7)	10:11						
	10:11	18-18	T 6	made F THROW by LINLEY, Val			
	10:11	18-19	V 1	made F THROW by LINLEY, Val			
	09:37			missed LAYUP by TRAYLOR, Apr			
	09:34			missed JUMPER by WYCKOFF, Broo			
	08:58	18-21	V 3	made LAYUP by TRAYLOR, Apri			
missed LAYUP by GOYNE, Tammy	08:41						
made LAYUP by DINKENS, Sheq	08:18	20-21	V 1				
ASSIST by PITTMAN, Kasi	08:18						
	07:56			missed JUMPER by ROBINSON, Je			
	07:53			FOUL on ROBINSON, Jen(P2T9)			
made F THROW by PITTMAN, Kasi	07:53	21-21	T 7				
missd F THROW by PITTMAN, Kasi	07:53						
	07:39			missed JUMPER by FUCHS, Vanes			
	07:28			FOUL on FUCHS, Vaness(P1T10)			
missd F THROW by PITTMAN, Kasi	07:28						
made F THROW by PITTMAN, Kasi	07:28	22-21	H 1				
missed JUMPER by SMITH, Stepha	07:03						
	06:56			missed JUMPER by WYCKOFF, Broo			
missed 3-PNTR by PITTMAN, Kasi	06:50						
made F THROW by OSCEOLA, Lila	06:49	23-21	H 2				
made F THROW by OSCEOLA, Lila	06:49	24-21	H 3				
	06:41			FOUL on DAVIDSON, Arl(P2T11)			
FOUL on MORROW, Carla(P1T8)	06:36						
	06:36	24-22	H 2	made F THROW by TRAYLOR, Apri			
	06:36	24-23	H 1	made F THROW by TRAYLOR, Apri			
missed 3-PNTR by GOYNE, Tammy	06:20						
	06:05			missed JUMPER by TRAYLOR, Apr			
	06:02			FOUL on DAVIDSON, Arl(P3T12)			
made F THROW by DINKENS, Sheq	06:02	25-23	H 2				
missd F THROW by DINKENS, Sheq	06:02						
	05:55			missed JUMPER by LINLEY, Val			
made LAYUP by OSCEOLA, Lila	05:48	27-23	H 4				
ASSIST by GOYNE, Tammy	05:48						
	05:41	27-25	H 2	made JUMPER by ROBINSON, Jen			
	05:41			ASSIST by LINLEY, Val			
	05:09			missed LAYUP by GRACEY, Tama			
	05:04	27-27	T 8	made LAYUP by WYCKOFF, Broo			
	04:18			missed 3-PNTR by ROBINSON, Je			
	03:57			FOUL on LINLEY, Val (P2T13)			
made F THROW by OSCEOLA, Lila	03:57	28-27	H 1				
made F THROW by OSCEOLA, Lila	03:57	29-27	H 2				
--- MEDIA TIMEOUT ---	03:57						
missed JUMPER by GRINSTEAD, Je	03:13						
	03:06			missed LAYUP by SUTTON, Ange			
	03:03	29-29	T 9	made JUMPER by TRAYLOR, Apri			
missed 3-PNTR by PITTMAN, Kasi	02:48						
missed 3-PNTR by STAGNER, Emil	02:31						
	02:23	29-31	V 2	made JUMPER by TRAYLOR, Apri			
	02:23			ASSIST by ROBINSON, Jen			
--- 20sec TIMEOUT ---	02:08						
	01:58			missed 3-PNTR by ROBINSON, Je			

	01:54	29-32	V 3	made F THROW by WYCKOFF, Broo
	01:54			missd F THROW by WYCKOFF, Broo
	01:49			FOUL on GRACEY, Tamar(P2T14)
	01:44			--- 20sec TIMEOUT ---
made F THROW by PITTMAN, Kasi	01:44	30-32	V 2	
made F THROW by PITTMAN, Kasi	01:44	31-32	V 1	
FOUL on OSCEOLA, Lila(P2T10)	01:28			
	01:28	31-33	V 2	made F THROW by WYCKOFF, Broo
	01:28	31-34	V 3	made F THROW by WYCKOFF, Broo
made JUMPER by HALL, Rachel	01:07	33-34	V 1	
ASSIST by OSCEOLA, Lila	01:07			
	00:32			missed 3-PNTR by FUCHS, Vaness
BLOCKED by SMITH, Stepha	00:32			
made JUMPER by HALL, Rachel	00:11	35-34	H 1	
	00:00			missed 3-PNTR by ROBINSON, Jer
SCORE: University of Tulsa		35	Florida State University	34

NCAA® BASKETBALL SHOT CHART

First Half

Second Half

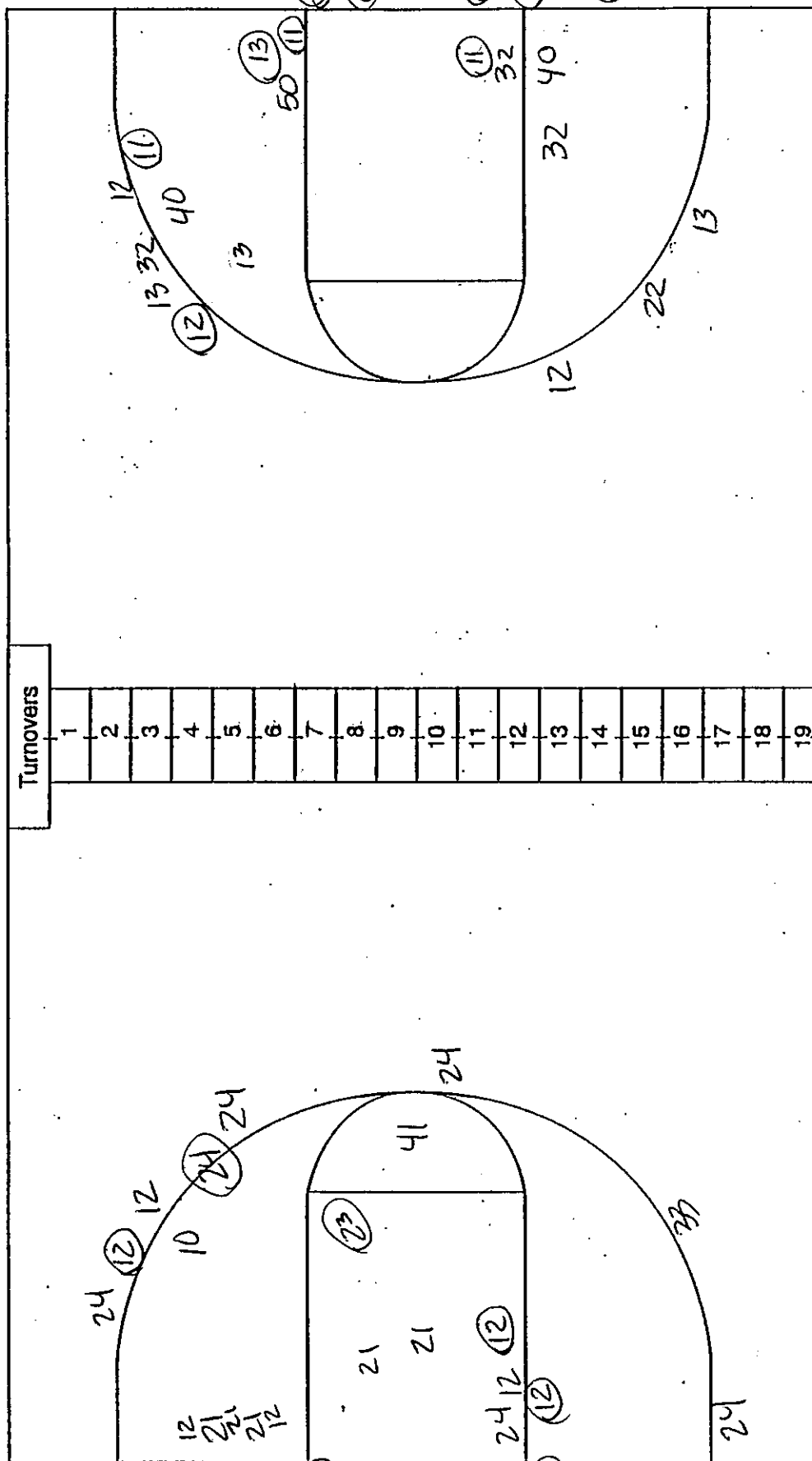
(Circle one)

Team TULSA

Team

Team FLORIDA STATE

Team



Attempted 23

Made 10

Percentage .435

Attempted 36

Made 12

Percentage .333