

FOR IMMEDIATE RELEASE

December 30, 1999

FLORIDA STATE WINS SUN & FUN CLASSIC WITH 76-55 WIN OVER FIU
Senior Latavia Coleman leads all scorers with 19 points and earns MVP honors

MIAMI, Fla. — The Florida State women's basketball team improved to 7-3 on the season with a 76-55 win over host Florida International to win the 15th Annual Sun & Fun Classic. The Seminoles, winners of four straight games, were led by senior Latavia Coleman, who scored 19 points and earned Most Valuable Player honors. FIU falls to 3-5 on the year.

The first 20 minutes was a battle. Florida State jumped to an early 7-2 advantage and led the Golden Panthers for much of the first half. The Seminoles' largest lead was 19-13 at the 9:00 mark, but FSU failed to score again until 5:38 left in the half. The Golden Panthers took advantage of the FSU scoring drought and took their first lead of the contest at 21-19 at the 6:20 mark. FIU went on to a seven point lead at 32-25 with 2:10 to go, but the Seminoles had a 9-2 run to close out the half as Shinikki Whiting went the length of the court and hit a jumper in the lane at the buzzer to tie the game at 34-34. Coleman led FSU with eight points while Levys Torres came in off the bench to spark the Seminole comeback with six points and a team-high four rebounds.

As with the St. John's contest, the Seminoles came out running and gunning to start the second half and scored the first 11 points to take a 45-34 advantage. FSU also played solid defense and held the Golden Panthers scoreless until the 13:56 mark when Anita Heller hit two free throws. FIU did not score a field goal until 11:22 left in the game as 13 of the Golden Panthers' 21 second-half points were from the free throw line. The Seminoles never let up and built its largest lead of 20 points at 66-46 with 4:56 to play. The Golden Panthers pulled to within eight points at 52-44 with 9:53 to play, but could get no closer the rest of the game.

Brooke Wyckoff, who earned All-Tournament Team honors, and Angela Sutton, each scored 15 points for the Tribe while Torres contributed 10 points and eight rebounds off the bench. April Traylor had a game-high eight assists and added eight points. FIU was led by Cheryl Moody's 11 points while Gergana Slavtcheva had a double-double with 10 points and a game-high 13 rebounds.

"We feel very proud to be able to come into Florida International's gym and win their tournament," FSU Head Coach Sue Semrau said. "FIU is a great team with a very rich basketball tradition. We knew it would take a total team effort and that's what we got. What we are seeing is a very unselfish style of play. I was very pleased with our defensive effort, especially in the second half, and our emphasis has been on that. I can't say enough about Latavia (Coleman) — the presence she brings to the court and not just her scoring, but her leadership and poise. I'm just really proud of all of them."

FSU's seven wins this season equals its total wins of all of last year. The Tribe will try to make it five in a row when the Seminoles open Atlantic Coast Conference play at Wake Forest on January 3rd at 7 p.m.

OFFICIAL BASKETBALL BOX SCORE -- G A M E T O T A L S
 Florida State vs Florida International
 12/30/99 7:00pm at Golden Panther Arena, Miami, Florida

VISITORS: Florida State 7-3

		TOT-FG		3-PT		REBOUNDS												
No.	N A M E	FG	FGA	FG	FGA	FT	FTA	OF	DE	TOT	PF	TP	A	TO	BLK	S	MIN	
21	WYCKOFF, Brooke	f	4	10	1	1	6	6	1	5	6	3	15	2	2	2	1	37
30	COLEMAN, Latavia	f	7	12	0	0	5	5	1	4	5	1	19	0	3	0	4	29
44	BRADLEY, Lauren	c	2	2	0	0	0	0	1	1	2	5	4	0	1	0	0	20
11	SUTTON, Angela	g	5	12	0	2	5	6	1	0	1	3	15	0	1	0	5	23
12	TRAYLOR, April	g	3	11	0	2	2	5	1	3	4	2	8	8	8	0	6	32
10	SPRINGLE, LaKeshia		0	0	0	0	0	0	0	1	1	4	0	0	1	0	1	12
13	TORRES, Levys		4	6	0	0	2	4	4	4	8	1	10	0	0	0	0	16
20	VUJAS, Katelyn		0	6	0	0	0	0	1	4	5	2	0	0	1	1	0	15
23	WHITING, Shinikki		1	4	0	0	3	4	0	1	1	0	5	0	1	0	0	9
32	BEAL, Molly		0	1	0	1	0	0	0	0	0	0	0	0	0	0	0	4
33	FUCHS, Vanessa		0	0	0	0	0	0	1	1	2	0	0	0	0	0	0	3
TEAM								1	2	3								
TOTALS			26	64	1	6	23	30	12	26	38	21	76	10	18	3	17	200

TOTAL FG% 1st Half: 13-31 .419 2nd Half: 13-33 .394 Game: .406 DEADBALL
 3-Pt. FG% 1st Half: 1- 2 .500 2nd Half: 0- 4 .000 Game: .167 REBOUNDS
 F Throw % 1st Half: 7-10 .700 2nd Half: 16-20 .800 Game: .767 2

HOME TEAM: Florida International 3-5

		TOT-FG		3-PT		REBOUNDS															
No.	N A M E	FG	FGA	FG	FGA	FT	FTA	OF	DE	TOT	PF	TP	A	TO	BLK	S	MIN				
11	SLAVTCHEVA, Gergana	f	3	13	1	4	3	4	4	9	13	4	10	4	5	2	3	40-			
55	MOODY, Cheryl	f	3	6	0	0	5	7	3	6	9	4	11	1	0	0	2	28			
44	NAGY, Viktoria	c	2	4	0	0	2	2	2	1	3	3	6	0	4	0	3	27			
15	CAMPS, Laura	g	4	8	0	0	0	0	1	2	3	5	8	1	5	0	3	29			
20	HELLER, Anita	g	1	8	0	2	8	9	0	1	1	4	10	1	10	0	1	39			
21	MESA, Silvia		0	2	0	0	0	2	0	4	4	2	0	0	0	0	0	10			
42	COTTON, Cormisha		2	6	0	0	3	6	2	3	5	2	7	0	2	0	0	19			
45	VRANCHEVA, Ivelina		1	3	1	2	0	0	0	0	0	2	3	1	1	0	2	8			
TEAM								1	5	6											
TOTALS			16	50	2	8	21	30	13	31	44	26	55	8	27	2	14	200			

TOTAL FG% 1st Half: 13-27 .481 2nd Half: 3-23 .130 Game: .320 DEADBALL
 3-Pt. FG% 1st Half: 0- 3 .000 2nd Half: 2- 5 .400 Game: .250 REBOUNDS
 F Throw % 1st Half: 8-16 .500 2nd Half: 13-14 .929 Game: .700 4

OFFICIALS: Art Bomengen, Rick Carter, Michele Eglinger

TECHNICAL FOULS:

Florida State - none
 Florida International - none

ATTENDANCE: 479

SCORE BY PERIODS:

	1st	2nd	OT1	OT2	OT3	OT4	TOTAL
Florida State	34	42					76
Florida International	34	21					55

17 Annual Sun & Fun Classic -- Championship

All Tournament Team: G. Bowles, St. John's; M. Eagles, Temple; G. Slavtcheva, FIU; V. Nagy, FIU; B. Wyckoff, FSU; MVP Latavia Coleman, FSU

HOME TEAM: Florida International

VISITORS: Florida State

TIME	SCORE	MAR	PLAY
19:36			missed 3-PNTR by TRAYLOR, Apri
REBOUND(DEF) by SLAVTCHEVA, G			
TURNOVER by SLAVTCHEVA, G			
19:09			
19:08			STEAL by SUTTON, Angel
19:03	0-2	V 2	made LAYUP by SUTTON, Angel
18:44	2-2	T 1	
made JUMPER by MOODY, Cheryl			
ASSIST by HELLER, Anita			
18:44			
18:32			TURNOVER by COLEMAN, Lata
STEAL by MOODY, Cheryl			
TURNOVER by CAMPS, Laura			
18:30			
18:26			
18:25			STEAL by COLEMAN, Lata
18:22	2-4	V 2	made LAYUP by SUTTON, Angel
18:01			
17:59			STEAL by TRAYLOR, Apri
17:54	2-7	V 5	made 3-PNTR by WYCKOFF, Broo
17:54			ASSIST by TRAYLOR, Apri
missed JUMPER by MOODY, Cheryl			
17:34			
17:34			REBOUND(DEF) by BRADLEY, Laur
17:17			missed JUMPER by WYCKOFF, Broo
REBOUND(DEF) by SLAVTCHEVA, G			
made JUMPER by MOODY, Cheryl			
ASSIST by SLAVTCHEVA, G			
FOUL on MOODY, Cheryl(P1T1)			
17:00	4-7	V 3	
17:00			
16:44			
16:44	4-8	V 4	made F THROW by COLEMAN, Lata
16:44	4-9	V 5	made F THROW by COLEMAN, Lata
TURNOVER by HELLER, Anita			
16:38			
16:37			STEAL by SUTTON, Angel
16:34			TURNOVER by TRAYLOR, Apri
16:16			FOUL on COLEMAN, Lata(P1T1)
made F THROW by NAGY, Viktori			
made F THROW by NAGY, Viktori			
16:16	5-9	V 4	
16:16	6-9	V 3	
15:54			missed JUMPER by WYCKOFF, Broo
15:54			REBOUND(OFF) by COLEMAN, Lata
FOUL on MOODY, Cheryl(P2T2)			
15:52			
15:52			--- MEDIA TIMEOUT ---
15:48	6-11	V 5	made JUMPER by BRADLEY, Laur
15:48			ASSIST by WYCKOFF, Broo
missed JUMPER by SLAVTCHEVA, G			
15:29			
15:29			REBOUND(DEF) by WYCKOFF, Broo
15:04			TURNOVER by SPRINGLE, LaK
STEAL by NAGY, Viktori			
TURNOVER by COTTON, Cormi			
14:55			
14:37			missed JUMPER by COLEMAN, Lata
REBOUND(DEF) by COTTON, Cormi			
14:37			
14:20			FOUL on BRADLEY, Laur(P1T2)
missd F THROW by COTTON, Cormi			
missd F THROW by COTTON, Cormi			
14:20			
14:20			REBOUND(DEF) by WYCKOFF, Broo
13:57			TURNOVER by VUJAS, Kately
TURNOVER by COTTON, Cormi			
13:45			
13:44			STEAL by SPRINGLE, LaK
13:36			missed JUMPER by VUJAS, Kately
REBOUND(DEF) by SLAVTCHEVA, G			
TURNOVER by HELLER, Anita			
13:36			
13:27			STEAL by TRAYLOR, Apri
13:27			
FOUL on CAMPS, Laura (P1T3)			
13:16			

	13:02			missed JUMPER by WYCKOFF, Broo
	13:02			REBOUND(OFF) by FUCHS, Vaness
	12:56			missed JUMPER by VUJAS, Kately
BLOCKED by SLAVTCHEVA, G	12:56			
REBOUND(DEF) by SLAVTCHEVA, G	12:53			
missed JUMPER by SLAVTCHEVA, G	12:30			
	12:30			REBOUND(DEF) by WYCKOFF, Broo
FOUL on HELLER, Anita(P1T4)	12:23			
--- TIMEOUT # 1 ---	12:23			
	12:23	6-12	V 6	made F THROW by WHITING, Shin
	12:15	6-13	V 7	made F THROW by WHITING, Shin
made JUMPER by NAGY, Viktori	12:06	8-13	V 5	
	11:56			missed JUMPER by SUTTON, Angel
REBOUND(DEF) by COTTON, Cormi	11:56			
missed JUMPER by COTTON, Cormi	11:47			
REBOUND(OFF) by NAGY, Viktori	11:47			
missed JUMPER by CAMPS, Laura	11:34			
REBOUND(OFF) by CAMPS, Laura	11:34			
made LAYUP by CAMPS, Laura	11:30	10-13	V 3	
	11:19			missed JUMPER by WHITING, Shin
REBOUND(DEF) by NAGY, Viktori	11:19			
--- MEDIA TIMEOUT ---	11:11			
made JUMPER by NAGY, Viktori	11:01	12-13	V 1	
ASSIST by SLAVTCHEVA, G	11:01			
	10:32	12-15	V 3	made LAYUP by COLEMAN, Lata
	10:32			ASSIST by TRAYLOR, Apri
	10:13			FOUL on SPRINGLE, LaK(P1T3)
missd F THROW by COTTON, Cormi	10:13			
made F THROW by COTTON, Cormi	10:13	13-15	V 2	
	10:03	13-17	V 4	made LAYUP by TRAYLOR, Apri
missed 3-PNTR by SLAVTCHEVA, G	09:48			
	09:48			REBOUND(DEF) by WHITING, Shin
	09:40			missed JUMPER by WHITING, Shin
	09:40			REBOUND(OFF) by BRADLEY, Laur
	09:35			missed JUMPER by COLEMAN, Lata
REBOUND(DEF) by SLAVTCHEVA, G	09:35			
	09:28			FOUL on TRAYLOR, Apri(P1T4)
missed JUMPER by HELLER, Anita	09:13			
	09:13			REBOUND(DEF) by TRAYLOR, Apri
	09:01	13-19	V 6	made JUMPER by BRADLEY, Laur
made JUMPER by COTTON, Cormi	08:42	15-19	V 4	
ASSIST by CAMPS, Laura	08:42			
	08:29			TURNOVER by WHITING, Shin
STEAL by SLAVTCHEVA, G	08:28			
missed JUMPER by HELLER, Anita	08:10			
	08:10			REBOUND(DEF) by VUJAS, Kately
	07:50			missed JUMPER by VUJAS, Kately
REBOUND(DEF) by COTTON, Cormi	07:50			
made JUMPER by COTTON, Cormi	07:28	17-19	V 2	
ASSIST by SLAVTCHEVA, G	07:28			
	07:24			--- 20sec TIMEOUT ---
	07:14			TURNOVER by WYCKOFF, Broo
STEAL by CAMPS, Laura	07:13			
	06:46			FOUL on TRAYLOR, Apri(P2T5)
--- MEDIA TIMEOUT ---	06:46			
	06:40			FOUL on BRADLEY, Laur(P2T6)
missd F THROW by MESA, Silvia	06:40			
missd F THROW by MESA, Silvia	06:40			
REBOUND(OFF) by SLAVTCHEVA, G	06:40			
made LAYUP by SLAVTCHEVA, G	06:40	19-19	T 2	

STEAL by CAMPS, Laura	06:33			06:33	TURNOVER by TRAYLOR, Apri
made LAYUP by CAMPS, Laura	06:32			06:32	
REBOUND(DEF) by MESA, Silvia	06:29	21-19	H 2	06:29	missed JUMPER by TRAYLOR, Apri
	06:02			06:02	
made F THROW by HELLER, Anita	06:02			05:56	FOUL on SUTTON, Angel(P1T7)
made F THROW by HELLER, Anita	05:56	22-19	H 3	05:56	
	05:56	23-19	H 4	05:56	
missed JUMPER by SLAVTCHEVA, G	05:38	23-21	H 2	05:38	made JUMPER by TRAYLOR, Apri
REBOUND(OFF) by SLAVTCHEVA, G	05:30			05:30	
missed 3-PNTR by HELLER, Anita	05:30			05:30	
made LAYUP by CAMPS, Laura	05:17			05:17	
ASSIST by SLAVTCHEVA, G	05:13	25-21	H 4	05:13	
	05:13			05:13	
REBOUND(DEF) by MOODY, Cheryl	05:00			05:00	missed JUMPER by COLEMAN, Lata
made JUMPER by HELLER, Anita	05:00			05:00	
	04:53	27-21	H 6	04:53	
missed JUMPER by MESA, Silvia	04:30	27-23	H 4	04:30	made JUMPER by COLEMAN, Lata
REBOUND(OFF) by MOODY, Cheryl	04:30			04:30	ASSIST by WYCKOFF, Broo
made JUMPER by MOODY, Cheryl	04:10			04:10	
	04:10			04:10	
made F THROW by MOODY, Cheryl	04:06	29-23	H 6	04:06	FOUL on BRADLEY, Laur(P3T8)
---	04:06			04:06	
MEDIA TIMEOUT ---	04:06	30-23	H 7	04:06	
	03:57			03:57	
STEAL by SLAVTCHEVA, G	03:50			03:50	TURNOVER by WYCKOFF, Broo
missed LAYUP by SLAVTCHEVA, G	03:49			03:49	
	03:46			03:46	
REBOUND(DEF) by MESA, Silvia	03:46			03:46	REBOUND(DEF) by FUCHS, Vaness
missed 3-PNTR by SLAVTCHEVA, G	03:29			03:29	missed JUMPER by TORRES, Levys
	03:29			03:29	
REBOUND(DEF) by MESA, Silvia	03:16			03:16	REBOUND(DEF) by COLEMAN, Lata
missed 3-PNTR by SLAVTCHEVA, G	03:16			03:16	missed JUMPER by WYCKOFF, Broo
	02:55			02:55	
REBOUND(DEF) by MESA, Silvia	02:55			02:55	
TURNOVER by CAMPS, Laura	02:49			02:49	
	02:35	30-25	H 5	02:35	made JUMPER by COLEMAN, Lata
made LAYUP by CAMPS, Laura	02:10	32-25	H 7	02:10	
FOUL on SLAVTCHEVA, G(P1T5)	01:53			01:53	
	01:53	32-26	H 6	01:53	made F THROW by WHITING, Shin
	01:53			01:53	missd F THROW by WHITING, Shin
	01:53			01:53	REBOUND(OFF) by TORRES, Levys
FOUL on MESA, Silvia (P1T6)	01:49			01:49	
	01:49	32-27	H 5	01:49	made F THROW by TORRES, Levys
	01:49	32-28	H 4	01:49	made F THROW by TORRES, Levys
	01:36			01:36	FOUL on SPRINGLE, LaK(P2T9)
missd F THROW by HELLER, Anita	01:36			01:36	
	01:36			01:36	REBOUND(DEF) by SPRINGLE, LaK
FOUL on MESA, Silvia (P2T7)	01:34			01:34	
	01:34			01:34	missd F THROW by TORRES, Levys
missed JUMPER by NAGY, Viktori	01:23			01:23	
	01:23			01:23	REBOUND(DEF) by COLEMAN, Lata
	01:02			01:02	missed JUMPER by WYCKOFF, Broo
	01:02			01:02	REBOUND(OFF) by TORRES, Levys
	00:57	32-30	H 2	00:57	made LAYUP by TORRES, Levys
	00:38			00:38	FOUL on TORRES, Levys(P1T10)
missd F THROW by MOODY, Cheryl	00:38			00:38	
missd F THROW by MOODY, Cheryl	00:38			00:38	
	00:38			00:38	REBOUND(DEF) by TORRES, Levys
	00:11			00:11	missed JUMPER by WHITING, Shin

OFFICIAL BASKETBALL BOX SCORE -- F I R S T H A L F -- END OF PERIOD 1
 Florida State vs Florida International
 12/30/99 7:00pm at Golden Panther Arena, Miami, Florida

VISITORS: Florida State

No.	N A M E	TOT-FG		3-PT		FT	FTA	REBOUNDS			PF	TP	A	TO	BLK	S	MIN
		FG	FGA	FG	FGA			OF	DE	TOT							
21	WYCKOFF, Brooke	f	1	6	1	1	0	0	0	3	3	0	3	2	2	0	18
30	COLEMAN, Latavia	f	3	6	0	0	2	2	1	2	3	1	8	0	1	0	16
44	BRADLEY, Lauren	c	2	2	0	0	0	0	1	1	2	3	4	0	0	0	14
11	SUTTON, Angela	g	2	3	0	0	0	0	0	0	0	1	4	0	0	2	7
12	TRAYLOR, April	g	2	4	0	1	0	0	0	1	1	2	4	2	2	0	14
10	SPRINGLE, LaKeshia		0	0	0	0	0	0	0	1	1	3	0	0	1	0	10
13	TORRES, Levys		2	3	0	0	2	4	3	1	4	1	6	0	0	0	4
20	VUJAS, Katelyn		0	3	0	0	0	0	0	1	1	0	0	0	1	0	6
23	WHITING, Shinikki		1	4	0	0	3	4	0	1	1	0	5	0	1	0	9
33	FUCHS, Vanessa		0	0	0	0	0	0	1	1	2	0	0	0	0	0	2
TEAM										0	0						
TOTALS			13	31	1	2	7	10	6	12	18	11	34	4	8	0	100

TOTAL FG% 1st Half: 13-31 .419 2nd Half: 0-0 .000 Game: .419 DEADBALL
 3-Pt. FG% 1st Half: 1-2 .500 2nd Half: 0-0 .000 Game: .500 REBOUNDS
 F Throw % 1st Half: 7-10 .700 2nd Half: 0-0 .000 Game: .700 0

HOME TEAM: Florida International

No.	N A M E	TOT-FG		3-PT		FT	FTA	REBOUNDS			PF	TP	A	TO	BLK	S	MIN
		FG	FGA	FG	FGA			OF	DE	TOT							
1	SLAVTCHEVA, Gergana	f	1	7	0	2	0	0	2	6	8	1	2	4	1	1	20
5	MOODY, Cheryl	f	3	4	0	0	1	3	1	1	2	2	7	0	0	0	11
44	NAGY, Viktoria	c	2	3	0	0	2	2	1	1	2	0	6	0	0	0	15
15	CAMPS, Laura	g	4	5	0	0	0	0	1	0	1	2	8	1	3	0	20
20	HELLER, Anita	g	1	4	0	1	4	5	0	0	0	1	6	1	2	0	20
21	MESA, Silvia		0	1	0	0	0	2	0	3	3	2	0	0	0	0	6
42	COTTON, Cormisha		2	3	0	0	1	4	0	3	3	0	5	0	2	0	8
TEAM									1	1	2						
TOTALS			13	27	0	3	8	16	6	15	21	8	34	6	8	1	100

TOTAL FG% 1st Half: 13-27 .481 2nd Half: 0-0 .000 Game: .481 DEADBALL
 3-Pt. FG% 1st Half: 0-3 .000 2nd Half: 0-0 .000 Game: .000 REBOUNDS
 F Throw % 1st Half: 8-16 .500 2nd Half: 0-0 .000 Game: .500 4

OFFICIALS: Art Bomengen, Rick Carter, Michele Eglinger

TECHNICAL FOULS:

Florida State - none
 Florida International - none

ATTENDANCE:

SCORE BY PERIODS: 1st 2nd OT1 OT2 OT3 OT4 TOTAL
 Florida State 34 34
 Florida International 34 34

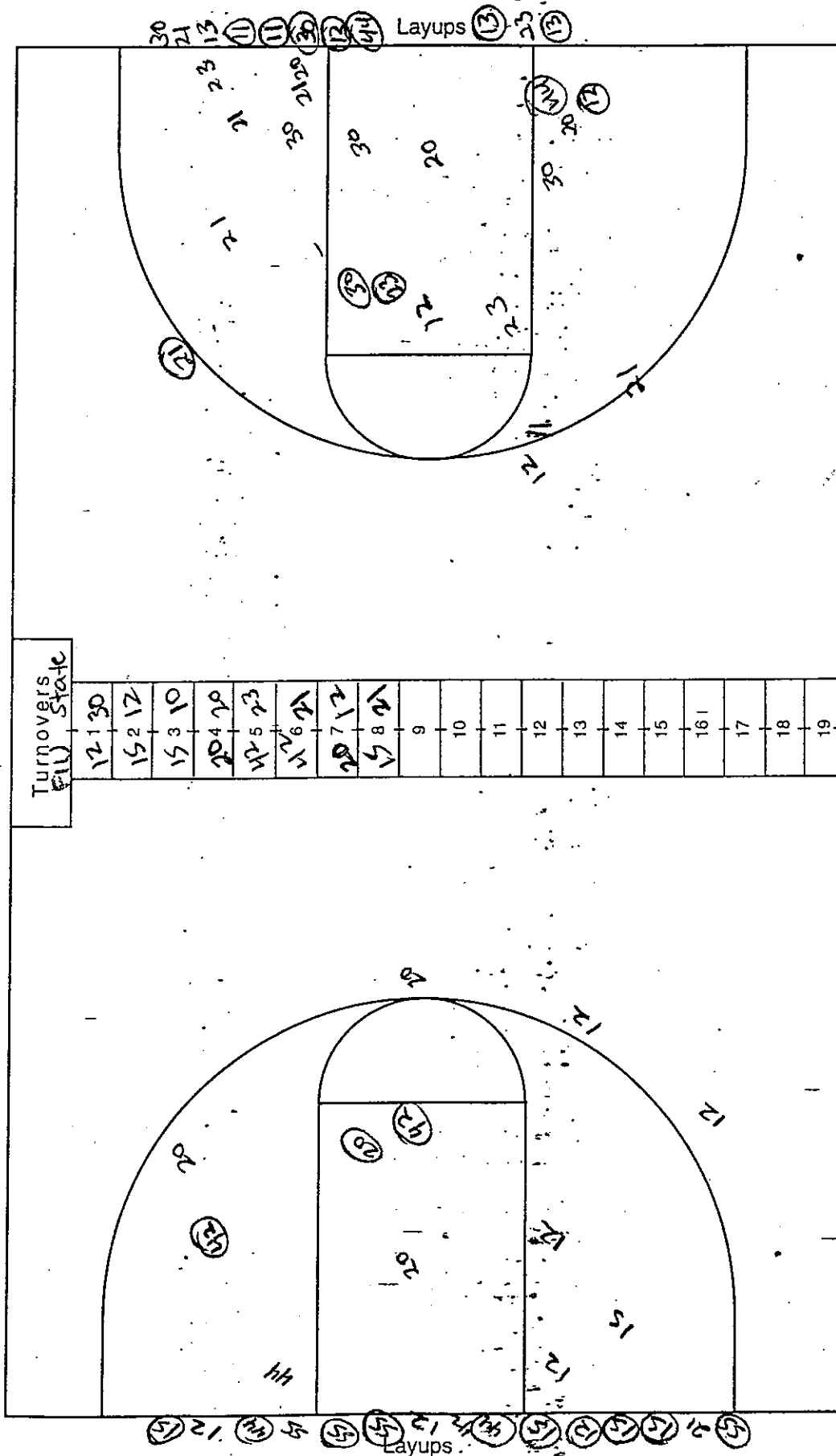
15th Annual Sun & Fun Classic -- Championship
 All-Tournament Team:--

NCAA BASKETBALL SHOT CHART

First Half

Second Half

(Circle one)



Attempted _____
 Made _____
 Percentage _____

Attempted _____
 Made _____
 Percentage _____

Visitor Team **F.S.U.**
 Coach **Ward**

Home Team **F.I.U.**
 Coach **White**

Florida State at Florida International				12/30/99 7:00pm	PAGE 001
HOME TEAM: Florida International	TIME	SCORE	B Y	P L A Y VISITORS: Florida State	
REBOUND(DEF) by MOODY, Cheryl	19:40				
	19:26				
	19:10				
TURNOVER by SLAVTCHEVA, G	19:07	34-36	V 2	REBOUND(DEF) by TORRES, Levys	
	18:45			REBOUND(OFF) by TORRES, Levys	
REBOUND(OFF) by MOODY, Cheryl	18:42			made LAYUP by TORRES, Levys	
FOUL on CAMPS, Laura (P3T1)	18:37	34-38	V 4	REBOUND(OFF) by WYCKOFF, Broo	
	18:15			made JUMPER by WYCKOFF, Broo	
TURNOVER by HELLER, Anita	18:09			BLOCKED by WYCKOFF, Broo	
REBOUND(DEF) by SLAVTCHEVA, G	18:02	34-39	V 5	made F THROW by SUTTON, Angel	
TURNOVER by SLAVTCHEVA, G	18:02	34-40	V 6	made F THROW by SUTTON, Angel	
FOUL on SLAVTCHEVA, G(P2T2)	17:43			STEAL by COLEMAN, Lata	
REBOUND(DEF) by CAMPS, Laura	17:41				
REBOUND(DEF) by MOODY, Cheryl	17:35			STEAL by SUTTON, Angel	
REBOUND(OFF) by COTTON, Cormi	17:32			---	20sec TIMEOUT ---
FOUL on HELLER, Anita(P2T3)	17:32			REBOUND(DEF) by TORRES, Levys	
	17:32			FOUL on SUTTON, Angel(P2T1)	
TURNOVER by HELLER, Anita	17:14			REBOUND(DEF) by WYCKOFF, Broo	
FOUL on COTTON, Cormi(P1T4)	17:08			made JUMPER by TORRES, Levys	
---	17:04			ASSIST by TRAYLOR, Apri	
20sec TIMEOUT ---	16:43	34-42	V 8	made JUMPER by WYCKOFF, Broo	
	16:33			made JUMPER by WYCKOFF, Broo	
	16:30			made F THROW by WYCKOFF, Broo	
	16:21	34-44	V10	---	MEDIA TIMEOUT ---
	16:19			REBOUND(DEF) by VUJAS, Kately	
	16:19			TURNOVER by TRAYLOR, Apri	
	16:04			STEAL by WYCKOFF, Broo	
	16:04				
	15:57			TURNOVER by BRADLEY, Laur	
	15:51	34-45	V11	FOUL on VUJAS, Kately(P1T2)	
	15:51				
	15:30				
	15:28				
	14:49	35-45	V10		
	14:38	36-45	V 9		
	14:36				
	14:32				
	14:31				
	14:26	36-46	V10		
	14:21				
	14:02				
	14:02	36-48	V12		
	14:02				
	13:57				
	13:57				
	13:57				
	13:36				
	13:36	36-46	V10		
	13:36				
	13:16				
	13:07				
	12:51	36-48	V12		
	12:36				
	12:36				
	12:36	36-49	V13		
	12:36	36-50	V14		
	12:26				
	12:22	37-50	V13		
	12:22				
	12:22	38-50	V12		
	12:12				
	11:56				
	11:47	38-52	V14		
	11:47				
	11:36	40-52	V12		
	11:02				
	11:00				
	11:00				
	10:45				
	10:45				
	10:26				
	10:24				
	10:21				

made F THROW by HELLER, Anita	10:21	41-52	V11	
made F THROW by HELLER, Anita	10:21	42-52	V10	
REBOUND(DEF) by MOODY, Cheryl	09:55			
	09:53			FOUL on BRADLEY, Laur(P4T7)
m F THROW by MOODY, Cheryl	09:53	43-52	V 9	
m F THROW by MOODY, Cheryl	09:53	44-52	V 8	
REBOUND(DEF) by HELLER, Anita	09:41			
TURNOVER by HELLER, Anita	09:35			
	09:26			REBOUND(OFF) by SUTTON, Angel
REBOUND(DEF) by MESA, Silvia	09:21			
TURNOVER by HELLER, Anita	09:14			STEAL by TRAYLOR, Apri
	09:13			
FOUL on MOODY, Cheryl(P4T10)	09:09			
	09:09	44-53	V 9	made F THROW by WYCKOFF, Broo
FOUL on COTTON, Cormi(P2T11)	08:50	44-55	V11	made LAYUP by TRAYLOR, Apri
--- 20sec TIMEOUT ---	08:50			
	08:50			
TURNOVER by NAGY, Viktori	08:46	44-56	V12	made F THROW by TRAYLOR, Apri
	08:29			STEAL by TRAYLOR, Apri
	08:26			TURNOVER by TRAYLOR, Apri
STEAL by NAGY, Viktori	08:26			
REBOUND(OFF) by COTTON, Cormi	08:24			
	08:20			FOUL on SUTTON, Angel(P3T8)
made F THROW by COTTON, Cormi	08:20	45-56	V11	
made F THROW by COTTON, Cormi	08:20	46-56	V10	
FOUL on SLAVTCHEVA, G(P3T12)	08:01			
	07:59			missd F THROW by TRAYLOR, Apri
	07:59			missd F THROW by TRAYLOR, Apri
REBOUND(DEF) by MOODY, Cheryl	07:59			
TURNOVER by HELLER, Anita	07:51			
	07:51			--- MEDIA TIMEOUT ---
	07:33			TURNOVER by TRAYLOR, Apri
REBOUND(OFF) by SLAVTCHEVA, G	07:21			
TURNOVER by SLAVTCHEVA, G	07:19			
	07:19			STEAL by COLEMAN, Lata
REBOUND(DEF) by SLAVTCHEVA, G	07:00			
	06:46			REBOUND(DEF) by TRAYLOR, Apri
	06:37	46-58	V12	made LAYUP by COLEMAN, Lata
	06:37			ASSIST by TRAYLOR, Apri
TURNOVER by SLAVTCHEVA, G	06:17			
	06:16			STEAL by SUTTON, Angel
	06:15	46-60	V14	made LAYUP by COLEMAN, Lata
	06:15			ASSIST by TRAYLOR, Apri
	06:02			BLOCKED by VUJAS, Kately
REBOUND(OFF) by MOODY, Cheryl	05:59			
	05:56			REBOUND(DEF) by TRAYLOR, Apri
	05:49	46-62	V16	made JUMPER by SUTTON, Angel
	05:49			ASSIST by TRAYLOR, Apri
FOUL on HELLER, Anita(P4T13)	05:49			
--- 20sec TIMEOUT ---	05:49			
TURNOVER by NAGY, Viktori	05:49	46-63	V17	made F THROW by SUTTON, Angel
	05:33			STEAL by COLEMAN, Lata
	05:32			REBOUND(OFF) by VUJAS, Kately
REBOUND(DEF) by MOODY, Cheryl	05:25			
	05:21			BLOCKED by WYCKOFF, Broo
REBOUND(OFF) by NAGY, Viktori	05:12			
	05:11			REBOUND(DEF) by VUJAS, Kately
	05:07			made JUMPER by COLEMAN, Lata
FOUL on NAGY, Viktori(P2T14)	04:53	46-65	V19	
	04:53			
TURNOVER by VRANCHEVA, Iv	04:53	46-66	V20	made F THROW by COLEMAN, Lata
	04:46			STEAL by TRAYLOR, Apri
	04:45			TURNOVER by TRAYLOR, Apri
	04:43			
STEAL by VRANCHEVA, Iv	04:42			
made 3-PNTR by VRANCHEVA, Iv	04:39	49-66	V17	
ASSIST by MOODY, Cheryl	04:39			
	04:19			FOUL on WYCKOFF, Broo(P3T9)
made F THROW by MOODY, Cheryl	04:19	50-66	V16	
made F THROW by MOODY, Cheryl	04:19	51-66	V15	
	04:04			TURNOVER by TRAYLOR, Apri
STEAL by MOODY, Cheryl	04:03			
	03:52			FOUL on BRADLEY, Laur(P5T10)
made F THROW by SLAVTCHEVA, G	03:52	52-66	V14	
missd F THROW by SLAVTCHEVA, G	03:52			
	03:52			REBOUND(DEF) by COLEMAN, Lata
	03:24			--- MEDIA TIMEOUT ---
FOUL on VRANCHEVA, Iv(P1T15)	03:19			
	03:19	52-67	V15	made F THROW by TRAYLOR, Apri

FOUL on NAGY, Viktori(P3T16)	03:19			missd F THROW by TRAYLOR, Apri
	03:06			REBOUND(DEF) by WYCKOFF, Broo
	03:03			
	03:03	52-68	V16	made F THROW by WYCKOFF, Broo
m 3-PNTR by SLAVTCHEVA, G	03:03	52-69	V17	made F THROW by WYCKOFF, Broo
ASSIST by VRANCHEVA, Iv	02:53	55-69	V14	
	02:53			
	02:41			--- 20sec TIMEOUT ---
---	02:23			TURNOVER by SUTTON, Angel
20sec TIMEOUT ---	02:02			
	01:44			TURNOVER by COLEMAN, Lata
STEAL by VRANCHEVA, Iv	01:42			
TURNOVER by NAGY, Viktori	01:39			
	01:37			STEAL by SUTTON, Angel
	01:36	55-71	V16	made LAYUP by SUTTON, Angel
FOUL on NAGY, Viktori(P4T17)	01:36			
	01:36			---
	01:36	55-72	V17	20sec TIMEOUT ---
TURNOVER by HELLER, Anita	01:31			made F THROW by SUTTON, Angel
	01:30			
FOUL on SLAVTCHEVA, G(P4T18)	01:23			STEAL by TRAYLOR, Apri
	01:23	55-73	V18	made F THROW by WYCKOFF, Broo
	01:23	55-74	V19	made F THROW by WYCKOFF, Broo
	01:21			REBOUND(DEF) by TORRES, Levys
	01:13	55-76	V21	made LAYUP by SUTTON, Angel
	01:13			ASSIST by TRAYLOR, Apri
	01:03			REBOUND(DEF) by VUJAS, Kately
	00:48			---
	00:35			20sec TIMEOUT ---
				REBOUND(OFF) by TRAYLOR, Apri
SCORE: Florida International		55	Florida State	76

NCAA® BASKETBALL SHOT CHART

First Half

Second Half

(Circle one)

45 20 42 44 15 Layups 15 42 12

The diagram shows a basketball court with a key and three-point arc. Handwritten numbers and symbols are scattered across the court, including "12", "11", "10", "9", "8", "7", "6", "5", "4", "3", "2", "1", "0", "12", "11", "10", "9", "8", "7", "6", "5", "4", "3", "2", "1", "0", "12", "11", "10", "9", "8", "7", "6", "5", "4", "3", "2", "1", "0".

Turnovers	State	Fouls
1	2	12
2	3	11
3	4	10
4	5	9
5	6	8
6	7	7
7	8	6
8	9	5
9	10	4
10	11	3
11	12	2
12	13	1
13	14	0
14	15	12
15	16	11
16	17	10
17	18	9
18	19	8
19	20	7

Attempted_____

Made _____

Percentage_____

Attempted_____

Made _____

Percentage_____