

OFFICIAL BASKETBALL BOX SCORE -- G A M E T O T A L S
 Florida State vs GEORGIA TECH
 1/5/00 7:34 p.m. at Alexander Memorial Coliseum

VISITORS: Florida State 10-2 (2-0 ACC)

No.	N A M E	TOT-FG		3-PT		FT	FTA	REBOUNDS			PF	TP	A	TO	BLK	S	MIN
		FG	FGA	FG	FGA			OF	DE	TOT							
20	VUJAS, Katelyn	f	7	11	0	0	0	1	2	3	5	1	14	1	3	1	26
21	WYCKOFF, Brooke	f	6	15	0	1	2	2	4	6	10	4	14	0	2	1	35
13	TORRES, Levys	c	2	5	0	0	2	2	2	7	9	4	6	2	3	0	22
10	SPRINGLE, Lakesha	g	0	2	0	0	2	2	2	3	5	1	2	3	0	0	33
12	TRAYLOR, April	g	6	15	1	5	6	9	5	1	6	3	19	4	1	2	32
03	WHITING, Shinikki		4	8	0	2	2	3	0	3	3	1	10	1	2	0	17
04	HOFMANN, Petra		0	0	0	0	0	0	0	2	2	0	0	0	1	0	7
22	FUCHS, Vanessa		0	1	0	1	0	0	0	0	0	0	0	0	1	0	5
25	BROWN, Lako		0	1	0	0	1	2	0	0	0	1	1	0	2	0	15
32	BEAL, Molly		0	0	0	0	0	0	0	2	2	0	0	0	1	0	8
TEAM									0	2	2						
TOTALS			25	58	1	9	15	21	15	29	44	15	66	11	16	4	200

TOTAL FG% 1st Half: 14-31 .452 2nd Half: 11-27 .407 Game: .431 DEADBALL
 3-Pt. FG% 1st Half: 1-6 .167 2nd Half: 0-3 .000 Game: .111 REBOUNDS
 F Throw % 1st Half: 6-8 .750 2nd Half: 9-13 .692 Game: .714 2, 1

HOME TEAM: GEORGIA TECH 9-4 (1-2 ACC)

No.	N A M E	TOT-FG		3-PT		FT	FTA	REBOUNDS			PF	TP	A	TO	BLK	S	MIN
		FG	FGA	FG	FGA			OF	DE	TOT							
32	KRUPPA, Jaime	f	4	11	0	0	0	0	2	3	5	2	8	2	1	1	24
33	MALLORY, Sonja	c	6	10	0	0	1	3	4	3	7	1	13	0	0	0	33
02	BARLIN, Nina	g	1	4	0	2	0	0	0	1	1	2	2	6	4	1	25
1	BUTLER, Niesha	g	4	16	0	3	3	4	0	2	2	4	11	2	1	1	31
31	MARTINEZ, Milli	g	6	15	2	4	2	2	6	3	9	2	16	1	2	0	38
04	STEWART, Alex		4	8	1	1	2	2	1	2	3	4	11	2	0	0	19
20	BOATNER, Tamika		1	5	0	0	0	0	1	4	5	4	2	0	3	0	14
24	STOKES, Fallon		1	4	0	0	0	0	1	2	3	2	2	2	0	0	16
TEAM									2	1	3				1		
TOTALS			27	73	3	10	8	11	17	21	38	21	65	15	12	3	200

TOTAL FG% 1st Half: 15-38 .395 2nd Half: 12-35 .343 Game: .370 DEADBALL
 3-Pt. FG% 1st Half: 0-4 .000 2nd Half: 3-6 .500 Game: .300 REBOUNDS
 F Throw % 1st Half: 5-7 .714 2nd Half: 3-4 .750 Game: .727 2, 1

OFFICIALS: Patty Broderick, Lisa Mattingly, Susan Barget

TECHNICAL FOULS:

Florida State - none

GEORGIA TECH - none

ATTENDANCE: 1452

SCORE BY PERIODS:

	1st	2nd	OT1	OT2	OT3	OT4	TOTAL
Florida State	35	31					66
GEORGIA TECH	35	30					65

HOME TEAM: GEORGIA TECH	TIME	SCORE	1/5/00 B Y MAR	7:34 p.m. VISITORS: Florida State	PAGE 001
TURNOVER by BARLIN, Nina	19:48	0-2	V 2	made LAYUP by VUJAS, Kately	
TURNOVER by MARTINEZ, Mil	19:36				
FOUL on KRUPPA, Jaime(P1T1)	19:05				
made LAYUP by KRUPPA, Jaime	18:46			missd F THROW by TRAYLOR, Apri	
ASSIST by BARLIN, Nina	18:46	0-3	V 3	made F THROW by TRAYLOR, Apri	
	18:27	2-3	V 1		
	18:27			TURNOVER by TORRES, Levys	
	18:10			TURNOVER by WYCKOFF, Broo	
FOUL on BUTLER, Niesh(P1T2)	17:51				
made LAYUP by KRUPPA, Jaime	17:29				
ASSIST by BARLIN, Nina	16:57	4-3	H 1		
	16:57				
	16:44	4-5	V 1	made JUMPER by VUJAS, Kately	
	16:22	4-7	V 3	made JUMPER by VUJAS, Kately	
made LAYUP by MALLORY, Sonj	16:22			ASSIST by SPRINGLE, Lak	
ASSIST by BARLIN, Nina	16:08	6-7	V 1		
	16:08				
missd F THROW by MALLORY, Sonj	16:07			FOUL on TORRES, Levys(P1T1)	
	16:07				
---	15:59	6-10	V 4	made 3-PNTR by TRAYLOR, Apri	
MEDIA TIMEOUT ---	15:59			ASSIST by TORRES, Levys	
made LAYUP by BARLIN, Nina	15:44				
	15:39	8-10	V 2		
	14:29	8-12	V 4	made JUMPER by TRAYLOR, Apri	
FOUL on BARLIN, Nina (P1T3)	14:29			ASSIST by WHITING, Shin	
	14:13				
	13:59	8-14	V 6	made LAYUP by WYCKOFF, Broo	
TURNOVER by BUTLER, Niesh	13:59			ASSIST by TRAYLOR, Apri	
	13:38				
	13:36			STEAL by SPRINGLE, Lak	
	13:21	8-16	V 8	made JUMPER by TORRES, Levys	
	13:21			ASSIST by TRAYLOR, Apri	
---	13:19				
20sec TIMEOUT ---	12:46				
TEAM TURNOVER	12:28				
FOUL on BUTLER, Niesh(P2T4)	12:15	8-18	V10	made LAYUP by WHITING, Shin	
	11:50	10-18	V 8		
made JUMPER by BUTLER, Niesh	11:50				
ASSIST by KRUPPA, Jaime	11:27			TURNOVER by VUJAS, Kately	
	11:19			FOUL on TORRES, Levys(P2T2)	
---	11:19				
MEDIA TIMEOUT ---	11:01				
FOUL on BOATNER, Tami(P1T5)	10:48				
FOUL on BOATNER, Tami(P2T6)	10:38	10-20	V10	made LAYUP by VUJAS, Kately	
	10:06	10-22	V12	made LAYUP by VUJAS, Kately	
---	10:01				
20sec TIMEOUT ---	09:30			TURNOVER by FUCHS, Vaness	
STEAL by MARTINEZ, Mil	09:29				
made JUMPER by KRUPPA, Jaime	09:13	12-22	V10		
ASSIST by MARTINEZ, Mil	09:13				
FOUL on KRUPPA, Jaime(P2T7)	08:31				
	08:31	12-23	V11	made F THROW by WHITING, Shin	
	08:31	12-24	V12	made F THROW by WHITING, Shin	
made JUMPER by BUTLER, Niesh	08:19	14-24	V10		
ASSIST by STOKES, Fallo	08:19				
	07:47			---	
	07:36			MEDIA TIMEOUT ---	
	07:17			FOUL on TRAYLOR, Apri(P1T3)	
FOUL on STOKES, Fallo(P1T8)	07:00			---	
	07:00	14-25	V11	20sec TIMEOUT ---	
	07:00	14-26	V12	made F THROW by SPRINGLE, Lak	
made LAYUP by MALLORY, Sonj	06:46	16-26	V10	made F THROW by SPRINGLE, Lak	
	06:30			TURNOVER by BEAL, Molly	
STEAL by BUTLER, Niesh	06:28				
TURNOVER by BARLIN, Nina	06:11				
	05:57	16-28	V12	made LAYUP by WYCKOFF, Broo	
	05:57			ASSIST by TRAYLOR, Apri	
	05:36			TURNOVER by WHITING, Shin	
	05:12			FOUL on TRAYLOR, Apri(P2T4)	
made LAYUP by MARTINEZ, Mil	05:02	18-28	V10		
TURNOVER by MARTINEZ, Mil	04:52				
	04:49			TURNOVER by VUJAS, Kately	
made JUMPER by MALLORY, Sonj	04:33	20-28	V 8		
	04:32			FOUL on VUJAS, Kately(P1T5)	
missd F THROW by MALLORY, Sonj	04:32				
	04:31			FOUL on WYCKOFF, Broo(P1T6)	
	04:21			---	
made LAYUP by MALLORY, Sonj	03:47	22-28	V 6	20sec TIMEOUT ---	

made F THROW by BUTLER, Niesh	03:22			FOUL on WYCKOFF, Broo(P2T7)
made F THROW by BUTLER, Niesh	03:22	23-28	V 5	
--- MEDIA TIMEOUT ---	03:22	24-28	V 4	
TURNOVER by BARLIN, Nina	03:10			
	03:00			STEAL by TRAYLOR, Apri
made JUMPER by STOKES, Fallo	02:58	24-30	V 6	made JUMPER(90P)-TRAYLOR, Apr
ASSIST by BARLIN, Nina	02:36	26-30	V 4	
	02:36			
	02:17	26-32	V 6	made JUMPER by VUJAS, Kately
	01:51	26-34	V 8	made JUMPER by VUJAS, Kately
--- 20sec TIMEOUT ---	01:51			ASSIST by SPRINGLE, Lak
made LAYUP by MALLORY, Sonj	01:48			
	01:31	28-34	V 6	
made F THROW by MALLORY, Sonj	01:31			FOUL on SPRINGLE, Lak(P1T8)
FOUL on MALLORY, Sonj(P1T9)	01:31	29-34	V 5	
	01:19			
	01:19	29-35	V 6	made F THROW by BROWN, Lako
	01:19			missd F THROW by BROWN, Lako
made F THROW by STEWART, Alex	00:53			FOUL on WHITING, Shin(P1T9)
made F THROW by STEWART, Alex	00:53	30-35	V 5	
	00:53	31-35	V 4	
	00:40			TURNOVER by WHITING, Shin
STEAL by MARTINEZ, Mil	00:38			
made LAYUP by MARTINEZ, Mil	00:32	33-35	V 2	
	00:08			TURNOVER by BROWN, Lako
STEAL by BARLIN, Nina	00:06			
made JUMPER(90A)-MARTINEZ, Mi	00:04	35-35	T 1	
ASSIST by BARLIN, Nina	00:04			
SCORE: GEORGIA TECH		35	Florida State	35

OFFICIAL BASKETBALL BOX SCORE -- F I R S T H A L F -- END OF PERIOD 1
 Florida State vs GEORGIA TECH
 1/5/00 7:34 p.m. at Alexander Memorial Coliseum

VISITORS: Florida State

C. N A M E		TOT-FG		3-PT		FT	FTA	REBOUNDS			PF	TP	A	TO	BLK	S	MIN
		FG	FGA	FG	FGA			OF	DE	TOT							
20 VUJAS, Katelyn	f	7	7	0	0	0	0	2	0	2	1	14	0	2	0	0	13
21 WYCKOFF, Brooke	f	2	7	0	1	0	0	3	1	4	2	4	0	1	0	0	15
13 TORRES, Levys	c	1	3	0	0	0	0	0	3	3	2	2	1	1	0	0	9
10 SPRINGLE, Lakesha	g	0	1	0	0	2	2	2	2	4	1	2	2	0	0	1	14
12 TRAYLOR, April	g	3	8	1	2	1	2	2	1	3	2	8	3	0	1	1	14
03 WHITING, Shinikki		1	4	0	2	2	2	0	1	1	1	4	1	2	0	0	11
04 HOFMANN, Petra		0	0	0	0	0	0	0	2	2	0	0	0	0	0	0	6
22 FUCHS, Vanessa		0	1	0	1	0	0	0	0	0	0	0	0	1	0	0	4
25 BROWN, Lako		0	0	0	0	1	2	0	0	0	0	1	0	1	0	0	8
32 BEAL, Molly		0	0	0	0	0	0	0	2	2	0	0	0	1	0	0	6
TEAM								0	1	1							
TOTALS		14	31	1	6	6	8	9	13	22	9	35	7	9	1	2	100

TOTAL FG% 1st Half: 14-31 .452 2nd Half: 0- 0 .000 Game: .452 DEADBALL
 3-Pt. FG% 1st Half: 1- 6 .167 2nd Half: 0- 0 .000 Game: .167 REBOUNDS
 F Throw % 1st Half: 6- 8 .750 2nd Half: 0- 0 .000 Game: .750 1, 1

HOME TEAM: GEORGIA TECH

No. N A M E		TOT-FG		3-PT		FT	FTA	REBOUNDS			PF	TP	A	TO	BLK	S	MIN
		FG	FGA	FG	FGA			OF	DE	TOT							
32 KRUPPA, Jaime	f	3	4	0	0	0	0	1	1	2	2	6	1	0	0	0	12
33 MALLORY, Sonja	c	5	8	0	0	1	3	4	1	5	1	11	0	0	0	0	16
02 BARLIN, Nina	g	1	2	0	1	0	0	0	0	0	1	2	5	3	1	1	18
0 BUTLER, Niesha	g	2	9	0	2	2	2	0	2	2	2	6	0	1	1	1	16
31 MARTINEZ, Milli	g	3	9	0	1	0	0	3	2	5	0	6	1	2	0	2	20
04 STEWART, Alex		0	3	0	0	2	2	0	0	0	0	2	0	0	0	0	6
20 BOATNER, Tamika		0	0	0	0	0	0	0	0	0	2	0	0	0	0	0	3
24 STOKES, Fallon		1	3	0	0	0	0	1	1	2	1	2	1	0	0	0	9
TEAM								1	1	2					1		
TOTALS		15	38	0	4	5	7	10	8	18	9	35	8	7	2	4	100

TOTAL FG% 1st Half: 15-38 .395 2nd Half: 0- 0 .000 Game: .395 DEADBALL
 3-Pt. FG% 1st Half: 0- 4 .000 2nd Half: 0- 0 .000 Game: .000 REBOUNDS
 F Throw % 1st Half: 5- 7 .714 2nd Half: 0- 0 .000 Game: .714 1, 1

OFFICIALS: Patty Broderick, Lisa Mattingly, Susan Barget

TECHNICAL FOULS:

Florida State - none

GEORGIA TECH - none

ATTENDANCE:

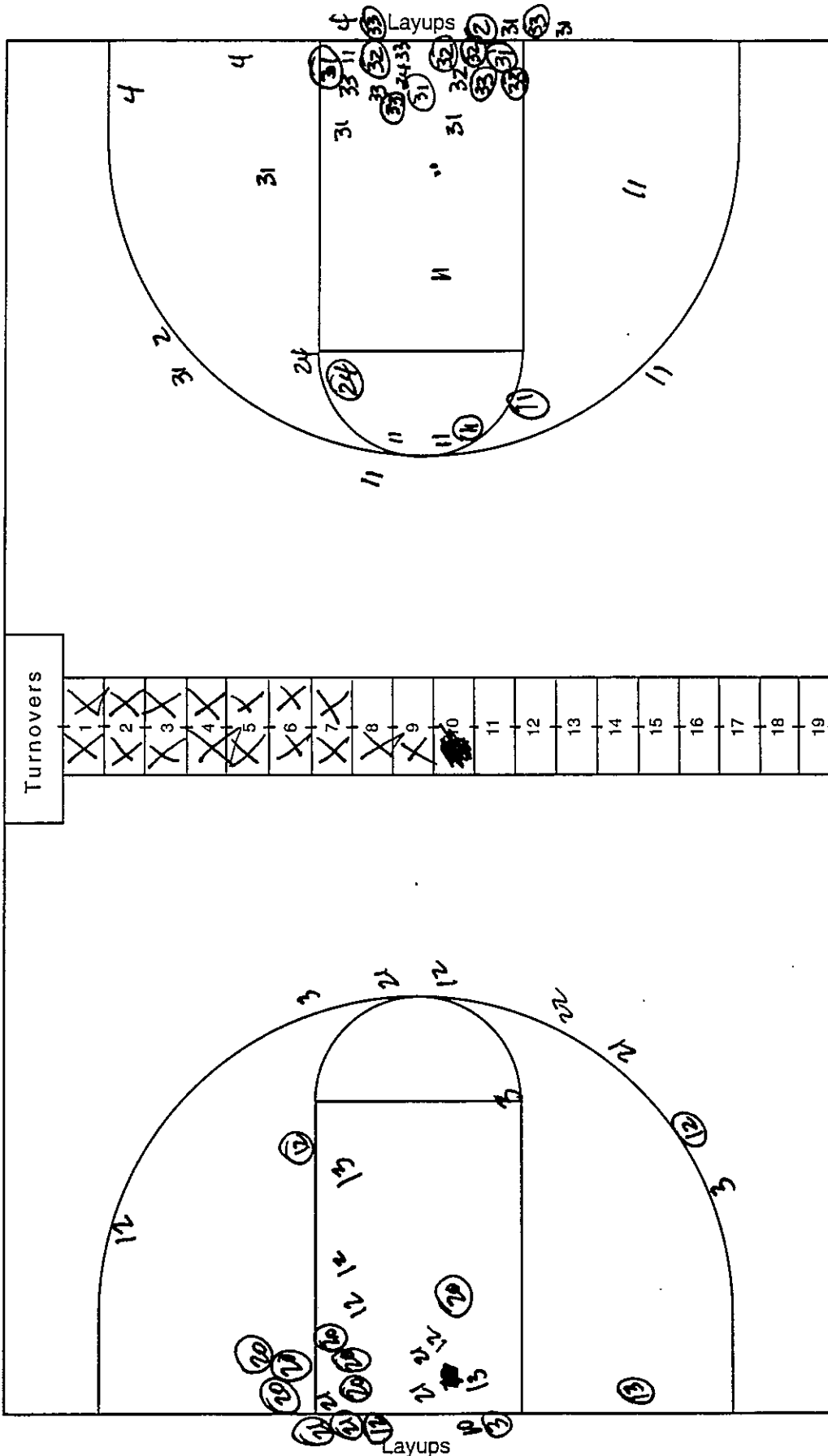
SCORE BY PERIODS:	1st	2nd	OT1	OT2	OT3	OT4	TOTAL
Florida State	35						35
GEORGIA TECH	35						35

NCAA® BASKETBALL SHOT CHART

First Half

Second Half

(Circle one)



Attempted 38
Made 15
Percentage 39.5%

Attempted 31
Made 14
Percentage 45.2%

Team GRU

Team FSU

Florida State at GEORGIA TECH			1/5/00	7:34 p.m.	PAGE 001
HOME TEAM: GEORGIA TECH			TIME	SCORE	PLA Y - - - VISITORS: Florida State
made JUMPER by KRUPPA, Jaime	19:01				TURNOVER by VUJAS, Kately
ASSIST by BUTLER, Niesh	18:44	37-35	H 2		
	18:44				
	18:31	37-37	T 1		made LAYUP by TORRES, Levys
	18:31				ASSIST by VUJAS, Kately
made JUMPER by MALLORY, Sonj	18:03	37-39	V 2		made JUMPER by TRAYLOR, Apri
ASSIST by BARLIN, Nina	17:41	39-39	T 2		
FOUL on BARLIN, Nina (P2T1)	17:41				
	17:26				
STEAL by BUTLER, Niesh	17:23				TURNOVER by TORRES, Levys
made LAYUP by MARTINEZ, Mil	17:23				
	17:07	41-39	H 2		
	16:56	41-41	T 3		made LAYUP by WYCKOFF, Broo
	16:56				ASSIST by TORRES, Levys
FOUL on BUTLER, Niesh(P3T2)	16:29	41-43	V 2		made JUMPER by TRAYLOR, Apri
	16:29				
	16:29	41-44	V 3		made F THROW by TRAYLOR, Apri
made F THROW by MARTINEZ, Mil	16:19	42-44	V 2		FOUL on TORRES, Levys(P3T1)
made F THROW by MARTINEZ, Mil	16:19	43-44	V 1		
	16:12				TURNOVER by WYCKOFF, Broo
	15:43				TURNOVER by TORRES, Levys
STEAL by MARTINEZ, Mil	15:42				
	15:42				FOUL on WYCKOFF, Broo(P3T2)
made F THROW by BUTLER, Niesh	15:42	44-44	T 4		
missd F THROW by BUTLER, Niesh	15:42				
FOUL on MARTINEZ, Mil(P1T3)	15:21	44-46	V 2		made JUMPER by TRAYLOR, Apri
	14:47				--- MEDIA TIMEOUT ---
	14:47				made LAYUP by WYCKOFF, Broo
TURNOVER by BARLIN, Nina	14:06	44-48	V 4		
	13:50				STEAL by WYCKOFF, Broo
	13:48				made LAYUP by WYCKOFF, Broo
	13:11	44-50	V 6		ASSIST by TRAYLOR, Apri
	13:11				
--- 20sec TIMEOUT ---	13:08				
TURNOVER by BOATNER, Tami	12:55				STEAL by VUJAS, Kately
	12:53				
FOUL on STEWART, Alex(P1T4)	12:48				
made JUMPER by BOATNER, Tami	12:10	46-50	V 4		
ASSIST by BUTLER, Niesh	12:10				
FOUL on BUTLER, Niesh(P4T5)	12:00				
FOUL on BOATNER, Tami(P3T6)	11:46				
	11:46	46-51	V 5		made F THROW by TRAYLOR, Apri
	11:46				missd F THROW by TRAYLOR, Apri
	11:11	46-53	V 7		made LAYUP by WYCKOFF, Broo
	11:00				FOUL on TORRES, Levys(P4T3)
--- MEDIA TIMEOUT ---	11:00				
TURNOVER by KRUPPA, Jaime	10:45				
	10:45				STEAL by WYCKOFF, Broo
FOUL on STEWART, Alex(P2T7)	09:55				missd F THROW by VUJAS, Kately
	09:55				
made 3-PNTR by MARTINEZ, Mil	09:43	49-53	V 4		
ASSIST by STEWART, Alex	09:43				
made JUMPER by STEWART, Alex	09:04	51-53	V 2		
ASSIST by KRUPPA, Jaime	09:04				
	08:14				FOUL on BROWN, Lako (P1T4)
	08:14				TURNOVER by BROWN, Lako
	07:17	51-55	V 4		made LAYUP by WHITING, Shin
	07:17				ASSIST by SPRINGLE, Lak
made LAYUP by STEWART, Alex	06:44	53-55	V 2		
	06:34	53-57	V 4		made JUMPER by WHITING, Shin
	05:55				FOUL on TRAYLOR, Apri(P3T5)
--- MEDIA TIMEOUT ---	05:55				
	05:34	53-59	V 6		made LAYUP by WHITING, Shin
made 3-PNTR by STEWART, Alex	05:13	56-59	V 3		
ASSIST by STOKES, Fallo	05:13				
FOUL on STOKES, Fallo(P2T8)	03:53				missd F THROW by WHITING, Shin
FOUL on BOATNER, Tami(P4T9)	03:52				
	03:52	56-60	V 4		made F THROW by TORRES, Levys
	03:52	56-61	V 5		made F THROW by TORRES, Levys
	03:52				--- MEDIA TIMEOUT ---
TURNOVER by BOATNER, Tami	03:02				TURNOVER by HOFMANN, Petr
FOUL on MARTINEZ, Mil(P2T10)	02:46				
	02:35				
	02:35	56-62	V 6		made F THROW by WYCKOFF, Broo
	02:35	56-63	V 7		made F THROW by WYCKOFF, Broo
made JUMPER by BUTLER, Niesh	02:21	58-63	V 5		
made JUMPER by BUTLER, Niesh	01:35	60-63	V 3		

--- 20sec TIMEOUT ---

missd F THROW by TRAYLOR, Apri
made F THROW by TRAYLOR, Apri

made F THROW by TRAYLOR, April

--- TIMEOUT # 1 ---

TURNOVER by TRAYLOR, Apri

```

--- 20sec TIMEOUT ---

```

FOUL on WYCKOFF, Broo(P4T6)

STEAL by TORRES, Levys

STEAL by TORRES, Levys

made F THROW by TRAYLOR, April

made F THROW by TRAYLOR, Apri
made F THROW by TRAYLOR, Apri

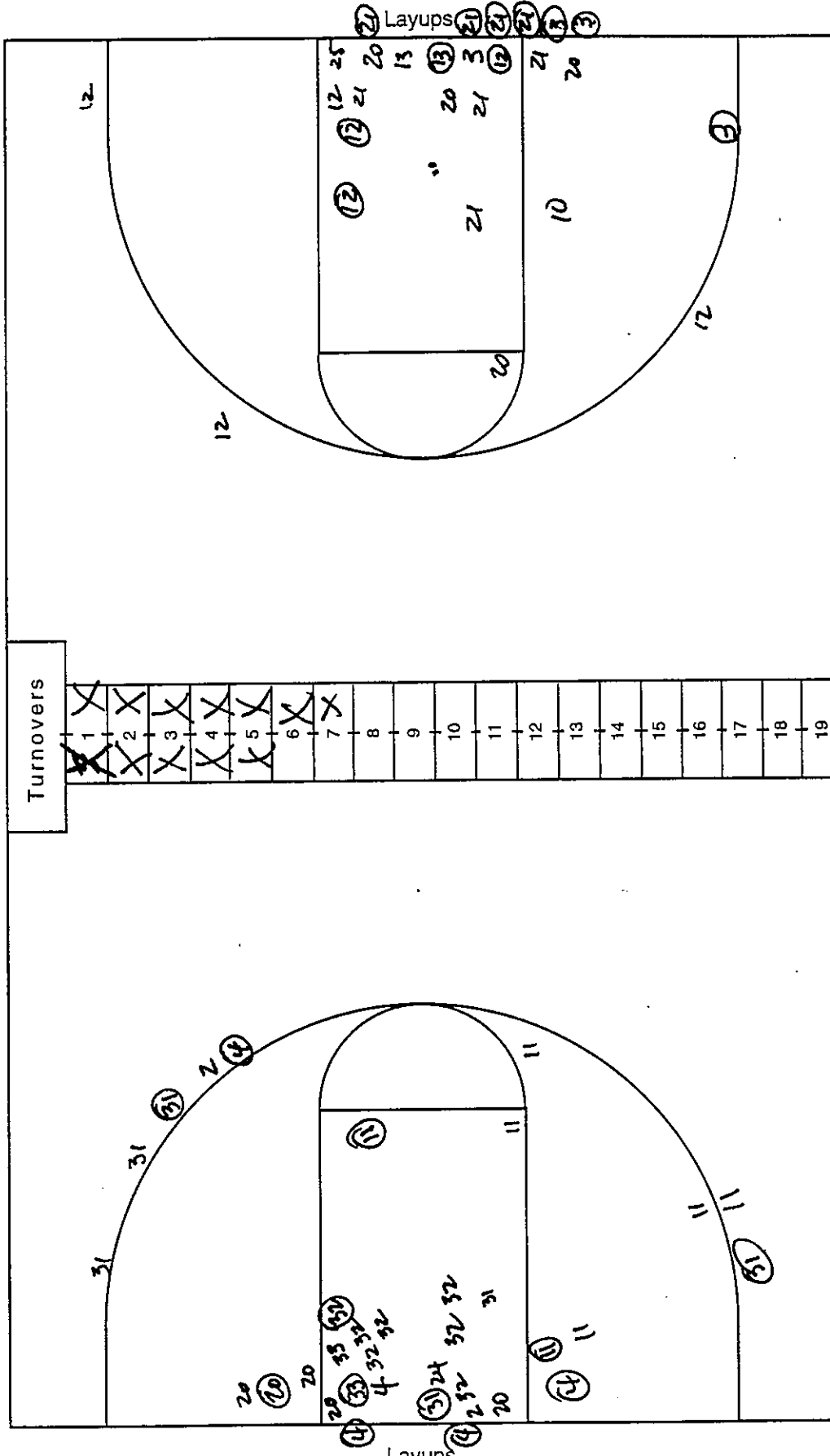
66

NCAA® BASKETBALL SHOT CHART

First Half

Second Half

(Circle one)



Attempted 26
 Made 11
 Percentage 40.7%

Attempted 35
 Made 12
 Percentage 34.3%

Team FSU

Team GTech