

OFFICIAL BASKETBALL BOX SCORE -- G A M E T O T A L S

Florida State Seminoles vs Iowa State Cyclones

3-18-01 1:07 pm at Hilton Coliseum, Ames, Iowa

SITORS: Florida State Seminoles 19-12

No.	N A M E	TOT-FG 3-PT			REBOUNDS			PF	TP	A	TO	BLK	S	MIN
		FG-FGA	FG-FGA	FT-FTA	OF	DE	TOT							
10	Springle, Lakesha	* 4-8	1-1	0-0	0	3	3	1	9	2	1	0	1	20
12	Traylor, April (1:39)	* 4-8	0-2	2-3	3	3	6	5	10	4	4	0	0	33
13	Torres, Levys	* 2-6	0-0	4-5	5	7	12	2	8	3	2	5	0	33
20	Vujas, Katelyn	* 7-13	0-0	1-2	1	1	2	3	15	2	2	0	1	26
21	Wyckoff, Brooke	* 3-13	1-5	1-2	1	4	5	4	8	5	0	0	0	33
03	Whiting, Shinikki	4-11	2-6	1-1	1	1	2	3	11	1	2	0	0	20
04	Hofmann, Petra	2-5	2-3	0-0	2	0	2	1	6	0	0	0	1	11
22	Fuchs, Vanessa	0-0	0-0	0-0	0	0	0	1	0	0	0	0	0	2
25	Brown, Lako	0-0	0-0	1-2	0	1	1	0	1	0	0	0	0	6
32	Beal, Molly	1-2	0-1	0-0	1	0	1	0	2	0	0	0	0	16
TEAM					0	1	1							
TOTALS		27-66	6-18	10-15	14	21	35	20	70	17	11	5	3	200

TOT-FG 1stH: 13-32 40.6% 2ndH: 14-34 41.2% OT: 0-0 00.0% Game: 40.9% Deadbl
 3pt-FG 1stH: 3-6 50.0% 2ndH: 3-12 25.0% OT: 0-0 00.0% Game: 33.3% Rebs
 FThrow 1stH: 2-3 66.7% 2ndH: 8-12 66.7% OT: 0-0 00.0% Game: 66.7% 3

HOME TEAM: Iowa State Cyclones 27-5

		TOT-FG 3-PT			REBOUNDS										
No.	N A M E	FG-FGA	FG-FGA	FT-FTA	OF	DE	TOT	PF	TP	A	TO	BLK	S	MIN	
12	Haugen, Erica	* 3-7	3-7	0-0	0	4	4	2	9	3	2	0	4	32	
1	Wilson, Lindsey	* 4-10	2-5	3-7	3	2	5	2	13	6	4	0	0	36	
1	Gahan, Tracy	* 4-6	2-2	4-5	3	6	9	4	14	5	1	0	1	37	
32	Welle, Angie	* 11-19	0-1	4-4	3	10	13	3	26	2	4	1	1	36	
51	Taylor, Megan	* 7-13	5-10	3-4	1	2	3	4	22	4	2	0	0	35	
00	Cipinyte, Gintare	0-0	0-0	1-2	0	1	1	1	1	0	0	0	0	4	
10	Junod, Erica	0-2	0-1	0-0	2	0	2	1	0	1	0	0	0	14	
15	Bordewyk, Holly	0-0	0-0	0-0	0	0	0	0	0	0	0	0	0	2	
23	Robson, Sarah	0-1	0-1	0-0	0	0	0	0	0	0	0	0	0	2	
35	Cizek, Kelly	0-1	0-0	0-0	0	0	0	0	0	0	0	0	0	2	
TEAM					1	1	2				1				
TOTALS		29-59	12-27	15-22	13	26	39	17	85	21	14	1	6	200	

TOT-FG 1stH: 14-32 43.8% 2ndH: 15-27 55.6% OT: 0-0 00.0% Game: 49.2% Deadbl
 3pt-FG 1stH: 7-15 46.7% 2ndH: 5-12 41.7% OT: 0-0 00.0% Game: 44.4% Rebs
 FThrow 1stH: 2-4 50.0% 2ndH: 13-18 72.2% OT: 0-0 00.0% Game: 68.2% 3, 1

OFFICIALS: June Courteau, Bonita Spence, Robert Rodriquez

TECHNICAL FOULS:

Florida State Seminoles - none

Iowa State Cyclones - none

ATTENDANCE: 11,756

SCORE BY PERIODS:	1st	2nd	OT1	OT2	OT3	OT4	TOTAL
Florida State Seminoles	31	39					70
Iowa State Cyclones	37	48					85

PTS IN THE PAINT: Florida State Seminoles - 18 Iowa State Cyclones - 30
 PTS OFF TURNOVERS: Florida State Seminoles - 16 Iowa State Cyclones - 07
 2ND CHANCE POINTS: Florida State Seminoles - 13 Iowa State Cyclones - 11
 FAST BREAK POINTS: Florida State Seminoles - 06 Iowa State Cyclones - 06

Florida State Semino at Iowa State Cyclones				3-18-01 1:07 pm	PAGE 001
- - - F I R S T H A L F P L A Y B Y				P L A Y - - -	VISITORS: Florida State Semin
HOME TEAM: Iowa State Cyclones	TIME	SCORE	MAR		
	19:34	0-2	V 2		made 2-Pntr by Wyckoff, Broo
missed 2-Pntr by Welle, Angie	19:34				ASSIST by Torres, Levys
	19:14				REBOUND(DEF) by Springle, Lak
made 2-Pntr by Welle, Angie	19:14				missed 2-Pntr by Torres, Levys
ASSIST by Haugen, Erica	19:08				
	18:45	2-2	T 1		
BLOCKED by Welle, Angie	18:45				missed 2-Pntr by Torres, Levys
REBOUND(DEF) by Gahan, Tracy	18:30				
made 3-Pntr by Taylor, Megan	18:30				
	18:29				
REBOUND(DEF) by Wilson, Linds	18:15	5-2	H 3		missed 2-Pntr by Springle, Lak
missed 3-Pntr by Taylor, Megan	17:50				
	17:50				REBOUND(DEF) by Traylor, Apri
	17:41				made 2-Pntr by Vujas, Kately
	17:41				ASSIST by Springle, Lak
made 3-Pntr by Haugen, Erica	17:30	5-4	H 1		
ASSIST by Taylor, Megan	17:30				
	17:14	8-4	H 4		
REBOUND(DEF) by Welle, Angie	17:14				missed 2-Pntr by Springle, Lak
TURNOVER by Gahan, Tracy	16:49				FOUL on Traylor, Apri(P1T1)
	16:49				
	16:38				STEAL by Springle, Lak
missed 3-Pntr by Taylor, Megan	16:24	8-6	H 2		made FASTB 2Pntr-Springle, La
	16:24				REBOUND(DEF) by Springle, Lak
	16:20				TURNOVER by Springle, Lak
STEAL by Haugen, Erica	15:55				
made 2-Pntr by Welle, Angie	15:47				
ASSIST by Gahan, Tracy	15:47	10-6	H 4		
	15:43				missed 2-Pntr by Vujas, Kately
REBOUND(DEF) by Haugen, Erica	15:43				
missed 3-Pntr by Wilson, Linds	15:30				
REBOUND(OFF) by Gahan, Tracy	15:30				
missed 2-Pntr by Wilson, Linds	15:12				
REBOUND(OFF) by Wilson, Linds	15:12				
made 3-Pntr by Wilson, Linds	15:10				
ASSIST by Haugen, Erica	15:10	13-6	H 7		
FOUL on Wilson, Linds(P1T1)	14:59				
	14:59				
	14:53				
missed 2-Pntr by Welle, Angie	14:46	13-8	H 5		made 2-Pntr by Vujas, Kately
	14:46				ASSIST by Wyckoff, Broo
	14:23				BLOCKED by Torres, Levys
	14:23				REBOUND(DEF) by Torres, Levys
REBOUND(DEF) by Taylor, Megan	14:21				missed 2-Pntr by Vujas, Kately
made 2-Pntr by Taylor, Megan	14:08				
	14:08				
TURNOVER by Welle, Angie	14:01	15-8	H 7		
	13:41	15-10	H 5		made 2-Pntr by Springle, Lak
	13:41				ASSIST by Traylor, Apri
FOUL on Gahan, Tracy (P1T2)	13:25				missed 2-Pntr by Traylor, Apri
	13:09				REBOUND(OFF) by Traylor, Apri
	13:09				
made 2-Pntr by Wilson, Linds	13:08	15-13	H 2		made 3-Pntr by Whiting, Shin
	13:01				ASSIST by Springle, Lak
	12:48	17-13	H 4		
	12:29	17-16	H 1		made 3-Pntr by Springle, Lak
missed 2-Pntr by Wilson, Linds	12:29				ASSIST by Vujas, Kately
REBOUND(OFF) by Gahan, Tracy	12:04				
made 3-Pntr by Taylor, Megan	12:04				
ASSIST by Wilson, Linds	11:59	20-16	H 4		
	11:59				
REBOUND(DEF) by Welle, Angie	11:43				missed 3-Pntr by Wyckoff, Broo
missed 3-Pntr by Welle, Angie	11:43				
	11:33				
	11:33				REBOUND(DEF) by Traylor, Apri
	11:24	20-18	H 2		made FASTB 2Pntr-Vujas, Katel
	11:24				ASSIST by Traylor, Apri
	11:10				FOUL on Vujas, Kately(P1T2)
--- MEDIA TIMEOUT ---	11:10				
TURNOVER by Haugen, Erica	11:04				
	10:44				missed 2-Pntr by Wyckoff, Broc
REBOUND(DEF) by Wilson, Linds	10:44				FOUL on Wyckoff, Broo(P1T3)
made F THROW by Gahan, Tracy	10:29				
	10:29	21-18	H 3		

missd F THROW by Gahan, Tracy	10:29			REBOUND(DEF) by Torres, Levys
	10:29			missed 2-Pntr by Whiting, Shin
	10:06			REBOUND(OFF) by Torres, Levys
	10:06			made 2-Pntr by Torres, Levys
made 2-Pntr by Welle, Angie	10:03	21-20	H 1	
ASSIST by Taylor, Megan	09:57	23-20	H 3	
	09:57			missed 3-Pntr by Whiting, Shin
	09:32			REBOUND(OFF) by Traylor, Apri
	09:32			missed 2-Pntr by Hofmann, Petr
FOUL on Haugen, Erica(P1T3)	09:29			
	09:20			
REBOUND(DEF) by Welle, Angie	09:20			
missed 3-Pntr by Haugen, Erica	08:53			
REBOUND(OFF) by Junod, Erica	08:53			
TEAM TURNOVER	08:49			
	08:31			TURNOVER by Torres, Levys
made 3-Pntr by Taylor, Megan	08:21	26-20	H 6	
ASSIST by Wilson, Linds	08:21			made 3-Pntr by Hofmann, Petr
	07:58	26-23	H 3	ASSIST by Torres, Levys
	07:58			
missed 3-Pntr by Taylor, Megan	07:41			REBOUND(DEF) by Torres, Levys
	07:41			TURNOVER by Whiting, Shin
	07:30			
--- MEDIA TIMEOUT ---	07:28			
FOUL on Welle, Angie (P1T4)	07:22			
TURNOVER by Welle, Angie	07:22			
	07:06			missed 2-Pntr by Hofmann, Petr
	07:06			REBOUND(OFF) by Whiting, Shin
	07:01			missed 2-Pntr by Whiting, Shin
	07:01			REBOUND(OFF) by Wyckoff, Broo
	06:57			missed 2-Pntr by Wyckoff, Broo
REBOUND(DEF) by Welle, Angie	06:57			
made 2-Pntr by Gahan, Tracy	06:43	28-23	H 5	
	06:43			FOUL on Whiting, Shin(P1T4)
made F THROW by Gahan, Tracy	06:43	29-23	H 6	
	06:29			missed 2-Pntr by Vujas, Kately
REBOUND(DEF) by Welle, Angie	06:29			
TURNOVER by Haugen, Erica	06:13			
	06:11			STEAL by Vujas, Kately
	05:58			missed 2-Pntr by Springle, Lak
	05:58			REBOUND(OFF) by Beal, Molly
FOUL on Taylor, Megan(P1T5)	05:47			TURNOVER by Traylor, Apri
	05:32			
STEAL by Welle, Angie	05:31			
missed 2-Pntr by Welle, Angie	05:18			REBOUND(DEF) by Wyckoff, Broo
	05:18			missed 2-Pntr by Vujas, Kately
	05:04			
REBOUND(DEF) by Gahan, Tracy	05:04			FOUL on Wyckoff, Broo(P2T5)
	05:03			--- TIMEOUT # 1 ---
	05:03			
TURNOVER by Taylor, Megan	04:59			
	04:46	29-25	H 4	made 2-Pntr by Torres, Levys
	04:46			ASSIST by Traylor, Apri
made 3-Pntr by Gahan, Tracy	04:25	32-25	H 7	
ASSIST by Taylor, Megan	04:25			
	04:23			FOUL on Traylor, Apri(P2T6)
	04:23			TURNOVER by Traylor, Apri
missed 3-Pntr by Wilson, Linds	04:18			
	04:18			REBOUND(DEF) by Vujas, Kately
	04:14			TURNOVER by Vujas, Kately
missed 2-Pntr by Welle, Angie	04:04			
	03:49	32-27	H 5	made 2-Pntr by Traylor, Apri
made 3-Pntr by Haugen, Erica	03:33	35-27	H 8	
	03:09			TURNOVER by Traylor, Apri
STEAL by Haugen, Erica	03:08			
missed 2-Pntr by Wilson, Linds	02:40			
	02:40			REBOUND(DEF) by Traylor, Apri
	02:36	35-29	H 6	made FASTB 2Pntr-Traylor, Apr
FOUL on Taylor, Megan(P2T6)	02:36			
	02:36	35-30	H 5	made F THROW by Traylor, Apri
	02:36			
--- MEDIA TIMEOUT ---	02:24			
missed 3-Pntr by Junod, Erica	02:24			REBOUND(DEF) by Springle, Lak
	02:16			TURNOVER by Traylor, Apri
	02:15			
STEAL by Gahan, Tracy	02:02			
missed 2-Pntr by Gahan, Tracy	02:02			REBOUND(DEF) by Torres, Levys
	01:39			TURNOVER by Torres, Levys
	01:37			
STEAL by Haugen, Erica	01:37			
missed 2-Pntr by Junod, Erica	01:33			

	01:33		BLOCKED by Torres, Levys
	01:31		REBOUND(DEF) by Torres, Levys
FOUL on Junod, Erica (P1T7)	01:14		
	01:14		missd F THROW by Traylor, Apri
missd 2-Pntr by Welle, Angie	01:14	35-31 H 4	made F THROW by Traylor, Apri
	00:53		
	00:53		BLOCKED by Torres, Levys
	00:51		REBOUND(DEF) by Whiting, Shin
	00:47		TURNOVER by Whiting, Shin
STEAL by Haugen, Erica	00:46		
made 2-Pntr by Welle, Angie	00:40	37-31 H 6	
ASSIST by Junod, Erica	00:40		
	00:22		TURNOVER by Vujas, Kately
--- 30sec TIMEOUT ---	00:22		
	00:13		FOUL on Hofmann, Petr(P1T7)
missd F THROW by Wilson, Linds	00:13		
	00:13		REBOUND(DEF) by Torres, Levys
	00:05		missed 3-Pntr by Whiting, Shin
	00:05		REBOUND(OFF) by Torres, Levys

SCORE: Iowa State Cyclones 37, Florida State Semino 31

=====SPECIALTY STATS FOR 1st half=====

PTS IN THE PAINT:	Florida State Semino - 14	Iowa State Cyclones - 14
PTS OFF TURNOVERS:	Florida State Semino - 07	Iowa State Cyclones - 07
2ND CHANCE POINTS:	Florida State Semino - 05	Iowa State Cyclones - 06
FAST BREAK POINTS:	Florida State Semino - 06	Iowa State Cyclones - 00

#TIES= 1; #LEAD CHANGES= 1; LARGEST LEAD= 8 by Iowa State Cyclones at 02:40

=====

OFFICIAL BASKETBALL BOX SCORE -- F I R S T H A L F -- END OF PERIOD 1
 Florida State Seminoles vs Iowa State Cyclones
 3-18-01 1:07 pm at Hilton Coliseum, Ames, Iowa

VISITORS: Florida State Seminoles																	
No.	N A M E		TOT-FG		3-PT	REBOUNDS					PF	TP	A	TO	BLK	S	MIN
			FG-FGA	FG-FGA	FT-FTA	OF	DE	TOT									
10	Springle, Lakesha	*	3-6	1-1	0-0	0	3	3	0	7	2	1	0	1	13		
12	Traylor, April	*	2-3	0-0	2-3	2	3	5	2	6	3	4	0	0	17		
13	Torres, Levys	*	2-4	0-0	0-0	2	6	8	0	4	2	2	3	0	15		
20	Vujas, Katelyn	*	3-7	0-0	0-0	0	1	1	1	6	1	2	0	1	14		
21	Wyckoff, Brooke	*	1-4	0-1	0-0	1	1	2	2	2	1	0	0	0	15		
03	Whiting, Shinikki		1-5	1-3	0-0	1	1	2	1	3	0	2	0	0	11		
04	Hofmann, Petra		1-3	1-1	0-0	0	0	0	1	3	0	0	0	0	5		
25	Brown, Lako		0-0	0-0	0-0	0	0	0	0	0	0	0	0	0	3		
32	Beal, Molly		0-0	0-0	0-0	1	0	1	0	0	0	0	0	0	7		
TEAM						0	1	1									
TOTALS			13-32	3-6	2-3	7	16	23	7	31	9	11	3	2	100		

TOT-FG 1stH: 13-32 40.6% 2ndH: 0-0 00.0% OT: 0-0 00.0% Game: 40.6% Deadbl
 3pt-FG 1stH: 3-6 50.0% 2ndH: 0-0 00.0% OT: 0-0 00.0% Game: 50.0% Rebs
 FThrow 1stH: 2-3 66.7% 2ndH: 0-0 00.0% OT: 0-0 00.0% Game: 66.7% 1

HOME TEAM: Iowa State Cyclones																		
No.	N A M E		TOT-FG			3-PT			REBOUNDS			PF	TP	A	TO	BLK	S	MIN
			FG-FGA	FG-FGA	FT-FTA	OF	DE	TOT										
12	Haugen, Erica	*	2-3	2-3	0-0	0	1	1	1	6	2	2	0	4	17			
13	Wilson, Lindsey	*	2-7	1-3	0-1	1	2	3	1	5	2	0	0	0	19			
20	Gahan, Tracy	*	2-3	1-1	2-3	2	2	4	1	7	1	1	0	1	19			
30	Welle, Angie	*	4-10	0-1	0-0	0	5	5	1	8	0	2	1	1	19			
51	Taylor, Megan	*	4-7	3-6	0-0	0	1	1	2	11	3	1	0	0	17			
00	Cipinyte, Gintare		0-0	0-0	0-0	0	0	0	0	0	0	0	0	0	1			
10	Junod, Erica		0-2	0-1	0-0	1	0	1	1	0	1	0	0	0	8			
TEAM						0	1	1					1					
TOTALS			14-32	7-15	2-4	4	12	16	7	37	9	7	1	6	100			

TOT-FG 1stH: 14-32 43.8% 2ndH: 0-0 00.0% OT: 0-0 00.0% Game: 43.8% Deadbl
 3pt-FG 1stH: 7-15 46.7% 2ndH: 0-0 00.0% OT: 0-0 00.0% Game: 46.7% Rebs
 FThrow 1stH: 2-4 50.0% 2ndH: 0-0 00.0% OT: 0-0 00.0% Game: 50.0% 0

OFFICIALS: June Courteau, Bonita Spence, Robert Rodriguez

TECHNICAL FOULS:

Florida State Seminoles - none
 Iowa State Cyclones - none

ATTENDANCE:

SCORE BY PERIODS:	1st	2nd	OT1	OT2	OT3	OT4	TOTAL
Florida State Seminoles	31						31
Iowa State Cyclones	37						37

PTS IN THE PAINT: Florida State Seminoles - 14 Iowa State Cyclones - 14
 PTS OFF TURNOVERS: Florida State Seminoles - 07 Iowa State Cyclones - 07
 2ND CHANCE POINTS: Florida State Seminoles - 05 Iowa State Cyclones - 06
 FAST BREAK POINTS: Florida State Seminoles - 06 Iowa State Cyclones - 00

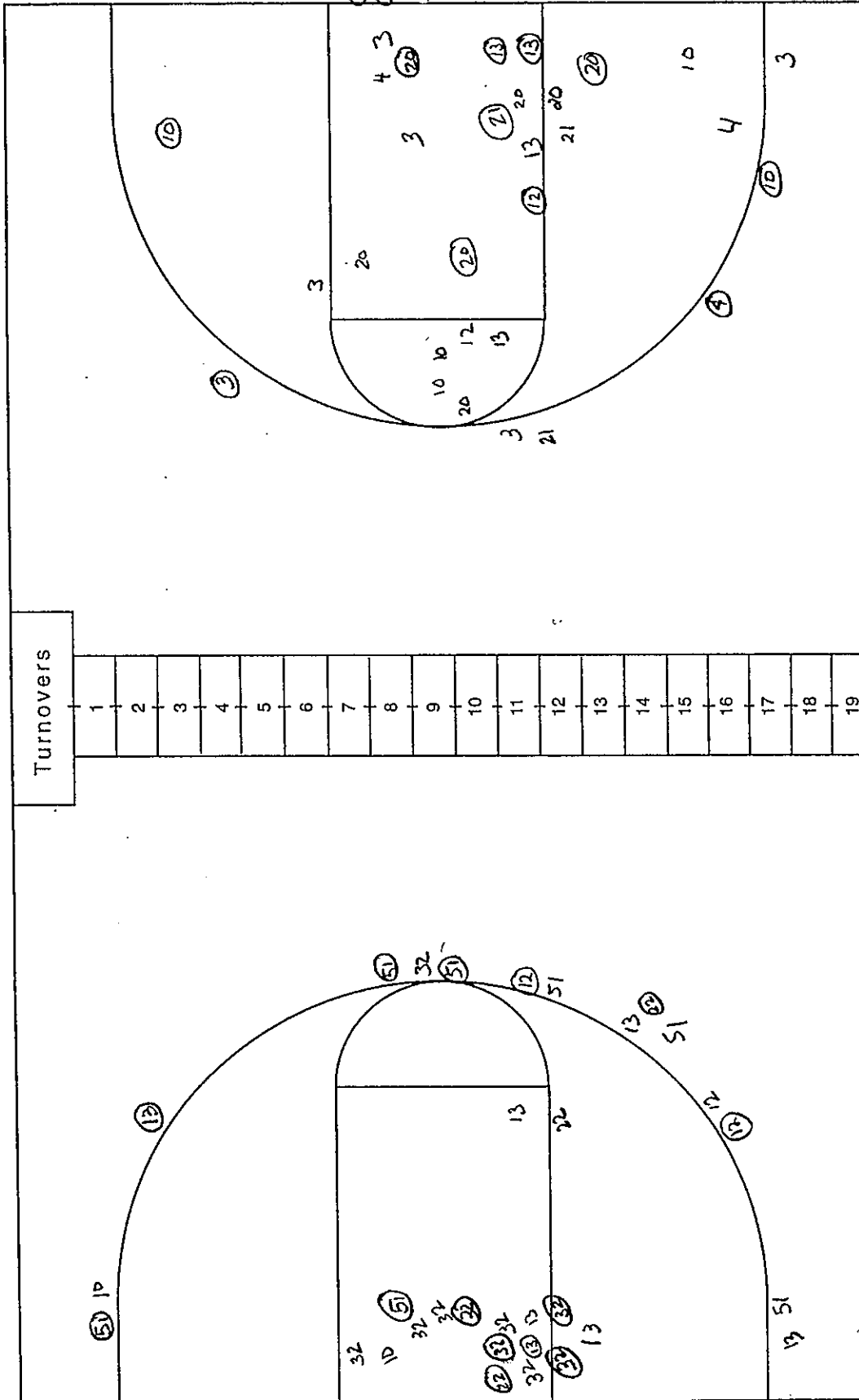
NCAA® BASKETBALL SHOT CHART

First Half

Second Half

(Circle one)

22 Layups



Attempted_____

Made _____

Percentage_____

Attempted_____

Made _____

Percentage_____

1 avins

Florida State Semino at Iowa State Cyclones		3-18-01 1:07 pm		PAGE 001	
HOME TEAM: Iowa State Cyclones		VISITORS: Florida State Semin			
TIME	SCORE	B Y			
made 3-Pntr by Haugen, Erica	19:47	40-31	H 9		
ASSIST by Wilson, Linds	19:47				
	19:24			missed 2-Pntr by Wyckoff, Broo	
	19:24			REBOUND(OFF) by Traylor, Apri	
made 2-Pntr by Gahan, Tracy	19:21	40-33	H 7	made 2-Pntr by Traylor, Apri	
	19:07	42-33	H 9		
	18:49	42-35	H 7	made 2-Pntr by Vujas, Kately	
	18:49			ASSIST by Torres, Levys	
missed 2-Pntr by Welle, Angie	18:34			BLOCKED by Torres, Levys	
	18:34				
made 3-Pntr by Gahan, Tracy	18:31	45-35	H10		
ASSIST by Welle, Angie	18:31				
	18:08			missed 2-Pntr by Wyckoff, Broo	
REBOUND(DEF) by Haugen, Erica	18:08				
made FASTB 2Pntr-Welle, Angie	18:01	47-35	H12		
ASSIST by Gahan, Tracy	18:01				
	17:58			--- 30sec TIMEOUT ---	
	17:47	47-37	H10	made 2-Pntr by Springle, Lak	
	17:47			ASSIST by Wyckoff, Broo	
missed 3-Pntr by Haugen, Erica	17:22				
REBOUND(OFF) by Taylor, Megan	17:22				
TURNOVER by Welle, Angie	17:05				
	16:46			missed 2-Pntr by Whiting, Shin	
REBOUND(DEF) by Gahan, Tracy	16:46				
made FASTB 2Pntr-Welle, Angie	16:40	49-37	H12		
ASSIST by Wilson, Linds	16:40				
	16:26			missed 3-Pntr by Whiting, Shin	
TURNOVER by Welle, Angie	16:26				
FOUL on Welle, Angie (P2T1)	16:26				
	16:13			missed 2-Pntr by Wyckoff, Broo	
REBOUND(DEF) by Welle, Angie	16:13				
missed 3-Pntr by Taylor, Megan	16:08				
REBOUND(OFF) by Wilson, Linds	16:08			FOUL on Whiting, Shin(P2T1)	
	16:05				
TURNOVER by Wilson, Linds	16:02				
	15:47	49-39	H10	made 2-Pntr by Vujas, Kately	
	15:38			FOUL on Whiting, Shin(P3T2)	
made F THROW by Welle, Angie	15:38	50-39	H11		
made F THROW by Welle, Angie	15:38	51-39	H12		
FOUL on Gahan, Tracy (P2T2)	15:18				
	15:15	51-41	H10	made 2-Pntr by Vujas, Kately	
	15:15			ASSIST by Wyckoff, Broo	
missed 3-Pntr by Taylor, Megan	15:02			REBOUND(DEF) by Wyckoff, Broo	
	15:02			missed 3-Pntr by Traylor, Apri	
	14:44				
REBOUND(DEF) by Welle, Angie	14:44				
made 3-Pntr by Taylor, Megan	14:34	54-41	H13		
ASSIST by Wilson, Linds	14:34				
	14:14	54-43	H11	made 2-Pntr by Beal, Molly	
	14:14			ASSIST by Wyckoff, Broo	
missed 2-Pntr by Gahan, Tracy	13:49			BLOCKED by Torres, Levys	
	13:49				
REBOUND(OFF) by Welle, Angie	13:49				
--- 30sec TIMEOUT ---	13:49				
missed 3-Pntr by Haugen, Erica	13:38				
REBOUND(OFF) by Welle, Angie	13:38				
	13:37			FOUL on Torres, Levys(P1T3)	
missed 3-Pntr by Wilson, Linds	13:18				
REBOUND(OFF) by Gahan, Tracy	13:18				
missed 2-Pntr by Welle, Angie	13:08				
	13:08			REBOUND(DEF) by Wyckoff, Broo	
	12:54			missed 2-Pntr by Torres, Levys	
	12:54			REBOUND(OFF) by Vujas, Kately	
FOUL on Welle, Angie (P3T3)	12:51				
	12:51				
	12:51	54-44	H10	missd F THROW by Vujas, Kately	
	12:43			made F THROW by Vujas, Kately	
missed 3-Pntr by Haugen, Erica	12:34			FOUL on Vujas, Kately(P2T4)	
REBOUND(OFF) by Wilson, Linds	12:34				
	12:34			FOUL on Traylor, Apri(P3T5)	
FOUL on Wilson, Linds(P2T4)	12:33				
TURNOVER by Wilson, Linds	12:33				
	12:18	54-46	H 8	made 2-Pntr by Wyckoff, Broo	
	12:18			ASSIST by Vujas, Kately	
TURNOVER by Wilson, Linds	11:53			STEAL by Hofmann, Petr	
	11:53				

---	11:45			missed 3-Pntr by Beal, Molly
MEDIA TIMEOUT ---	11:45			REBOUND(OFF) by Hofmann, Petr
made 3-Pntr by Wilson, Linds	11:37	54-49	H 5	made 3-Pntr by Wyckoff, Broo
ASSIST by Gahan, Tracy	11:33			
	11:14	57-49	H 8	
	11:14			
	10:59	57-52	H 5	made 3-Pntr by Hofmann, Petr
	10:59			ASSIST by Wyckoff, Broo
missd F THROW by Taylor, Megan	10:35			FOUL on Torres, Levys(P2T6)
made F THROW by Taylor, Megan	10:35	58-52	H 6	
	10:35			
	10:15			missed 2-Pntr by Vujas, Kately
	10:15			REBOUND(OFF) by Hofmann, Petr
	10:03			missed 2-Pntr by Wyckoff, Broo
REBOUND(DEF) by Gahan, Tracy	10:03			
made 2-Pntr by Wilson, Linds	09:39	60-52	H 8	
	09:25			missed 2-Pntr by Vujas, Kately
REBOUND(DEF) by Welle, Angie	09:25			
made 2-Pntr by Welle, Angie	09:15	62-52	H10	
ASSIST by Taylor, Megan	09:08			
	09:08			---
	08:51			30sec TIMEOUT ---
REBOUND(DEF) by Welle, Angie	08:51			missed 3-Pntr by Wyckoff, Broo
	08:49			FOUL on Vujas, Kately(P3T7)
made F THROW by Welle, Angie	08:49	63-52	H11	
made F THROW by Welle, Angie	08:49	64-52	H12	
FOUL on Gahan, Tracy (P3T5)	08:27			
	08:27	64-53	H11	made F THROW by Brown, Lako
	08:27			missd F THROW by Brown, Lako
REBOUND(DEF) by Haugen, Erica	08:27			
TURNOVER by Wilson, Linds	08:10			
	07:56	64-55	H 9	made 2-Pntr by Whiting, Shin
TURNOVER by Taylor, Megan	07:35			
	07:35			---
	07:16			MEDIA TIMEOUT ---
REBOUND(DEF) by Gahan, Tracy	07:16			missed 3-Pntr by Hofmann, Petr
made 2-Pntr by Taylor, Megan	07:05	66-55	H11	
ASSIST by Haugen, Erica	07:05			
FOUL on Haugen, Erica(P2T6)	06:44			
	06:44			missd F THROW by Wyckoff, Broo
	06:44	66-56	H10	made F THROW by Wyckoff, Broo
	06:19			FOUL on Wyckoff, Broo(P3T8)
made F THROW by Taylor, Megan	06:19	67-56	H11	
made F THROW by Taylor, Megan	06:19	68-56	H12	
	06:00			missed 2-Pntr by Traylor, Apri
REBOUND(DEF) by Haugen, Erica	06:00			
made 2-Pntr by Welle, Angie	05:49	70-56	H14	
ASSIST by Gahan, Tracy	05:49			
	05:37			missed 3-Pntr by Wyckoff, Broo
	05:37			REBOUND(OFF) by Torres, Levys
FOUL on Taylor, Megan(P3T7)	05:35			
	05:35			missd F THROW by Torres, Levys
REBOUND(DEF) by Gahan, Tracy	05:35			FOUL on Springle, Lak(P1T9)
	05:23			
made F THROW by Wilson, Linds	05:23	71-56	H15	
made F THROW by Wilson, Linds	05:23	72-56	H16	
	04:59			missed 3-Pntr by Whiting, Shin
REBOUND(DEF) by Taylor, Megan	04:59			
made FASTB 2Pntr-Welle, Angie	04:51	74-56	H18	
ASSIST by Gahan, Tracy	04:51			
	04:45			---
	04:30	74-58	H16	30sec TIMEOUT ---
	04:06			made 2-Pntr by Traylor, Apri
made F THROW by Gahan, Tracy	04:06	75-58	H17	FOUL on Wyckoff, Broo(P4T10)
made F THROW by Gahan, Tracy	04:06	76-58	H18	
	03:55			missed 3-Pntr by Traylor, Apri
REBOUND(DEF) by Welle, Angie	03:55			FOUL on Traylor, Apri(P4T11)
	03:50			
missd F THROW by Wilson, Linds	03:50	77-58	H19	
made F THROW by Wilson, Linds	03:50			---
	03:32	77-61	H16	MEDIA TIMEOUT ---
	03:32			made 3-Pntr by Whiting, Shin
	03:15	79-61	H18	ASSIST by Traylor, Apri
made 2-Pntr by Welle, Angie	03:15			
ASSIST by Wilson, Linds	03:01	79-63	H16	made 2-Pntr by Vujas, Kately
	03:01			ASSIST by Whiting, Shin
made 3-Pntr by Taylor, Megan	02:43	82-63	H19	
ASSIST by Welle, Angie	02:43			
	02:29	82-65	H17	made 2-Pntr by Whiting, Shin

FOUL on Taylor, Megan(P4T8)	02:29			
missed 2-Pntr by Taylor, Megan	02:29	82-66	H16	made F THROW by Whiting, Shin
REBOUND(OFF) by Welle, Angie	02:00			
made 2-Pntr by Welle, Angie	01:58	84-66	H18	
FOUL on Gahan, Tracy (P4T9)	01:43			
	01:43	84-67	H17	made F THROW by Torres, Levys
	01:43	84-68	H16	made F THROW by Torres, Levys
	01:33			FOUL on Traylor, Apri(P5T12)
missd F THROW by Wilson, Linds	01:33			
missd F THROW by Wilson, Linds	01:33			
REBOUND(OFF) by Junod, Erica	01:33			
--- 30sec TIMEOUT ---	01:33			
missed 2-Pntr by Cizek, Kelly	01:12			
	01:12			REBOUND(DEF) by Torres, Levys
	00:56			missed 2-Pntr by Springple, Lak
	00:56			REBOUND(OFF) by Torres, Levys
	00:54			missed 2-Pntr by Torres, Levys
	00:54			REBOUND(OFF) by Torres, Levys
FOUL on Cipinyte, Gin(P1T10)	00:51			
	00:51	84-69	H15	made F THROW by Torres, Levys
missed 3-Pntr by Robson, Sarah	00:51	84-70	H14	made F THROW by Torres, Levys
	00:22			
	00:22			REBOUND(DEF) by Wyckoff, Broo
REBOUND(DEF) by Cipinyte, Gin	00:15			missed 3-Pntr by Wyckoff, Broo
	00:15			
made F THROW by Cipinyte, Gin	00:12			FOUL on Fuchs, Vaness(P1T13)
missd F THROW by Cipinyte, Gin	00:12	85-70	H15	
	00:12			
	00:12			REBOUND(DEF) by Brown, Lako

SCORE: Iowa State Cyclones 85, Florida State Semino 70

=====SPECIALTY STATS FOR 2nd half=====

PTS IN THE PAINT:	Florida State Semino - 04	Iowa State Cyclones - 16
PTS OFF TURNOVERS:	Florida State Semino - 09	Iowa State Cyclones - 00
2ND CHANCE POINTS:	Florida State Semino - 08	Iowa State Cyclones - 05
FAST BREAK POINTS:	Florida State Semino - 00	Iowa State Cyclones - 06

#TIES= 0; #LEAD CHANGES= 0; LARGEST LEAD= 19 by Iowa State Cyclones at 02:43

=====

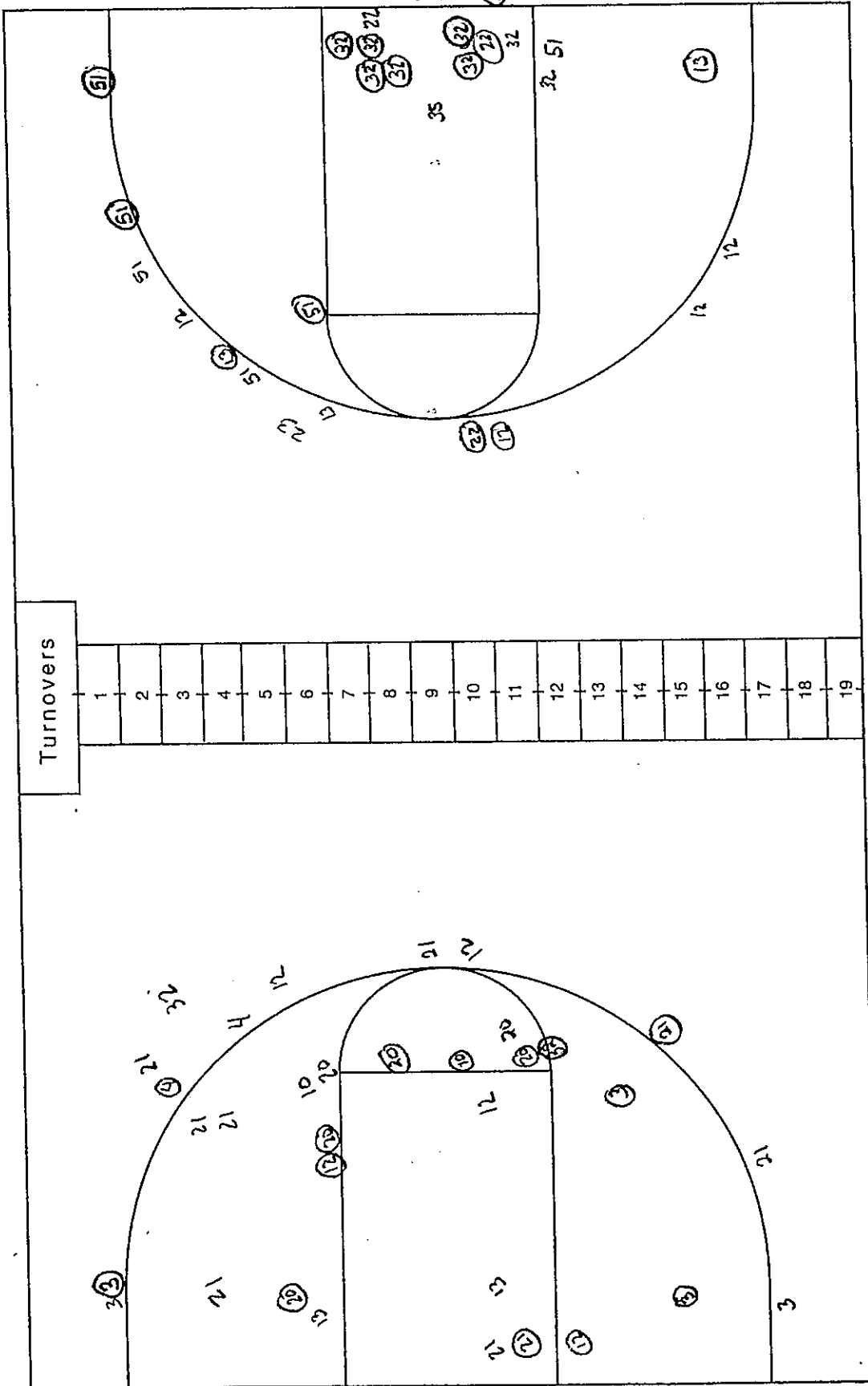
NCAA® BASKETBALL SHOT CHART

First Half

Second Half

(Circle one)

Layups



Attempted _____

Made _____

Percentage _____

Attempted _____

Made _____

Percentage _____

Team IOWA STATE

Team FLORIDA STATE