

FLORIDA STATE UNIVERSITY

S P O R T S I N F O R M A T I O N

P.O. BOX 2195 TALLAHASSEE, FL 32316
(904) 644-1403 FAX: 644-3820



FOR IMMEDIATE RELEASE

FLORIDA STATE SOCCER FALLS TO DUKE
September 24, 1995

TALLAHASSEE, FL -- Despite an excellent showing, the Florida State University soccer team fell 0-2 to the 10th-ranked Duke Blue Devils, in front of a record 903 fans at the FSU intramural fields today. With the loss, FSU falls to 3-3-1 on the season and 0-2 in the ACC, while Duke improves to 6-2 overall and 3-0 in the league.

Duke Katherine Remy got things started for the Blue Devils with an unassisted 18 yarder at the 25-minute mark. Florida State was outshot 13-3 in the first half. Duke's Kari Juncker scored the Blue Devils' second goal at 66:00 on a rebound shot off of Missy Durham's attempt. FSU stepped things up in the second half as Alexandra Osorio tallied three solid attempts for the 'Noles.

"It was an awesome game," FSU coach Heather Kerby said. "The team was brilliant. I couldn't be happier with our performance. We had a real solid week of practice and the things we taught them were all implemented today."

Duke's other ACC wins include a 2-1 victory over Wake Forest and a 1-0 win over Clemson. Last season, Duke placed first in the ACC and advanced to the second round of the NCAA Tournament. The Blue Devils finished with a 17-5-1 record. The veteran program is now in its eighth season.

"What is the most exciting is to think that we can compete with a program like Duke's in our first season," Kerby said. "I can't wait to see what we'll be able to do in a few years."

FSU goalkeeper Melissa Juhl again had a busy afternoon, recording a season-high 21 saves.

"We were able to play everybody today, with the exception of our backup goalkeeper," Kerby said. "I wasn't about to touch Melissa. She played brilliant, probably the best we've seen her play this season."

Juhl was also pleased with the performance of the Seminoles today.

"We expected Duke to come out and show us what ACC soccer is all about," Juhl said. "And they did. But today, we didn't give them anything. They earned everything they got."

Florida State will return to action tomorrow against Georgia Southern, in its last home match of the season. The match will kickoff at 4 p.m.

Scoring: Katherine Remy (unassisted) 25:00
Kari Juncker (unassisted) 66:00
Shots: Duke: 29 FSU: 8 Corners: Duke: 7 FSU: 1
GK Saves: Duke: 7 FSU: 21 Att: 903

VISITOR Duke		HOME Florida State	
DATE 9-24-95	OFFICIALS Diego Tobon, Paul Milette, Hector Tobin		
WEATHER Overcast, light wind, pleasant 68°		ATTENDANCE 903	

VISITOR Duke	1	2	OT	OT	1
HOME Florida State	0	0			0

1st SHOT CHART

2nd SHOT CHART

VISITOR				HOME			
SHOTS	GOALS	ASSTS.	NO.	NAME	POS.	NAME	NO.
1			1	Melissa Carr		Molly NYC	3
3			3	Cara Lyons		Alexandra Osorio	5
7			7	Mandy Lehr		Lauren Lynch	6
6			6	Katherine Remy		Janine Lavoie	7
8			8	Kari Juncker		Kelly Huff	8
9			9	Kelly Walbert		Janna Walkup	10
13			13	Mariana Muiruri		Melissa Juhl	13
14			14	Andi Melde		Kelly Duffek	14
15			15	Missy Durham		Shannon Smith	16
16			16	Lauren Cyran		Lizzie Easton	22
20			20	Samantha Baggett		Jennifer Yocca	21

SUBSTITUTIONS							
5	Emily Studebaker	Erica Schuler	11				
12	Deanna Kreidel	Jacki Stratman	2	11			
19	Dana Piper GK	Kelly McBrath	4	1			
23	Laura Flatauer	Katie Lynn	9				
		Erin Vester	1				
		Allison Hogan	17				
		Jessica Driscoll	18				
		Jenni Sharpe	12				

GOAL BY:	TEAM	TIME*	ASST(S)	DESCRIPTION
#6 Katherine Remy	Duke	25:00	none	point blank outside 18
#8 Kari Juncker	Duke	66:00	none	rebound from 15's shot

CAUTIONS & EJECTIONS:

1st SHOT CHART

2nd SHOT CHART

SHOTS 8

1	2	3	4	5	6	7	8	9	10
11	12	13	14	15	16	17	18	19	20
21	22	23	24	25	26	27	28	29	30
31	32	33	34	35	36	37	38	39	40

CORNER KICKS 1

1	2	3	4	5	6	7	8	9	10
11	12	13	14	15	16	17	18	19	20

GOALIE SAVES 21

1	2	3	4	5	6	7	8	9	10
11	12	13	14	15	16	17	18	19	20
21	22	23	24	25	26	27	28	29	30

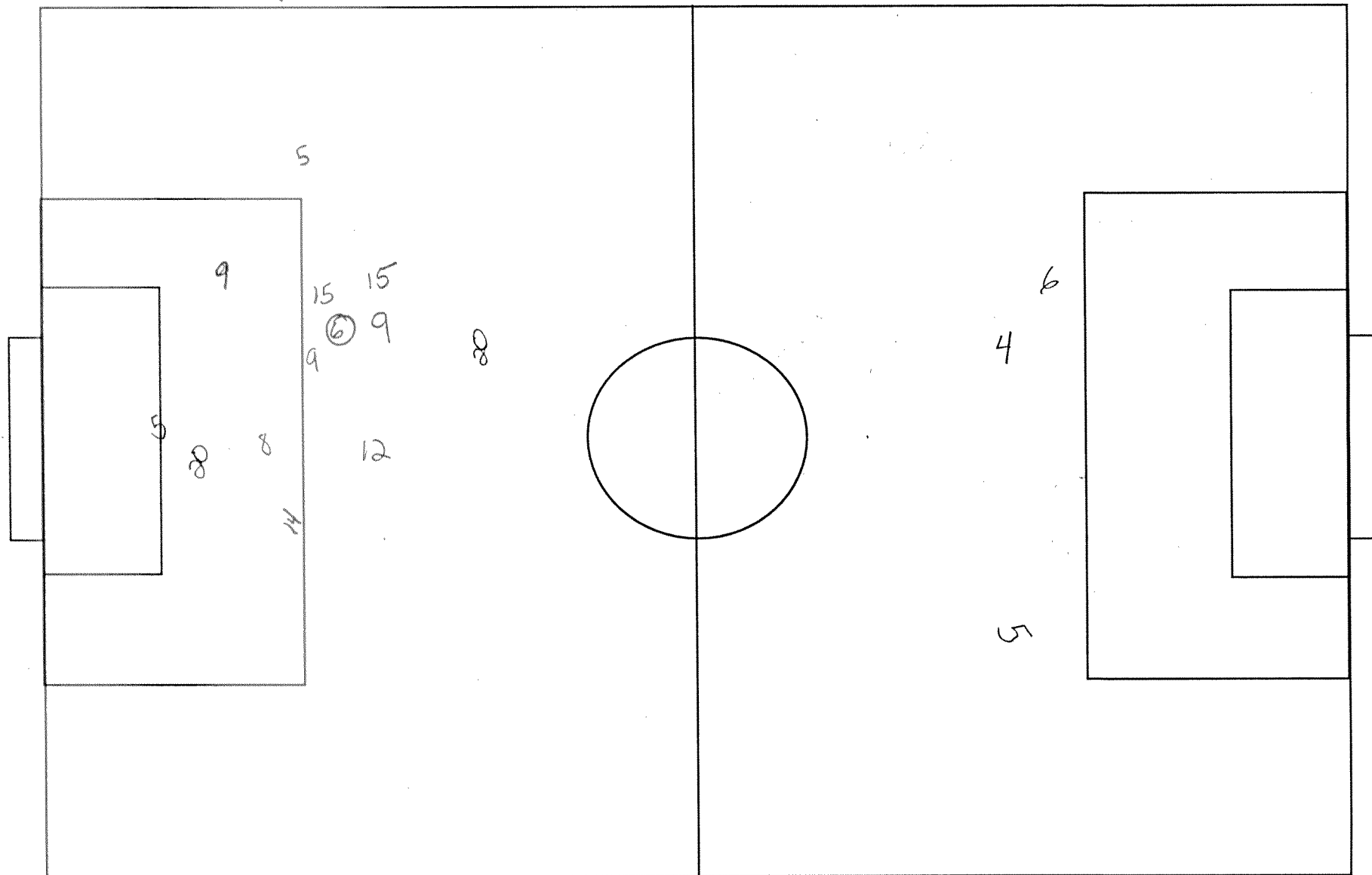
FOULS 11

1	2	3	4	5	6	7	8	9	10
11	12	13	14	15	16	17	18	19	20
21	22	23	24	25	26	27	28	29	30

FLORIDA STATE vs. Duke • Sept. 24, 1995 • Tallahassee, Fla.

HALF: 1st HALF
FLA. ST.

DUKE



FLORIDA STATE vs. Duke • Sept. 24, 1995 • Tallahassee, Fla.

HALF: 2nd HALF

