



# FLORIDA STATE UNIVERSITY

## S P O R T S I N F O R M A T I O N

P.O. BOX 2195 TALLAHASSEE, FL 32316  
(904) 644-1403 FAX: 644-3820

FOR IMMEDIATE RELEASE

### FLORIDA STATE SOCCER LOSES HOME FINALE

September 25, 1995

TALLAHASSEE, Fla. -- The Florida State women's soccer team fell 1-2 to Georgia Southern in its last home soccer match of their inaugural season this afternoon in front of 441 fans at the FSU intramural fields. FSU falls to 3-4-1 on the season while Georgia Southern improves to 4-5 overall.

Florida State had back-to-back matches as the squad fell 0-2 to No. 10-ranked Duke yesterday, in probably its best 90-minute outing of the season.

"Honestly, I'm pretty disappointed with today's loss, because I know we are a much better team than we showed today," FSU coach Heather Kerby said. "I think we got so up for the Duke game (played yesterday) that we didn't have enough time to turn it around for today. We came out flat and really never got into the flow today. We didn't have the same intensity and excitement as we did against Duke."

Offensively, Florida State outshot Georgia Southern, 23-14 and recorded two more cornerkicks (5 to 2) than the Eagles. Goalkeeper Melissa Juhl has 10 saves on the afternoon. Georgia Southern's Debbie Hensley scored both goals for the Eagles with a eight-yard shot at the 10-minute mark and a 21-yarder at the center of the goal in the second half at 52:00. Rachel Tolliver assisted Hensley's first goal. FSU's Janine Lavoie put the Noles on the board in the match's final minute with a header off of a cornerkick by Jacki Stradtman. It is Lavoie's second goal of the season.

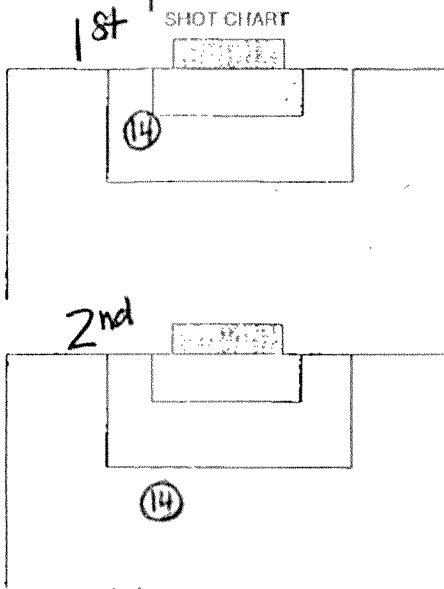
Florida State concluded its home season with a 2-3 record, with wins over West Florida (5-1) and Jacksonville (11-0). The squad will have to regroup quickly as the Seminoles head to Clemson, S.C., for a 7 p.m. match with the Lady Tigers on Friday, Sept. 29. FSU will face Marquette, in Clemson, at 5 p.m., on Saturday.

"The team needs a day off to get their wits about them," Kerby said. "We need to have some solid work sessions this week. Defensively, I think we are playing well, but offensively, we need to work on maintaining our possession time."

--30--

VISITOR <b>Georgia Southern</b>		HOME <b>vs. Florida State</b>	
DATE <b>9-25-95</b>	OFFICIALS <b>R-Tim Fouts, L-Charles Kummer</b> <b>L-Henry Schmid A-marc Taps</b>		
WEATHER <b>Cloudy, humid 80°</b>		ATTENDANCE <b>441</b>	

VISITOR	1	2	OT	OT	F
<b>Georgia Southern</b>	<b>1</b>	<b>1</b>			<b>2</b>
HOME					
<b>Florida State</b>	<b>0</b>	<b>1</b>			<b>1</b>



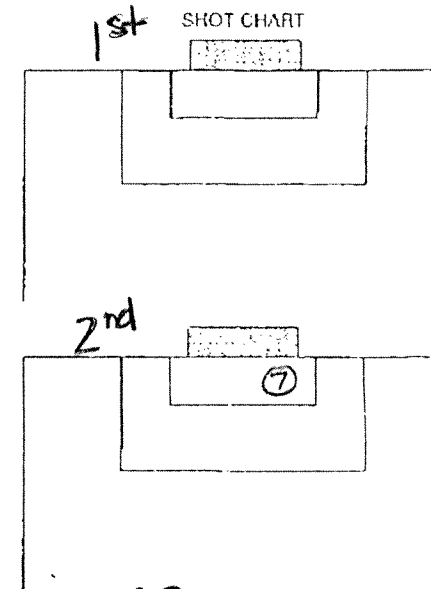
SHOTS	14
CORNER KICKS	3
GOALIE SAVES	8
FOULS	12

VISITOR	SHOTS	GOALS	ASSIS.	NO.	NAME	POS.	HOME	NO.	SHOTS	GOALS	ASSIS.
				GK	1	Amanda Sandling			3		
					2	Morgan Cox			5	1	
					4	Sandy Bonfim			6	1	
					5	Shannon Todd			7		1
					7	Rachel Tolliver			8	1	
					9	Megan Pinkston			10	1	
					10	Lindsey Grossman			13		
					11	Allison Tetraut			14		
					12	Ally Hood			16		
					14	Debbie Hensley			22		
					21	Carol Furness			21	1	

SUBSTITUTIONS											
				6	Jodi Berto					2	1
				18	Vanessa Vickrey					18	
				21	Carol Furness					11	1
				8	Amber Wilson					1	
				17	Kelly Burrell					12	
				15	Lisa Lamb					4	
				16	Nisty Vanlandingham						

GOAL BY:	TEAM	TIME	ASSIST(S)	DESCRIPTION
Debbie Hensley	GA So	10:00	Rachel Tolliver	Pass to #14 shot 8 yds out
#14 Debbie Hensley	GA So	52:00	—	21 yd shot @ center of goal
Janine Lavoie	FSU	89:00	Jacki Stradtman	Header off corner kick

CAUTIONS & EJECTIONS:	
-----------------------	--



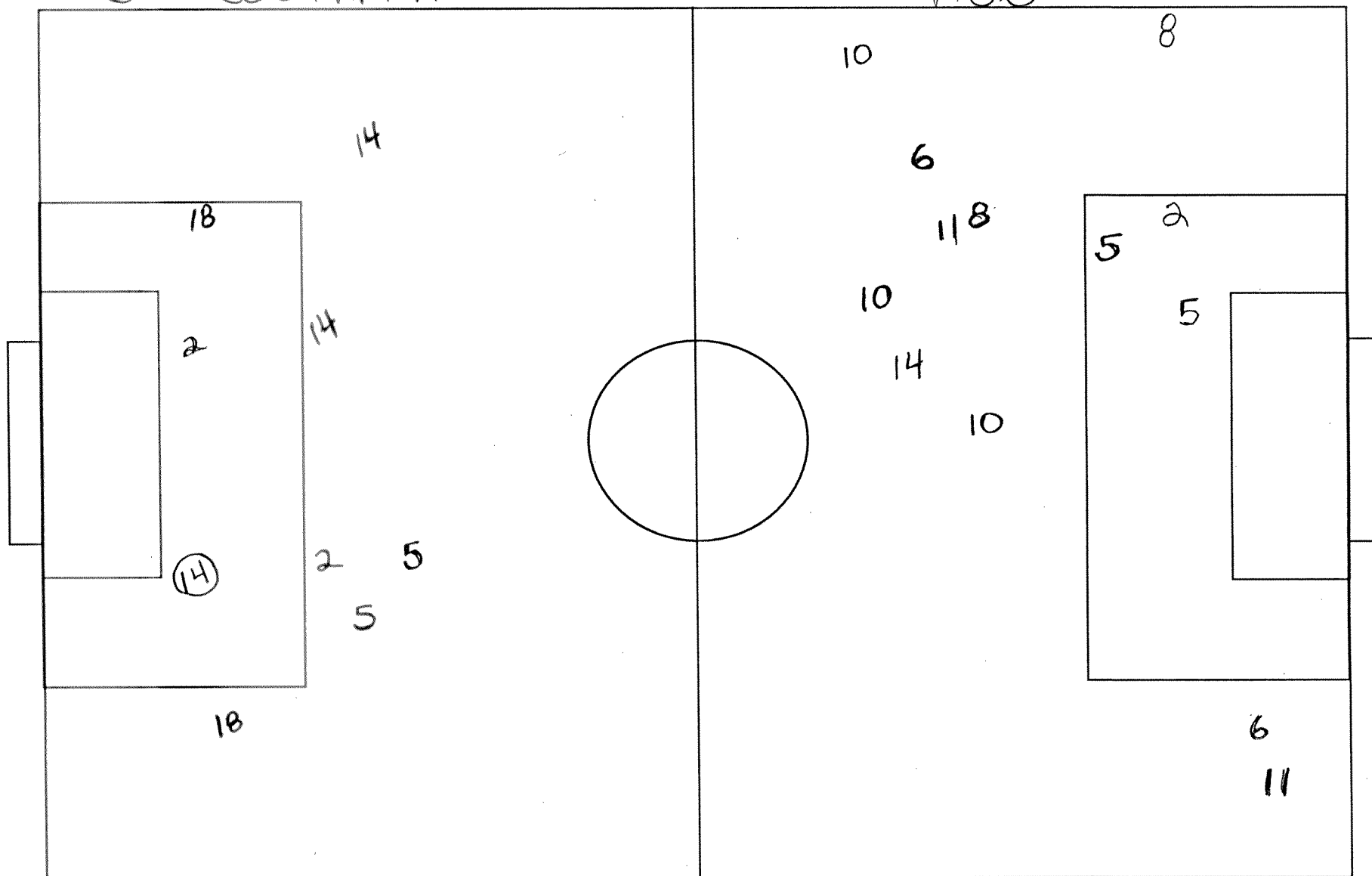
SHOTS	23
CORNER KICKS	5
GOALIE SAVES	10
FOULS	14

FLORIDA STATE vs. Georgia Southern • Sept. 25, 1995 • Tallahassee, Fla.

HALF: 1st

GA SOUTHERN

F.S.U.



FLORIDA STATE vs. Georgia Southern • Sept. 25, 1995 • Tallahassee, Fla. HALF: 2<sup>nd</sup>

