



FLORIDA STATE UNIVERSITY

SPORTS INFORMATION



NCAA WOMEN'S SOCCER
FLORIDA STATE UNIVERSITY
OCTOBER 27, 1996

FOR IMMEDIATE RELEASE

TALLAHASSEE, FL -- The Florida State women's soccer team (12-5-1, 2-4 ACC) scored three goals in the second half to come from behind and beat N.C. State (11-6-1, 3-2-1 ACC) 4-2 at the Seminole Intramural Soccer Complex. This was FSU's first come-from-behind win in program history, let alone coming from behind twice to win.

Outshooting the Wolfpack 12-9, the 'Pack first scored on midfielder Lisa Boggs unassisted loose ball put in the 25th minute. It was the first time since the North Carolina game on September 26th that an opponent has scored on FSU in the first half.

The Lady Seminoles came back when N.C. State's forward Jody Moylin put in an own goal in the 34th minute to even the score going into the half.

The Wolfpack surged back when midfielder Megan Jeidy sent an unassisted header over FSU goalkeeper Melissa Juhl to pull ahead 2-1 in the 58th minute. Juhl had three saves in the effort to the 'Pack's Katherine Mertz' two saves.

FSU tied up the score at two apiece when forward Angela Bonaffino sent a rocket of a free kick over a stretched out Wolfpack goalkeeper into the top right corner of the net.

Midfielder Kelley Poole then put the 'Noles ahead for good on her team leading sixth game winner of the season when she headed in a Bonaffino corner kick from in front of the goal in the 85th minute.

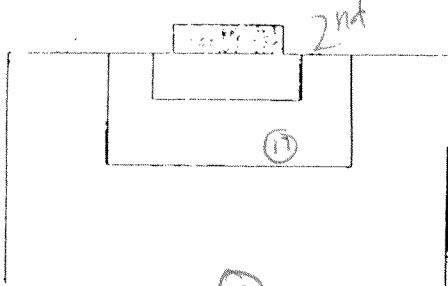
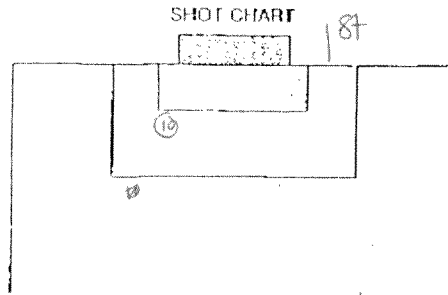
Midfielder Jennifer Yocca put the icing on the cake with her header from forward Alex Osorio in the 88th minute.

Florida State ends the regular season next Sunday, November 3rd against ACC-rival Wake Forest at the SISC.

--30--

VISITOR N.C. State		HOME Florida State	
DATE 10/27/96	OFFICIALS Walt Cordell Art Brown Kevin Hines		
WEATHER sunny and warm		ATTENDANCE 263	

VISITOR NC State	1	1			2
HOME FSU	1	3			4

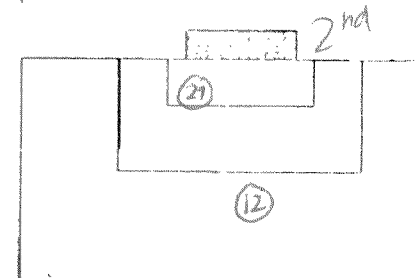
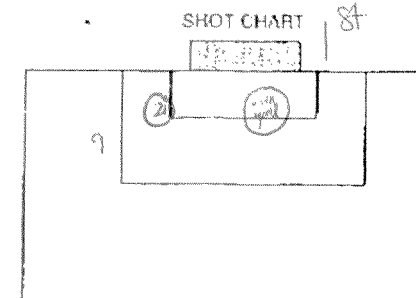


VISITOR				HOME			
SHOTS	GOALS	ASSTS.	NO.	NAME	POS.	NAME	NO.
			61	Katherine Mertz	GK	Melissa Luhl	13
			2	Leanne Sullivan	D	Justina Torres	1
			19	Bridget Durkan	D	Molly Nye	3
			4	Jennifer Marsh	F	Nicole Sedawick	4
			3	Monica Hall	F	Alexandra Osorio	5
			6	Shannon Blair	MF	Janine Lavie	7
			7	Laura Ferguson	MF	Kasey McCall	8
			9	Jane Walton	F	Janna Walkup	10
			11	Kerryn Buenther	MF	Angela Bonaffino	12
			17	Megan Jidy	MF	Jennifer Yocca	21
			20	Alysa Bamaide	D/F	Kelley Poole	27

SUBSTITUTIONS			
1	1	10	Lisa Boggs
		13	Anne Hammer
		14	Jody Maylor
		21	Monica Halliday
			Erin Grimsley
			Lauren Lynch
			Allison Hogan
			Jessica Driscoll
			Kelly Duffer
			Kelly Huff
			Katie Lynn

GOAL BY	TEAM	TIME	ASST(S)	DESCRIPTION
Lisa Boggs	NCSU	25:00	—	Loose ball put in @ bnd line
Megan Jidy	FSU	34:00	—	own goal by #14 (NCS)
Angela Bonaffino	FSU	58:00	—	Headed in over goalie
Kelley Poole	FSU	74:00	—	Freekick at 26 yds.
Jennifer Yocca	FSU	85:00	Angela Bonaffino	Corner Kick, headed in
		88:00	Alexandra Osorio	Cross at end line, headed in

CAUTIONS & EJECTIONS:



SHOTS

1	2	3	4	5	6	7	8	9	10
11	12	13	14	15	16	17	18	19	20
21	22	23	24	25	26	27	28	29	30
31	32	33	34	35	36	37	38	39	40

CORNER KICKS

1	2	3	4	5	6	7	8	9	10
11	12	13	14	15	16	17	18	19	20

GOALIE SAVES

1	2	3	4	5	6	7	8	9	10
11	12	13	14	15	16	17	18	19	20

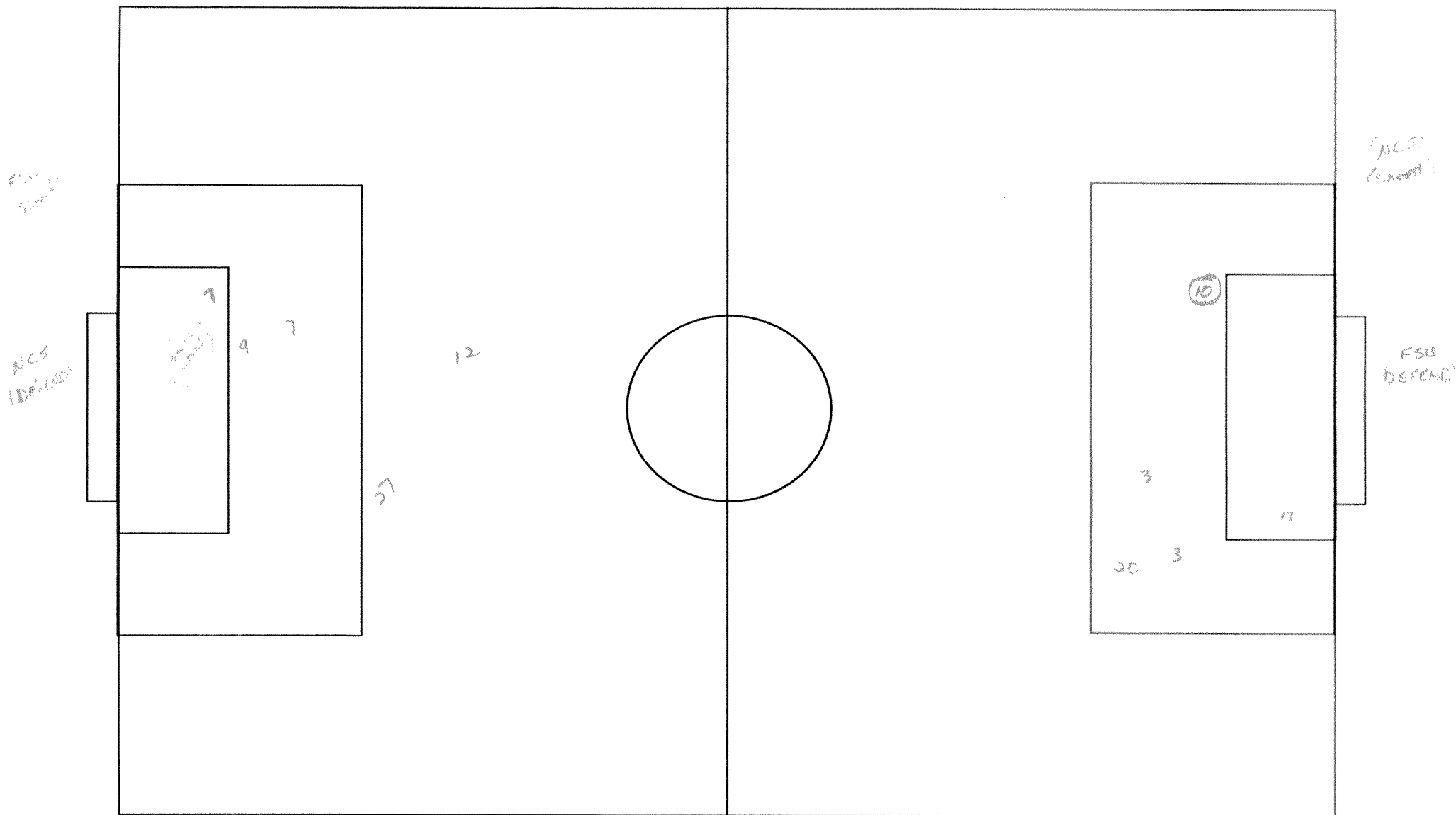
FOULS

1	2	3	4	5	6	7	8	9	10
11	12	13	14	15	16	17	18	19	20
21	22	23	24	25	26	27	28	29	30

*NOTE: Time indicated should be total minutes and seconds into match.

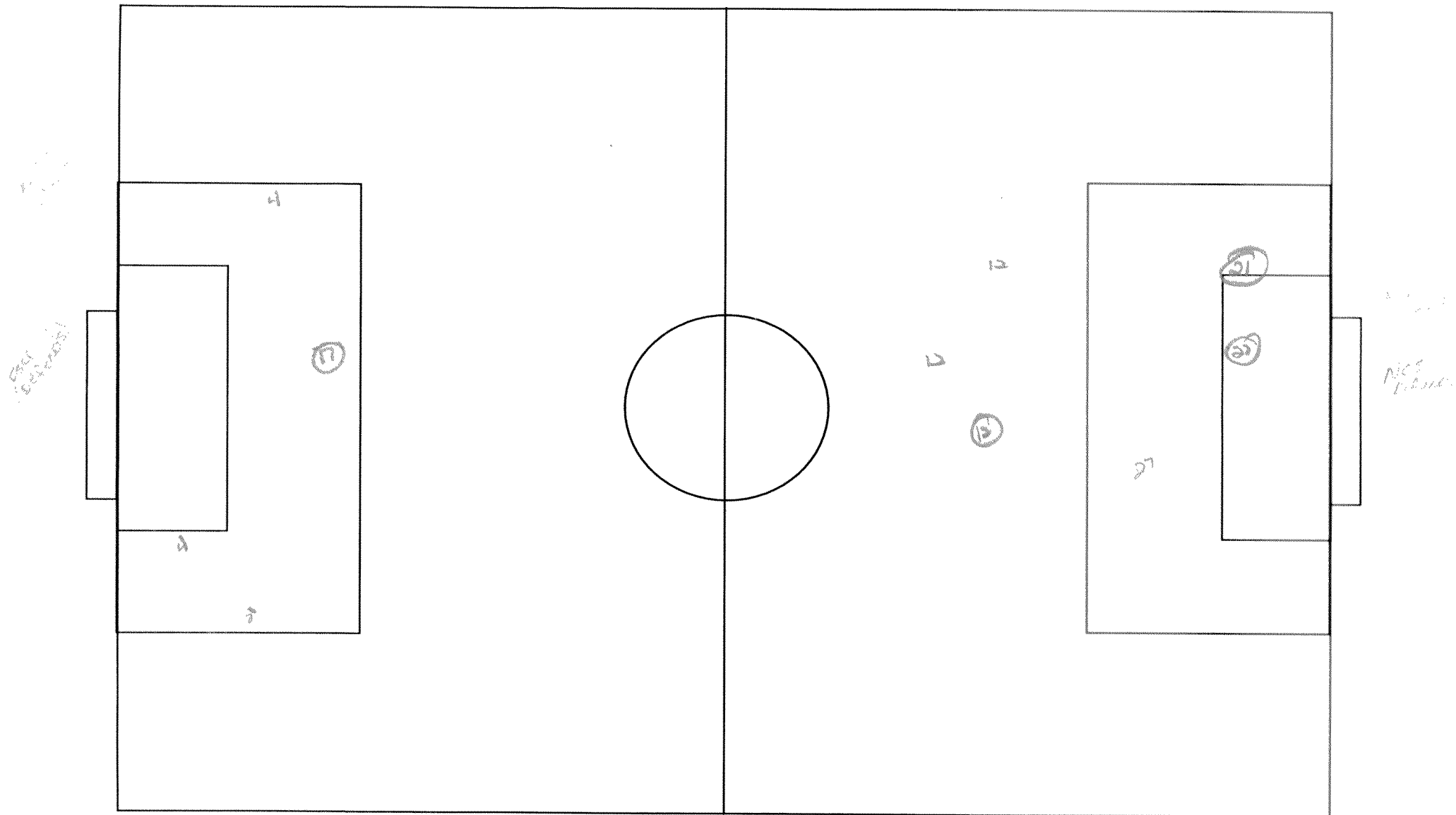
OPPONENT: N.C. STATE

HALF: 1ST



OPPONENT: NC STATE

HALF: 2ND



Field FSU

Signed

Coach