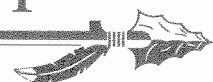




FLORIDA STATE UNIVERSITY

SPORTS INFORMATION



FOR IMMEDIATE RELEASE

SEPTEMBER 5, 1997

FSU DEFEATS WOFFORD 5-1

TALLAHASSEE, FL -- The Florida State women's soccer team (2-1) defeated Wofford (0-2) 5-1 in the Seminoles 1997 home opener Friday evening at the Seminole Soccer Field.

After a Wofford goal by Debbie Boyce at the 16th minute of play, FSU went on to score five unanswered. Boyce took a pass from Brigid Meadow up the middle and scored off Seminole goalkeeper Melissa Juhl from 10 yards out.

FSU's first goal was scored by Erin Grimsley off of a pass from Justina Torres in the 23rd minute. The goal was Grimsley's third of the season and the third straight game that she scored the first goal for FSU.

Janna Walkup scored on a free kick in the 28th minute and Jill Ford took a give and go pass from Alex Osorio in for the score at the 29th minute to close out the first half scoring, with FSU ahead 3-1.

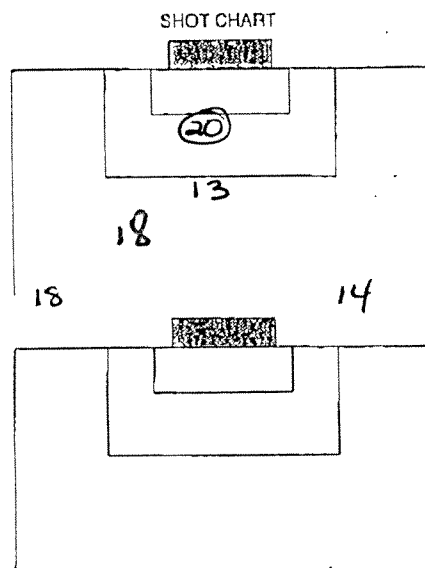
Two freshmen led the way for FSU in the second half as April Murphy and Ashley Halter tabbed their first collegiate goals. Murphy scored on a cross pass from Lauren Lynch in the 51st minute and Halter scored on header off of Janine Lavoie's corner kick in the 75th minute.

--30--

OFFICIAL NCAA® SOCCER BOX SCORE FORM

| | | | |
|---------------------------------|--|---------------------------|--|
| VISITOR Wofford | | HOME vs. Florida State | |
| DATE September 5, 1997 | OFFICIALS Gary Hindley, Head Official Rick Hawthorne, Charles Kummer | | |
| WEATHER Clear, sunny, breezy | | ATTENDANCE 878 | |

| | | | | | |
|---------------|---|---|----|----|---|
| VISITOR | 1 | 0 | OT | OT | F |
| Wofford | 1 | 0 | | | 1 |
| HOME | 3 | 2 | | | 5 |
| Florida State | 3 | 2 | | | 5 |

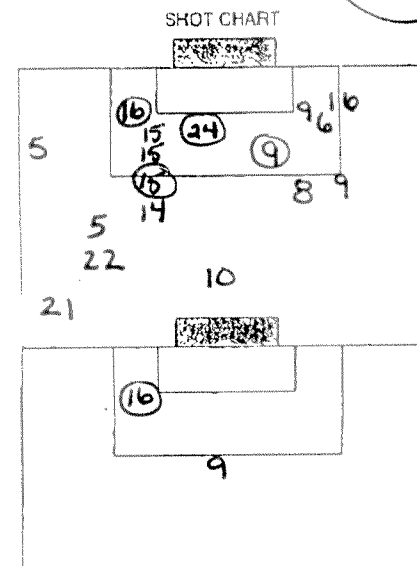


| VISITOR | | | | HOME | | | |
|---------|-------|--------|--------------------|------|------------------|-----|--------------------|
| SHOTS | GOALS | ASSTS. | NO. NAME | POS. | NAME | NO. | SHOTS GOALS ASSTS. |
| | | | 1 Tleana Moschas | GK | Melissa Juhl | 13 | |
| | | | 2 Cathy Green | D | Junie Lavoie | 7 | |
| | | | 3 Amy Jakobe | D | Lauren Lynch | 6 | 1 0 1 |
| 1 | | | 4 Emily Olmstead | D | Rachael Watkin | 20 | |
| | | | 19 Vanessa Blank | D | Danielle Ford | 21 | 1 |
| | | | 6 Amanda Leyland | M | Alexandra Osario | 5 | 3 0 1 |
| | | | 7 Ginger Applegate | M | Justina Torres | 1 | |
| | | | 10 Jenny Petrucci | M | Erin Grimsley | 9 | 4 1 1 |
| 1 | 1 | | 20 Debbie Boyce | M | April Murphy | 16 | 5 1 |
| 1 | | | 14 Heidi Best | F | Janna Walkup | 10 | 1 1 |
| 2 | | 1 | 18 Brigid Meadows | F | Jill Ford | 15 | 4 1 |

| SUBSTITUTIONS | | | | | | | |
|---------------|--|--|--------------------|--|------------------|----|-------|
| | | | 27 Maritza Romero | | Shelley Shelgren | 22 | 1 |
| | | | 13 Christy Clarke | | Molly Nye | 3 | |
| | | | 00 Prentiss Counts | | | | |
| | | | 16 Melissa Murphy | | Jessica Driscoll | 23 | |
| | | | 9 Brenda Wichman | | Ashley Halter | 24 | 1 1 |
| | | | 24 Brooke Huntley | | Leslie Del Rio | 2 | 2 0 0 |
| | | | 11 Nikki Perrin | | Casey McCall | 8 | 1 |

| GOAL BY: | TEAM | TIME* | ASST(S) | DESCRIPTION |
|----------|---------|-------|------------|--------------|
| Boyce | Wofford | 15:41 | Meadows | |
| Grimsley | FSU | 23:00 | Torres | strike right |
| Walkup | FSU | 28:00 | unassisted | Freekick |
| Ford | FSU | 29:00 | Osario | Free Go |
| Murphy | FSU | 51:00 | Lynch | Cross |
| Halter | FSU | 75:00 | Lavoie | corner head |

| CAUTIONS & EJECTIONS: | | | |
|-----------------------|-----------|-----------|------------------|
| Offsides: | FSU 5 | Injuries: | 18 Meadows 55:00 |
| | Wofford 2 | | 1 Moschas 58:00 |



| SHOTS | | | | | | | | | | | | | | | | | | | |
|-------|----|----|----|----|----|----|----|----|----|----|----|----|----|----|----|----|----|----|----|
| 1 | 2 | 3 | 4 | 5 | 6 | 7 | 8 | 9 | 10 | 11 | 12 | 13 | 14 | 15 | 16 | 17 | 18 | 19 | 20 |
| 21 | 22 | 23 | 24 | 25 | 26 | 27 | 28 | 29 | 30 | 31 | 32 | 33 | 34 | 35 | 36 | 37 | 38 | 39 | 40 |

| CORNER KICKS | | | | | | | | | | | | | | | | | | | |
|--------------|----|----|----|----|----|----|----|----|----|----|----|----|----|----|----|----|----|----|----|
| 1 | 2 | 3 | 4 | 5 | 6 | 7 | 8 | 9 | 10 | 11 | 12 | 13 | 14 | 15 | 16 | 17 | 18 | 19 | 20 |
| 21 | 22 | 23 | 24 | 25 | 26 | 27 | 28 | 29 | 30 | 31 | 32 | 33 | 34 | 35 | 36 | 37 | 38 | 39 | 40 |

| GOALIE SAVES | | | | | | | | | | | | | | | | | | | |
|--------------|----|----|----|----|----|----|----|----|----|----|----|----|----|----|----|----|----|----|----|
| 1 | 2 | 3 | 4 | 5 | 6 | 7 | 8 | 9 | 10 | 11 | 12 | 13 | 14 | 15 | 16 | 17 | 18 | 19 | 20 |
| 21 | 22 | 23 | 24 | 25 | 26 | 27 | 28 | 29 | 30 | 31 | 32 | 33 | 34 | 35 | 36 | 37 | 38 | 39 | 40 |

| FOULS | | | | | | | | | | | | | | | | | | | |
|-------|----|----|----|----|----|----|----|----|----|----|----|----|----|----|----|----|----|----|----|
| 1 | 2 | 3 | 4 | 5 | 6 | 7 | 8 | 9 | 10 | 11 | 12 | 13 | 14 | 15 | 16 | 17 | 18 | 19 | 20 |
| 21 | 22 | 23 | 24 | 25 | 26 | 27 | 28 | 29 | 30 | 31 | 32 | 33 | 34 | 35 | 36 | 37 | 38 | 39 | 40 |

SEP 05 '97 09:56AM NCAA

9.2.2

| | | | | | |
|---------|--|--|--|--|--|
| VISITOR | | | | | |
| HOME | | | | | |

SHOT CHART

[illegible][illegible]

CAUTIONS & EJECTIONS:

| SHOTS | | | | | | | | | | |
|-------|----|----|----|----|----|----|----|----|----|--|
| 1 | 2 | 3 | 4 | 5 | 6 | 7 | 8 | 9 | 10 | |
| 11 | 12 | 13 | 14 | 15 | 16 | 17 | 18 | 19 | 20 | |
| 21 | 22 | 23 | 24 | 25 | 26 | 27 | 28 | 29 | 30 | |
| 31 | 32 | 33 | 34 | 35 | 36 | 37 | 38 | 39 | 40 | |

| CORNER KICKS | | | | | | | | | | |
|--------------|----|----|----|----|----|----|----|----|----|--|
| 1 | 2 | 3 | 4 | 5 | 6 | 7 | 8 | 9 | 10 | |
| 11 | 12 | 13 | 14 | 15 | 16 | 17 | 18 | 19 | 20 | |

| GOALIE SAVES | | | | | | | | | | |
|--------------|----|----|----|----|----|----|----|----|----|--|
| 1 | 2 | 3 | 4 | 5 | 6 | 7 | 8 | 9 | 10 | |
| 11 | 12 | 13 | 14 | 15 | 16 | 17 | 18 | 19 | 20 | |

| FOULS | | | | | | | | | | |
|-------|----|----|----|----|----|----|----|----|----|--|
| 1 | 2 | 3 | 4 | 5 | 6 | 7 | 8 | 9 | 10 | |
| 11 | 12 | 13 | 14 | 15 | 16 | 17 | 18 | 19 | 20 | |
| 21 | 22 | 23 | 24 | 25 | 26 | 27 | 28 | 29 | 30 | |

NCAA Soccer Game Roster

Team Florida State University
 Opponent WOFFORD
 Division I
 Date 09/05/97
 Field IREC @ FSU

Note: In accordance with Rule 2-2-a from the 1996 NCAA Men's and Women's Soccer Rules, a completed roster form, including the names of all players, coaches and other bench personnel, must be submitted to the referee, official scorekeeper and opposing coach no later than 15 minutes before game time. The game roster submitted to the official scorekeeper and the opposing coach must include each player's total number of cautions and ejections in the columns beside the players' names; however, the copy submitted to the referee should not include each player's total number of cautions and ejections.

| Jersey No. | PLAYER | Total Cautions | Total Ejections |
|---------------|-----------------------------|----------------|-----------------|
| 01 | Jamie Gurtov | | |
| 1 | Justina Torres | | |
| 2 | Leslie Del Rio | | |
| 3 | Molly Nye | | |
| 4 | Nicole Sedgwick | | |
| 5 | Alexandra Osorio | | |
| 6 | Lauren Lynch | | |
| 7 | Janine Lavoie | | |
| 8 | Kasey McCall | | |
| 9 | Erin Grimsley | | |
| 10 | Janna Walkup | | |
| 11 | Stephanie Dietrich | | |
| 12 | Angela Bonaffino | | |
| 13 | Melissa Juhl | | |
| 14 | Taryn Cervi | | |
| 15 18 | Jill Ford | | |
| 16 | April Murphy | | |
| 17 | Allison Hogan | | |
| 19 | Katie Lunn | | |
| 20 | Rachael Watkin | | |
| 21 | Danielle Foard | | |
| 22 | Sally Shalgren | | |
| 23 | Jessica Driscoll | | |
| 24 | Ashley Halter | | |
| | | | |
| | | | |
| | | | |
| | | | |
| | | | |
| | | | |
| | | | |
| | | | |
| | | | |

| Duties | BENCH PERSONNEL | Total Cautions | Total Ejections |
|-------------|----------------------|----------------|-----------------|
| Head Coach | Heather Kerby-Nelson | | |
| Asst. Coach | Kerry Dziczkaniec | | |
| Asst. Coach | Paul Nelson | | |
| Trainer | Janet Brown | | |
| Manager | Jason Knowles | | |
| Manager | Kelley Poole | | |

Signed Heather Kerby-Nelson
 Coach

NCAA Soccer Game Roster

Team Wofford Women's Soccer Team

Opponent Fsu

Division 1

Date 9/5/97

Field Snyder Field Fsu

Note: In accordance with Rule 2-2-a from the 1996 NCAA Men's and Women's Soccer Rules, a completed roster form, including the names of all players, coaches and other bench personnel, must be submitted to the referee, official scorekeeper and opposing coach no later than 15 minutes before game time. The game roster submitted to the official scorekeeper and the opposing coach must include each player's total number of cautions and ejections in the columns beside the players' names; however, the copy submitted to the referee should not include each player's total number of cautions and ejections.

| Jersey No. | PLAYER | Total Cautions | Total Ejections |
|------------------|-------------------|----------------|-----------------|
| 00 | Prentiss Counts | | |
| ① | Ileana Moschos | | |
| ② | Cathy Green | | |
| ③ | Amy Jakobe | | |
| ④ | Emily Olmstead | | |
| 5 | Linnie Boteler | | |
| ⑥ | Amanda Leyland | | |
| ⑦ | Ginger Applegate | | |
| 9 | Brenda Wichmann | | |
| ⑩ | Jenny Petrilyak | | |
| 11 | Nikki Perrin | | |
| 12 | Lindsey Freeman | | |
| 13 | Christie Clarke | | |
| ⑭ | Heidi Best | | |
| 15 16 | Amber Cagle | | |
| 16 | Melissa Murphy | | |
| ⑮ | Brigid Meadow | | |
| ⑰ | Vanessa Blank | | |
| ⑱ | Debbie Boyce | | |
| 21 | Lauren Goldstein | | |
| 22 | Susie Jakel | | |
| 23 | Laura Wile | | |
| 24 | Brooke Huntley | | |
| 25 27 | Kate Cross | | |
| 26 8 | Jaime Belford | | |
| 27 | Maritza Roncancio | | |
| 30 | Hedda McLendon | | |
| | | | |
| | | | |
| | | | |

| Duties | BENCH PERSONNEL | Total Cautions | Total Ejections |
|--------|------------------------------|----------------|-----------------|
| | Beth Anderson | | |
| | Sarah Corfman | | |
| | Adrienne Winghart | | |
| | Marion Cantrell | | |
| | Heidi | | |

Signed [Signature]
Coach