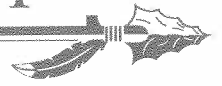




FLORIDA STATE UNIVERSITY

SPORTS INFORMATION



NOVEMBER 2, 1997

FOR IMMEDIATE RELEASE

FSU WOMEN'S SOCCER FALLS IN REGULAR SEASON FINALE

KNOXVILLE, TN -- The Florida State women's soccer team (8-11) gave up three goals in the second half to lose 4-1 to Tennessee (11-8) in the Seminoles' regular season finale at the Tennessee Soccer Complex. Although FSU got on the scoreboard first at 13:31, when Angela Bonaffino knocked in a loose ball past UT keeper Sarah Shively, the Lady Vols rebounded with four goals unanswered.

UT tied up the match at 29:12 when Laura Lauter converted a pass from Kelly Berrall at the top of the box.

FSU was in good shape at the half leading the Lady Vols 7-3 in shots on goal in a 1-1 match. A 15-minute delay at halftime due to inclement weather sparked the UT offense as they came out led the Seminoles with a 14-3 shots on goal advantage in the second half, alone.

UT's Kendyl Michner scored the eventual game-winner off a free kick shot that was taken by teammate Whitney Rayburn. UT would extend the lead just 38 seconds later when Debbie Markovich blasted a penalty kick by FSU reserve keeper Jamie Gurtov. Lauter would later score the game's final goal from the right side from a pass by Michner.

FSU travels next to the ACC Soccer Championships, May 5-9, at Wake Forest in Winston, Salem, NC.

--30--



FLORIDA STATE UNIVERSITY

SPORTS INFORMATION



OCTOBER 31, 1997

FOR IMMEDIATE RELEASE

FLORIDA STATE SHUTS OUT UAB 1-0

KNOXVILLE, TN -- The Florida State women's soccer team (8-10) overcame a slow start in the first half to defeat the University of Alabama-Birmingham 1-0 at the Tennessee Soccer Complex.

Janna Walkup headed in Jill Ford's pass from in front of the goal in the 78th minute for the game-winner. Ford's assist was her first of the season, while Walkup's goal was her fifth and her third game-winner of the season.

FSU had only one shot on goal and one corner kick in the first half, but rebounded with eight shots and eight corner kicks in the second half.

"It was probably the best total team effort in the second half all season," said head coach Heather Kerby-Nelson. "They played solid everywhere, from goal to front."

FSU closes out the regular season with Tennessee on Sunday at 1 p.m. The ACC Tournament is November 5-9 in Winston-Salem, NC.

--30--

<http://ath.utk.edu/womens/>

SPORTS INFORMATION / 117 STOKELY ATHLETICS CENTER / KNOXVILLE, TN 37996-1117 / 423-974-8875 PHONE / 423-974-8875 FAX

November 2, 1997**FOR IMMEDIATE RELEASE****Lady Vol Soccer****Contact: John Hines**

LADY VOLS HANDLE FLORIDA STATE, 4-1
Freshman Laura Lauter Nets a Pair of Goals for UT

The Lady Vol soccer team celebrated Senior Day and a visit by U.S. Olympians Mia Hamm, Kristine Lilly and Tisha Venturini in fine fashion on Sunday, as head coach Charlie MacCabe's club used three second-half goals to defeat Florida State, 4-1. With its second straight victory, Tennessee concludes its season with an 11-8 overall mark, while the Seminoles fall to 8-11.

Florida State's Angela Bonaffino opened the scoring 13:31 into the match when she knocked in a loose ball past UT keeper Sarah Shivley. However, the Lady Vols answered at 29:12 to tie the contest, as freshman Laura Lauter converted a pass from classmate Kelly Berrall for her seventh goal of the campaign.

Following a bizarre halftime that featured heavy rains, thunder and lightning, as well as hail and a 15-minute delay, the Lady Vols kicked its offense into gear. At the break, the Seminole held a 7-3 shot advantage. In the final 45 minutes, the Lady Vols maintained a 14-3 edge.

Sophomore Kendyl Michner broke the deadlock at 55:21 off a direct kick taken by sophomore Whitney Rayburn. For Michner, the tally was her school-record 10th of the season and enabled her to set a new standard for points in a season with 24. In addition, the goal turned out to be her record fifth game-winner.

Tennessee increased its advantage to 3-1 just 38 seconds later when senior Debbie Markovich blasted a penalty kick past FSU keeper Jamie Gurotv. The penalty kick was taken after a Seminole foul inside of the box.

Lauter closed the scoring at 81:46 on a crisp assist from Michner. The two-goal effort was the first of Lauter's Lady Vol career. Shivley made five saves in goal for Tennessee to notch her eighth victory.

SCORING SUMMARY

at the Tennessee Soccer Complex

	<u>1</u>	<u>2</u>	<u>F</u>
Florida State (8-11)	1	0	0
TENNESSEE (11-8)	1	3	4

Scoring: FSU: Angela Bonaffino, 13:31; UT: Laura Lauter (Kelly Berrall), 29:12; UT: Kendyl Michner (Whitney Rayburn), 55:21; UT: Debbie Markovich, 55:59; UT: Laura Lauter (Kendyl Michner), 81:46

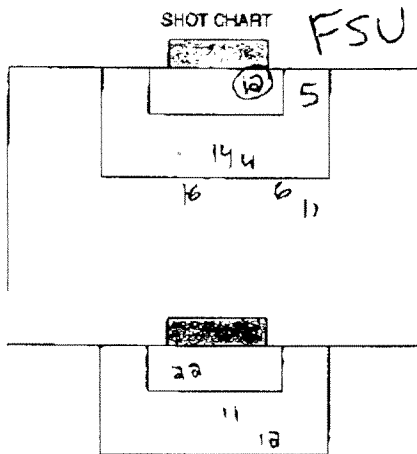
	<u>FSU</u>	<u>UT</u>
Shots:	10	17
Goalie Saves:	6	5
Fouls:	10	8
Corners:	7	9

Attendance: 786**Yellow Cards:** FSU, Janna Walkup, 48:54

OFFICIAL NCAA® SOCCER BOX SCORE

VISITOR Florida State		HOME vs. Tennessee	
DATE 11/2/97	OFFICIALS Roni Canales - Referee Tommy Yasko, T.K. Wright		
WEATHER Windy, Possible Rain, 64°		ATTENDANCE 786	

VISITOR	(8-11)	1	0				1
HOME	(11-8)	1	3				4



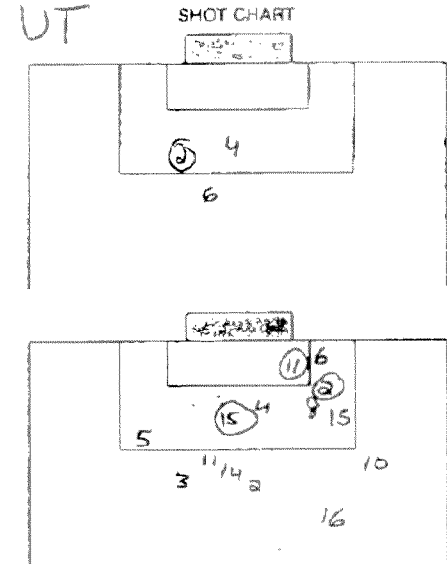
VISITOR				HOME			
SHOTS	GOALS	ASSTS.	NO.	NAME	POS.	NAME	NO.
			13	Melissa Juhl	GK	Sarah Shively	00
			4	Nicole Sedgwick		Natalie Balosh	3
			5	Alex Osorio		Lisa Tipton	20
			10	Janna Walkup		Sharon Kelly	10
			11	Stephanie Dietrich		Kendyl Michner	11
			12	Angela Bonaffino		Heather Handel	12
			15	Jill Ford		Debbie Markovich	15
			16	April Murphy		Holly Kimble	16
			19	Katie Lunn		Jodie Hanlon	17
			20	Rachael Watkin		Kassie Kees	18
			21	Danielle Foard		Bethany Hume	19

VISITOR				HOME			
SHOTS	GOALS	ASSTS.	NO.	NAME	POS.	NAME	NO.
			24	Ashley Hatter		Laura Lauter	2
			6	Lauren Lynch		Kelly Berrall	9
			22	Sally Sheigren		Shayna Teutsch	4
			14	Taryn Cervi		Melissa Covington	6
			1	Justina Torres		Anna Dempsey	14
			7	Janine Lavoie		Heather Redecker	13
			23	Jessica Driscoll		Tori Beeler	22

GOAL BY:	TEAM	TIME*	DESCRIPTION
#12 Bonaffino	FSU	13:31	knocked in loose ball
#2 Lauter	UT	29:12	loose ball top of box
#11 Michner	UT	55:21	shot off Free Kick
#15 Markovich	UT	55:59	penalty kick
#2 Lauter	UT	81:46	blast from right side

CAUTIONS & EJECTIONS: Yellow Card: FSU #10 Walkup, 48:54

*Note: Time indicated should be total minutes and seconds into match.



SHOTS	GOALS	ASSTS.	NO.	NAME	POS.	NAME	NO.
			2	Ashley Hatter		Laura Lauter	2
			6	Lauren Lynch		Kelly Berrall	9
			22	Sally Sheigren		Shayna Teutsch	4
			14	Taryn Cervi		Melissa Covington	6
			1	Justina Torres		Anna Dempsey	14
			7	Janine Lavoie		Heather Redecker	13
			23	Jessica Driscoll		Tori Beeler	22

CORNER KICKS	GOALS	ASSTS.	NO.	NAME	POS.	NAME	NO.
			2	Ashley Hatter		Laura Lauter	2
			6	Lauren Lynch		Kelly Berrall	9
			22	Sally Sheigren		Shayna Teutsch	4
			14	Taryn Cervi		Melissa Covington	6
			1	Justina Torres		Anna Dempsey	14
			7	Janine Lavoie		Heather Redecker	13
			23	Jessica Driscoll		Tori Beeler	22

GOALIE SAVES	GOALS	ASSTS.	NO.	NAME	POS.	NAME	NO.
			2	Ashley Hatter		Laura Lauter	2
			6	Lauren Lynch		Kelly Berrall	9
			22	Sally Sheigren		Shayna Teutsch	4
			14	Taryn Cervi		Melissa Covington	6
			1	Justina Torres		Anna Dempsey	14
			7	Janine Lavoie		Heather Redecker	13
			23	Jessica Driscoll		Tori Beeler	22

FOULS	GOALS	ASSTS.	NO.	NAME	POS.	NAME	NO.
			2	Ashley Hatter		Laura Lauter	2
			6	Lauren Lynch		Kelly Berrall	9
			22	Sally Sheigren		Shayna Teutsch	4
			14	Taryn Cervi		Melissa Covington	6
			1	Justina Torres		Anna Dempsey	14
			7	Janine Lavoie		Heather Redecker	13
			23	Jessica Driscoll		Tori Beeler	22

Offsides: / /

Offsides: / /
NCAA 11831-6/97